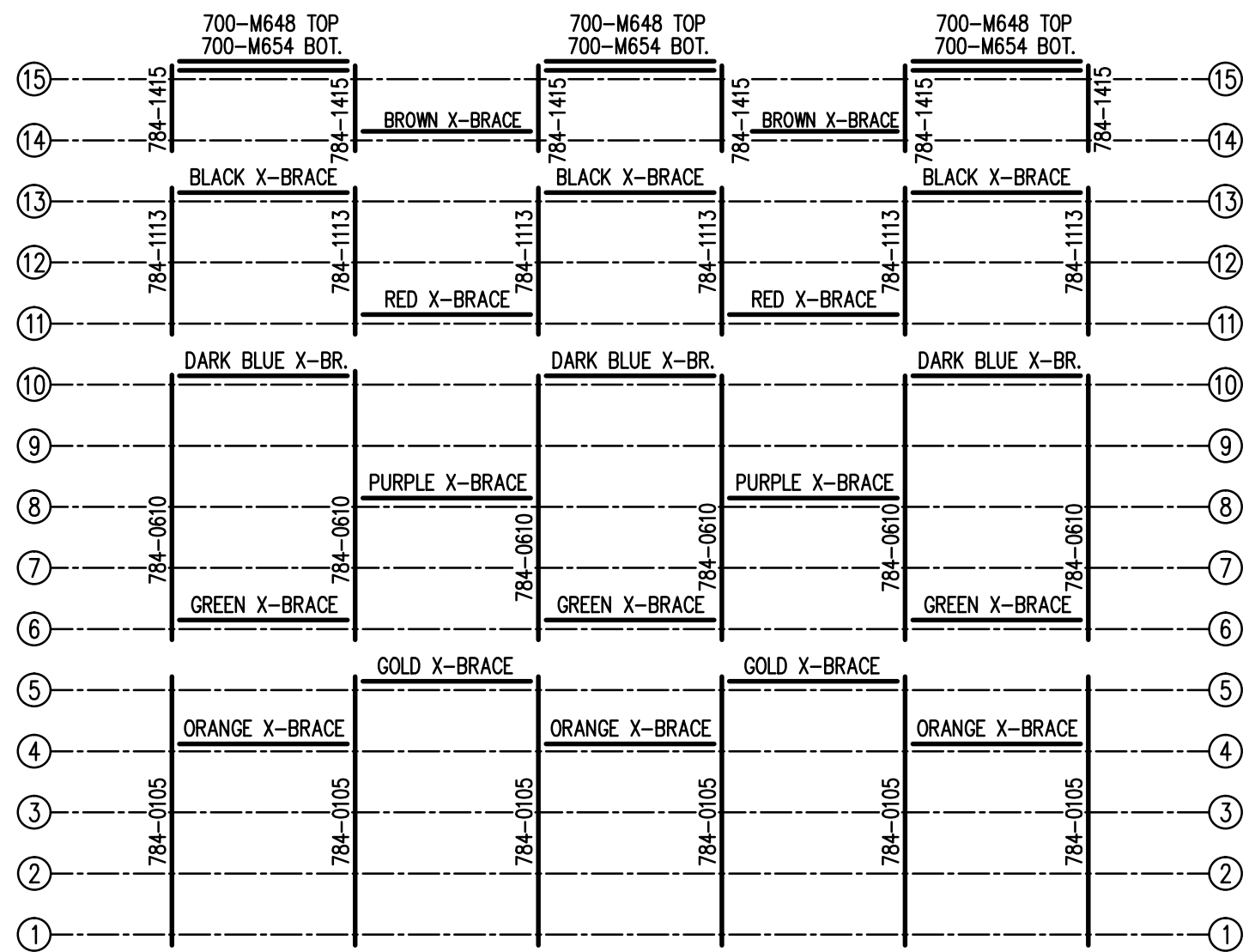


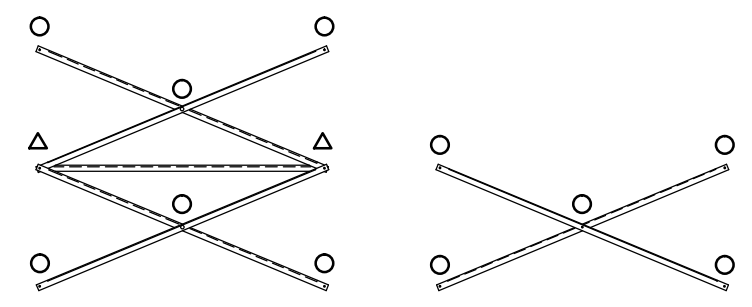
SEATING PLAN
 3/16" = 1'-0"
 274 NET SEATS @ 18" PER SEAT

| | | | |
|------------------------------|-----|---|---------------|
| | | P.O. BOX 118 GENEVA, ALABAMA 36340 334-684-2296 | |
| | | SCALE 3/16"=1'-0" | REVISIONS |
| DATE 11/2/11 | | | |
| DR'N GPK | CKD | | |
| AP'VD | | | |
| TITLE DLW 15-33 SEATING PLAN | | | NO. 784-E2288 |



FRAMING PLAN

3/16" = 1'-0"

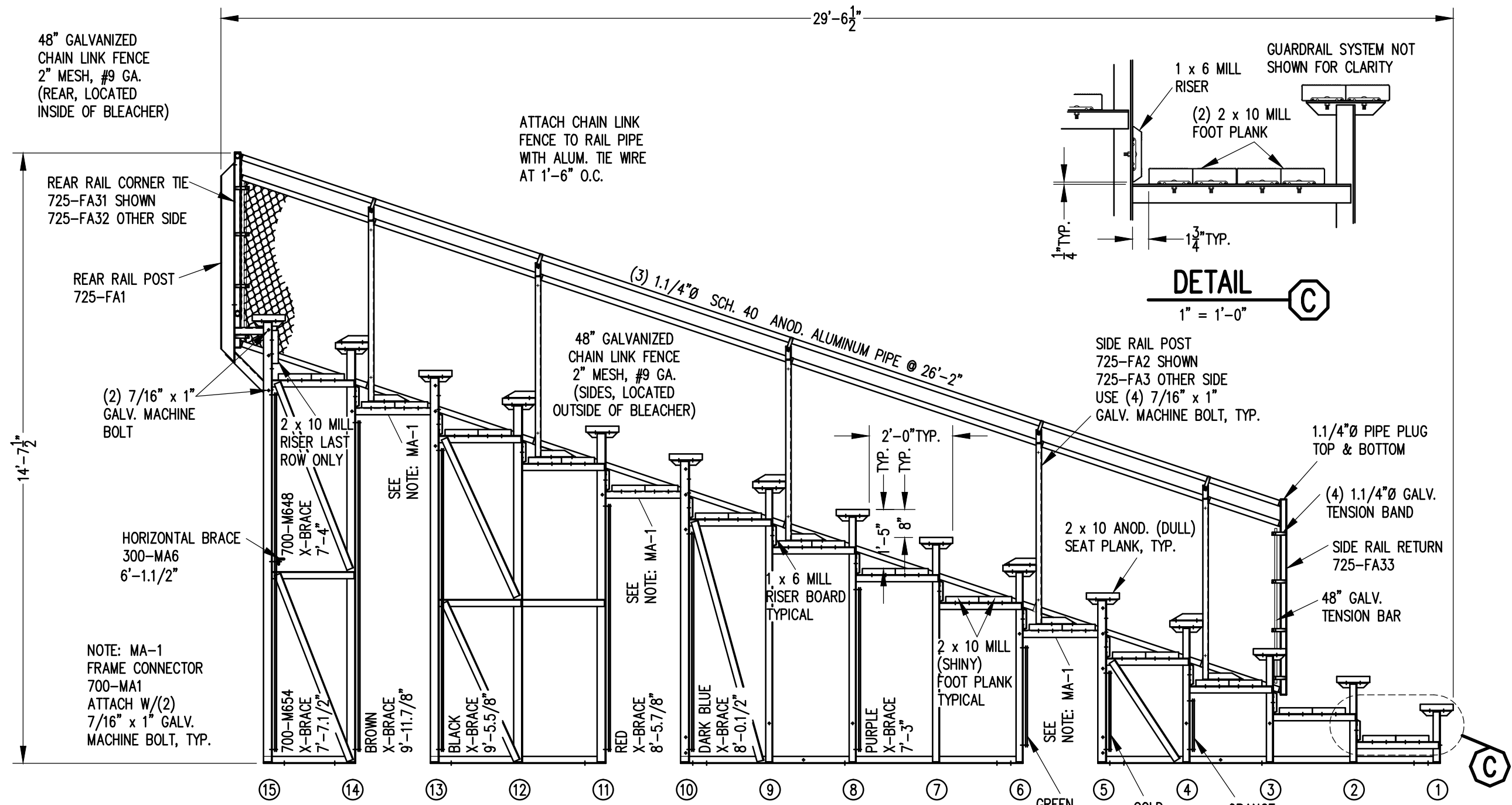


X-BRACE DETAIL

N.T.S.

- 7/16" X 1" GALV. MACH. BOLT
- △ 7/16" X 1.1/2" GALV. MACH. BOLT

| | | | |
|------------------------|--|--|------------------|
| | | Outdoor Aluminum P.O. BOX 118 GENEVA, ALABAMA 36340 334-684-2296 | |
| | | | |
| DATE 11/2/11 | | | |
| DR'N <i>CDK</i> CKD | | | |
| AP'VD | | | |
| TITLE | | | NO. |
| DLW 15-33 FRAMING PLAN | | | 784-E2289 |



SECTION AA
3/8" = 1'-0"

DETAIL C
1" = 1'-0"

48" GALVANIZED CHAIN LINK FENCE 2" MESH, #9 GA. (REAR, LOCATED INSIDE OF BLEACHER)

ATTACH CHAIN LINK FENCE TO RAIL PIPE WITH ALUM. TIE WIRE AT 1'-6" O.C.

GUARDRAIL SYSTEM NOT SHOWN FOR CLARITY

REAR RAIL CORNER TIE 725-FA31 SHOWN 725-FA32 OTHER SIDE

REAR RAIL POST 725-FA1

(2) 7/16" x 1" GALV. MACHINE BOLT

HORIZONTAL BRACE 300-MA6 6'-1.1/2"

NOTE: MA-1 FRAME CONNECTOR 700-MA1 ATTACH W/(2) 7/16" x 1" GALV. MACHINE BOLT, TYP.

(3) 1.1/4"Ø SCH. 40 ANOD. ALUMINUM PIPE @ 26'-2"

48" GALVANIZED CHAIN LINK FENCE 2" MESH, #9 GA. (SIDES, LOCATED OUTSIDE OF BLEACHER)

SIDE RAIL POST 725-FA2 SHOWN 725-FA3 OTHER SIDE USE (4) 7/16" x 1" GALV. MACHINE BOLT, TYP.

1.1/4"Ø PIPE PLUG TOP & BOTTOM

(4) 1.1/4"Ø GALV. TENSION BAND

SIDE RAIL RETURN 725-FA33

48" GALV. TENSION BAR

2 x 10 ANOD. (DULL) SEAT PLANK, TYP.

1 x 6 MILL RISER BOARD TYPICAL

2 x 10 MILL (SHINY) FOOT PLANK TYPICAL

GREEN X-BRACE 6'-6.3/4"

GOLD X-BRACE 6'-4.3/4"

ORANGE X-BRACE 6'-2.7/8"

15

14

13

12

11

10

9

8

7

6

5

4

3

2

1

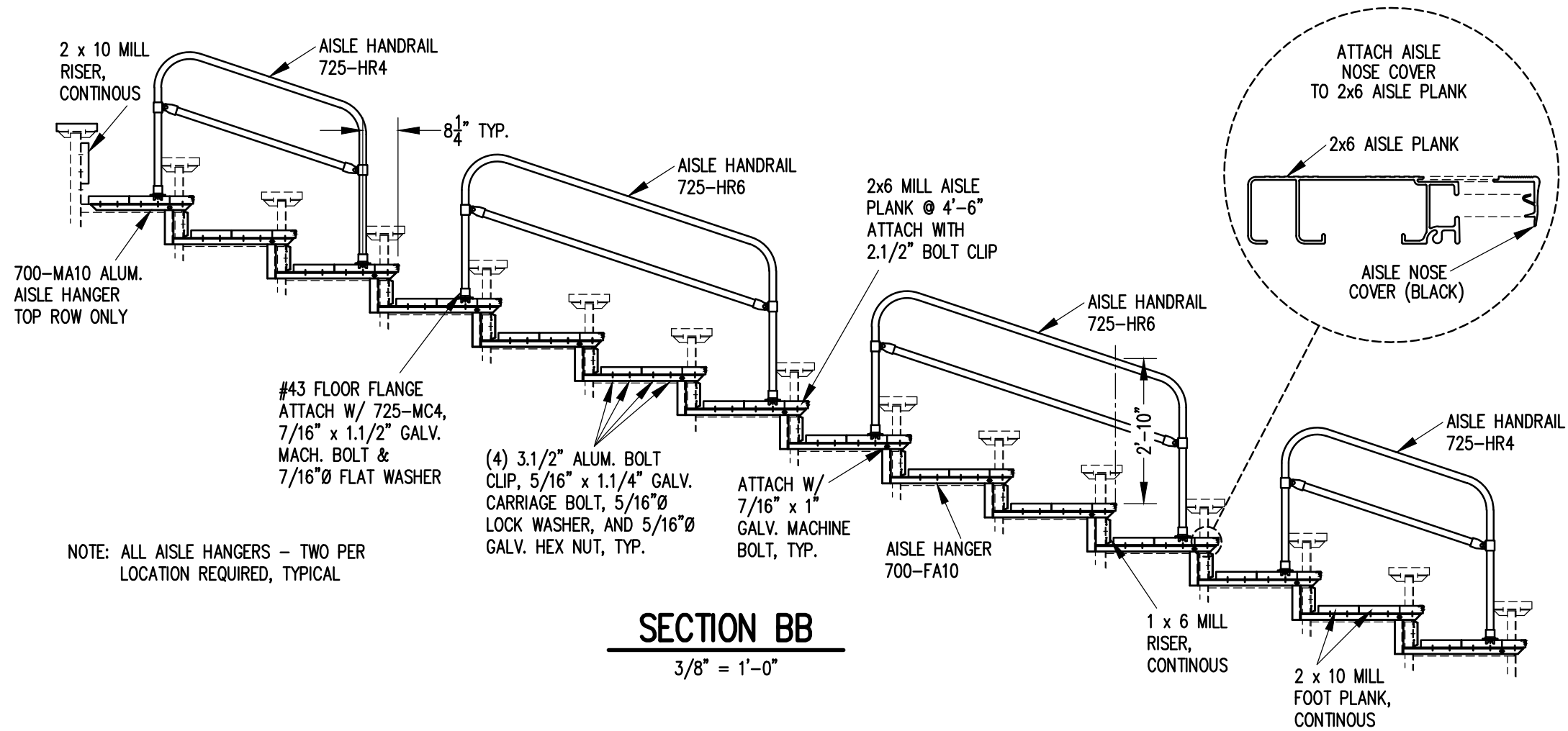
C



Outdoor Aluminum


P.O. BOX 118
GENEVA, ALABAMA 36340
334-684-2296

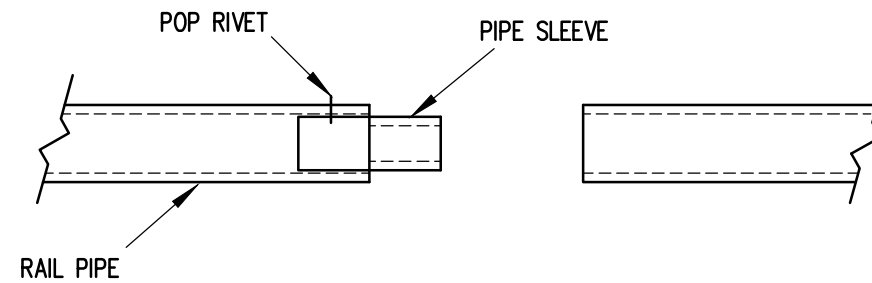
| | | | |
|--------------------|-----------|----|------|
| SCALE 3/8"=1'-0" | REVISIONS | BY | DATE |
| DATE 11/2/11 | | | |
| DR'N CDK CKD | | | |
| AP'VD | | | |
| TITLE | NO. | | |
| DLW 15 ROW SECTION | 784-E2293 | | |



SECTION BB

3/8" = 1'-0"

| | | | |
|---|--|--|------------------|
|  | | Outdoor Aluminum P.O. BOX 118 GENEVA, ALABAMA 36340 334-684-2296 | |
| | | | |
| DATE 11/2/11 | | | |
| DR'N <i>CDK</i> CKD | | | |
| AP'VD | | | |
| TITLE | | | NO. |
| DLW 15 ROW AISLE SECTION | | | 784-E2016 |

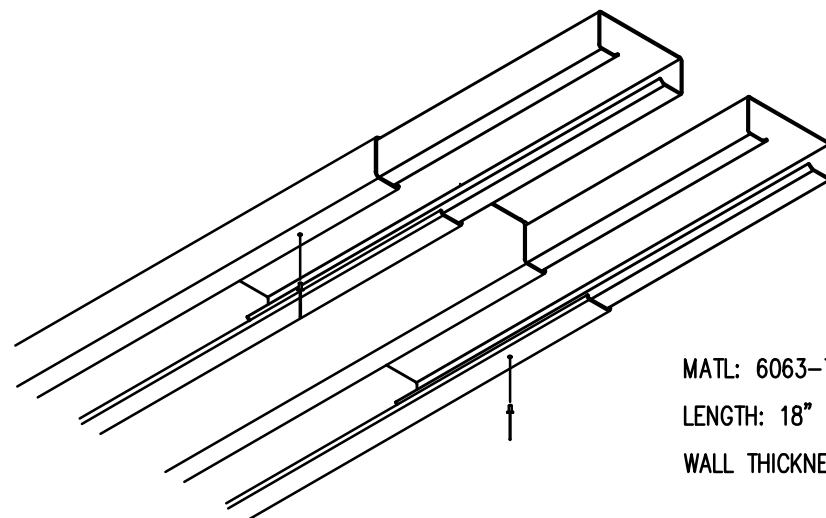


PIPE SLEEVE ASSEMBLY

1.1/2" = 1' 0"

- 1) INSERT PIPE SLEEVE APPROXIMATELY HALFWAY INTO THE RAIL PIPE. FASTEN PIPE SLEEVE WITH (1) ALUMINUM POP RIVET (5/32" X 5/8")
- 2) SLIDE THE END OF THE ADJOINING RAILPIPE OVER THE PIPE SLEEVE UNTIL THE TWO RAILS ARE FLUSH.

NOTE: PIPE SLEEVES SHOULD BE ATTACHED ON ONLY ONE END TO ALLOW FOR EXPANSION.




MATL: 6063-T6 ALUMN.
 LENGTH: 18"
 WALL THICKNESS: .062"

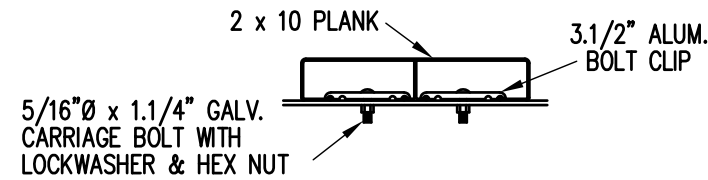
- 1) INSERT SLEEVES APPROXIMATELY HALFWAY INTO THE PLANK WITH THE ENDS STAGGERED ABOUT 1/2". FASTEN SLEEVE WITH (1) ALUMINUM POP RIVET.
- 2) SLIDE THE END OF THE ADJOINING PLANK OVER THE SLEEVES UNTIL THE TWO PLANKS ARE SNUG.

NOTE: SLEEVES SHOULD BE ATTACHED ON ONLY ONE END TO ALLOW FOR EXPANSION.

PLANK SPLICE SLEEVE ASSEMBLY

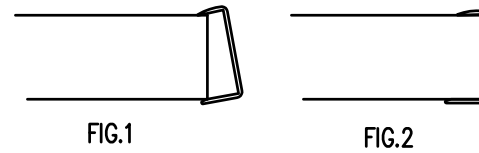
(TYP. @ ALL PLANK SPLICES)

| | | | |
|---|-----|---|-------------------------|
|  | | Outdoor Aluminum <small>P.O. BOX 118 GENEVA, ALABAMA 36340 334-684-2296</small> | |
| | | | |
| DATE 11/2/11 | | | |
| DR'N <i>CDK</i> | CKD | | |
| AP'VD | | | |
| TITLE SPLICE SLEEVE ASSEMBLY | | | NO. 784-E1994 |



BOLT CLIP DETAIL

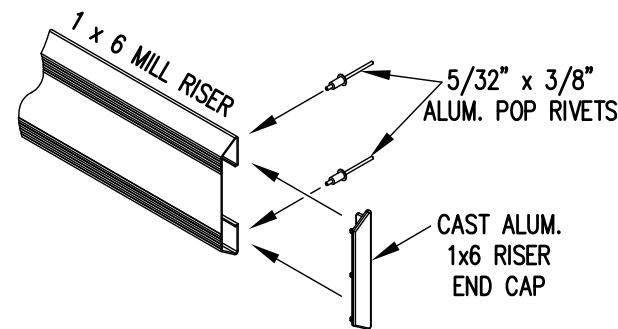
1.1/2" = 1'-0"



- 1) LOCATE THE CHANNEL END CAP AS SHOWN IN FIG. 1.
- 2) TAP END CAP INTO PLACE WITH RUBBER Mallet OR SOFT WOOD. FIG.2
- 3) DRILL 5/32" HOLES THROUGH THE BOTTOM FLANGE AND THE BOTTOM OUTSIDE PLANK FLANGES OF EACH PLANK. INSTALL 5/32" POP RIVETS.

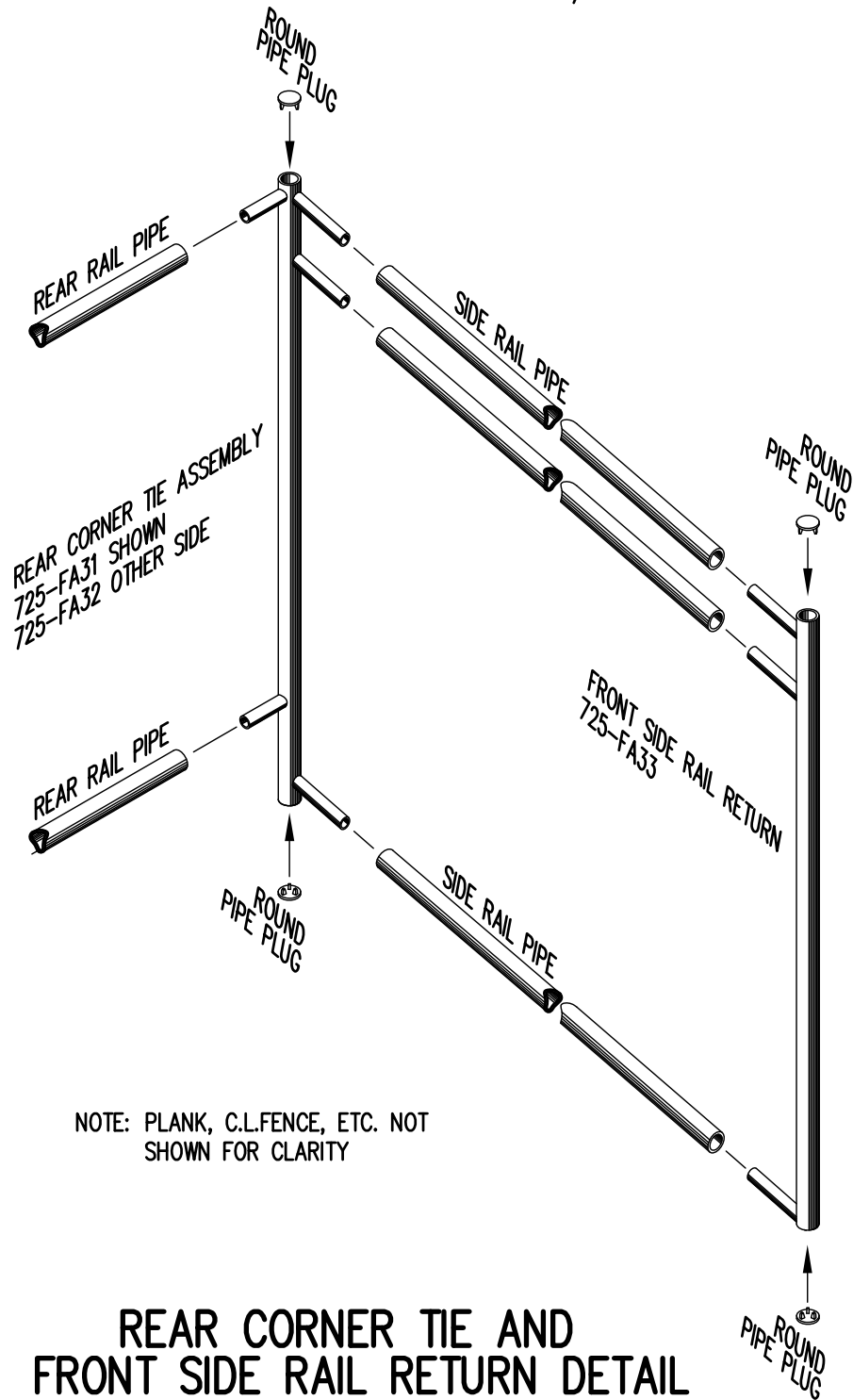
END CAP DETAIL

N.T.S.



1 x 6 RISER END CAP

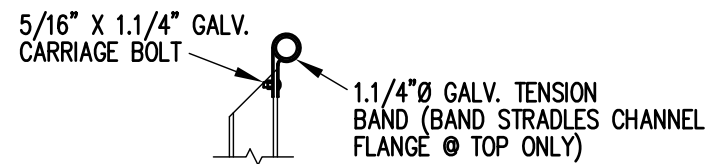
N.T.S.



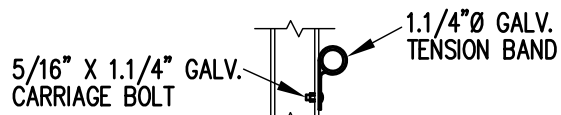
REAR CORNER TIE AND FRONT SIDE RAIL RETURN DETAIL

3/4" = 1'-0"

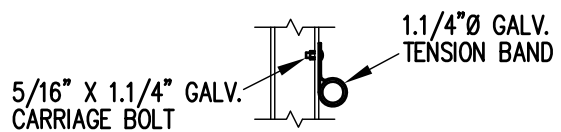
NOTE: PLANK, C.L.FENCE, ETC. NOT SHOWN FOR CLARITY



TOP RAIL

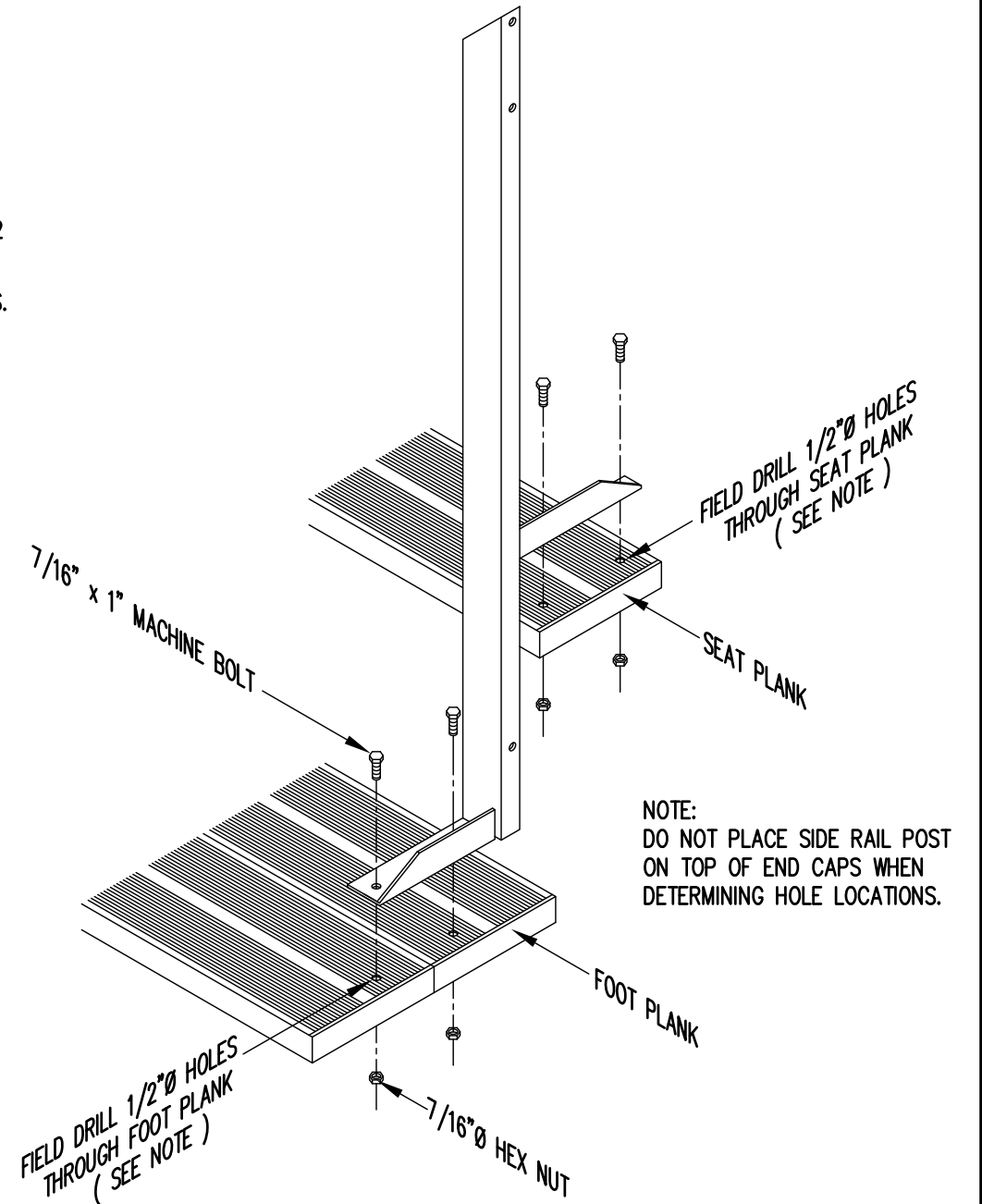


2ND RAIL



BOTTOM RAIL

RAIL PIPE ATTACHMENT



TYP. SIDE RAIL POST ATTACHMENT

1" = 1'-0"

NOTE: DO NOT PLACE SIDE RAIL POST ON TOP OF END CAPS WHEN DETERMINING HOLE LOCATIONS.

| | | | | | |
|-----------------|---------|---|----------|-----------|----|
| | | P.O. BOX 118 GENEVA, ALABAMA 36340 334-684-2296 | | | |
| | | SCALE | AS NOTED | REVISIONS | BY |
| DATE | 11/2/11 | | | | |
| DR'N | ADK | CKD | | | |
| AP'VD | | | | | |
| TITLE | | | | NO. | |
| TYPICAL DETAILS | | | | 784-E1990 | |