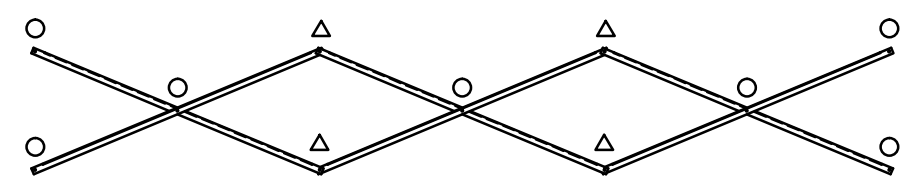
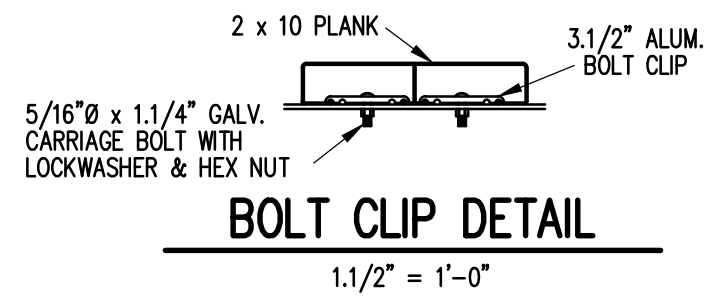


SEAT & FRAMING PLAN
 1/4" = 1'-0"
 42 NET SEATS @ 18" PER SEAT

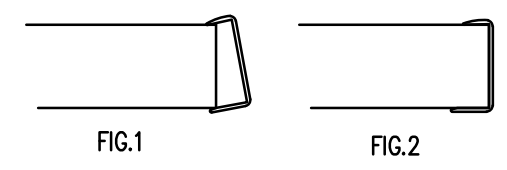


X-BRACE DETAIL
 N.T.S.

- 7/16" X 1" GALV. MACH. BOLT
- △ 7/16" X 1.1/2" GALV. MACH. BOLT

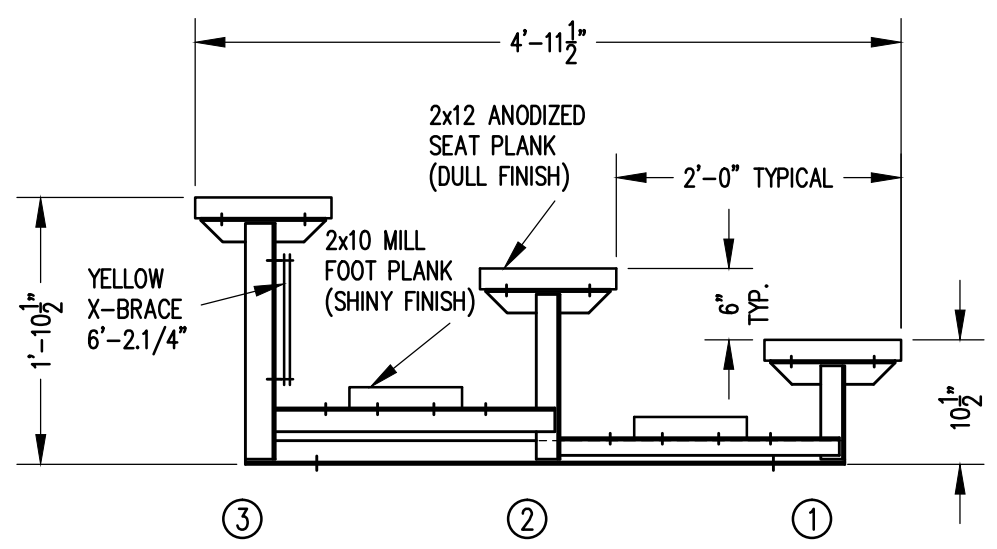


BOLT CLIP DETAIL
 1.1/2" = 1'-0"



- 1) LOCATE THE CHANNEL END CAP AS SHOWN IN FIG. 1.
- 2) TAP END CAP INTO PLACE WITH RUBBER Mallet OR SOFT WOOD. FIG. 2
- 3) DRILL 5/32" HOLES THROUGH THE BOTTOM FLANGE AND THE BOTTOM OUTSIDE PLANK FLANGES OF EACH PLANK. INSTALL 5/32" POP RIVETS.

END CAP DETAIL
 N.T.S.



SECTION AA
 3/4" = 1'-0"

		P.O. BOX 118 GENEVA, ALABAMA 36340 334-684-2296		
		SCALE AS NOTED	REVISIONS	BY
DATE	11/2/11			
DR'N	CDK	CKD		
AP'VD				
TITLE			NO.	
LDLW 3-21 SEATING/FRAMING PLAN			764-E1056	