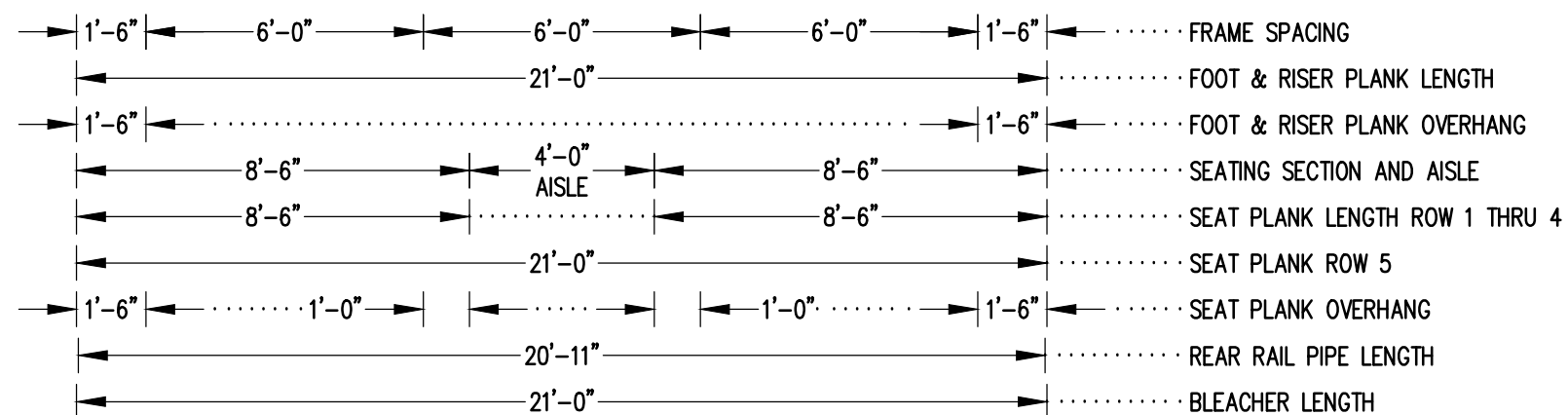


X-BRACE DETAIL

N.T.S.


- 7/16" X 1" GALV. MACH. BOLT
- △ 7/16" X 1.1/2" GALV. MACH. BOLT

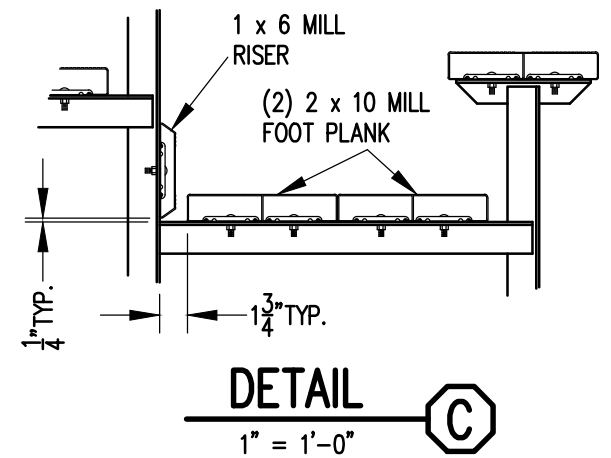
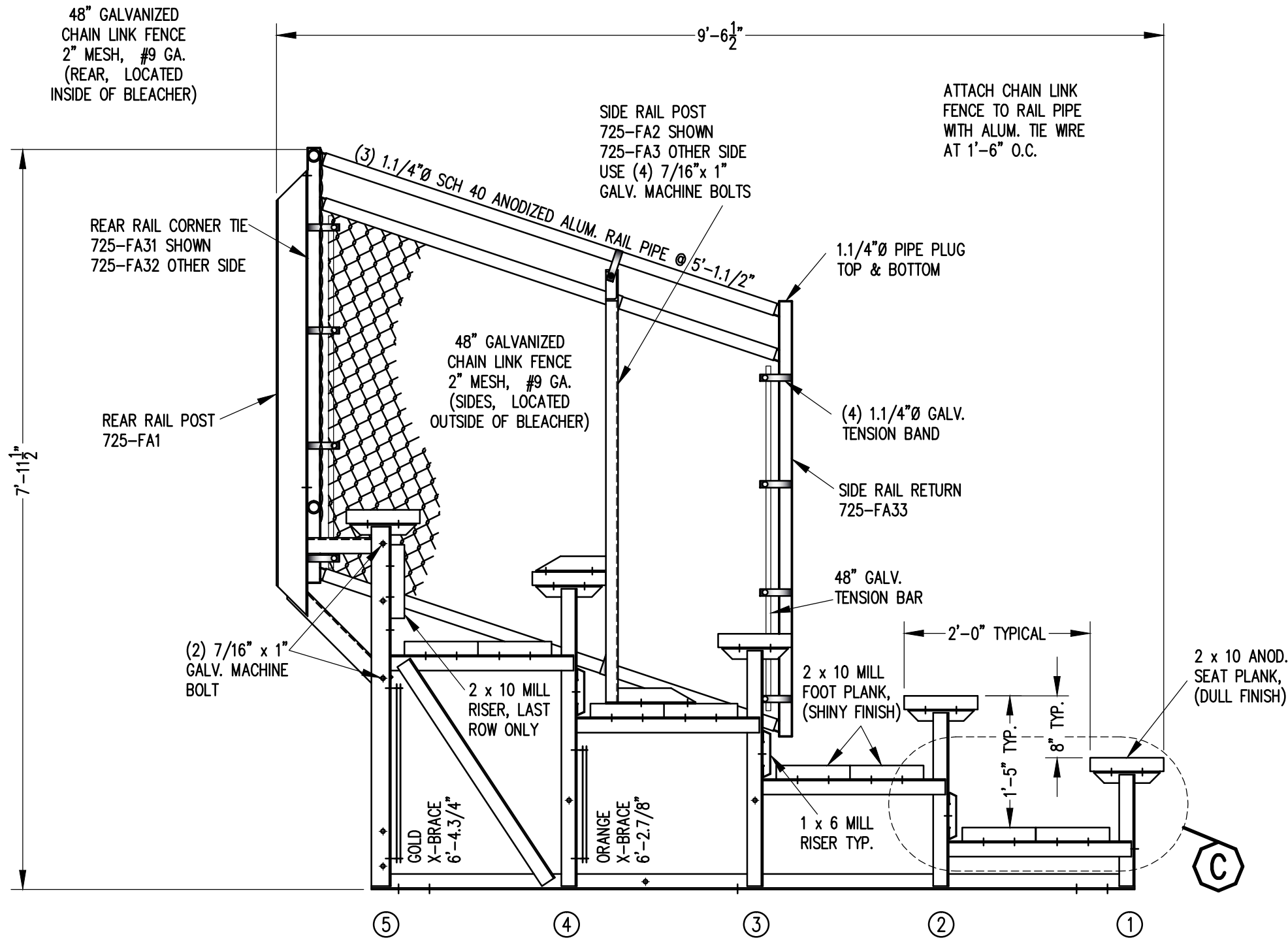


SEATING & FRAMING PLAN


1/4" = 1'-0"

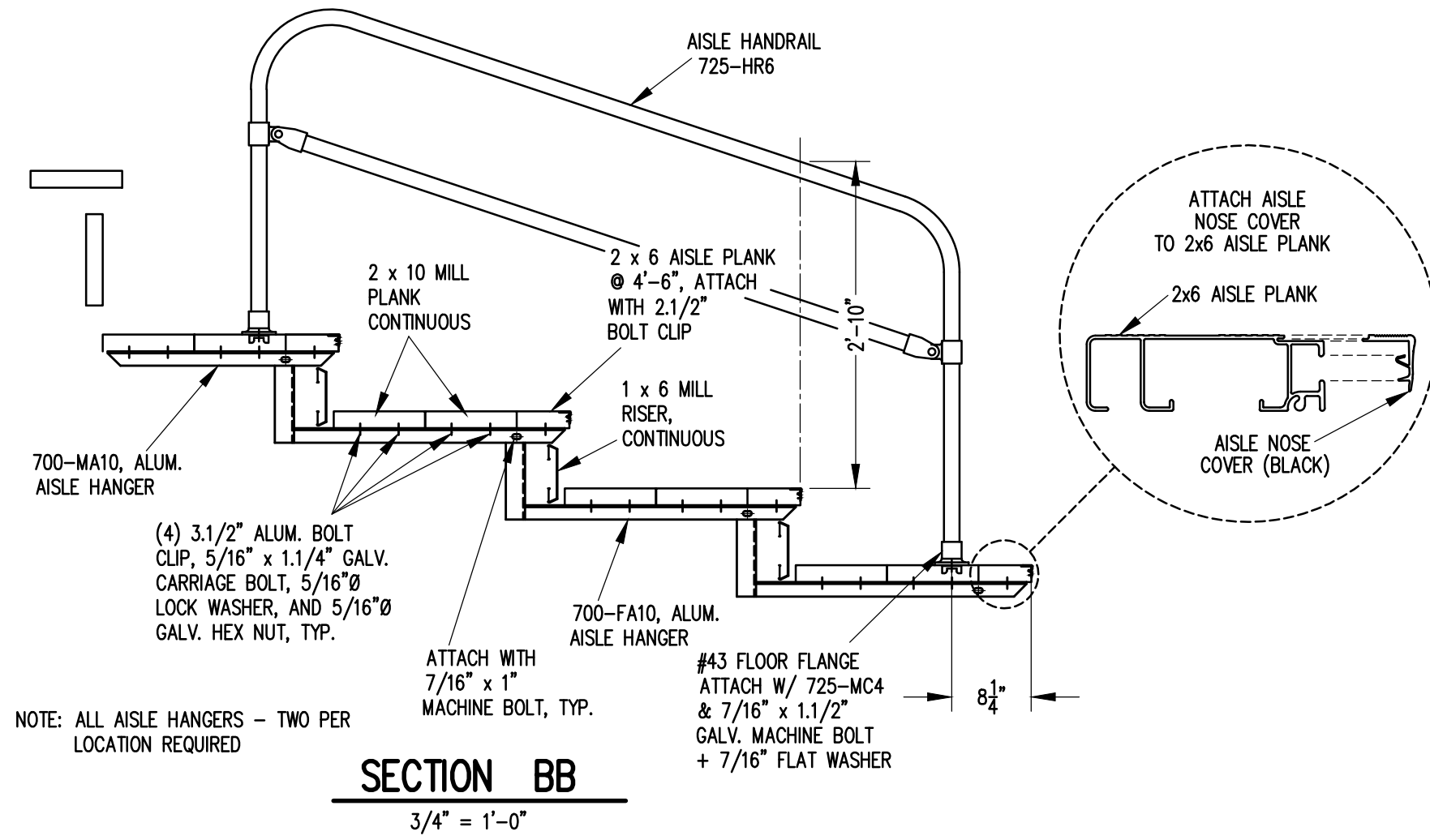
54 NET SEATS @ 18" PER SEAT


		Outdoor Aluminum P.O. BOX 118 GENEVA, ALABAMA 36340 334-684-2296		
				SCALE
DATE	11/2/11			
DR'N	CDK	CKD		
AP'VD				
TITLE			NO.	
DLW 5-21 SEATING/FRAMING PLAN			784-E2068	

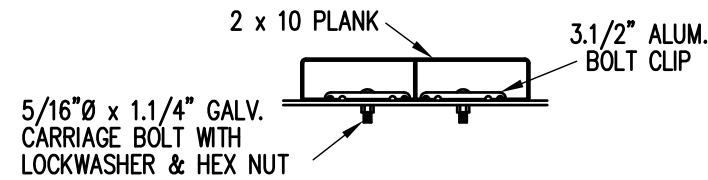


SECTION AA
3/4" = 1'-0"

		Outdoor Aluminum P.O. BOX 118 GENEVA, ALABAMA 36340 334-684-2296		
				SCALE
DATE	11/2/11			
DR'N	GPK CKD			
AP'VD				
TITLE			NO.	
DLW 5 ROW SECTION			784-E2083	

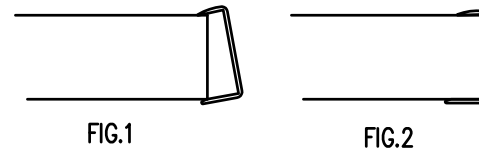


		Outdoor Aluminum		<small>P.O. BOX 118 GENEVA, ALABAMA 36340 334-684-2296</small>	
SCALE	3/4"=1'-0"	REVISIONS		BY	DATE
DATE	11/2/11				
DR'N	CDK CKD				
AP'VD					
TITLE				NO.	
DLW 5 ROW AISLE SECTION				784-E1995	



BOLT CLIP DETAIL

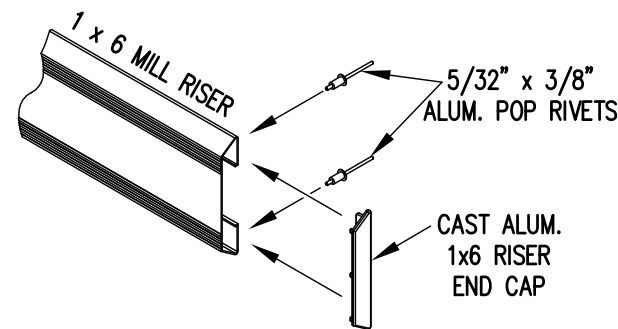
1.1/2" = 1'-0"



- 1) LOCATE THE CHANNEL END CAP AS SHOWN IN FIG. 1.
- 2) TAP END CAP INTO PLACE WITH RUBBER Mallet OR SOFT WOOD. FIG.2
- 3) DRILL 5/32" HOLES THROUGH THE BOTTOM FLANGE AND THE BOTTOM OUTSIDE PLANK FLANGES OF EACH PLANK. INSTALL 5/32" POP RIVETS.

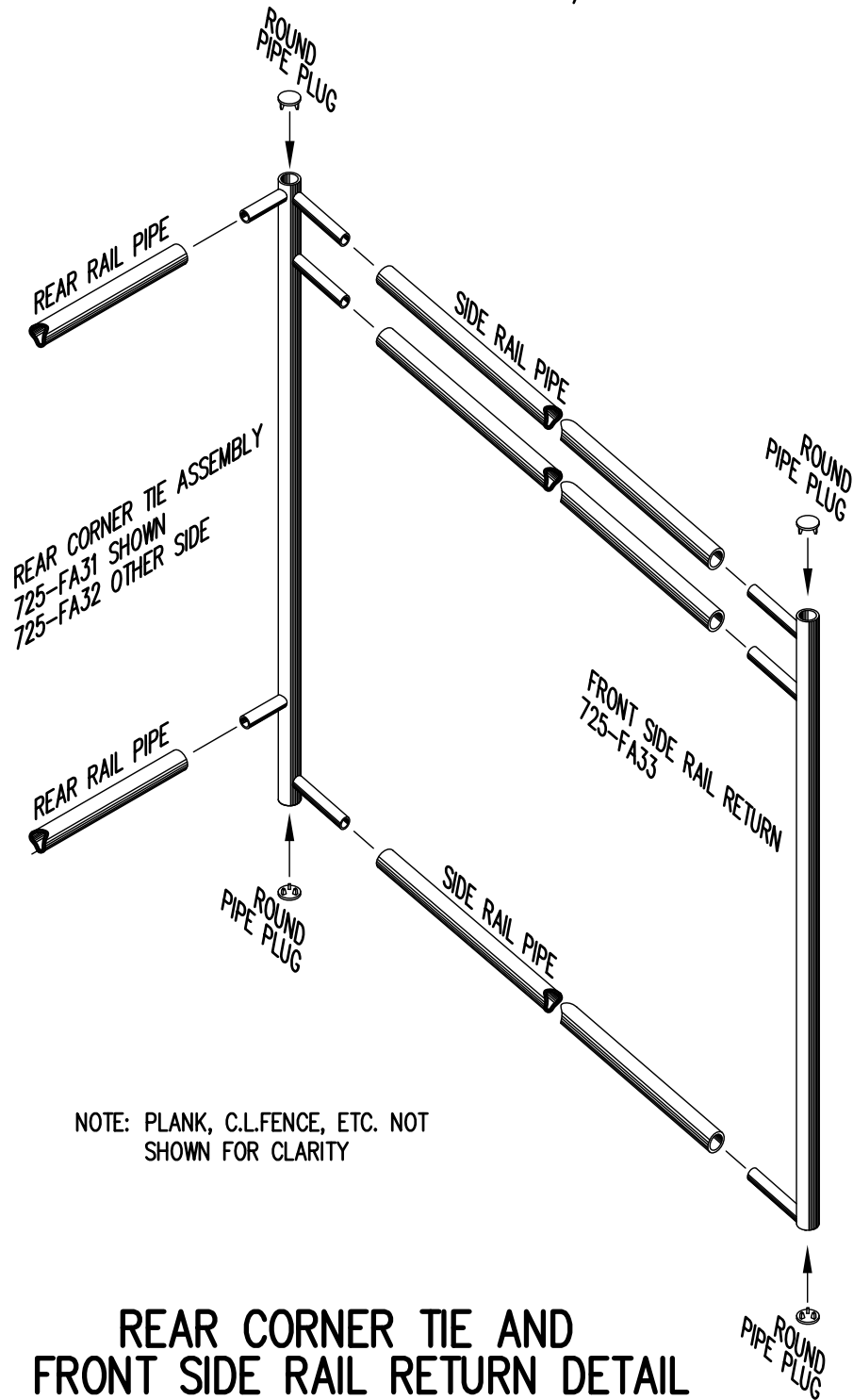
END CAP DETAIL

N.T.S.



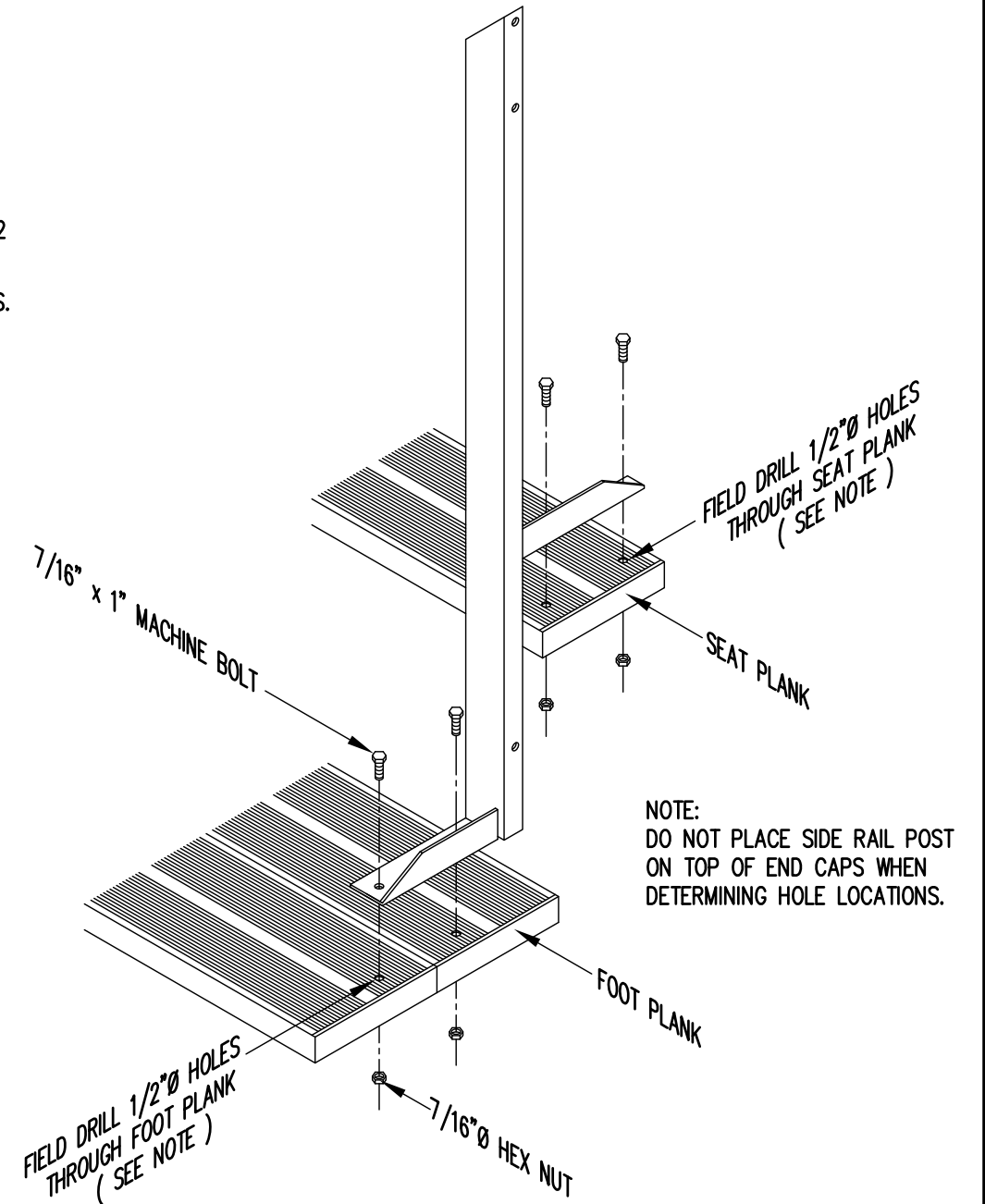
1 x 6 RISER END CAP

N.T.S.



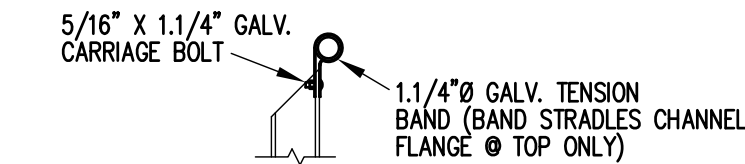
REAR CORNER TIE AND FRONT SIDE RAIL RETURN DETAIL

3/4" = 1'-0"

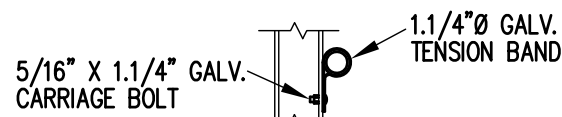


TYP. SIDE RAIL POST ATTACHMENT

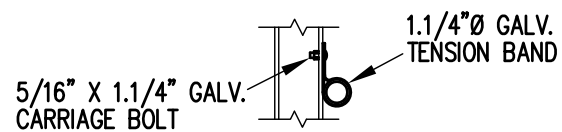
1" = 1'-0"



TOP RAIL



2ND RAIL



BOTTOM RAIL

RAIL PIPE ATTACHMENT

		Outdoor Aluminum P.O. BOX 118 GENEVA, ALABAMA 36340 334-684-2296		
				SCALE
DATE	11/2/11			
DR'N	ADK	CKD		
AP'VD				
TITLE			NO.	
TYPICAL DETAILS			784-E1990	