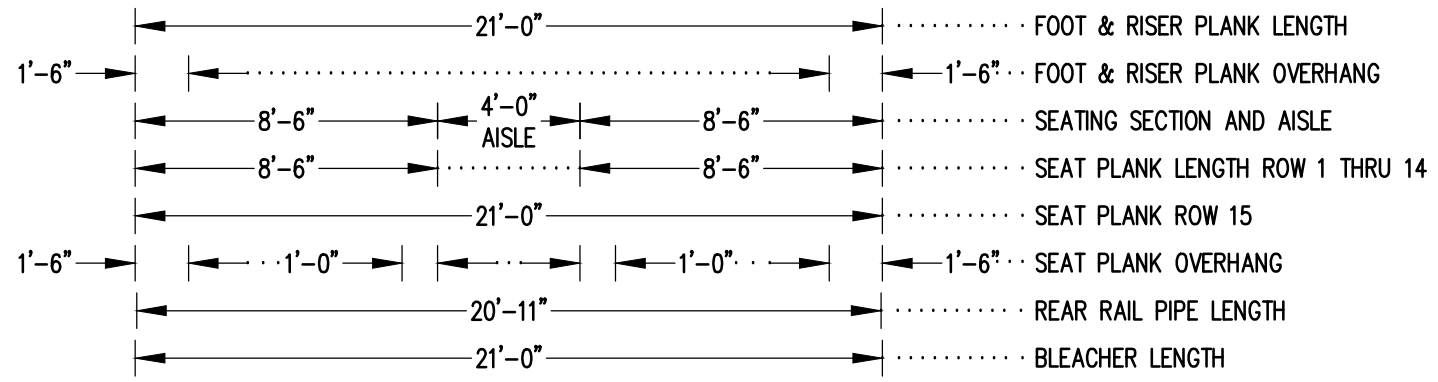
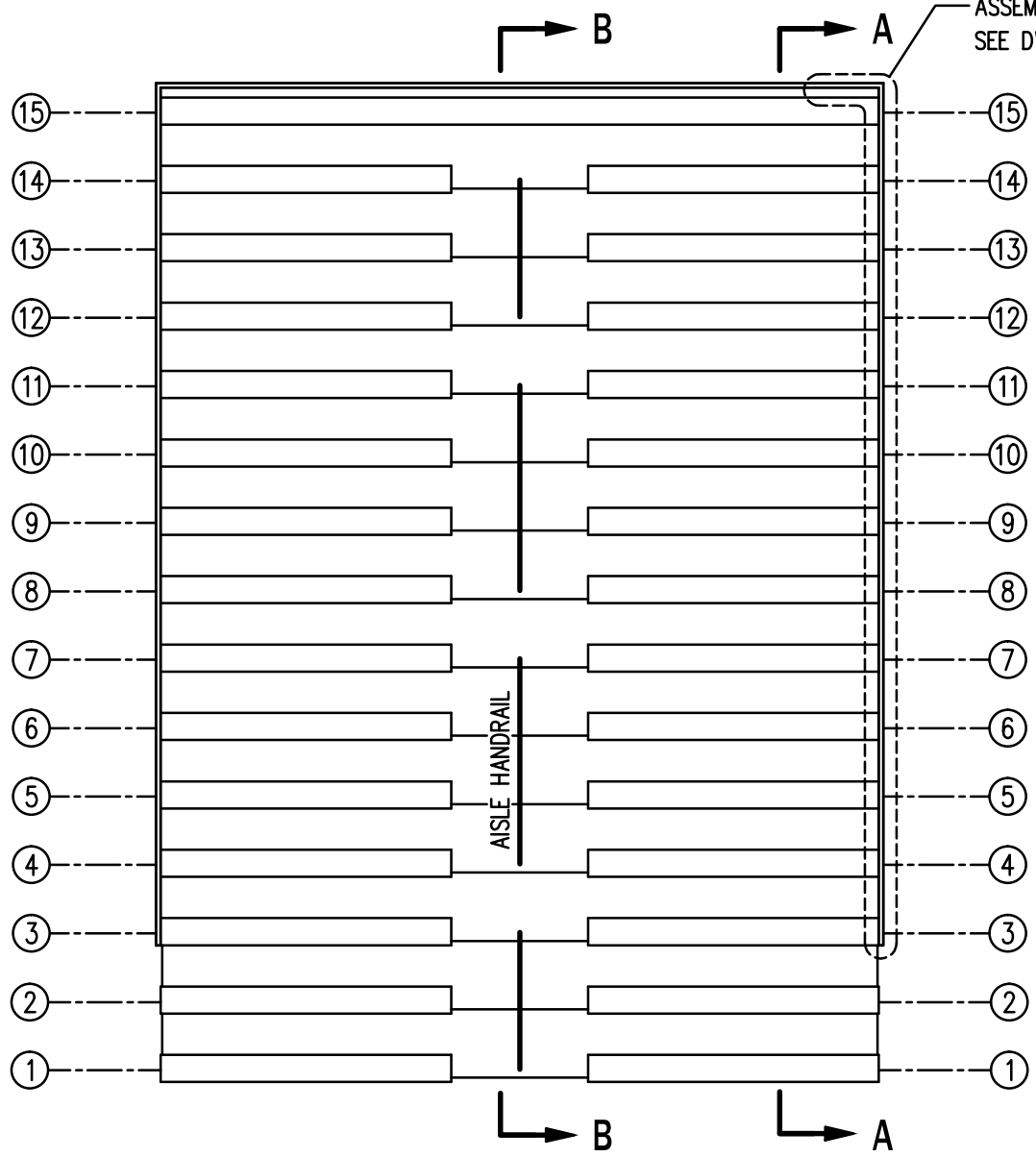



SEE REAR CORNER TIE
ASSEMBLY DETAIL
SEE DWG. 784-E1990

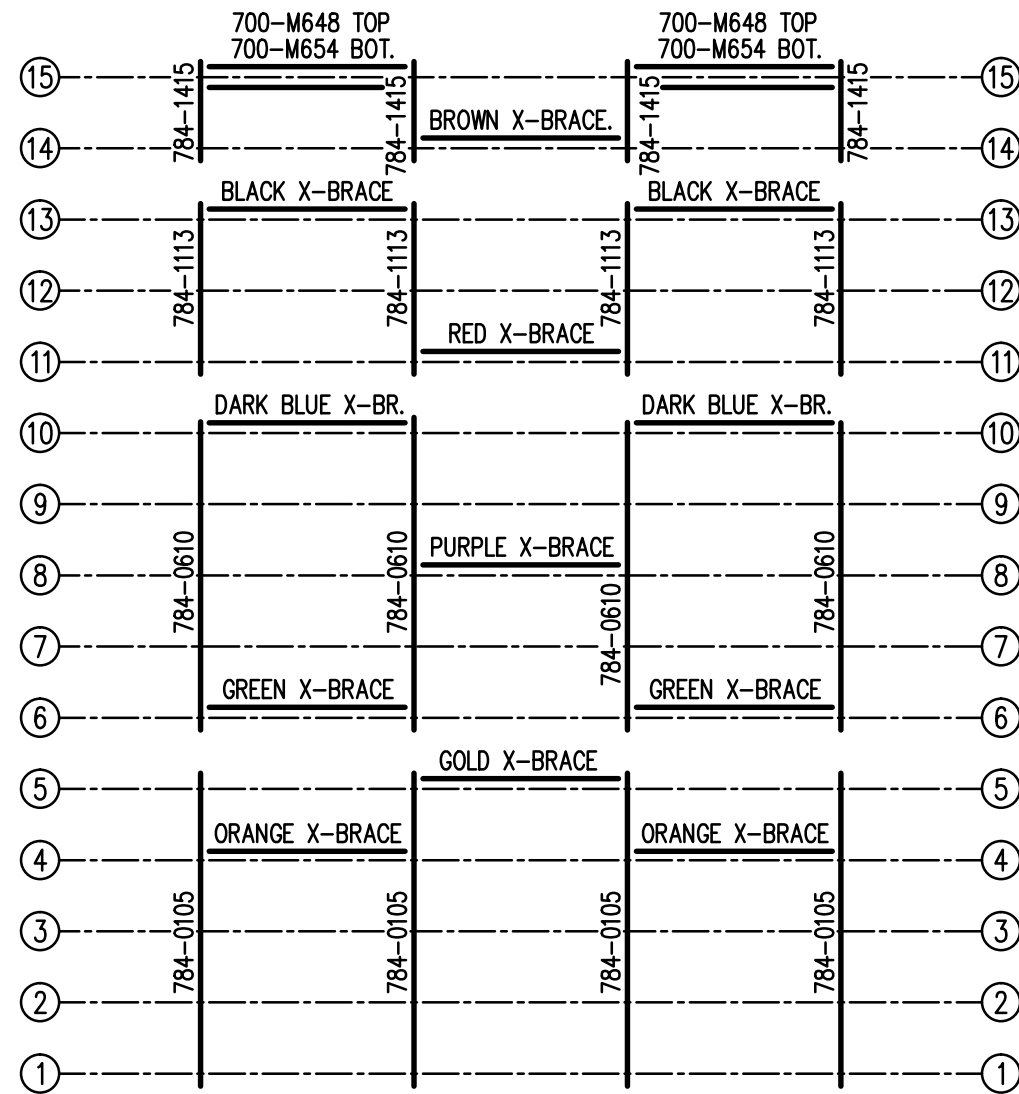


SEATING PLAN

3/16" = 1'-0"

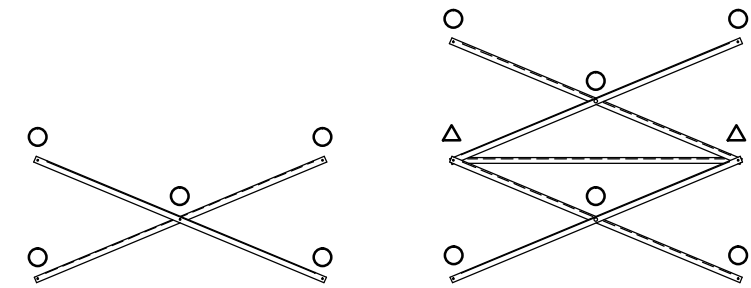
154 NET SEATS @ 18" PER SEAT

		Outdoor Aluminum <small>P.O. BOX 118 GENEVA, ALABAMA 36340 334-684-2296</small>	
DATE 11/2/11			
DR'N <i>CDK</i>	CKD		
AP'VD			
TITLE			NO.
DLW 15-21 SEATING PLAN			784-E2278



FRAMING PLAN


3/16" = 1'-0"

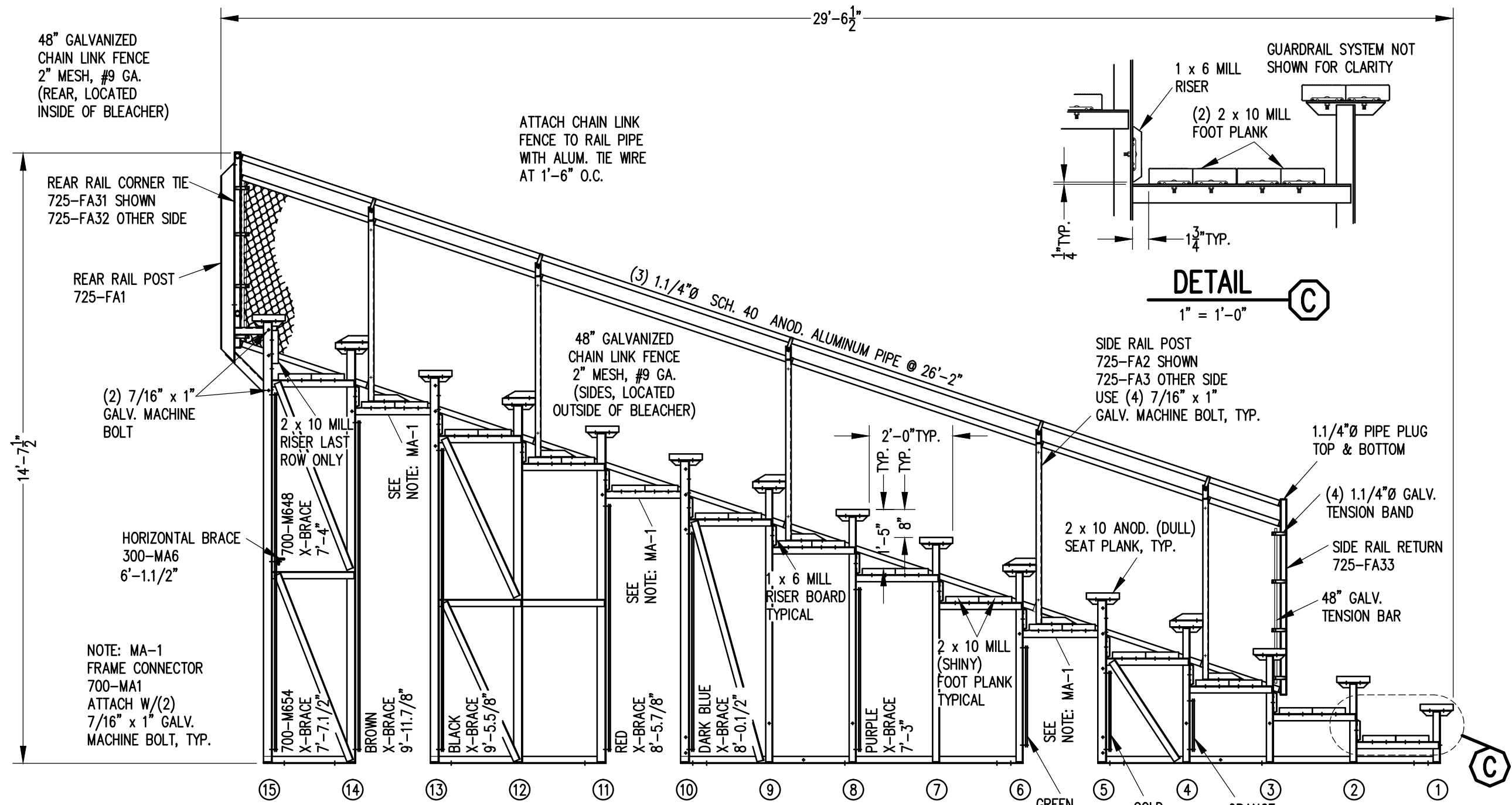


X-BRACE DETAIL

N.T.S.

- 7/16" X 1" GALV. MACH. BOLT
- △ 7/16" X 1.1/2" GALV. MACH. BOLT

		Outdoor Aluminum P.O. BOX 118 GENEVA, ALABAMA 36340 334-684-2296	
DATE 11/2/11			
DR'N <i>CDK</i>	CKD		
AP'VD			
TITLE DLW 15-21 FRAMING PLAN			NO. 784-E2279



48" GALVANIZED CHAIN LINK FENCE 2" MESH, #9 GA. (REAR, LOCATED INSIDE OF BLEACHER)

ATTACH CHAIN LINK FENCE TO RAIL PIPE WITH ALUM. TIE WIRE AT 1'-6" O.C.

GUARDRAIL SYSTEM NOT SHOWN FOR CLARITY

DETAIL C
1" = 1'-0"

SECTION AA
3/8" = 1'-0"

NOTE: MA-1
FRAME CONNECTOR
700-MA1
ATTACH W/(2)
7/16" x 1" GALV.
MACHINE BOLT, TYP.

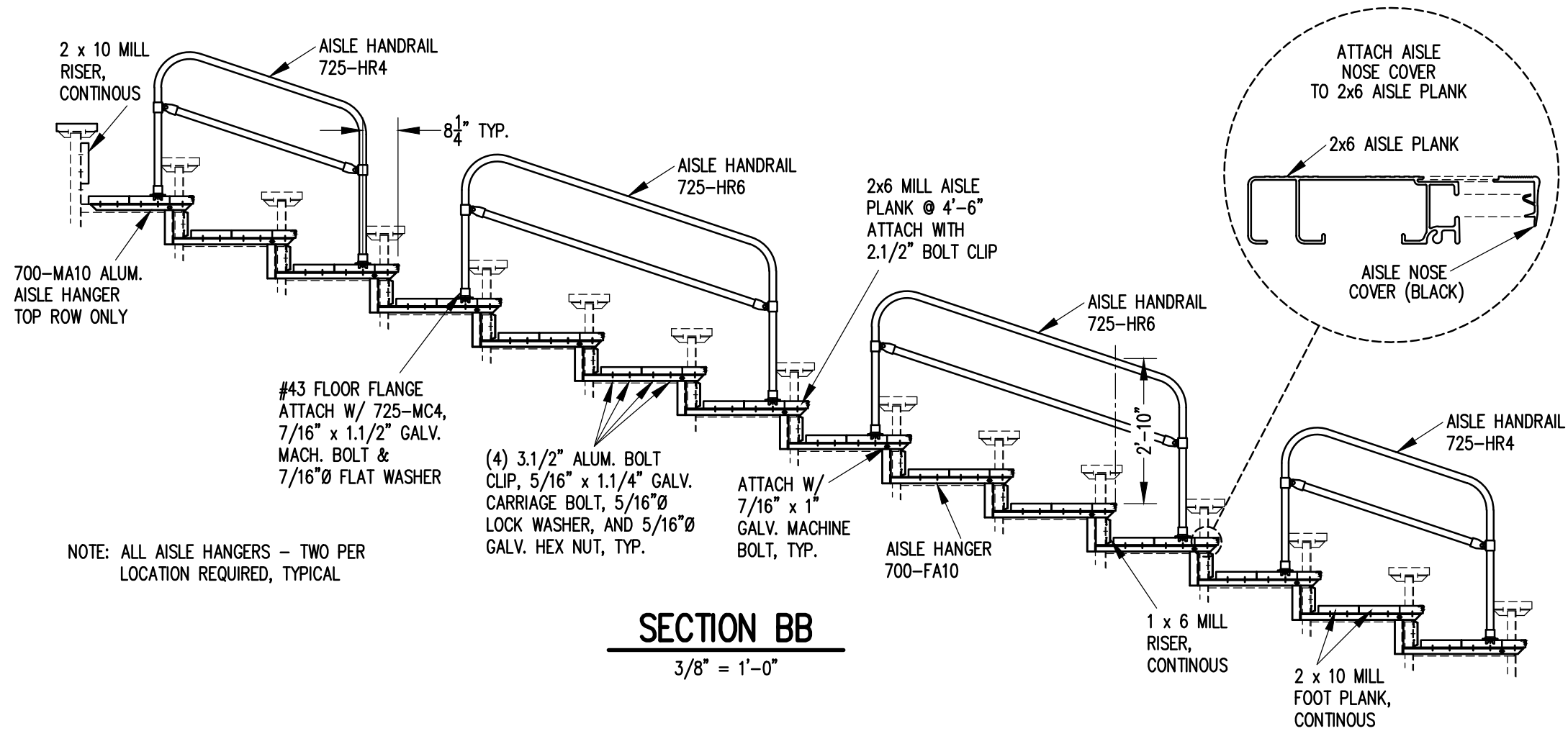
SIDE RAIL POST
725-FA2 SHOWN
725-FA3 OTHER SIDE
USE (4) 7/16" x 1"
GALV. MACHINE BOLT, TYP.



Outdoor Aluminum


P.O. BOX 118
GENEVA, ALABAMA 36340
334-684-2296

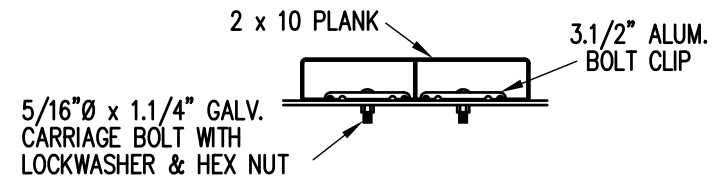
SCALE	REVISIONS	BY	DATE
3/8" = 1'-0"			
DATE			
DR'N			
AP'VD			
TITLE	NO.		
DLW 15 ROW SECTION	784-E2293		



SECTION BB

3/8" = 1'-0"

		Outdoor Aluminum		P.O. BOX 118 GENEVA, ALABAMA 36340 334-684-2296	
SCALE	3/8"=1'-0"	REVISIONS		BY	DATE
DATE	11/2/11				
DR'N	CDK	CKD			
AP'VD					
TITLE				NO.	
DLW 15 ROW AISLE SECTION				784-E2016	



BOLT CLIP DETAIL

1.1/2" = 1'-0"



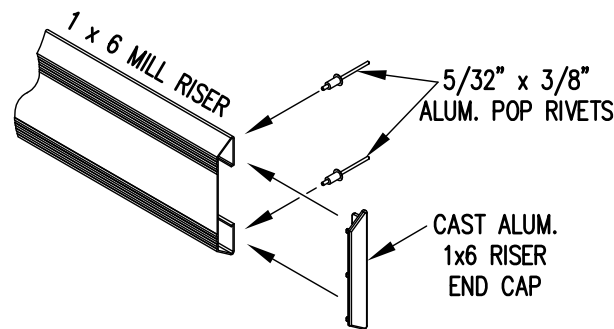
FIG.1

FIG.2

- 1) LOCATE THE CHANNEL END CAP AS SHOWN IN FIG. 1.
- 2) TAP END CAP INTO PLACE WITH RUBBER Mallet OR SOFT WOOD. FIG.2
- 3) DRILL 5/32" HOLES THROUGH THE BOTTOM FLANGE AND THE BOTTOM OUTSIDE PLANK FLANGES OF EACH PLANK. INSTALL 5/32" POP RIVETS.

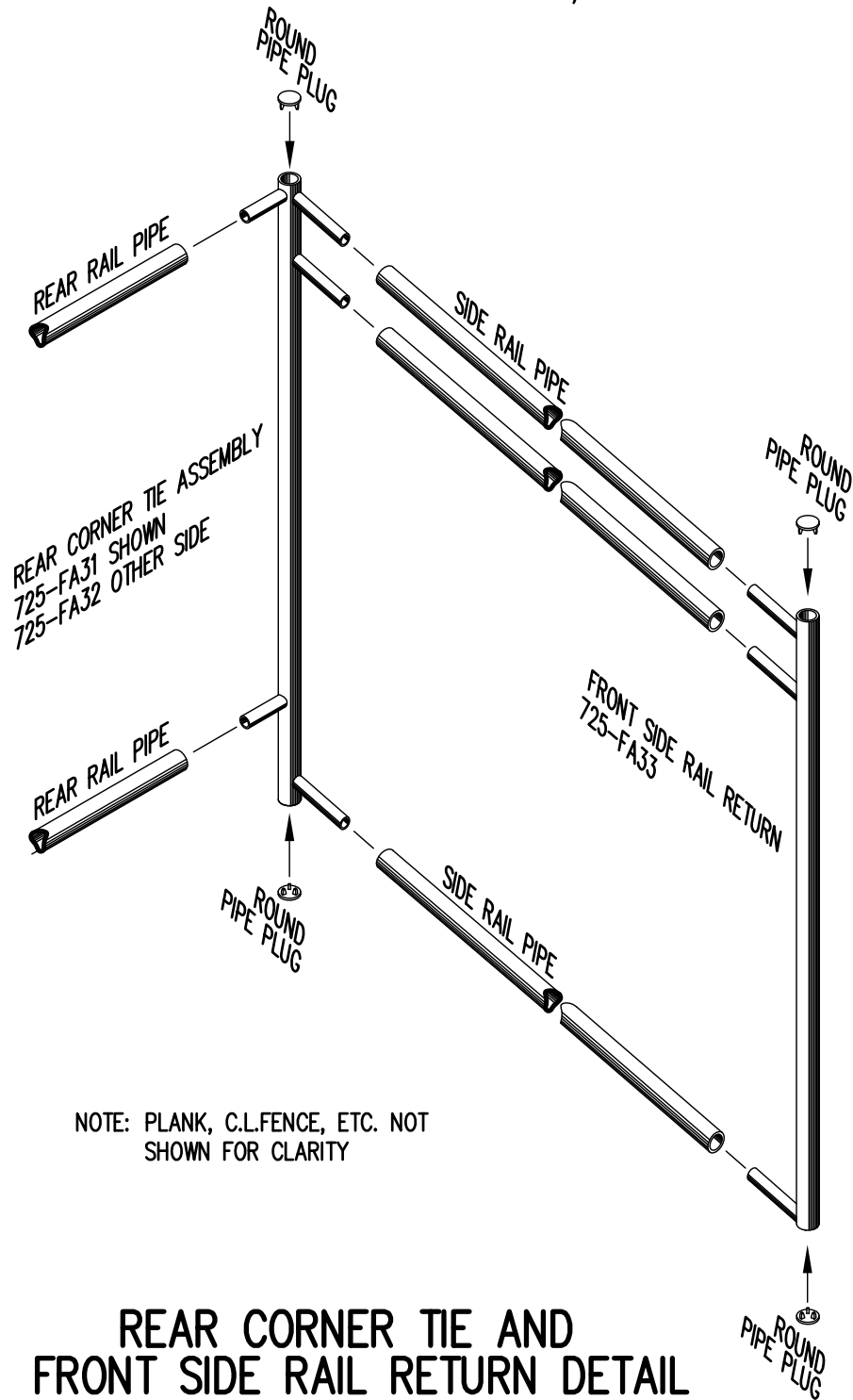
END CAP DETAIL

N.T.S.



1 x 6 RISER END CAP

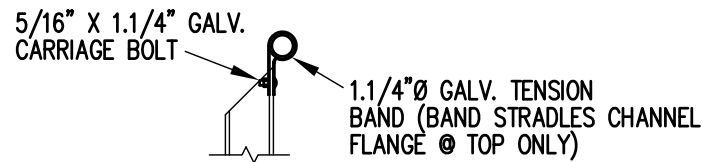
N.T.S.



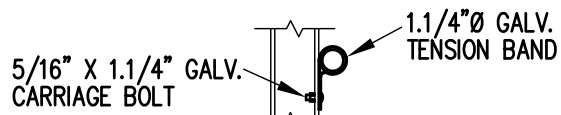
REAR CORNER TIE AND FRONT SIDE RAIL RETURN DETAIL

3/4" = 1'-0"

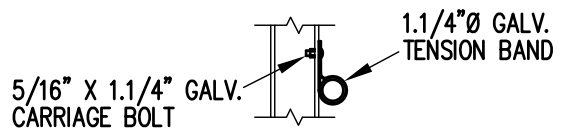
NOTE: PLANK, C.L.FENCE, ETC. NOT SHOWN FOR CLARITY



TOP RAIL

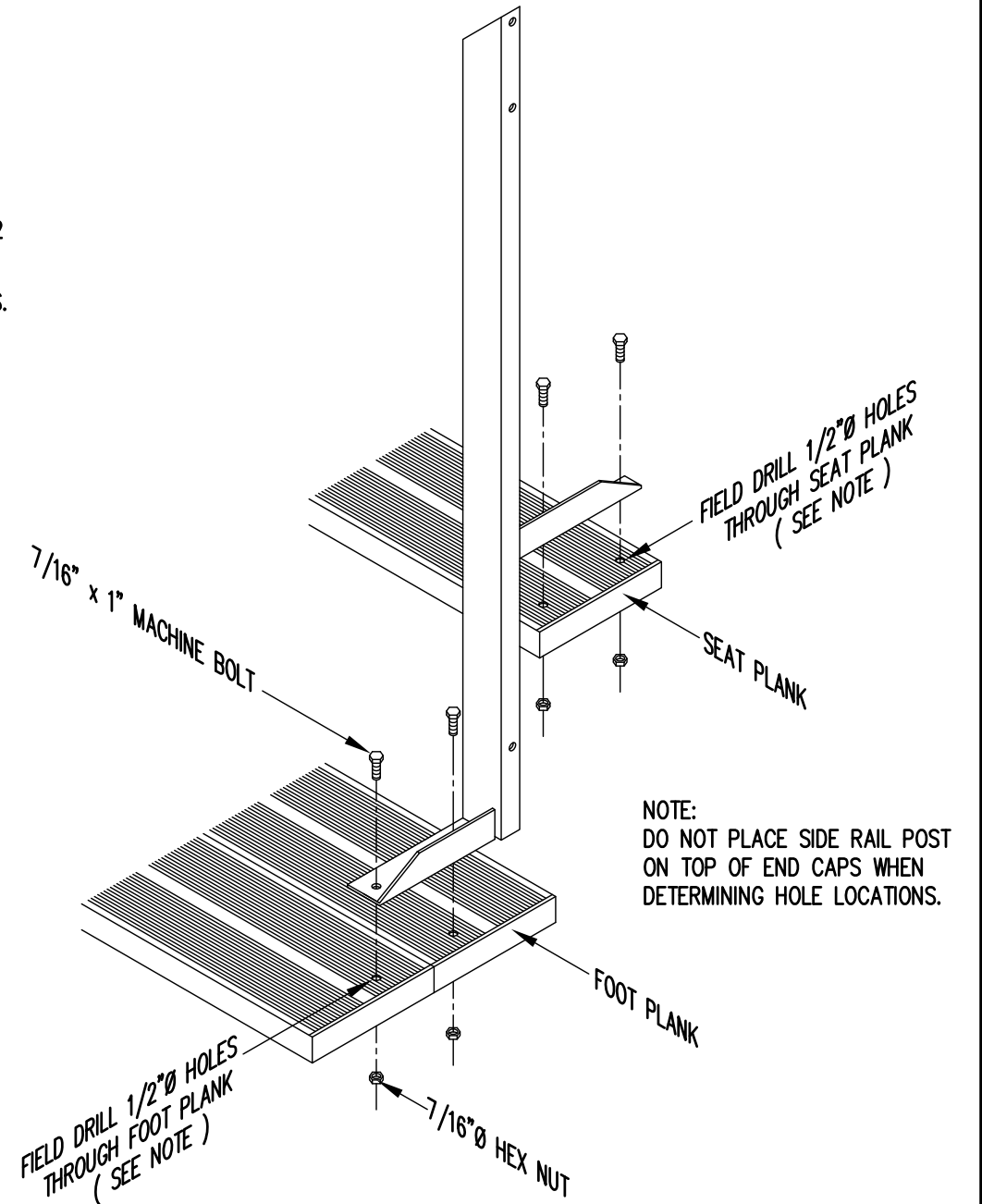


2ND RAIL



BOTTOM RAIL

RAIL PIPE ATTACHMENT



TYP. SIDE RAIL POST ATTACHMENT

1" = 1'-0"

NOTE: DO NOT PLACE SIDE RAIL POST ON TOP OF END CAPS WHEN DETERMINING HOLE LOCATIONS.

		P.O. BOX 118 GENEVA, ALABAMA 36340 334-684-2296				
		SCALE	AS NOTED	REVISIONS	BY	DATE
DATE	11/2/11					
DR'N	ADK	CKD				
AP'VD						
TITLE						NO.
TYPICAL DETAILS						784-E1990