
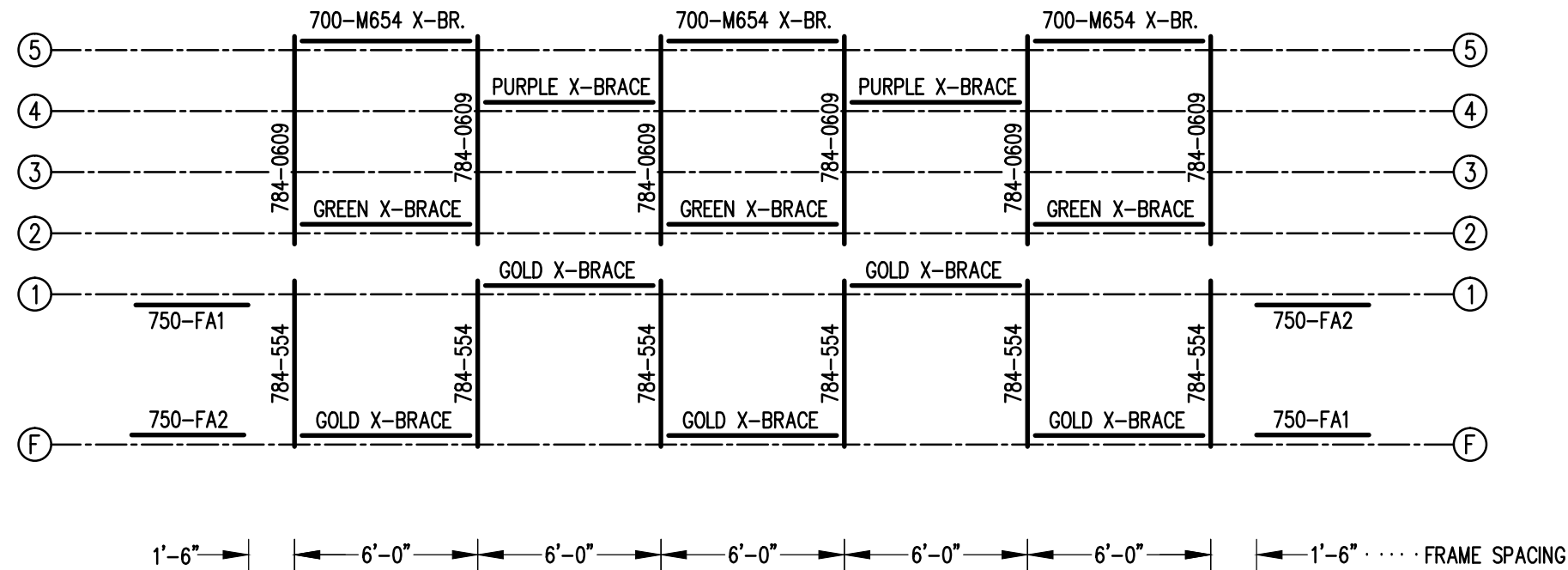


### SEATING PLAN

3/16" = 1'-0"

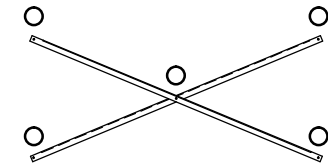
94 NET SEATS @ 18" PER SEAT

		<b>Outdoor Aluminum</b> P.O. BOX 118 GENEVA, ALABAMA 36340 334-684-2296	
DATE <b>11/2/11</b>			
DR'N <i>CDK</i>	CKD		
AP'VD			
TITLE			NO.
DLWE 5-33 SEATING PLAN			<b>784-E2176</b>



**FRAMING PLAN**

3/16" = 1'-0"




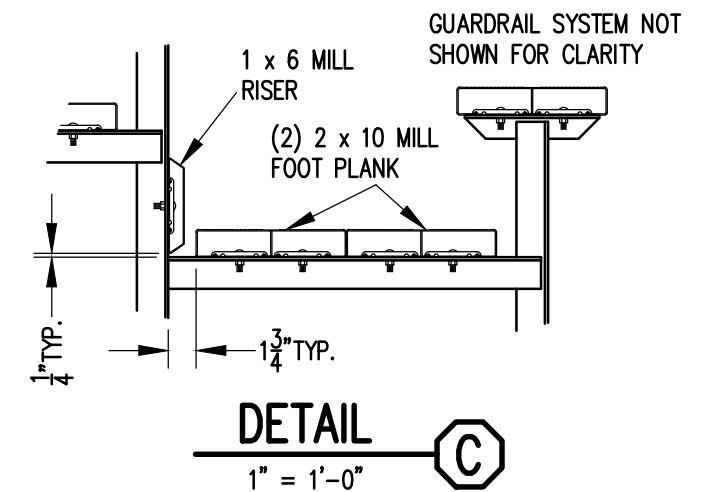
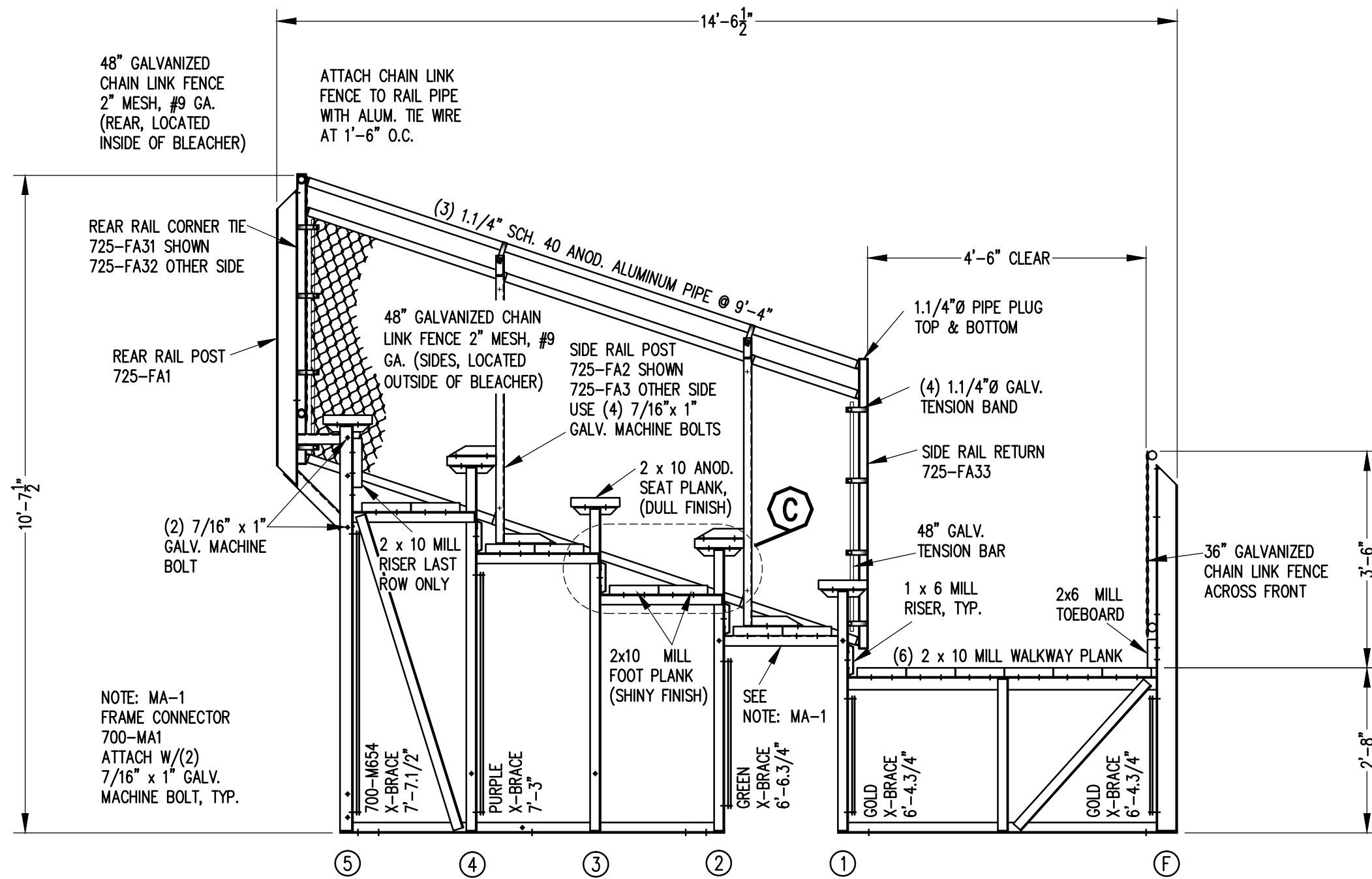
**X-BRACE DETAIL**

N.T.S.

○ 7/16" X 1" GALV. MACH. BOLT


△ 7/16" X 1.1/2" GALV. MACH. BOLT

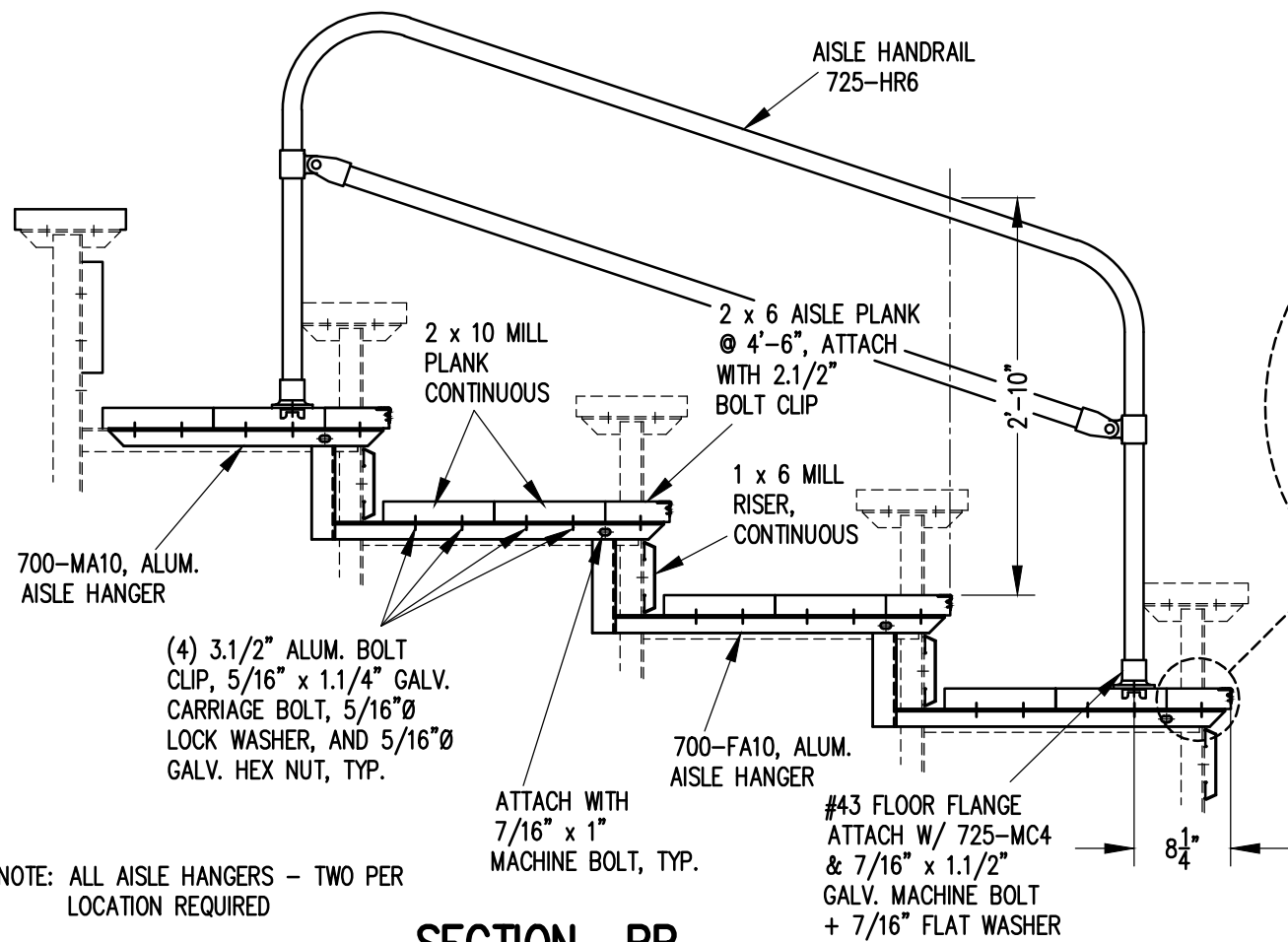
		<b>Outdoor Aluminum</b> P.O. BOX 118 GENEVA, ALABAMA 36340 334-684-2296			
				SCALE	AS NOTED
DATE	11/2/11				
DR'N	GPK	CKD			
AP'VD					
TITLE				NO.	
DLWE 5-33 FRAMING PLAN				784-E2246	



**SECTION AA**

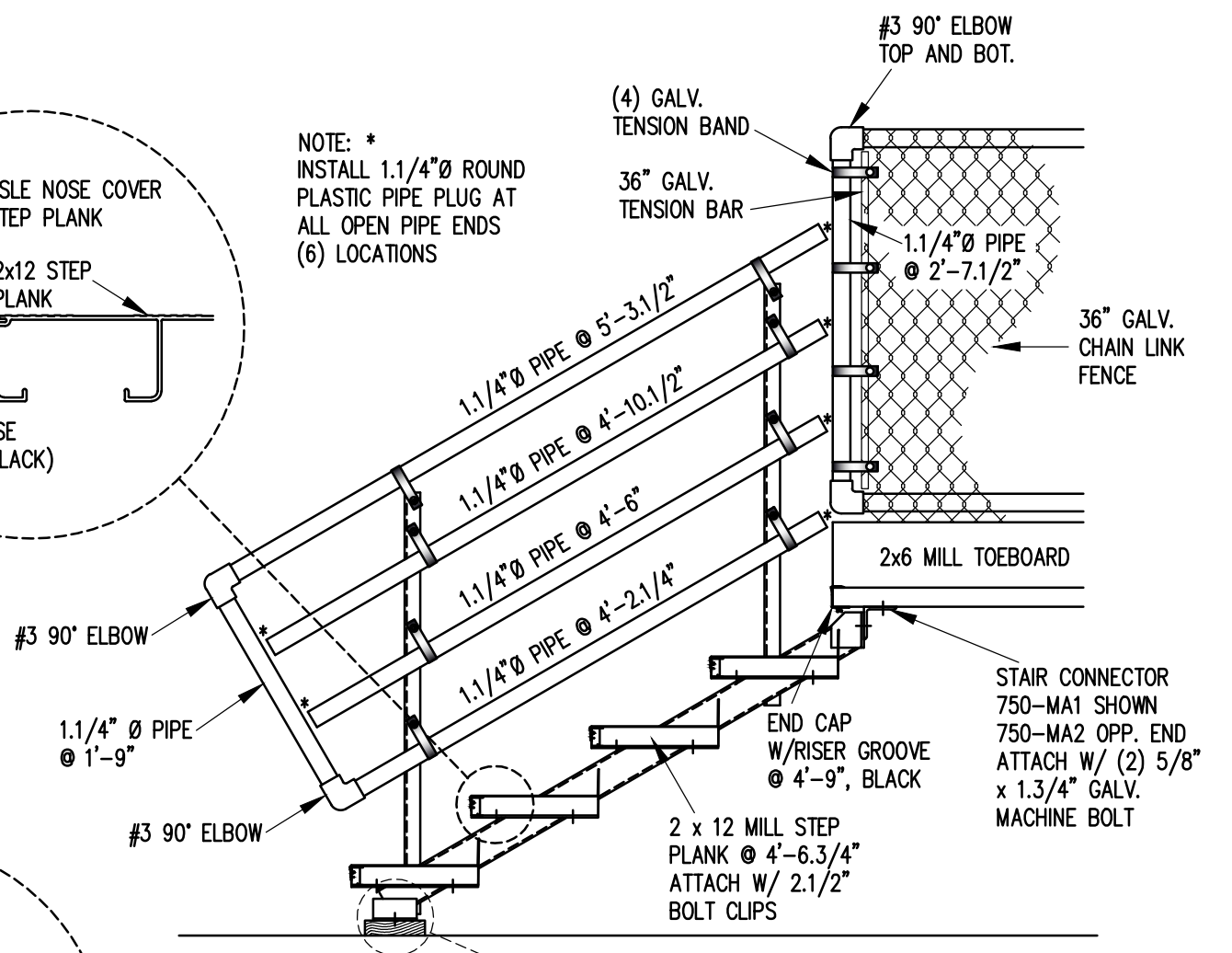
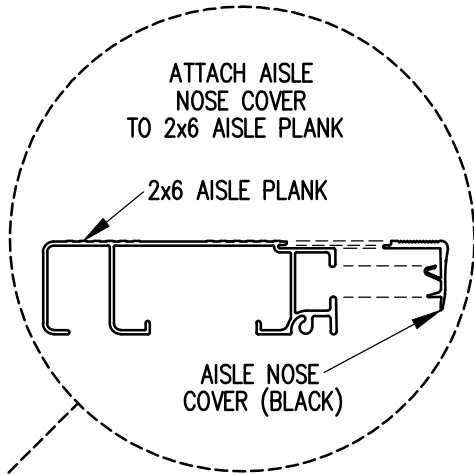
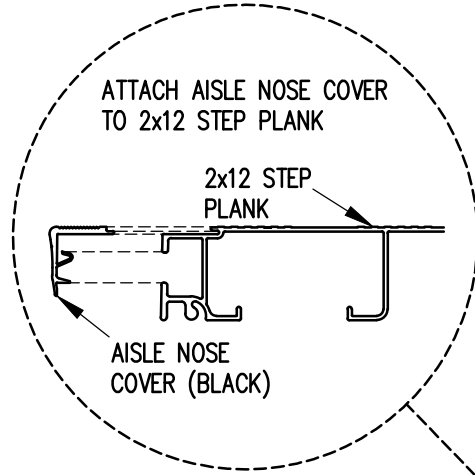
1/2" = 1'-0"

		<b>Outdoor Aluminum</b> P.O. BOX 118 GENEVA, ALABAMA 36340 334-684-2296					
				SCALE	AS NOTED	REVISIONS	
DATE	11/2/11						
DR'N	CDK	CKD					
AP'VD							
TITLE	DLWE 5 ROW SECTION			NO.	784-E2181		

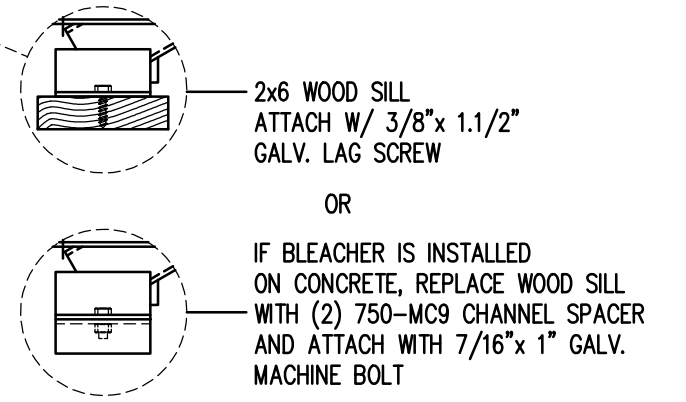


**SECTION BB**  
3/4" = 1'-0"

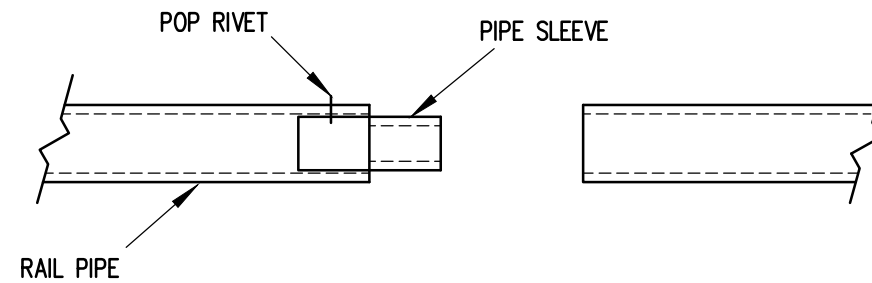
NOTE: ALL AISLE HANGERS - TWO PER LOCATION REQUIRED



**SECTION CC**  
3/4" = 1'-0"



		P.O. BOX 118 GENEVA, ALABAMA 36340 334-684-2296			
		SCALE	REVISIONS	BY	DATE
SCALE	3/4" = 1'-0"				
DATE	11/2/11				
DR'N	CDK	CKD			
AP'VD					
TITLE	DLWE 5 ROW AISLE & STAIR SECTIONS		NO.	784-E1997	

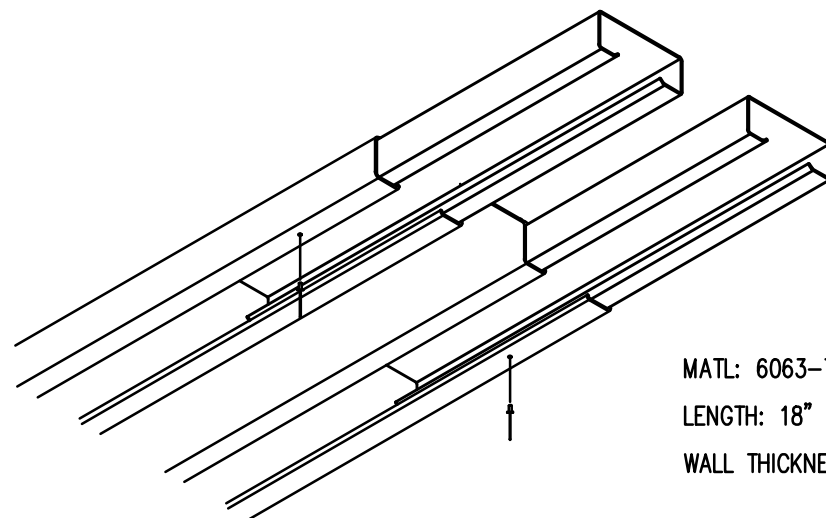


### PIPE SLEEVE ASSEMBLY

1.1/2" = 1' 0"

- 1) INSERT PIPE SLEEVE APPROXIMATELY HALFWAY INTO THE RAIL PIPE. FASTEN PIPE SLEEVE WITH (1) ALUMINUM POP RIVET (5/32" X 5/8")
- 2) SLIDE THE END OF THE ADJOINING RAILPIPE OVER THE PIPE SLEEVE UNTIL THE TWO RAILS ARE FLUSH.

NOTE: PIPE SLEEVES SHOULD BE ATTACHED ON ONLY ONE END TO ALLOW FOR EXPANSION.




MATL: 6063-T6 ALUMN.  
 LENGTH: 18"  
 WALL THICKNESS: .062"

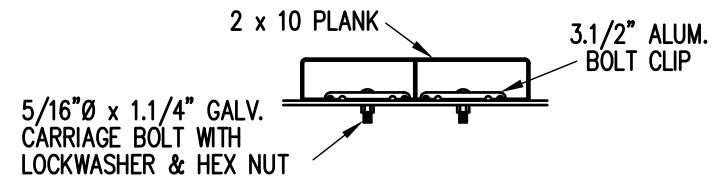
### PLANK SPLICE SLEEVE ASSEMBLY

(TYP. © ALL PLANK SPLICES)

- 1) INSERT SLEEVES APPROXIMATELY HALFWAY INTO THE PLANK WITH THE ENDS STAGGERED ABOUT 1/2". FASTEN SLEEVE WITH (1) ALUMINUM POP RIVET.
- 2) SLIDE THE END OF THE ADJOINING PLANK OVER THE SLEEVES UNTIL THE TWO PLANKS ARE SNUG.

NOTE: SLEEVES SHOULD BE ATTACHED ON ONLY ONE END TO ALLOW FOR EXPANSION.

		<b>Outdoor Aluminum</b> <small>P.O. BOX 118        GENEVA, ALABAMA 36340        334-684-2296</small>	
DATE <b>11/2/11</b>			
DR'N <i>CDK</i>	CKD		
AP'VD			
TITLE <b>SPLICE SLEEVE ASSEMBLY</b>			NO. <b>784-E1994</b>



**BOLT CLIP DETAIL**

1.1/2" = 1'-0"



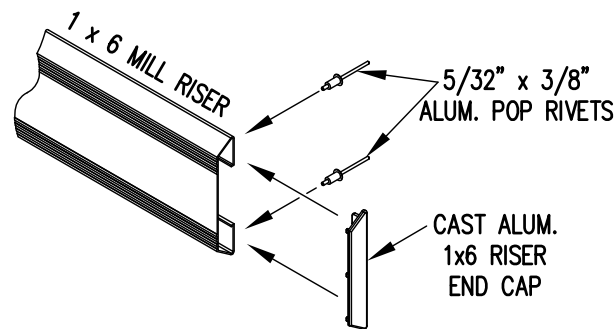
FIG.1

FIG.2

- 1) LOCATE THE CHANNEL END CAP AS SHOWN IN FIG. 1.
- 2) TAP END CAP INTO PLACE WITH RUBBER Mallet OR SOFT WOOD. FIG.2
- 3) DRILL 5/32" HOLES THROUGH THE BOTTOM FLANGE AND THE BOTTOM OUTSIDE PLANK FLANGES OF EACH PLANK. INSTALL 5/32" POP RIVETS.

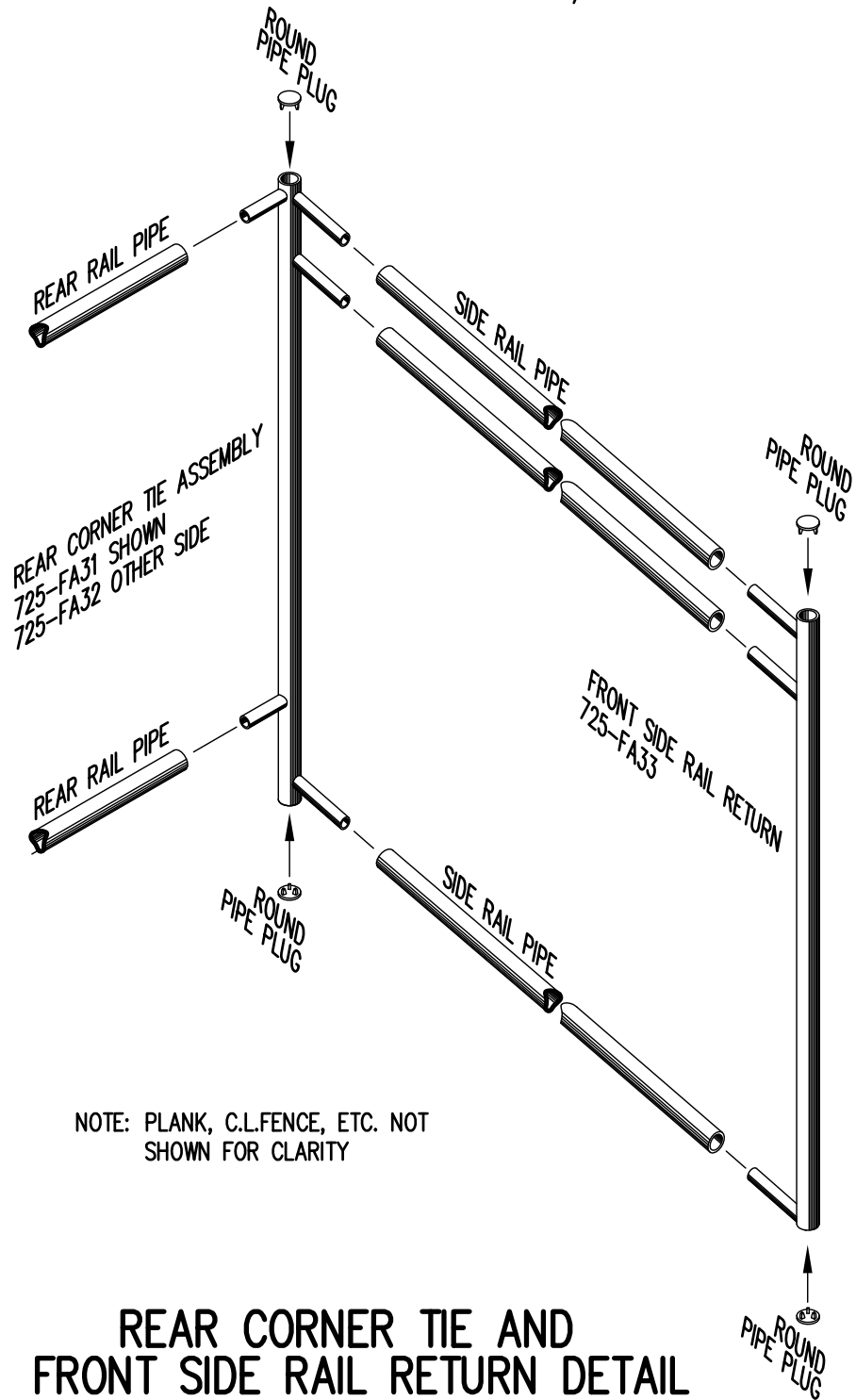
**END CAP DETAIL**

N.T.S.



**1 x 6 RISER END CAP**

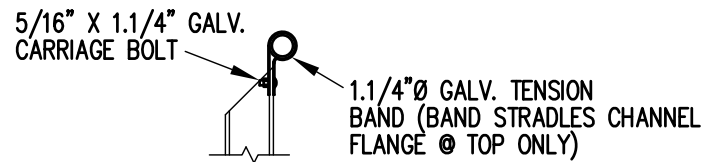
N.T.S.



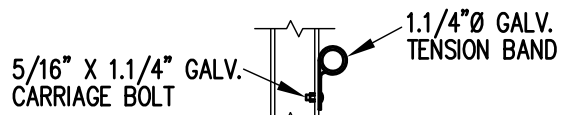
**REAR CORNER TIE AND FRONT SIDE RAIL RETURN DETAIL**

3/4" = 1'-0"

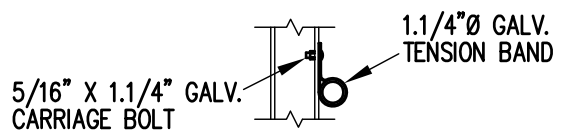
NOTE: PLANK, C.L.FENCE, ETC. NOT SHOWN FOR CLARITY



**TOP RAIL**

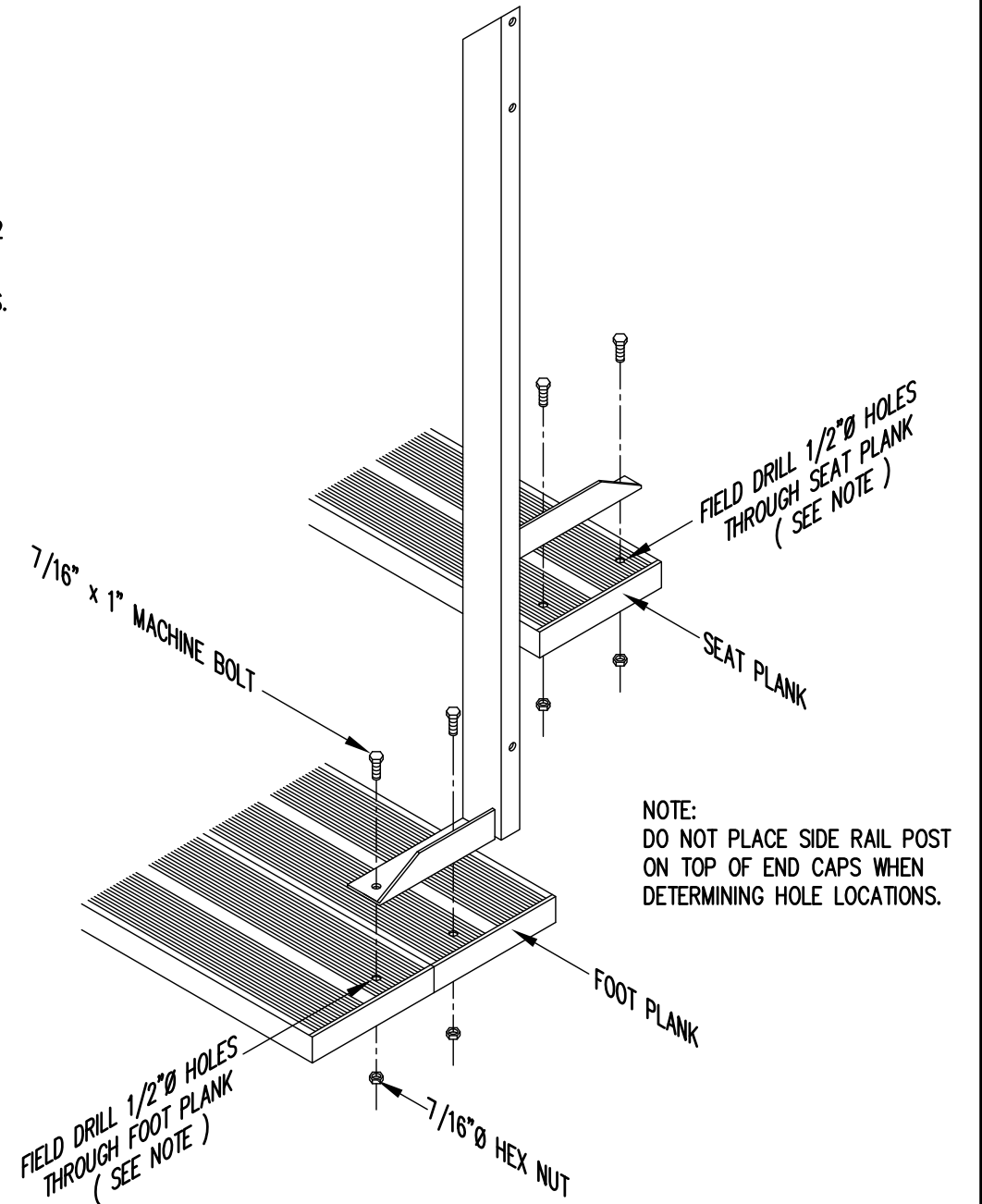


**2ND RAIL**



**BOTTOM RAIL**

**RAIL PIPE ATTACHMENT**



**TYP. SIDE RAIL POST ATTACHMENT**

1" = 1'-0"

NOTE: DO NOT PLACE SIDE RAIL POST ON TOP OF END CAPS WHEN DETERMINING HOLE LOCATIONS.

		P.O. BOX 118 GENEVA, ALABAMA 36340 334-684-2296			
		SCALE	AS NOTED	REVISIONS	BY
DATE	11/2/11				
DR'N	ADK	CKD			
AP'VD					
TITLE				NO.	
TYPICAL DETAILS				784-E1990	