

PLEASE READ THROUGH INSTRUCTIONS ONCE BEFORE ASSEMBLING

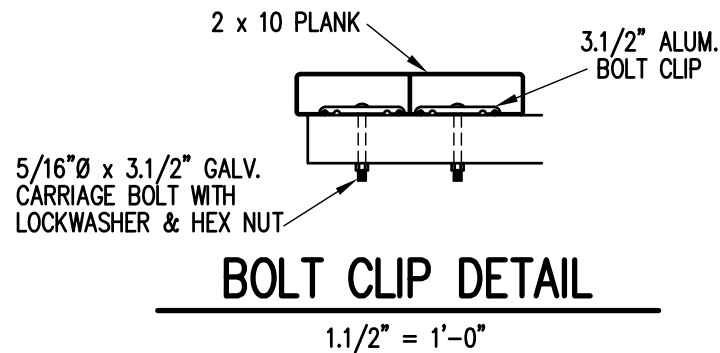
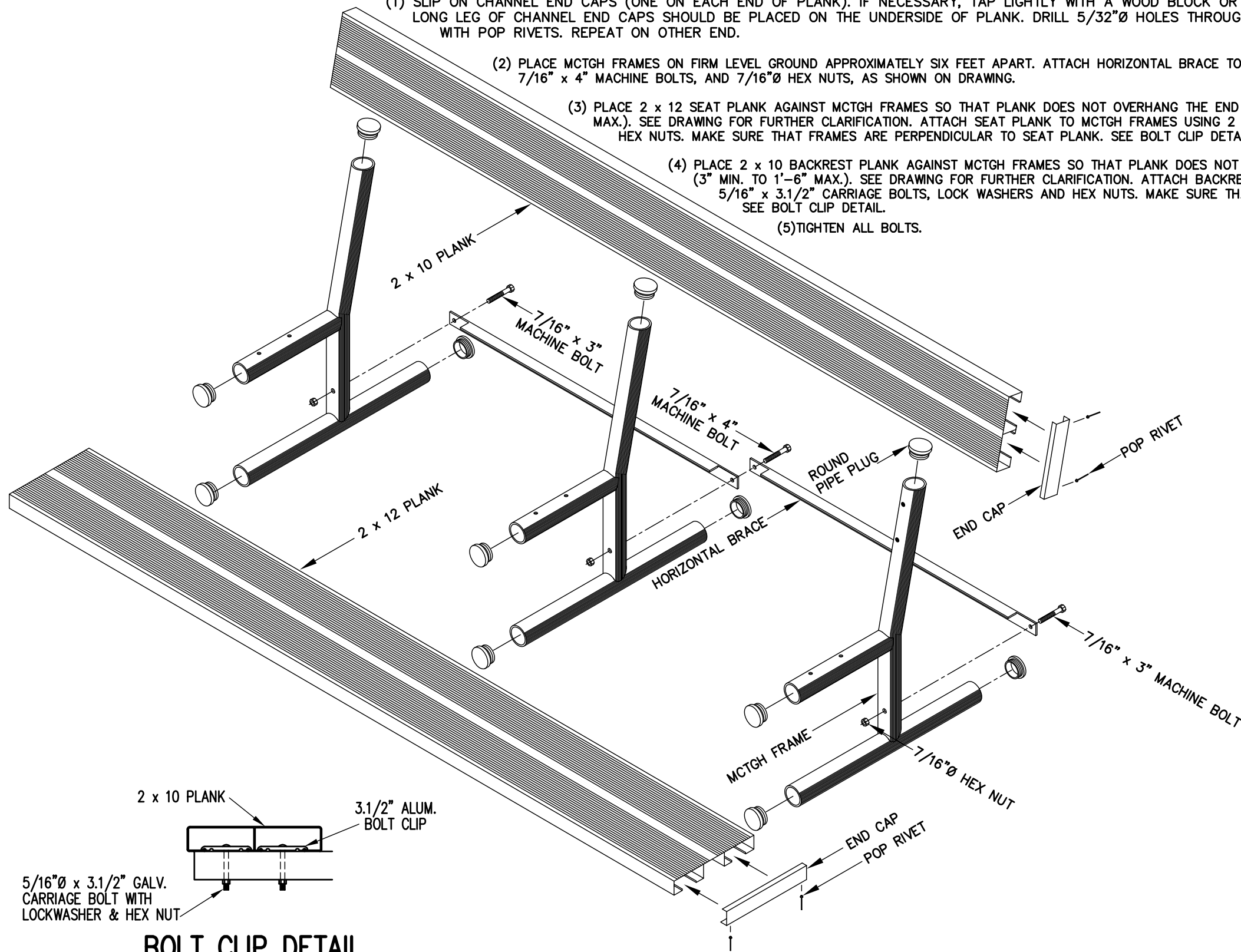
(1) SLIP ON CHANNEL END CAPS (ONE ON EACH END OF PLANK). IF NECESSARY, TAP LIGHTLY WITH A WOOD BLOCK OR RUBBER Mallet. TAP ONLY ON THE CORNERS OF THE CHANNEL END CAPS. LONG LEG OF CHANNEL END CAPS SHOULD BE PLACED ON THE UNDERSIDE OF PLANK. DRILL $5/32"$ HOLES THROUGH CHANNEL END CAPS AND PLANK AS SHOWN ON DRAWING AND ATTACH WITH POP RIVETS. REPEAT ON OTHER END.

(2) PLACE MCTGH FRAMES ON FIRM LEVEL GROUND APPROXIMATELY SIX FEET APART. ATTACH HORIZONTAL BRACE TO FRAMES WITH $7/16"$ x $3"$ MACHINE BOLTS, $7/16"$ x $4"$ MACHINE BOLTS, AND $7/16"$ HEX NUTS, AS SHOWN ON DRAWING.

(3) PLACE 2 x 12 SEAT PLANK AGAINST MCTGH FRAMES SO THAT PLANK DOES NOT OVERHANG THE END MOST FRAMES MORE THAN 1'-6" (3" MIN. TO 1'-6" MAX.). SEE DRAWING FOR FURTHER CLARIFICATION. ATTACH SEAT PLANK TO MCTGH FRAMES USING 2 BOLT CLIPS, $5/16"$ x $3.1/2"$ CARRIAGE BOLTS, LOCK WASHERS AND HEX NUTS. MAKE SURE THAT FRAMES ARE PERPENDICULAR TO SEAT PLANK. SEE BOLT CLIP DETAIL.

(4) PLACE 2 x 10 BACKREST PLANK AGAINST MCTGH FRAMES SO THAT PLANK DOES NOT OVERHANG THE END MOST FRAMES MORE THAN 1'-6" (3" MIN. TO 1'-6" MAX.). SEE DRAWING FOR FURTHER CLARIFICATION. ATTACH BACKREST PLANK TO MCTGH FRAMES USING 2 BOLT CLIPS, $5/16"$ x $3.1/2"$ CARRIAGE BOLTS, LOCK WASHERS AND HEX NUTS. MAKE SURE THAT FRAMES ARE PERPENDICULAR TO BACKREST PLANK. SEE BOLT CLIP DETAIL.

(5) TIGHTEN ALL BOLTS.



		P.O. BOX 118 GENEVA, ALABAMA 36340 334-684-2296					
		SCALE	N.T.S.	REVISIONS		BY	DATE
DATE	11/20/00	SEAT FROM OAX-025 TO OAX-055		GDK	02/23/01		
DR'N	CHM	CKD	BACKREST FROM OAX-035 TO OAX-045		GDK	02/23/01	
AP'VD			REDRAWN		WHW	02/13/09	
TITLE						NO.	
MCTGH BENCH						300-E69	