

PLEASE READ THROUGH INSTRUCTIONS ONCE BEFORE ASSEMBLING

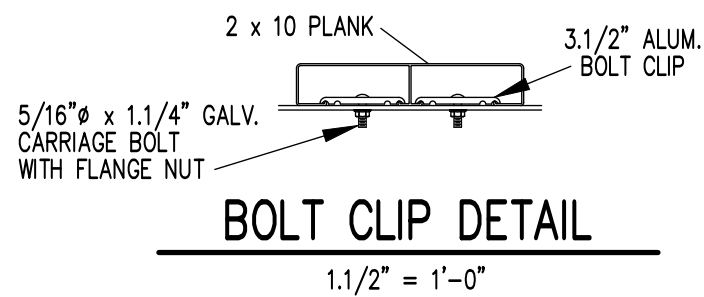
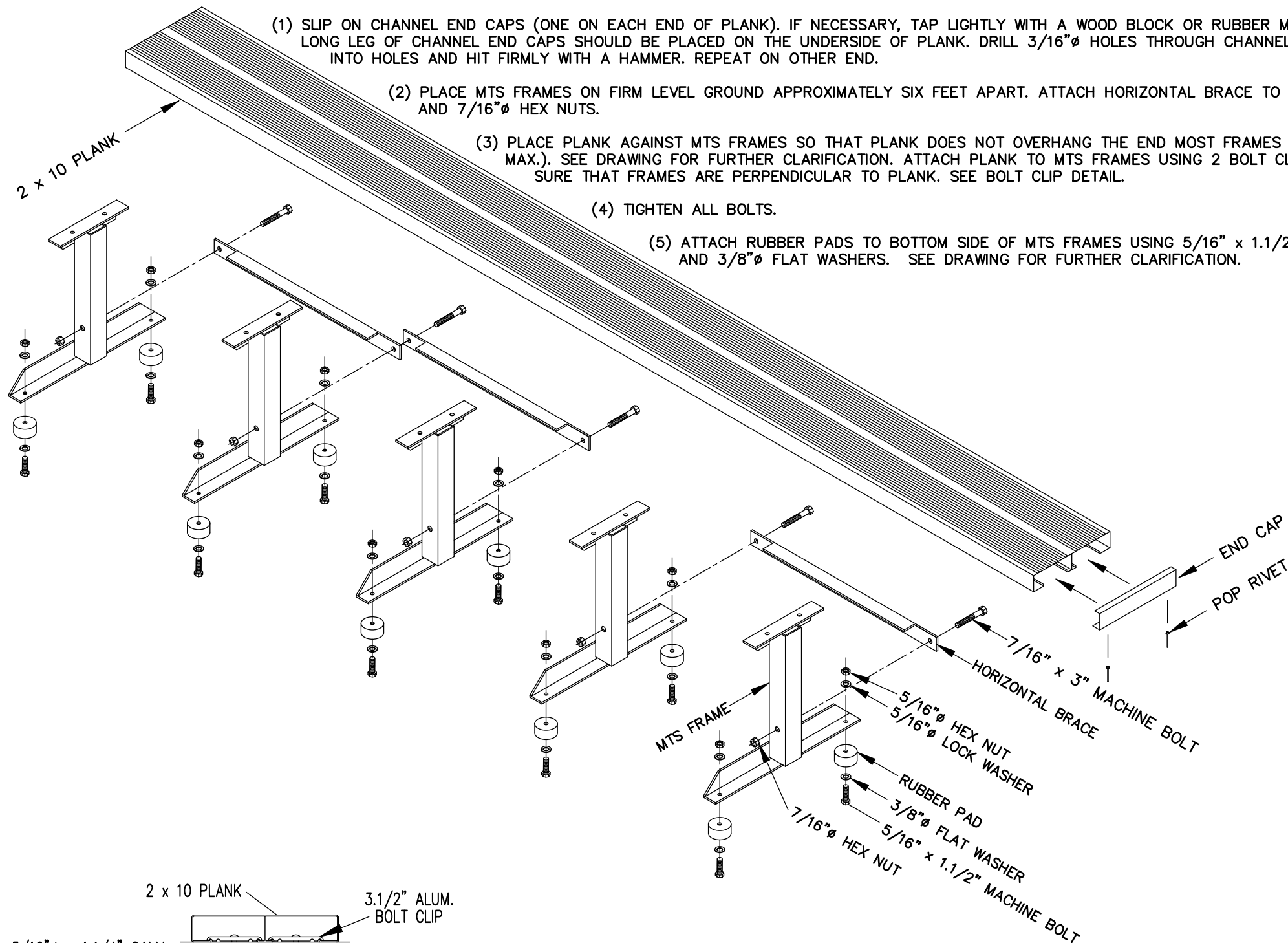
(1) SLIP ON CHANNEL END CAPS (ONE ON EACH END OF PLANK). IF NECESSARY, TAP LIGHTLY WITH A WOOD BLOCK OR RUBBER Mallet. TAP ONLY ON THE CORNERS OF THE CHANNEL END CAPS. LONG LEG OF CHANNEL END CAPS SHOULD BE PLACED ON THE UNDERSIDE OF PLANK. DRILL  $3/16"$  HOLES THROUGH CHANNEL END CAPS AND PLANK AS SHOWN ON DRAWING. INSERT DRIVE RIVETS INTO HOLES AND HIT FIRMLY WITH A HAMMER. REPEAT ON OTHER END.


(2) PLACE MTS FRAMES ON FIRM LEVEL GROUND APPROXIMATELY SIX FEET APART. ATTACH HORIZONTAL BRACE TO FRAMES AS SHOWN ON DRAWING WITH  $7/16"$  x 3" MACHINE BOLTS AND  $7/16"$  HEX NUTS.

(3) PLACE PLANK AGAINST MTS FRAMES SO THAT PLANK DOES NOT OVERHANG THE END MOST FRAMES MORE THAN 1'-6" (3" MIN. TO 1'-6" MAX.). SEE DRAWING FOR FURTHER CLARIFICATION. ATTACH PLANK TO MTS FRAMES USING 2 BOLT CLIPS,  $5/16"$  x 1.1/4" CARRIAGE BOLTS AND FLANGE NUTS. MAKE SURE THAT FRAMES ARE PERPENDICULAR TO PLANK. SEE BOLT CLIP DETAIL.

(4) TIGHTEN ALL BOLTS.

(5) ATTACH RUBBER PADS TO BOTTOM SIDE OF MTS FRAMES USING  $5/16"$  x 1.1/2" MACHINE BOLTS FLANGE NUTS, AND  $3/8"$  FLAT WASHERS. SEE DRAWING FOR FURTHER CLARIFICATION.



		<b>Outdoor Aluminum</b> P.O. BOX 118 GENEVA, ALABAMA 36340 334-684-2296			
				SCALE	N.T.S.
DATE	02/13/09	ADJUSTED FOR FLANGE NUTS		GDK	05/08/24
DR'N	WHW	CKD			
AP'VD					
TITLE					NO.
MTS BENCH W/RUBBER PADS					<b>300-E152</b>