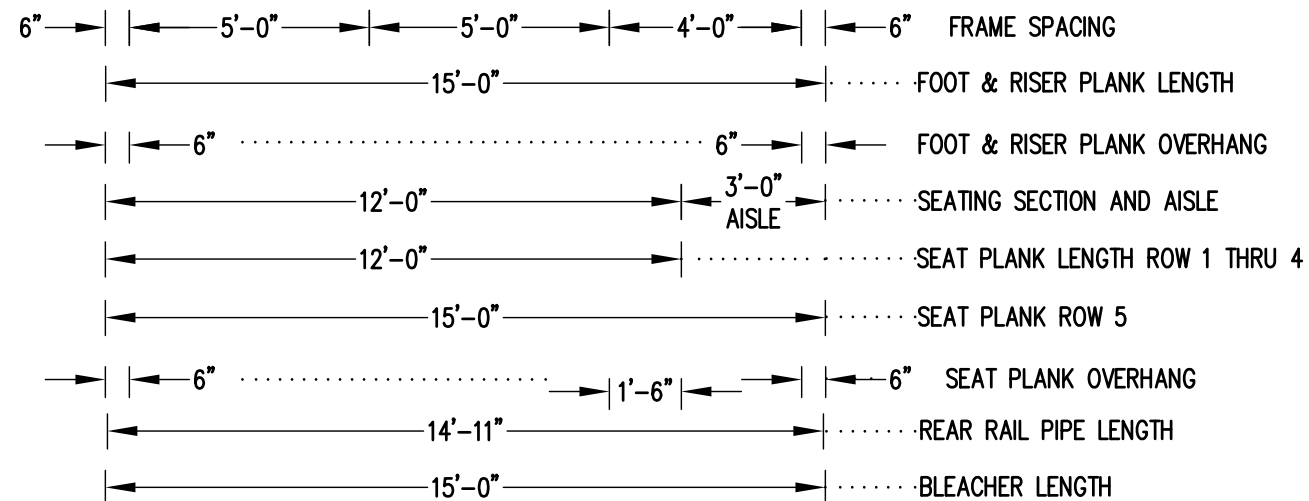


X-BRACE DETAIL

N.T.S.

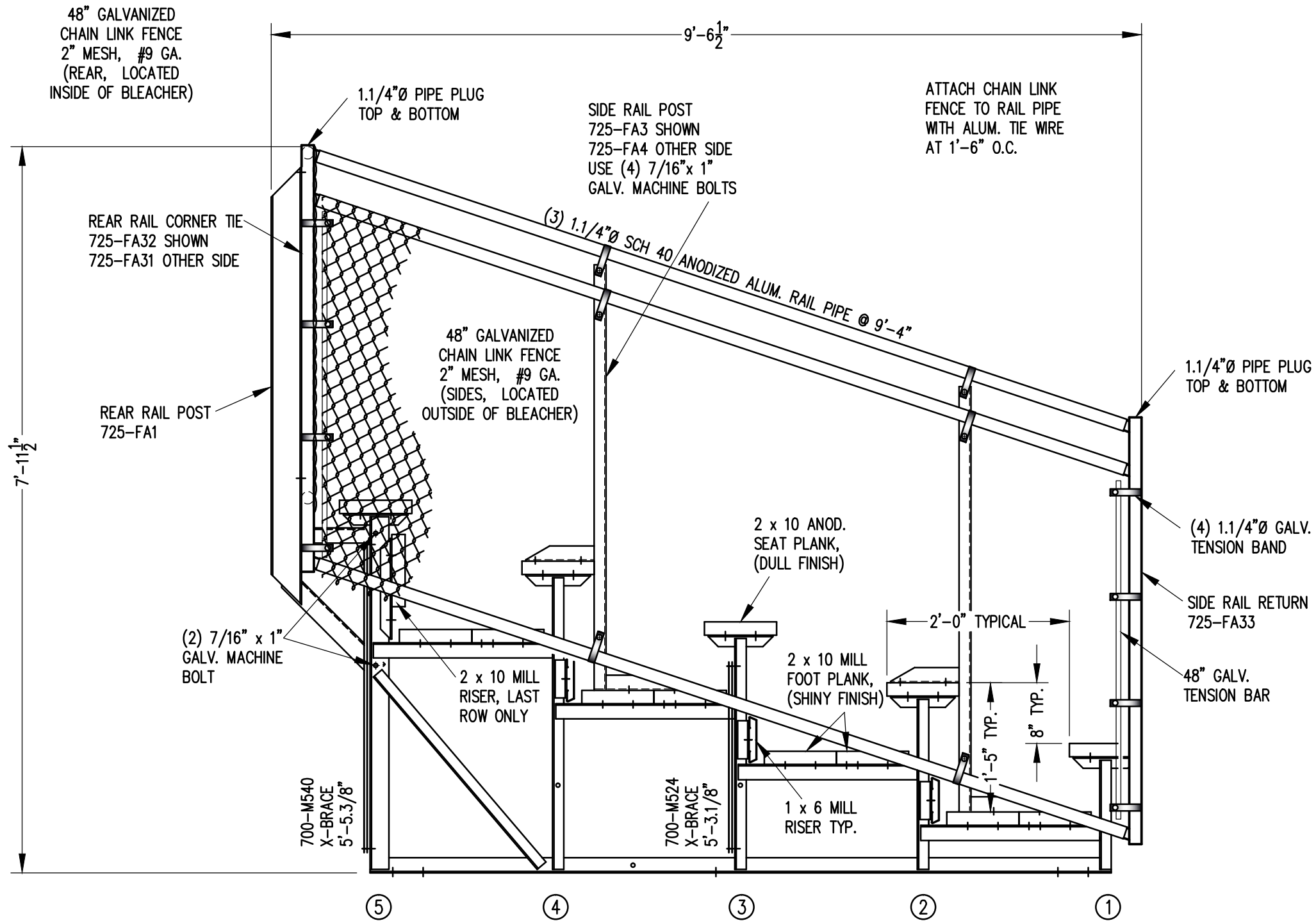
- 2" TUBE COLUMN BOLT SCHEDULE 3" TUBE COLUMN BOLT SCHEDULE
- 7/16" X 1" GALV. MACH. BOLT ○ 7/16" X 1" GALV. MACH. BOLT
 - △ 7/16" X 3" GALV. MACH. BOLT △ 7/16" X 4" GALV. MACH. BOLT




SEATING & FRAMING PLAN

1/4" = 1'-0"
42 NET SEATS @ 18" PER SEAT

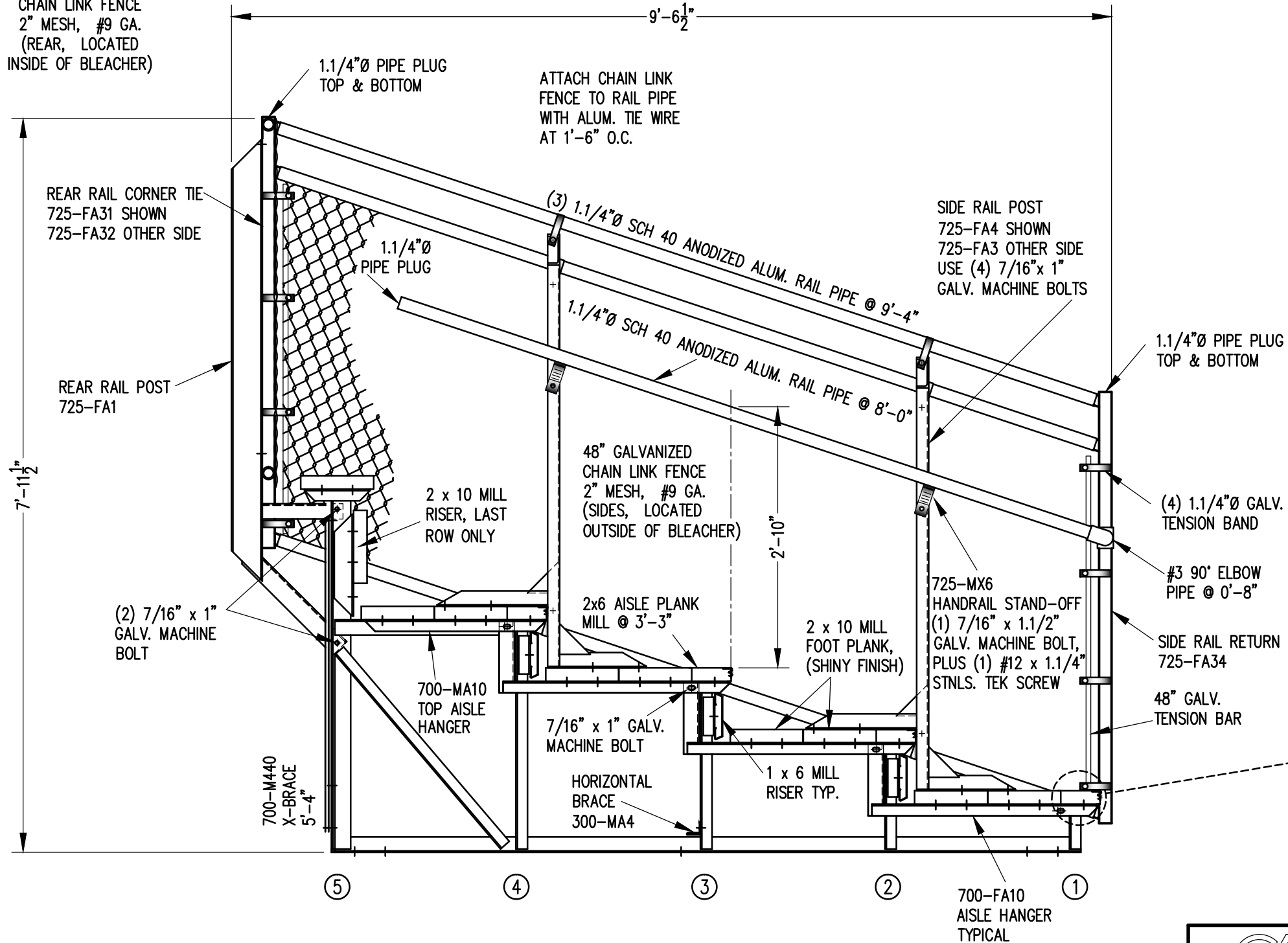
| | | | | | |
|----------------------------------------|-----------------|---------------------------------------------------------------------------------------------------------------------|--|-----------------------|------------------|
| | | Outdoor Aluminum <small>P.O. BOX 118 GENEVA, ALABAMA 36340 334-684-2296</small> | | | |
| | | | | SCALE AS NOTED | REVISIONS |
| DATE | 10/21/04 | REVISED SEAT PLAN | | WHW | 11/21/06 |
| DR'N | WHW CKD | ADDED 1x6 RISER HOLES | | CES | 6/8/10 |
| AP'VD | | UPDATED TO 700 SERIES STANDARDS | | GDK | 02/13 |
| TITLE | | | | | NO. |
| TSAA 5-15 SEATING/FRAMING PLAN W/AISLE | | | | | 884-E2063 |



VIEW 'AA'
3/4" = 1'-0"

| | | | | | |
|---------------------------------------------------------------------------------------|----------|----------------------------------------------------------------------------------|--|-----------|----------|
|  | | Outdoor Aluminum P.O. BOX 118 GENEVA, ALABAMA 36340 334-684-2296 | | | |
| | | | | SCALE | AS NOTED |
| DATE | 10/01/04 | UPDATED REAR & SIDE RAIL POSTS | | WHW | 11/15/06 |
| DR'N | WHW CKD | UPDATED TO 700 SERIES STANDARDS | | GDK | 02/18/13 |
| AP'VD | | | | | |
| TITLE | | | | NO. | |
| SG 5 ROW VIEW DOUBLE FOOTBOARD | | | | 584-E2085 | |

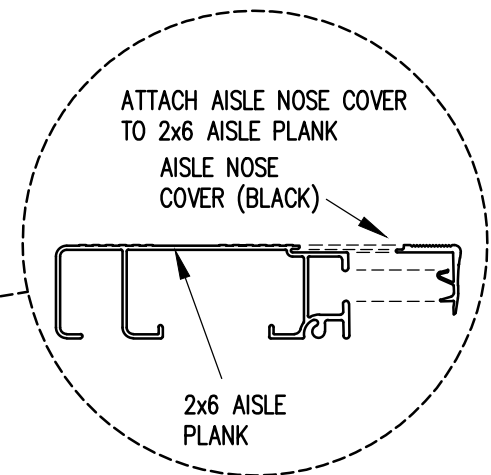
48" GALVANIZED
CHAIN LINK FENCE
2" MESH, #9 GA.
(REAR, LOCATED
INSIDE OF BLEACHER)



NOTE: ALL AISLE HANGERS - TWO PER
LOCATION REQUIRED, TYPICAL

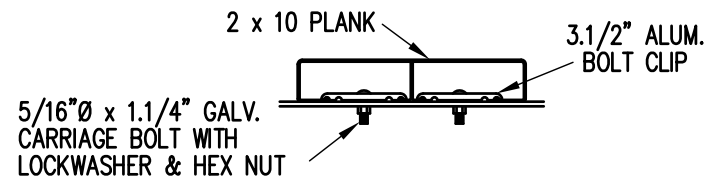
SECTION BB

3/4" = 1'-0"



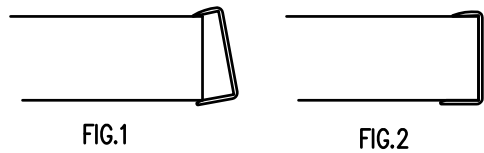
| REVISIONS | BY | DATE |
|---------------------------------|-----|---------|
| UPDATED TO 700 SERIES STANDARDS | GDK | 2/18/13 |
| | | |
| | | |

| | | | | |
|-------|-----------------------------|-------------------------------------------------------|------------------------------|-------------------------|
| | | P.O. BOX 118 GENEVA, ALABAMA 36340 334-684-2296 | | |
| | | SCALE | AS NOTED | REVISIONS |
| DATE | 10/01/04 | UPDATED REAR & SIDE RAIL POSTS | WHW | 11/15/06 |
| DR'N | WHW | CKD | CHANGED 2.1/4" PIPE TO 0'-8" | CES 7/17/07 |
| AP'VD | | CHANGED REAR X-BRACE LENGTH ANNOTATION | CES | 5/21/10 |
| TITLE | SGA 5 ROW END AISLE SECTION | | | NO. 584-E2086 |



BOLT CLIP DETAIL

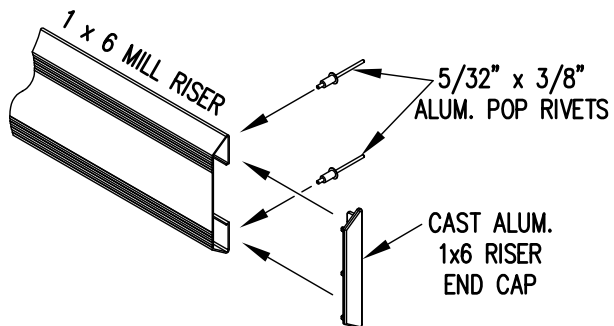
1.1/2" = 1'-0"



- 1) LOCATE THE CHANNEL END CAP AS SHOWN IN FIG. 1.
- 2) TAP END CAP INTO PLACE WITH RUBBER Mallet OR SOFT WOOD. FIG.2
- 3) DRILL 5/32" HOLES THROUGH THE BOTTOM FLANGE AND THE BOTTOM OUTSIDE PLANK FLANGES OF EACH PLANK. INSTALL 5/32" POP RIVETS.

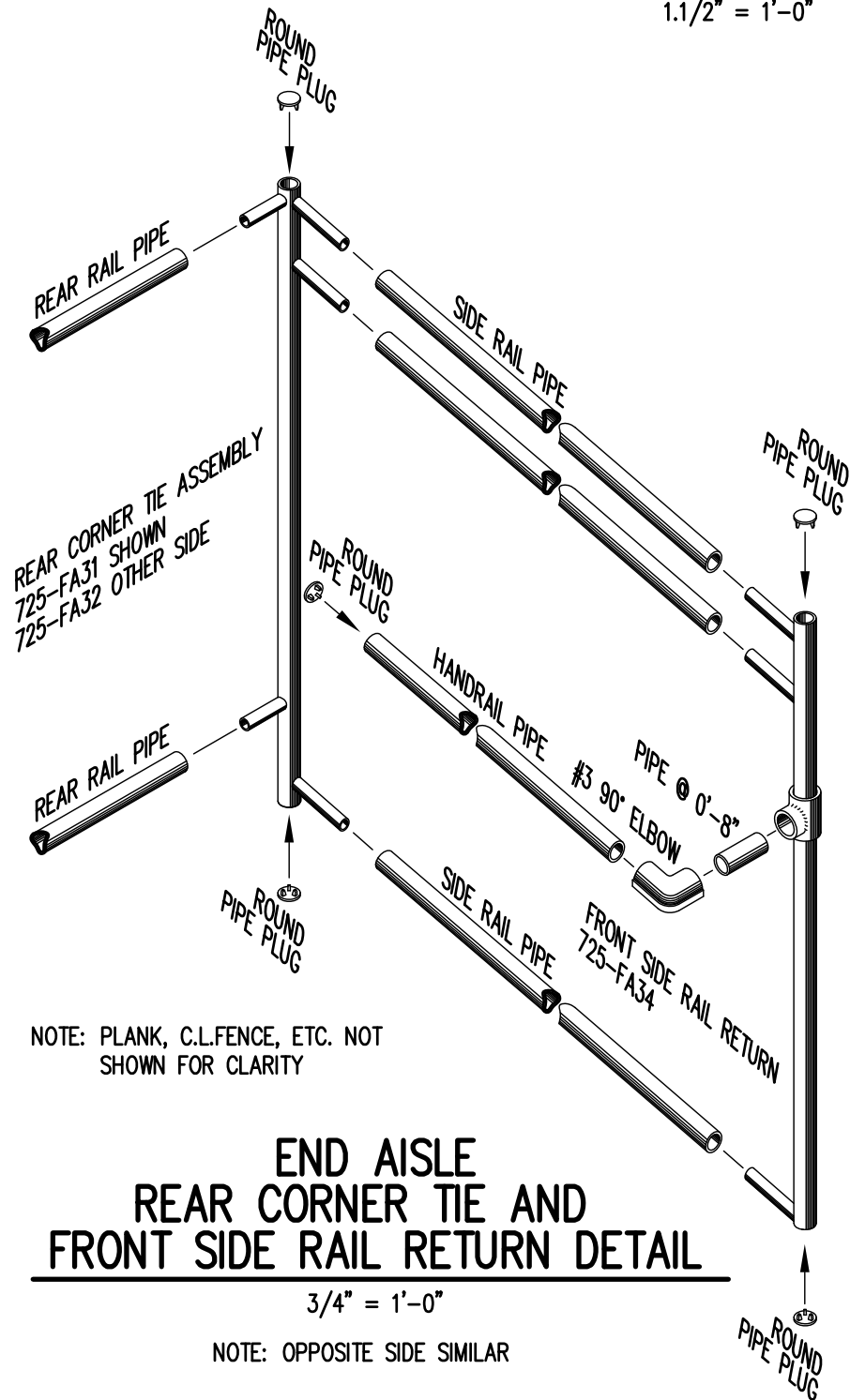
END CAP DETAIL

N.T.S.



1 x 6 RISER END CAP

N.T.S.

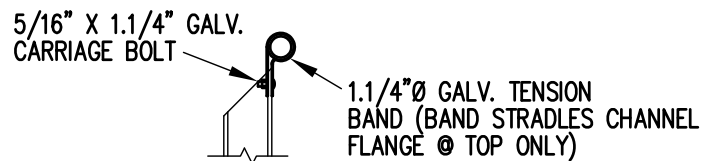


NOTE: PLANK, C.L.FENCE, ETC. NOT SHOWN FOR CLARITY

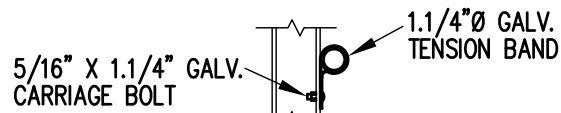
END AISLE REAR CORNER TIE AND FRONT SIDE RAIL RETURN DETAIL

3/4" = 1'-0"

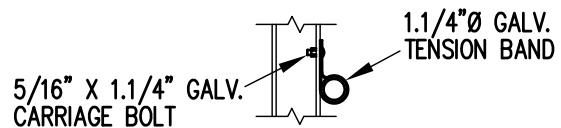
NOTE: OPPOSITE SIDE SIMILAR



TOP RAIL

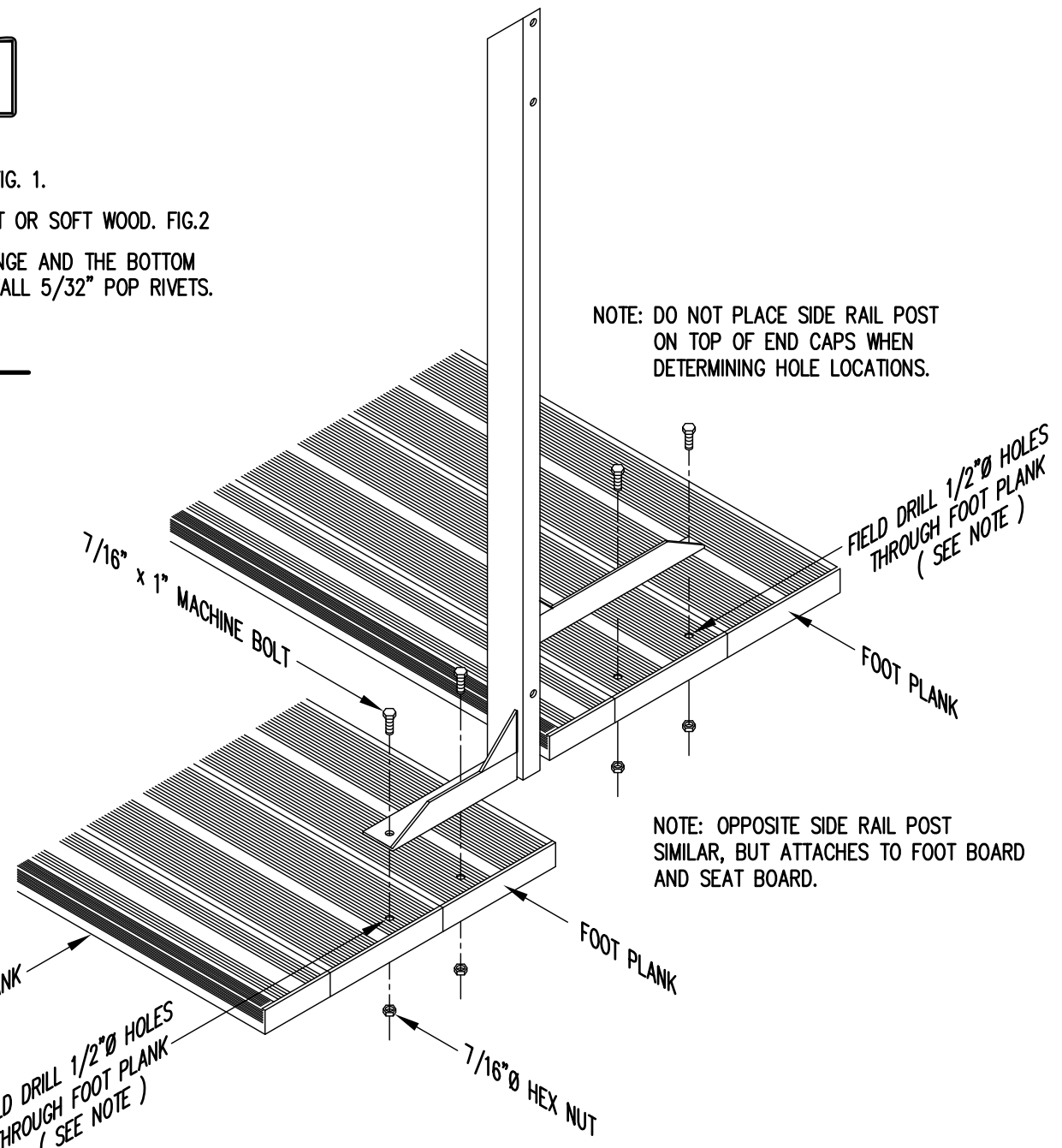


2ND RAIL



BOTTOM RAIL

RAIL PIPE ATTACHMENT



NOTE: DO NOT PLACE SIDE RAIL POST ON TOP OF END CAPS WHEN DETERMINING HOLE LOCATIONS.

NOTE: OPPOSITE SIDE RAIL POST SIMILAR, BUT ATTACHES TO FOOT BOARD AND SEAT BOARD.

TYP. SIDE RAIL POST ATTACHMENT AT END AISLE

1" = 1'-0"

| | | | | | |
|------------------------------|---------|-------------------------------------------------------|-----------|-----------|------|
| | | P.O. BOX 118 GENEVA, ALABAMA 36340 334-684-2296 | | | |
| | | SCALE AS NOTED | REVISIONS | BY | DATE |
| DATE | 11/2/11 | | | | |
| DR'N | CDK | CKD | | | |
| AP'VD | | | | | |
| TITLE | | | | NO. | |
| TYPICAL DETAILS W/ END AISLE | | | | 584-E2000 | |