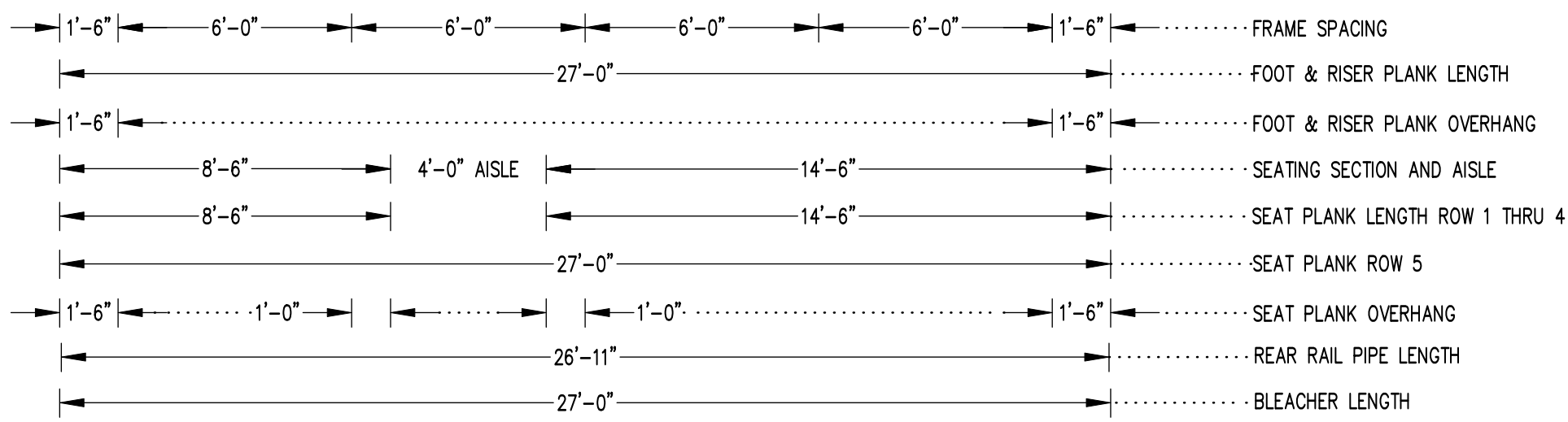
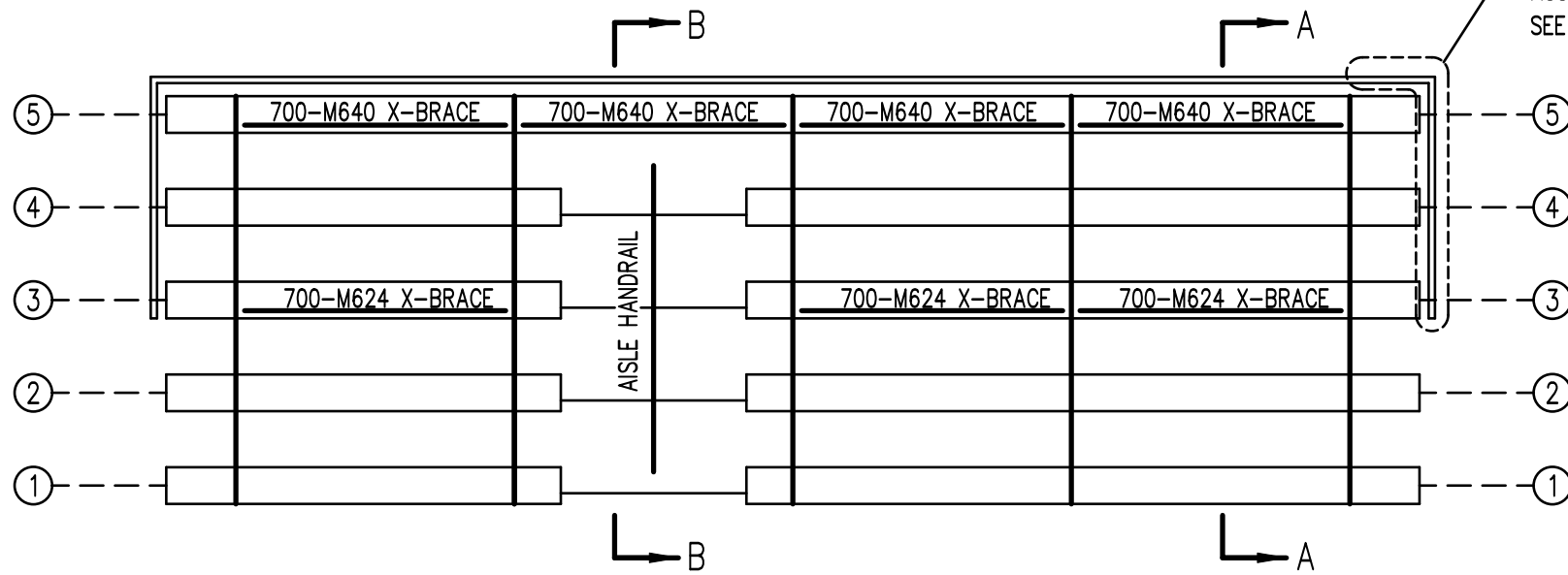


**X-BRACE DETAIL**

N.T.S.

- 7/16" X 1" GALV. MACH. BOLT
- △ 7/16" X 1.1/2" GALV. MACH. BOLT

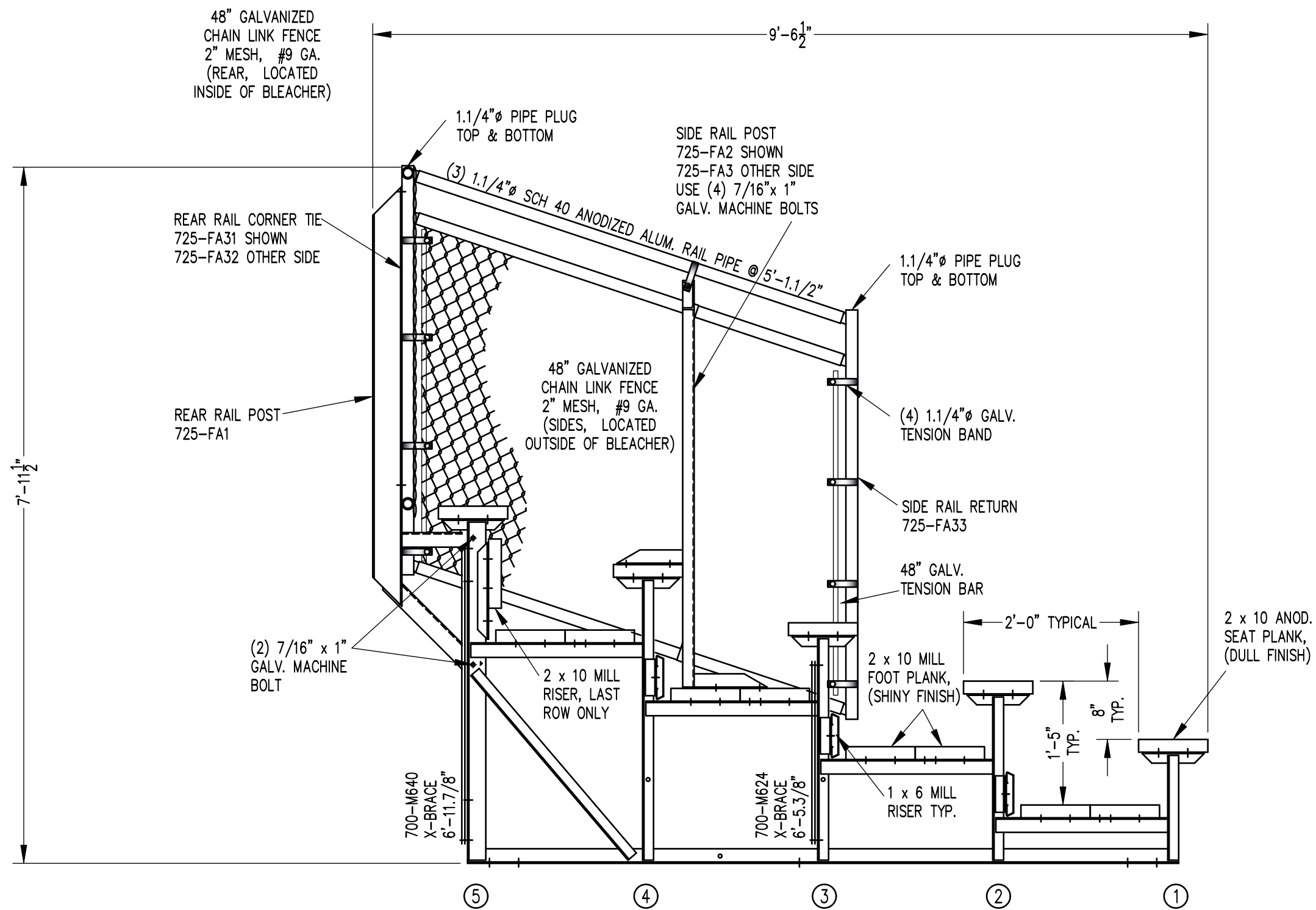
SEE REAR CORNER TIE  
ASSEMBLY DETAIL  
SEE DWG. 584-E1990



**SEATING & FRAMING PLAN**


1/4" = 1'-0"  
74 NET SEAT @ 18" PER SEAT

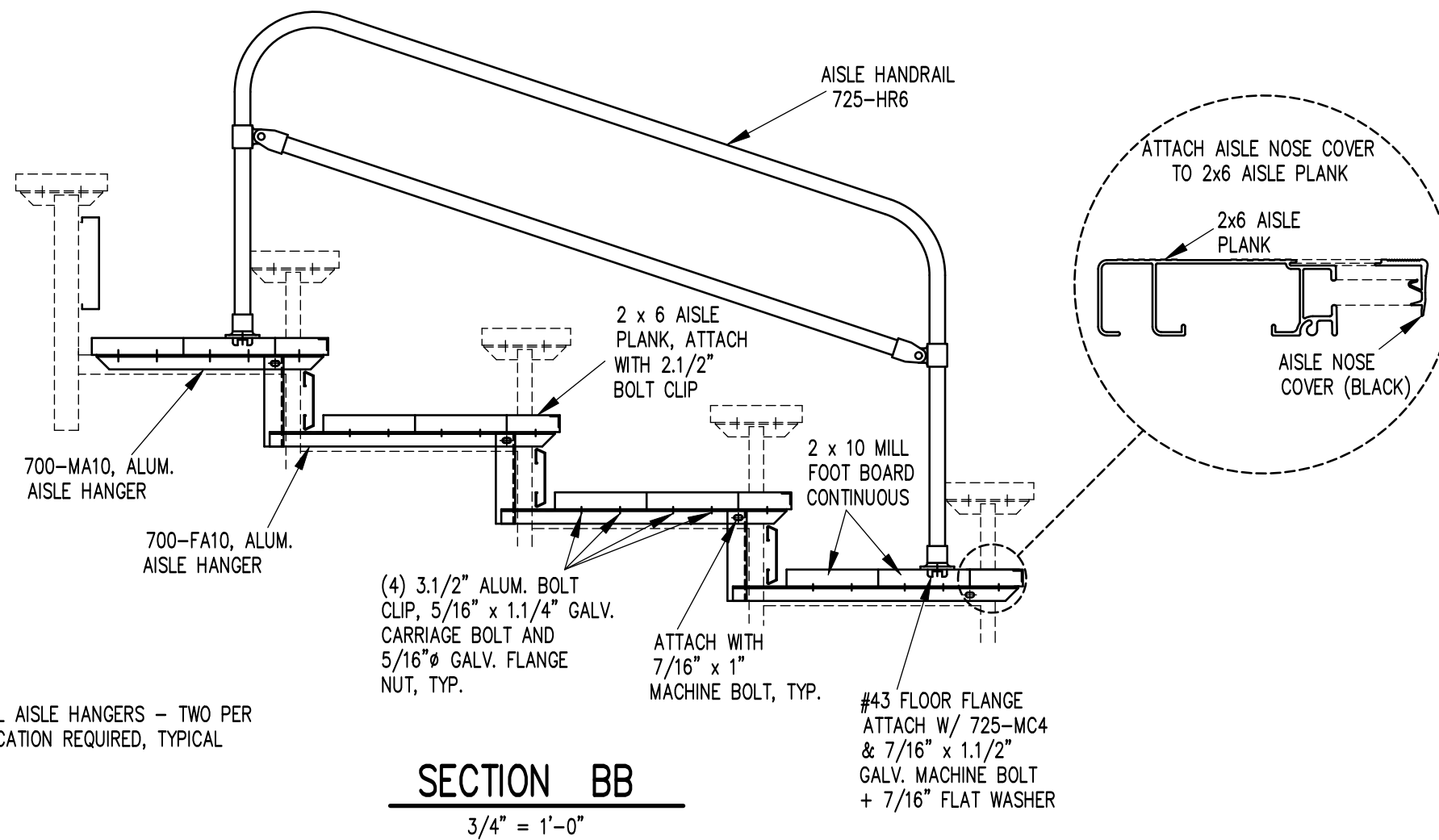
		P.O. BOX 118 GENEVA, ALABAMA 36340 334-684-2296					
		SCALE	AS NOTED	REVISIONS		BY	DATE
DATE	11/30/00	SIDE GUARDRAIL TO OUTSIDE		WHW	03/02		
DR'N	SS	CKD	UPDATED TO 700 SERIES STANDARDS		GDK	02/13	
AP'VD							
TITLE						NO.	
SGA 5-27 SEATING/FRAMING PLAN W/AISLE						584-E2073	




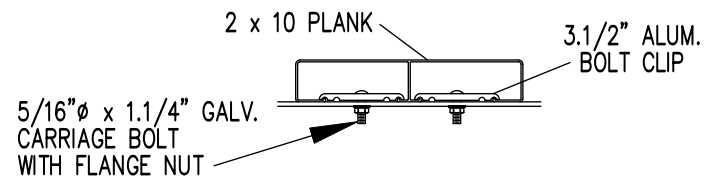
**SECTION AA**  
3/4" = 1'-0"

REVISIONS	BY	DATE
UPDATED TO 700 SERIES STANDARDS	GDK	2/18/13

		<b>Outdoor Aluminum</b> P.O. BOX 118 GENEVA, ALABAMA 36340 334-684-2296					
				SCALE	AS NOTED		
DATE	9/27/00	REVISIONS	X-BRACE FROM BLUE TO DARK BLUE	BY	CHM	DATE	03/97
DR'N	SS	CKD	SIDE GUARDRAIL TO OUTSIDE	BY	WHW	DATE	03/02
AP'VD			FOOTBOARD SUPPORT, FA17R2, FA22R1	BY	RS	DATE	11/06
TITLE							NO.
SG 5 ROW SECTION DOUBLE FOOTBOARD							<b>584-E2083</b>

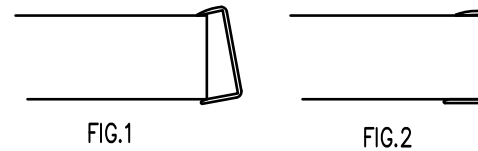


		<b>Outdoor Aluminum</b>		P.O. BOX 118 GENEVA, ALABAMA 36340 334-684-2296	
				SCALE	3/4"=1'-0"
DATE	9/27/00	AISLE NOSE COVER		WHW	03/02
DR'N	SS CKD	UPDATED TO 700 SERIES STANDARDS		GDK	02/13
AP'VD		ADJUSTED FOR FLANGE NUTS		GDK	5/24
TITLE					NO.
5 ROW AISLE SECTION					<b>584-E1995</b>



**BOLT CLIP DETAIL**

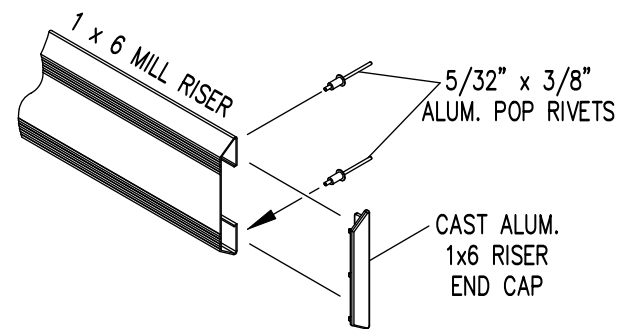
1.1/2" = 1'-0"



- 1) LOCATE THE CHANNEL END CAP AS SHOWN IN FIG. 1.
- 2) TAP END CAP INTO PLACE WITH RUBBER Mallet OR SOFT WOOD. FIG.2
- 3) DRILL 5/32" HOLES THROUGH THE BOTTOM FLANGE AND THE BOTTOM OUTSIDE PLANK FLANGES OF EACH PLANK. INSTALL 5/32" POP RIVETS.

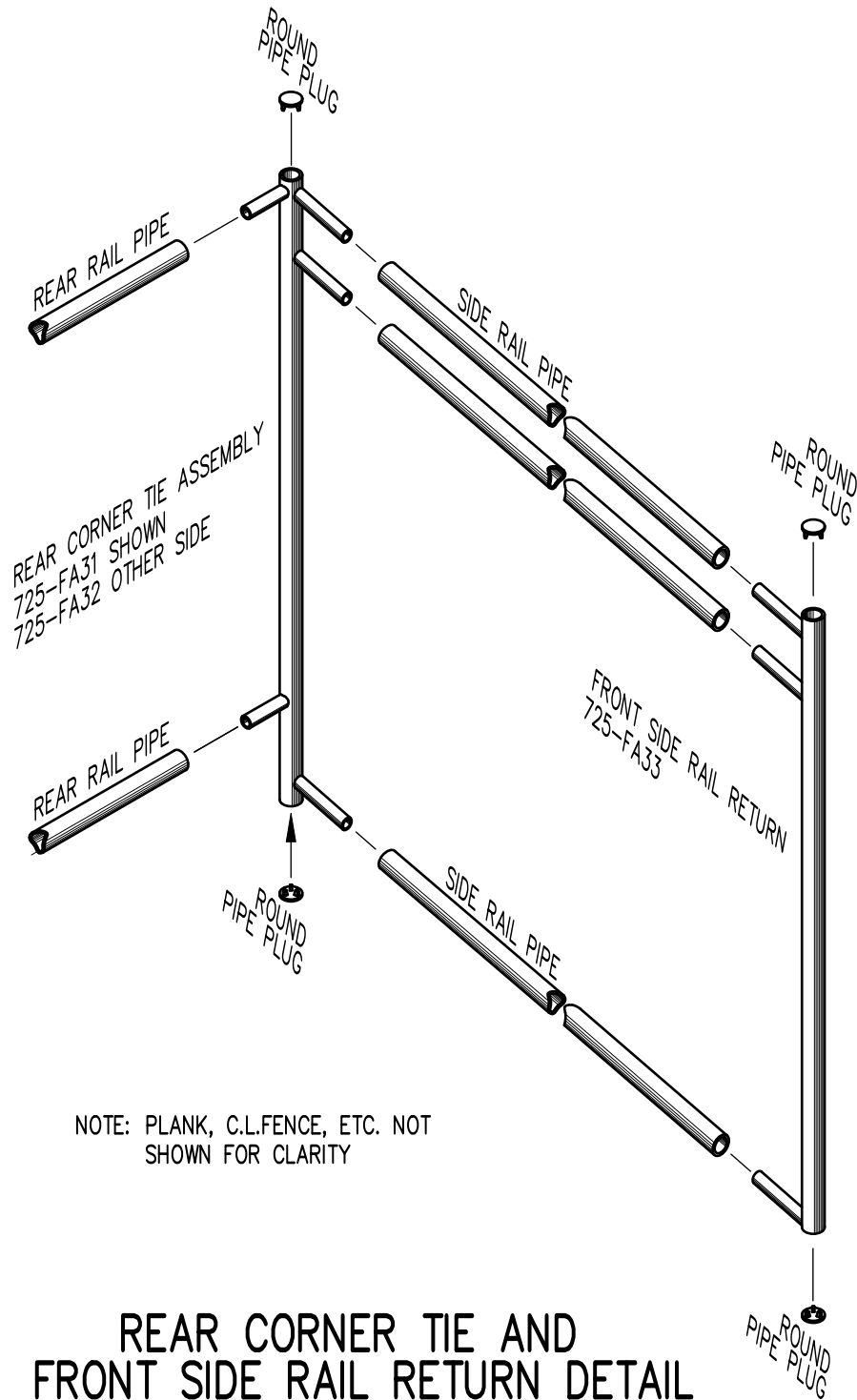
**END CAP DETAIL**

N.T.S.



**1 x 6 RISER END CAP**

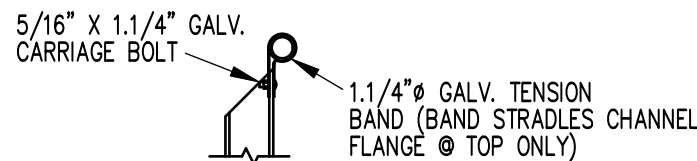
N.T.S.



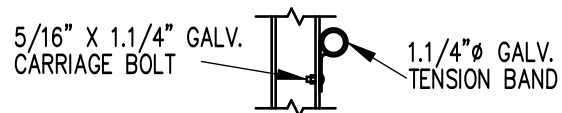
NOTE: PLANK, C.L.FENCE, ETC. NOT SHOWN FOR CLARITY

**REAR CORNER TIE AND FRONT SIDE RAIL RETURN DETAIL**

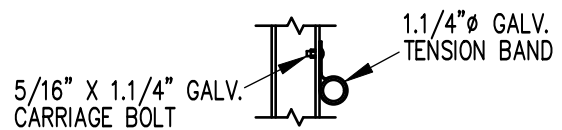
3/4" = 1'-0"



**TOP RAIL**

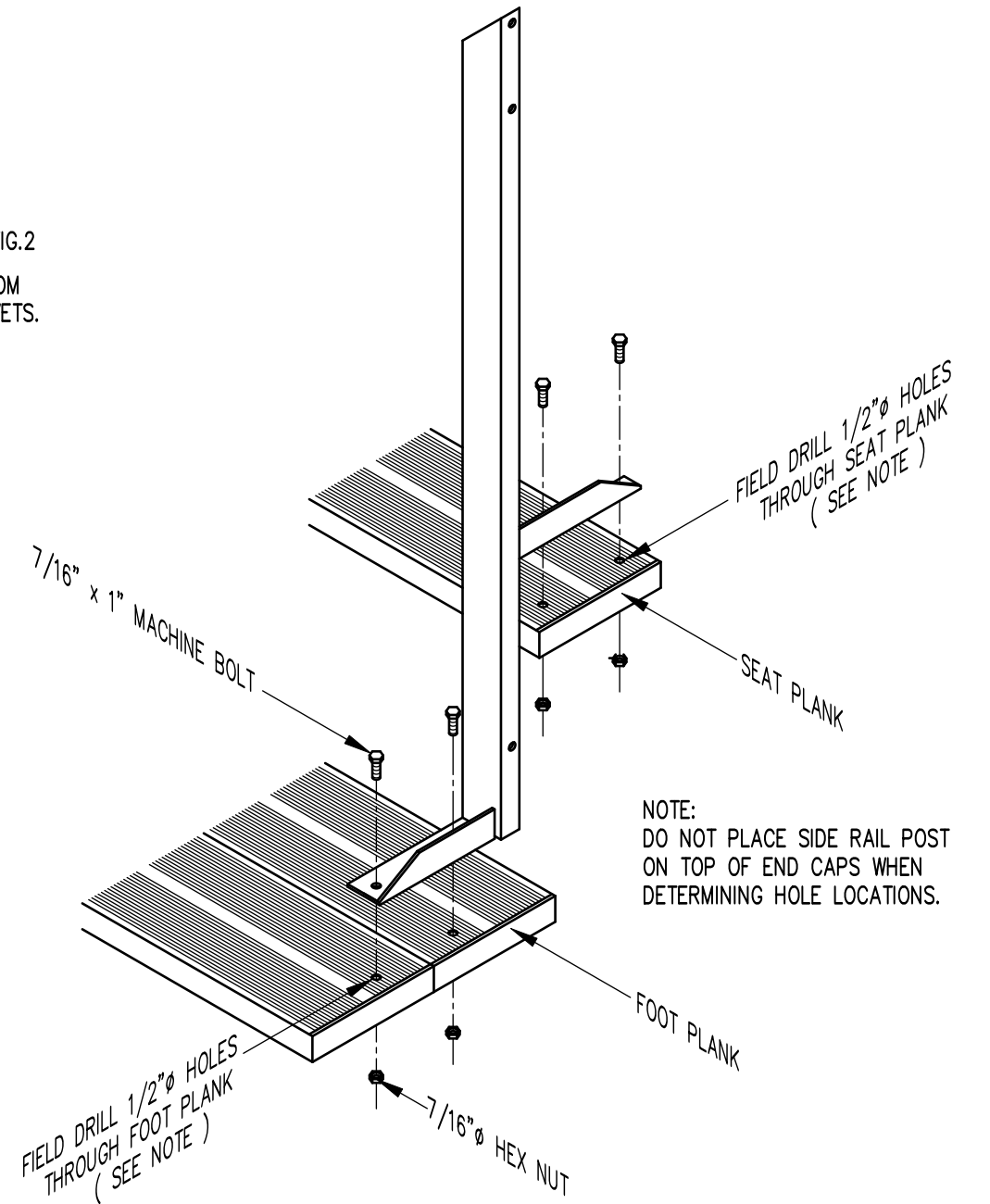


**MID RAIL**



**LOWER RAIL**

3/4" = 1'-0"



NOTE: DO NOT PLACE SIDE RAIL POST ON TOP OF END CAPS WHEN DETERMINING HOLE LOCATIONS.

**TYP. SIDE RAIL POST ATTACHMENT**

1" = 1'-0"

		<b>Outdoor Aluminum</b> P.O. BOX 118 GENEVA, ALABAMA 36340 334-684-2296					
				SCALE	AS NOTED	REVISIONS	
DATE	11/2/00	SIDE GUARDRAIL TO OUTSIDE		WHW	03/02		
DR'N	SS CKD	UPDATED TO 700 SERIES STANDARDS		GDK	12/13		
AP'VD		ADJUSTED FOR FLANGE NUTS		GDK	5/24		
TITLE				NO.			
TYPICAL DETAILS				584-E1990			