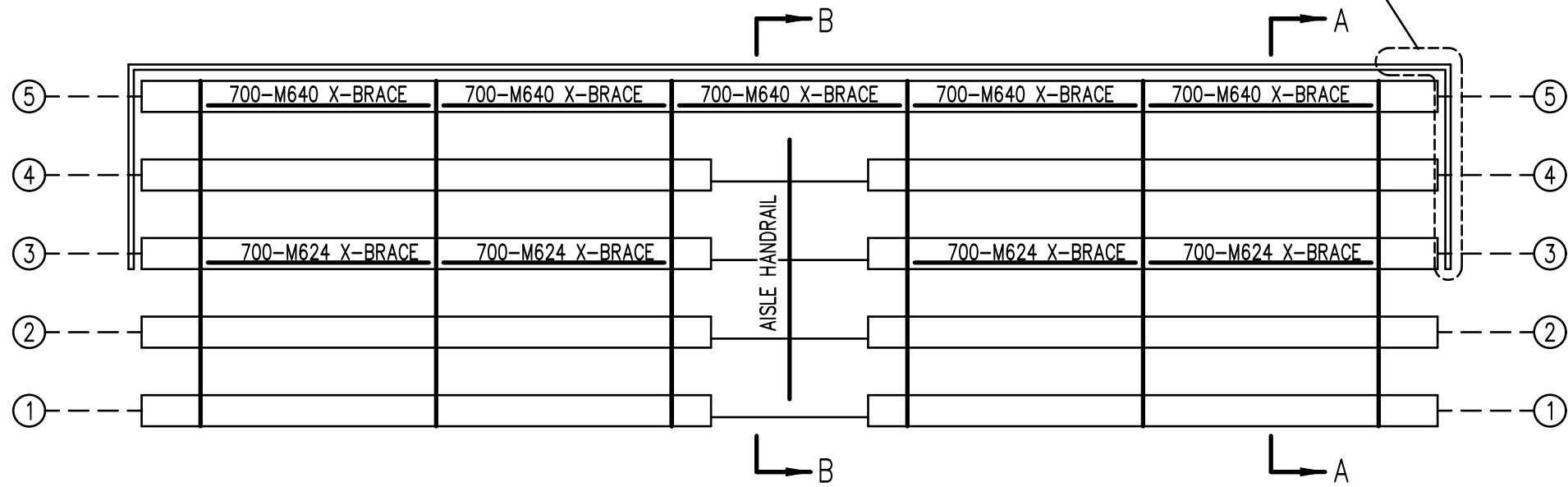
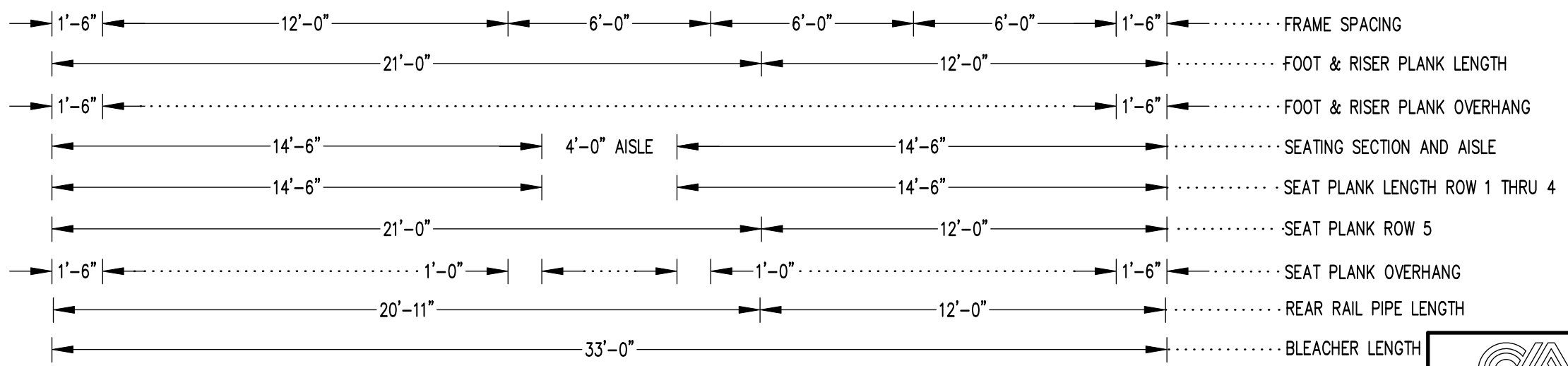


SEE REAR CORNER TIE  
ASSEMBLY DETAIL  
SEE DWG. 584-E1990



### X-BRACE DETAIL

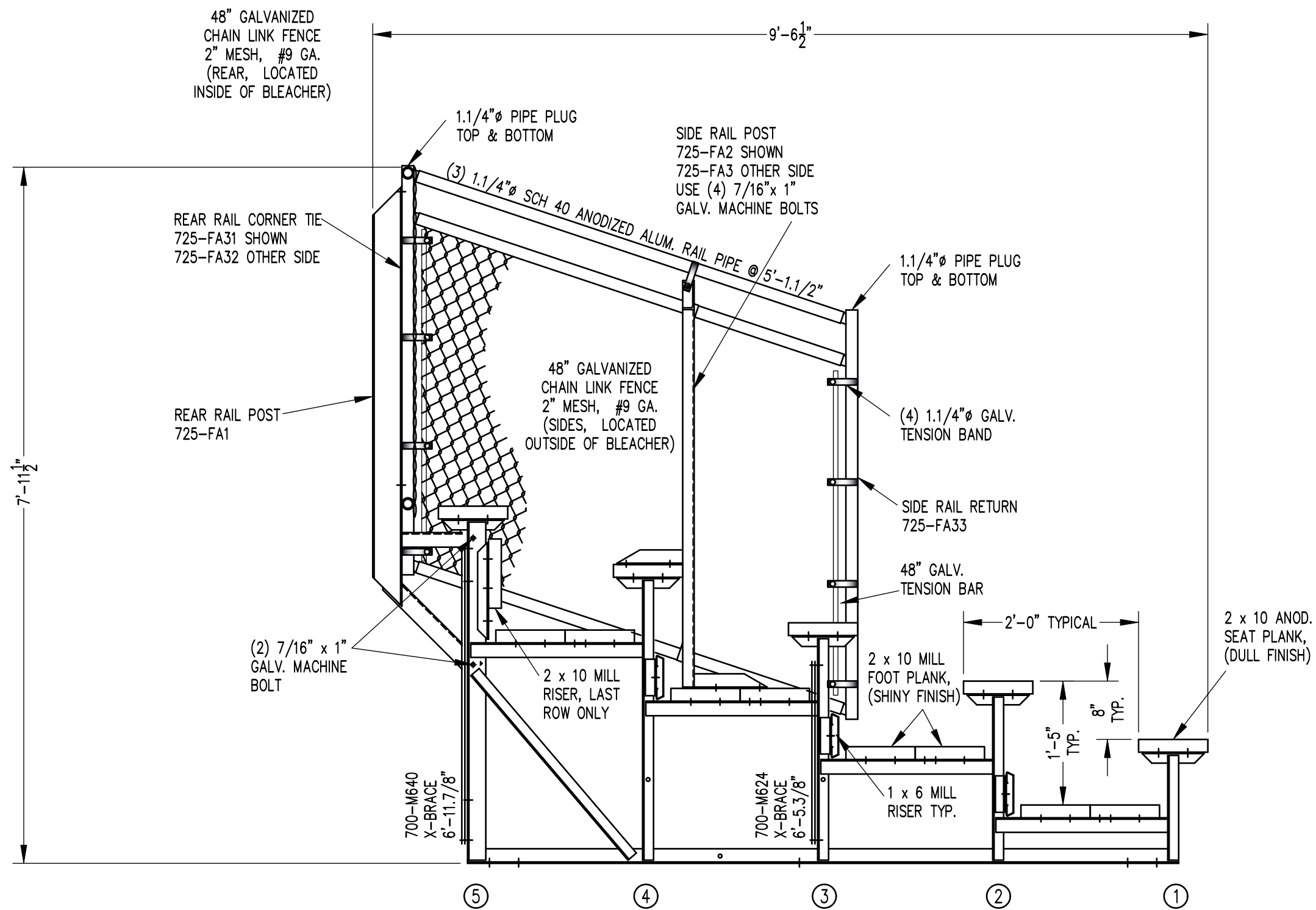
- N.T.S.
- 7/16" X 1" GALV. MACH. BOLT
  - △ 7/16" X 1.1/2" GALV. MACH. BOLT



### SEATING & FRAMING PLAN


1/4" = 1'-0"  
94 NET SEAT @ 18" PER SEAT

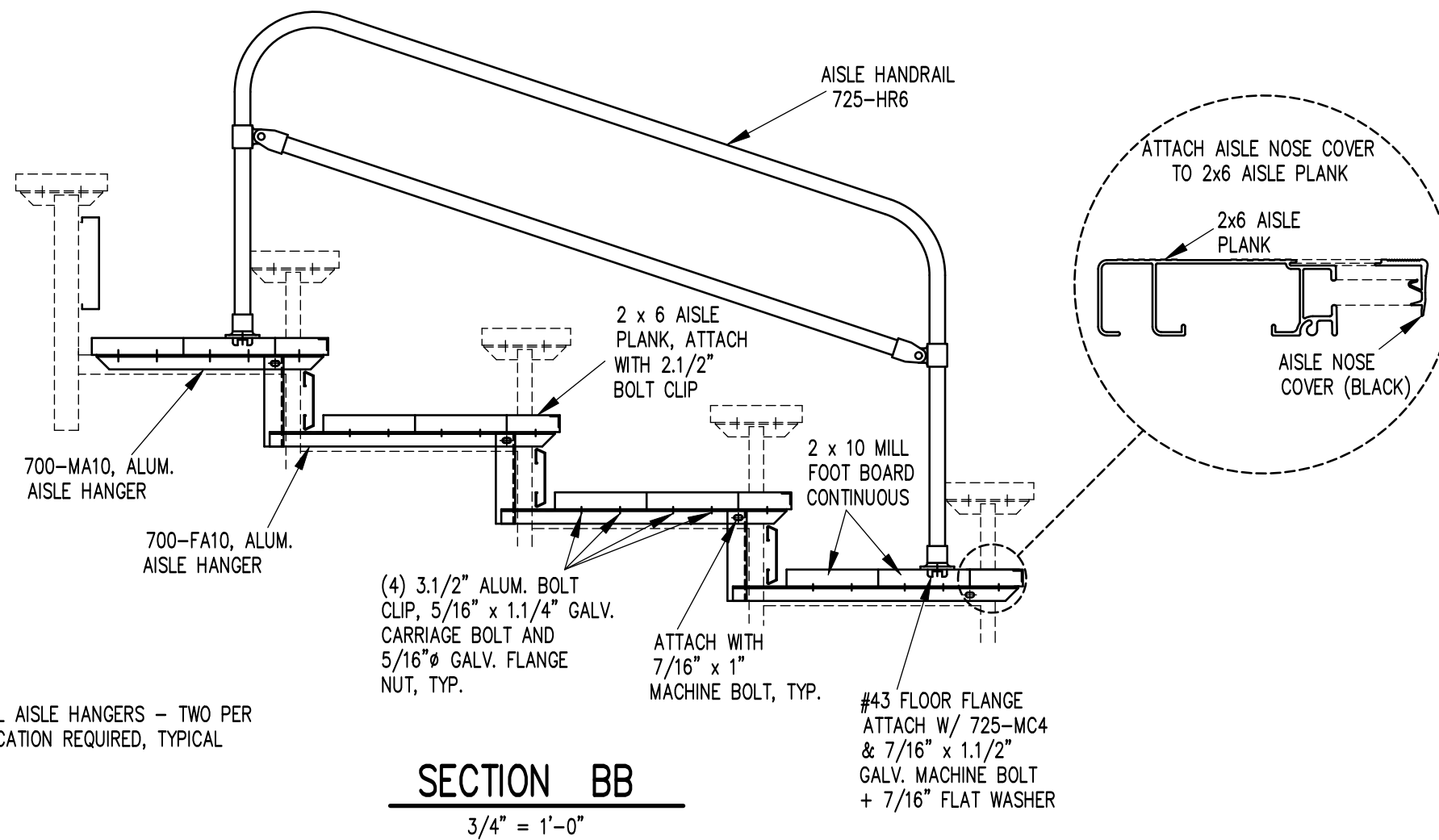
		P.O. BOX 118 GENEVA, ALABAMA 36340 334-684-2296					
		SCALE	AS NOTED	REVISIONS		BY	DATE
DATE	11/30/00	SIDE GUARDRAIL TO OUTSIDE		WHW	03/02		
DR'N	SS	CKD	UPDATED TO 700 SERIES STANDARDS		GDK	02/13	
AP'VD							
TITLE						NO.	
SGA 5-33 SEATING/FRAMING PLAN W/AISLE						584-E2078	




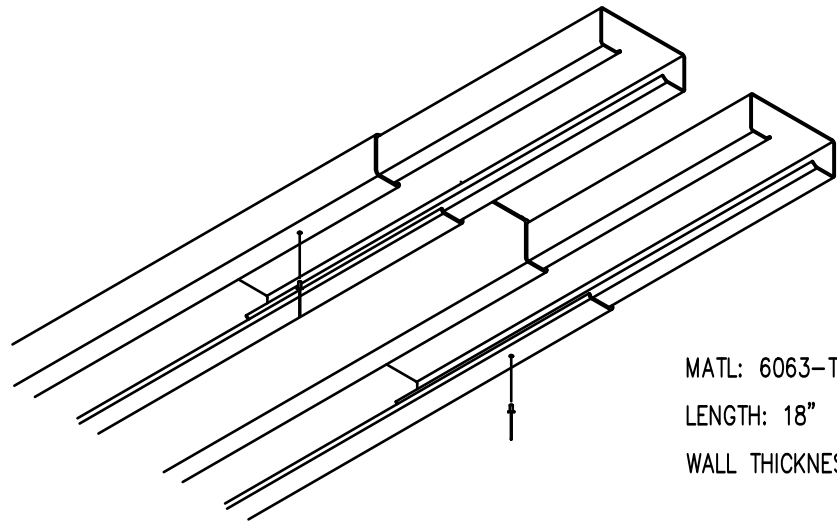
**SECTION AA**  
 $\frac{3}{4}'' = 1'-0''$

REVISIONS	BY	DATE
UPDATED TO 700 SERIES STANDARDS	GDK	2/18/13

		<b>Outdoor Aluminum</b> <small>P.O. BOX 118          GENEVA, ALABAMA 36340          334-684-2296</small>		
		SCALE	AS NOTED	REVISIONS
DATE	9/27/00	X-BRACE FROM BLUE TO DARK BLUE	CHM	03/97
DR'N	SS	SIDE GUARDRAIL TO OUTSIDE	WHW	03/02
AP'VD	CKD	FOOTBOARD SUPPORT, FA17R2, FA22R1	RS	11/06
TITLE				NO.
SG 5 ROW SECTION DOUBLE FOOTBOARD				<b>584-E2083</b>



		<b>Outdoor Aluminum</b>		P.O. BOX 118 GENEVA, ALABAMA 36340 334-684-2296	
		SCALE	3/4"=1'-0"	REVISIONS	BY
DATE	9/27/00	AISLE NOSE COVER		WHW	03/02
DR'N	SS CKD	UPDATED TO 700 SERIES STANDARDS		GDK	02/13
AP'VD		ADJUSTED FOR FLANGE NUTS		GDK	5/24
TITLE					NO.
5 ROW AISLE SECTION					<b>584-E1995</b>



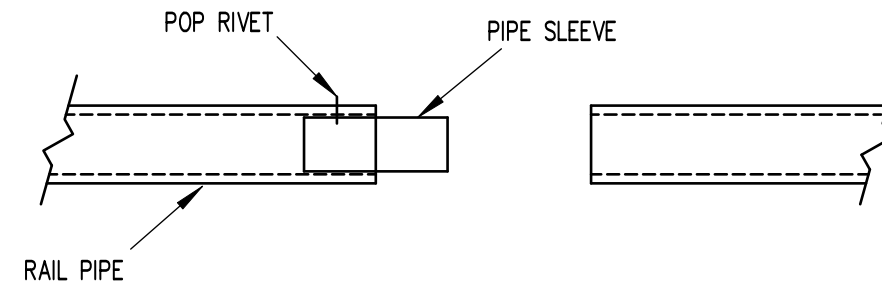
MATL: 6063-T6 ALUMN.  
 LENGTH: 18"  
 WALL THICKNESS: .062"

- 1) INSERT SLEEVES APPROXIMATELY HALFWAY INTO THE PLANK WITH THE ENDS STAGGERED ABOUT 1/2". FASTEN SLEEVE WITH (1) ALUMINUM POP RIVET.
- 2) SLIDE THE END OF THE ADJOINING PLANK OVER THE SLEEVES UNTIL THE TWO PLANKS ARE SNUG.

NOTE: SLEEVES SHOULD BE ATTACHED ON ONLY ONE END TO ALLOW FOR EXPANSION.

### PLANK SPLICE SLEEVE ASSEMBLY

(TYP. @ ALL PLANK SPLICES)




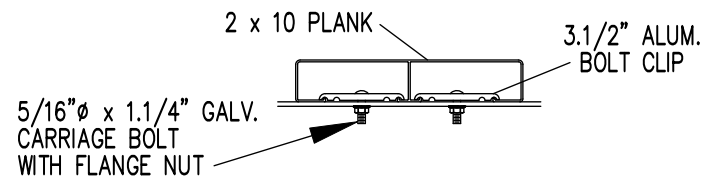
### PIPE SLEEVE ASSEMBLY

1.1/2" = 1' 0"

- 1) INSERT PIPE SLEEVE APPROXIMATELY HALFWAY INTO THE RAIL PIPE. FASTEN PIPE SLEEVE WITH (1) ALUMINUM POP RIVET (5/32" X 5/8")
- 2) SLIDE THE END OF THE ADJOINING RAILPIPE OVER THE PIPE SLEEVE UNTIL THE TWO RAILS ARE FLUSH.

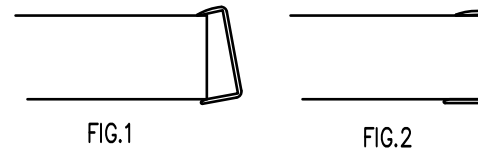
NOTE: PIPE SLEEVES SHOULD BE ATTACHED ON ONLY ONE END TO ALLOW FOR EXPANSION.

		<b>Outdoor Aluminum</b> P.O. BOX 118 GENEVA, ALABAMA 36340 334-684-2296			
				SCALE	AS NOTED
DATE	11/6/00	UPDATED TO 700 SERIES STANDARDS		GDK	02/13
DR'N	SS	CKD			
AP'VD					
TITLE					NO.
SPLICE SLEEVE ASSEMBLY					<b>584-E1994</b>



**BOLT CLIP DETAIL**

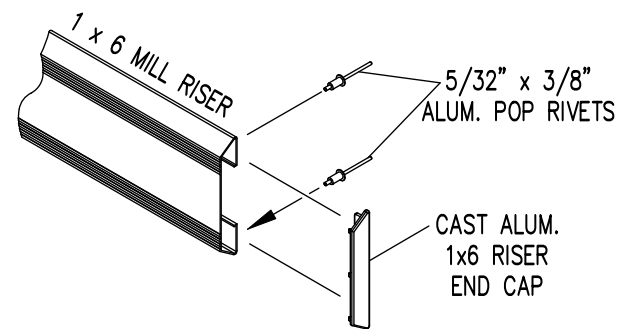
1.1/2" = 1'-0"



- 1) LOCATE THE CHANNEL END CAP AS SHOWN IN FIG. 1.
- 2) TAP END CAP INTO PLACE WITH RUBBER Mallet OR SOFT WOOD. FIG.2
- 3) DRILL 5/32" HOLES THROUGH THE BOTTOM FLANGE AND THE BOTTOM OUTSIDE PLANK FLANGES OF EACH PLANK. INSTALL 5/32" POP RIVETS.

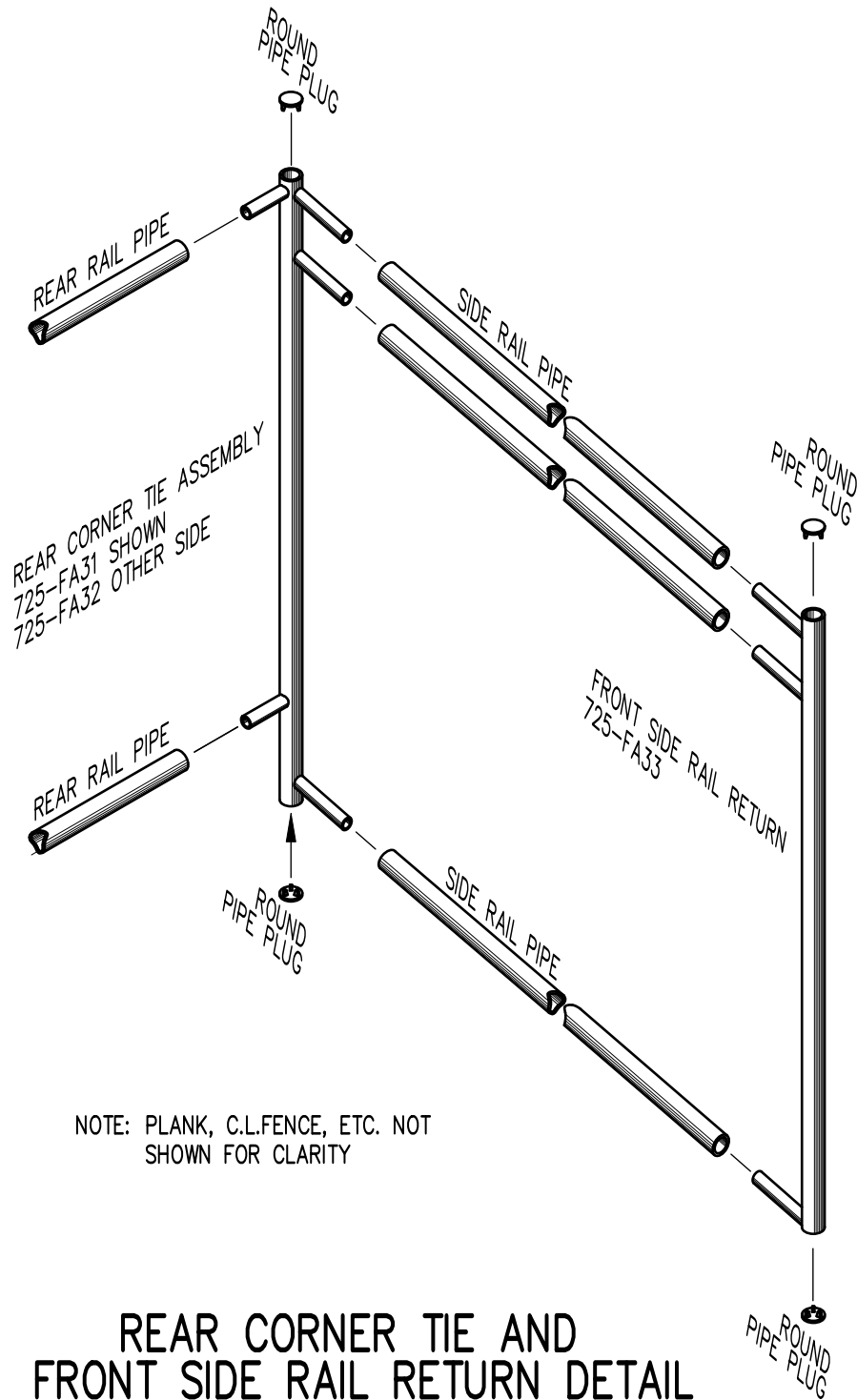
**END CAP DETAIL**

N.T.S.



**1 x 6 RISER END CAP**

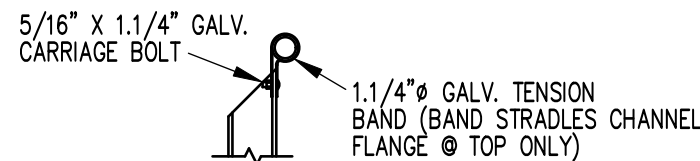
N.T.S.



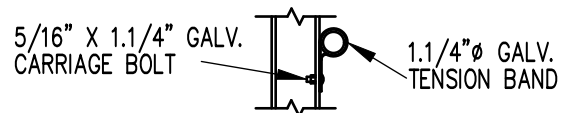
NOTE: PLANK, C.L.FENCE, ETC. NOT SHOWN FOR CLARITY

**REAR CORNER TIE AND FRONT SIDE RAIL RETURN DETAIL**

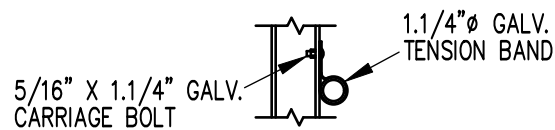
3/4" = 1'-0"



**TOP RAIL**

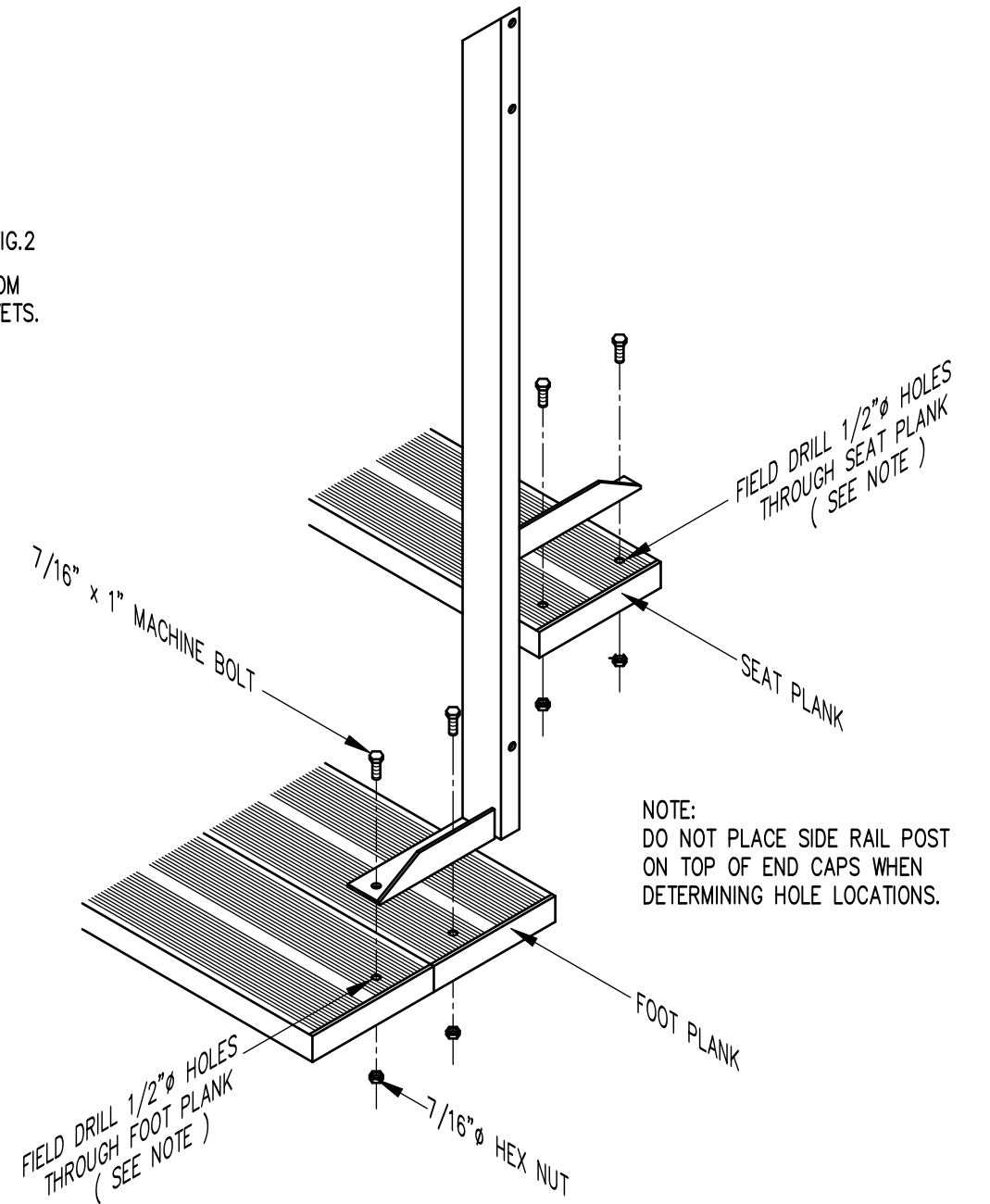


**MID RAIL**



**LOWER RAIL**

3/4" = 1'-0"



NOTE: DO NOT PLACE SIDE RAIL POST ON TOP OF END CAPS WHEN DETERMINING HOLE LOCATIONS.

**TYP. SIDE RAIL POST ATTACHMENT**

1" = 1'-0"

		<b>Outdoor Aluminum</b> P.O. BOX 118 GENEVA, ALABAMA 36340 334-684-2296			
				SCALE	AS NOTED
DATE	11/2/00	SIDE GUARDRAIL TO OUTSIDE		WHW	03/02
DR'N	SS CKD	UPDATED TO 700 SERIES STANDARDS		GDK	12/13
AP'VD		ADJUSTED FOR FLANGE NUTS		GDK	5/24
TITLE				NO.	
TYPICAL DETAILS				584-E1990	