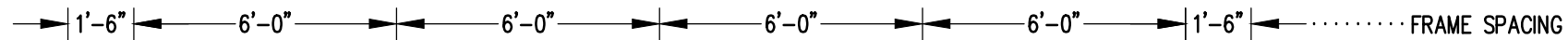
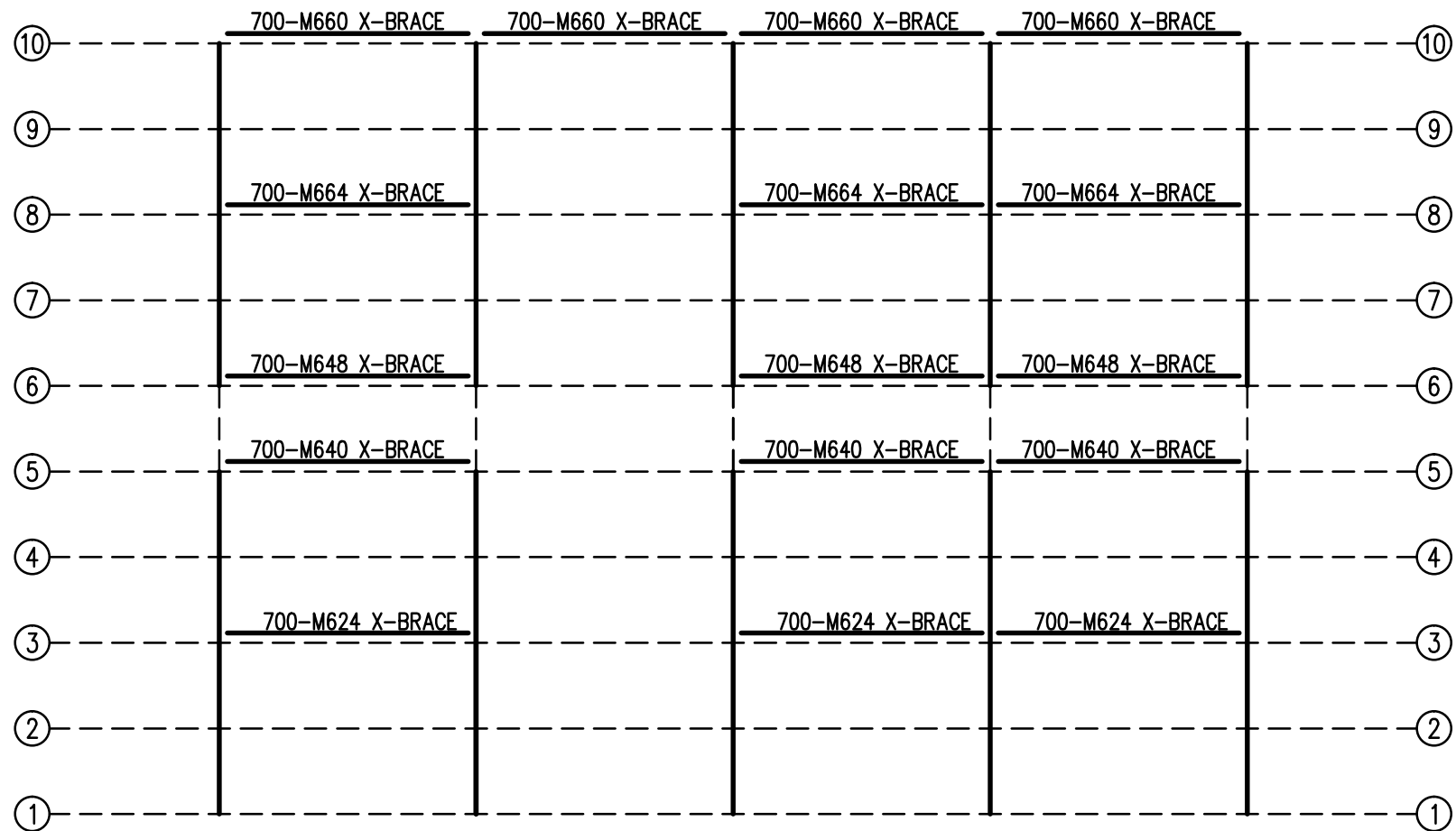


SEATING PLAN

1/4" = 1'-0"

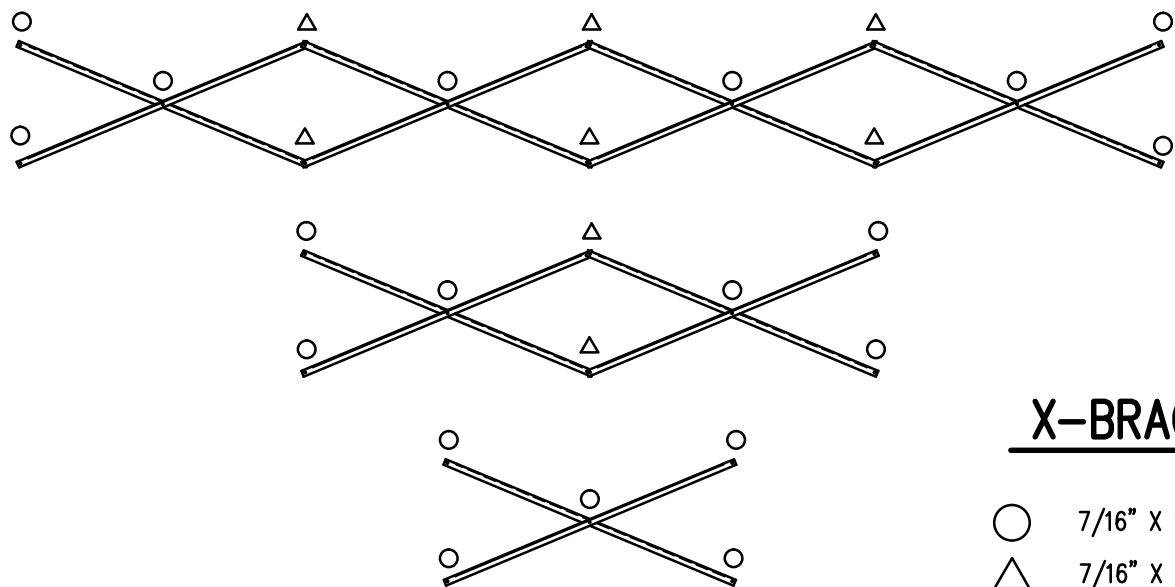
144 NET SEAT @ 18" PER SEAT

		P.O. BOX 118 GENEVA, ALABAMA 36340 334-684-2296		
		SCALE 1/4"=1'-0"	REVISIONS	BY
DATE 12/13/00	SIDE GUARDRAIL TO OUTSIDE		WHW	03/02
DR'N 5,5	CKD	UPDATED TO 700 SERIES STANDARDS	GDK	02/13
AP'VD				
TITLE			NO.	
SGA 10-27 SEATING PLAN W/AISLE			584-E2113	



FRAMING PLAN


1/4" = 1'-0"

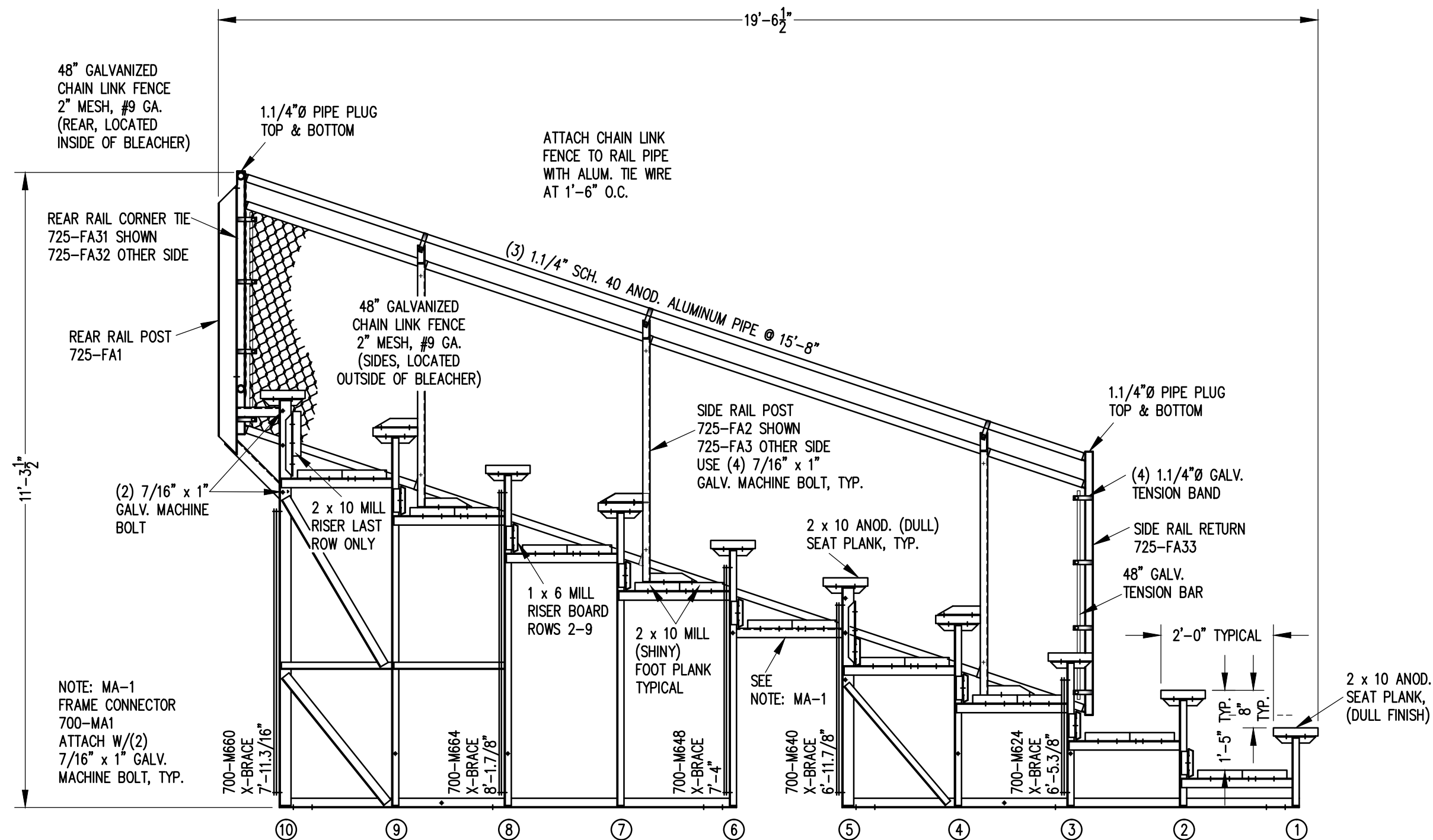


X-BRACE DETAIL

N.T.S.

- 7/16" X 1" GALV. MACH. BOLT
- △ 7/16" X 1.1/2" GALV. MACH. BOLT

		Outdoor Aluminum <small>P.O. BOX 118 GENEVA, ALABAMA 36340 334-684-2296</small>			
				SCALE AS NOTED	REVISIONS
DATE 11/29/00		UPDATED TO 700 SERIES STANDARDS		BY GDK	DATE 02/13
DR'N SS	CKD				
AP'VD					
TITLE				NO.	
SGA 10-27 FRAMING PLAN W/AISLE				584-E2153	



48" GALVANIZED CHAIN LINK FENCE 2" MESH, #9 GA. (REAR, LOCATED INSIDE OF BLEACHER)

1.1/4"Ø PIPE PLUG TOP & BOTTOM

ATTACH CHAIN LINK FENCE TO RAIL PIPE WITH ALUM. TIE WIRE AT 1'-6" O.C.

REAR RAIL CORNER TIE 725-FA31 SHOWN 725-FA32 OTHER SIDE

REAR RAIL POST 725-FA1

48" GALVANIZED CHAIN LINK FENCE 2" MESH, #9 GA. (SIDES, LOCATED OUTSIDE OF BLEACHER)

(3) 1.1/4" SCH. 40 ANOD. ALUMINUM PIPE @ 15'-8"

SIDE RAIL POST 725-FA2 SHOWN 725-FA3 OTHER SIDE USE (4) 7/16" x 1" GALV. MACHINE BOLT, TYP.

1.1/4"Ø PIPE PLUG TOP & BOTTOM

(4) 1.1/4"Ø GALV. TENSION BAND

11'-3 1/2"

(2) 7/16" x 1" GALV. MACHINE BOLT

2 x 10 MILL RISER LAST ROW ONLY

2 x 10 ANOD. (DULL) SEAT PLANK, TYP.

SIDE RAIL RETURN 725-FA33

48" GALV. TENSION BAR

NOTE: MA-1 FRAME CONNECTOR 700-MA1 ATTACH W/(2) 7/16" x 1" GALV. MACHINE BOLT, TYP.

700-M660 X-BRACE 7'-11.3/16"

700-M664 X-BRACE 8'-1.7/8"

700-M648 X-BRACE 7'-4"

700-M640 X-BRACE 6'-11.7/8"


700-M624 X-BRACE 6'-5.3/8"

2 x 10 ANOD. SEAT PLANK, (DULL FINISH)

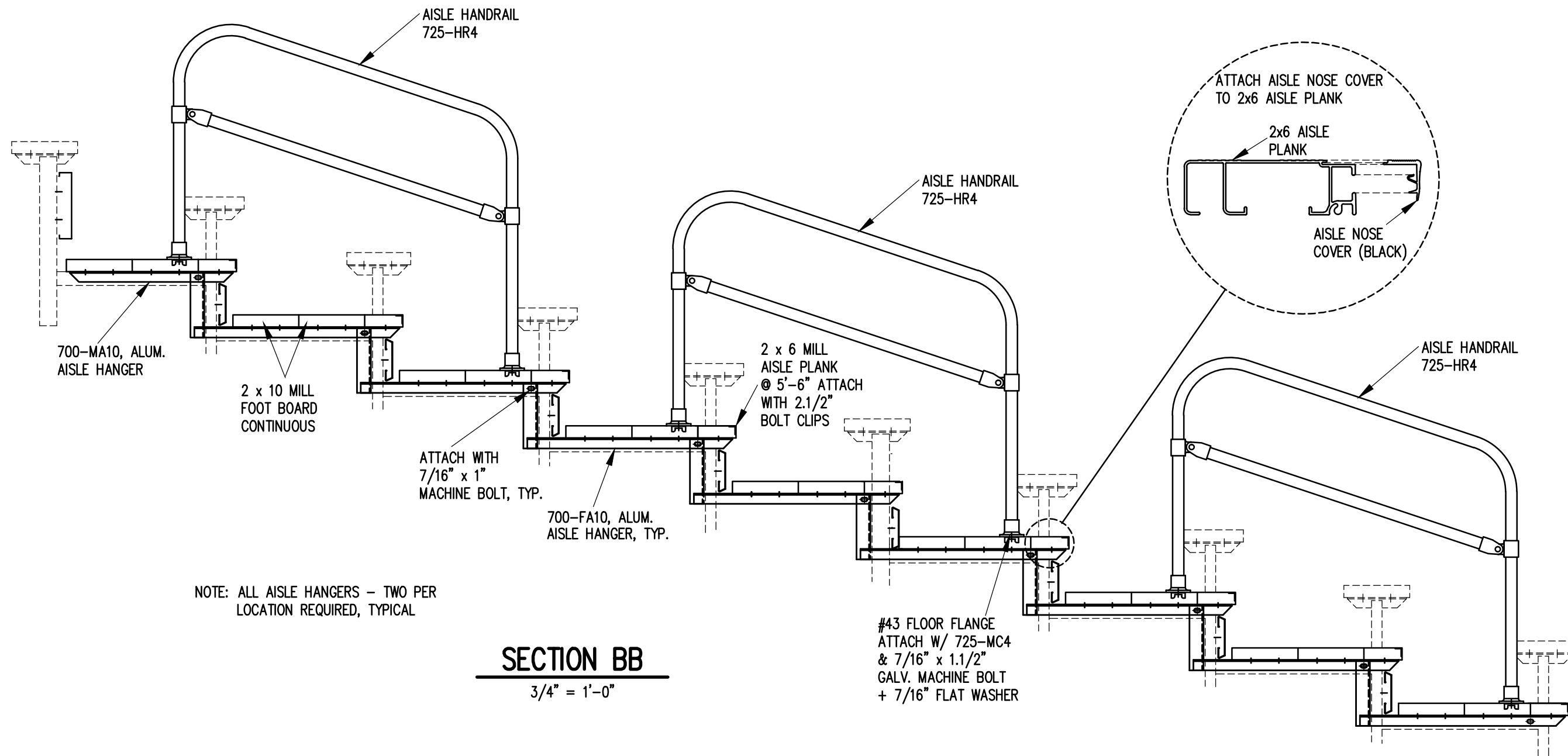
10 9 8 7 6 5 4 3 2 1

SECTION AA

1/2" = 1'-0"

		Outdoor Aluminum P.O. BOX 118 GENEVA, ALABAMA 36340 334-684-2296		
				SCALE 1/2"=1'-0"
DATE 11/30/00	X-BRACE FROM BLUE TO DARK BLUE		CHM	03/97
DR'N 5,5	CKD	SIDE GUARDRAIL TO OUTSIDE	WHW	03/02
AP'VD	FOOTBOARD SUPPORT,FA17R2,FA22R1,MA-8		RS	09/06
TITLE			NO.	
SG 10 ROW SECTION DOUBLE FOOTBOARD			584-E2123	


REVISIONS	BY	DATE
UPDATED TO 700 SERIES STANDARDS	GDK	2/18/13

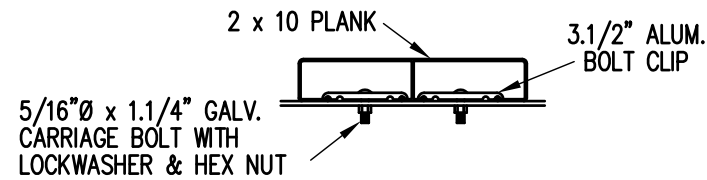


NOTE: ALL AISLE HANGERS - TWO PER LOCATION REQUIRED, TYPICAL

SECTION BB

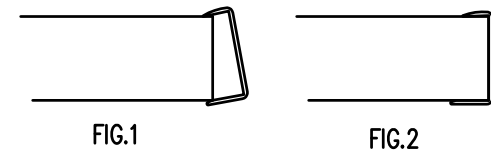
3/4" = 1'-0"

		Outdoor Aluminum P.O. BOX 118 GENEVA, ALABAMA 36340 334-684-2296			
				SCALE	REVISIONS
SCALE	3/4"=1'-0"	REVISIONS		BY	DATE
DATE	8/24/99	AISLE NOSE COVER		WHW	03/02
DR'N	S.S. CKD	UPDATED TO 700 SERIES STANDARDS		GDK	02/13
AP'VD					
TITLE				NO.	
10 ROW AISLE SECTION				584-E1996	



BOLT CLIP DETAIL

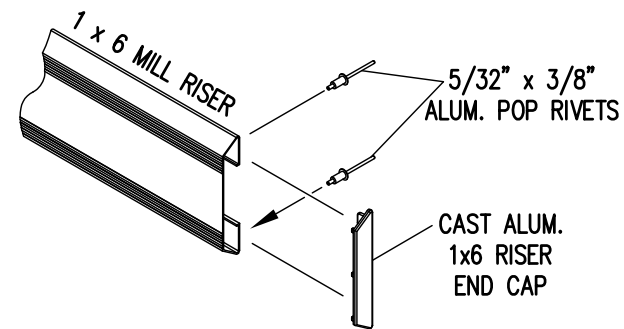
1.1/2" = 1'-0"



- 1) LOCATE THE CHANNEL END CAP AS SHOWN IN FIG. 1.
- 2) TAP END CAP INTO PLACE WITH RUBBER Mallet OR SOFT WOOD. FIG.2
- 3) DRILL 5/32" HOLES THROUGH THE BOTTOM FLANGE AND THE BOTTOM OUTSIDE PLANK FLANGES OF EACH PLANK. INSTALL 5/32" POP RIVETS.

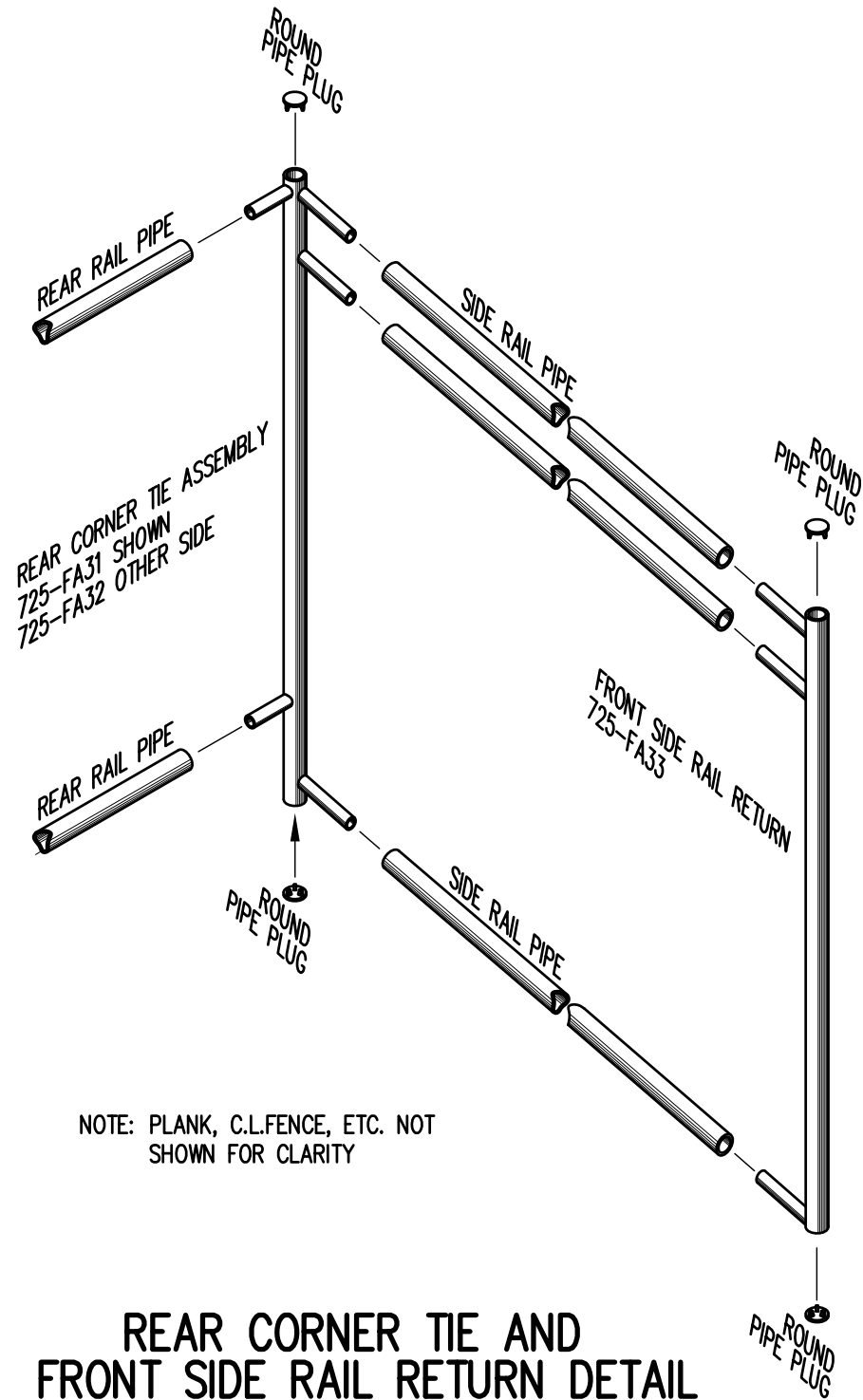
END CAP DETAIL

N.T.S.



1 x 6 RISER END CAP

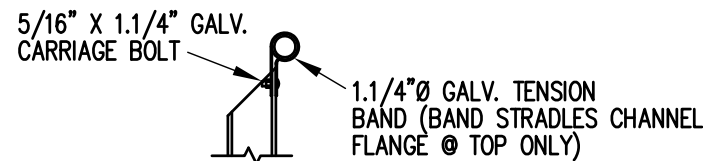
N.T.S.



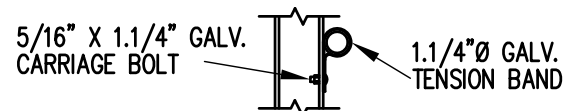
NOTE: PLANK, C.L.FENCE, ETC. NOT SHOWN FOR CLARITY

REAR CORNER TIE AND FRONT SIDE RAIL RETURN DETAIL

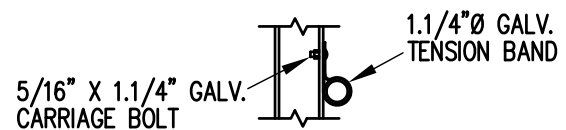
3/4" = 1'-0"



TOP RAIL

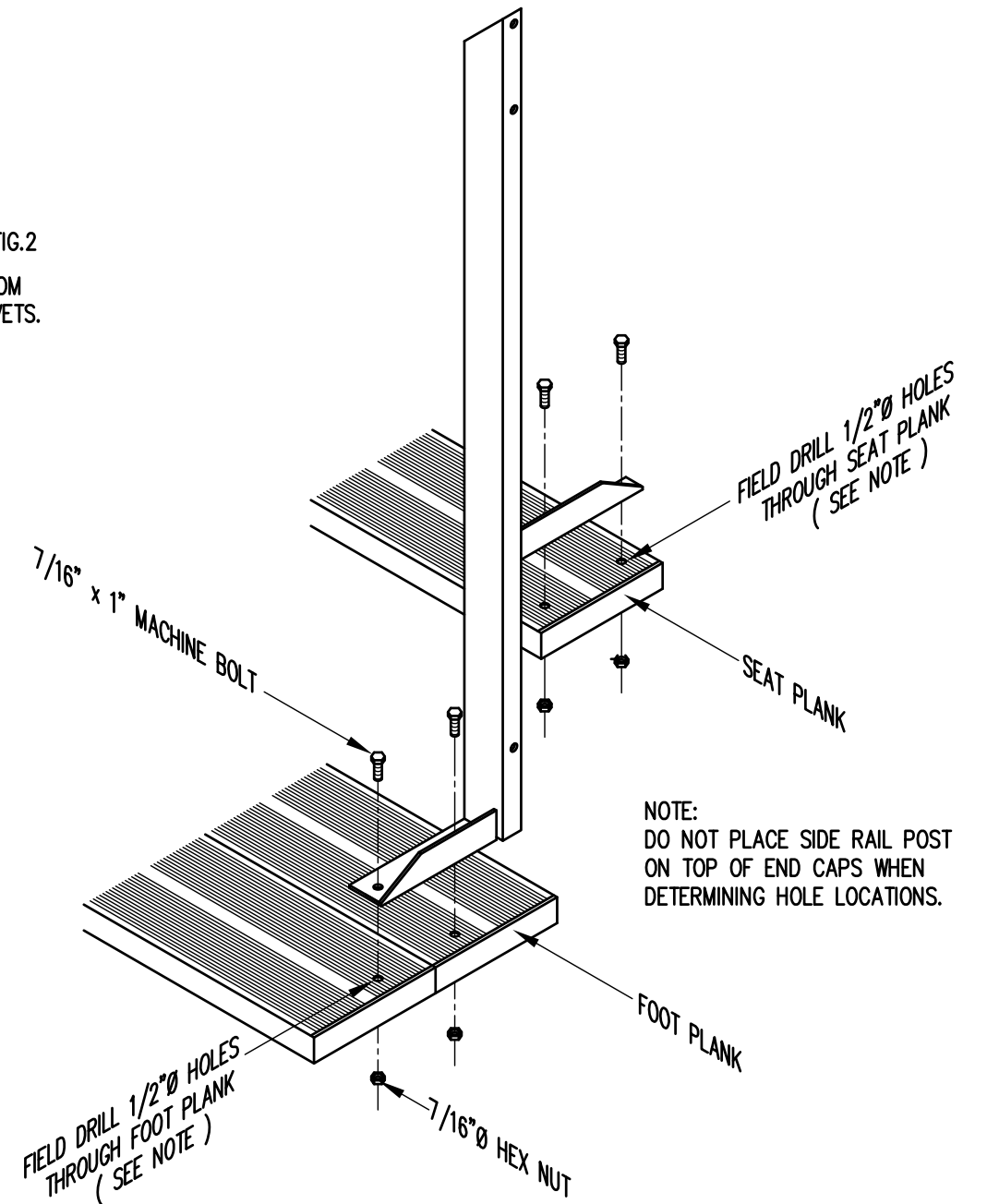


MID RAIL



LOWER RAIL

3/4" = 1'-0"



NOTE: DO NOT PLACE SIDE RAIL POST ON TOP OF END CAPS WHEN DETERMINING HOLE LOCATIONS.

TYP. SIDE RAIL POST ATTACHMENT

1" = 1'-0"

		P.O. BOX 118 GENEVA, ALABAMA 36340 334-684-2296			
		SCALE AS NOTED	REVISIONS	BY	DATE
DATE	11/2/00	SIDE GUARDRAIL TO OUTSIDE		WHW	03/02
DR'N	SS CKD	UPDATED TO 700 SERIES STANDARDS		GDK	02/13
AP'VD					
TITLE				NO.	
TYPICAL DETAILS				584-E1990	