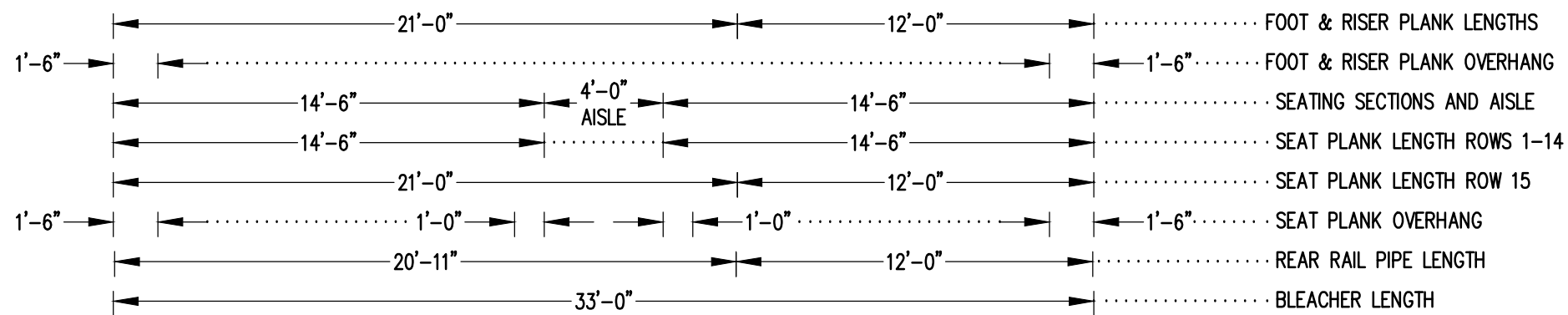
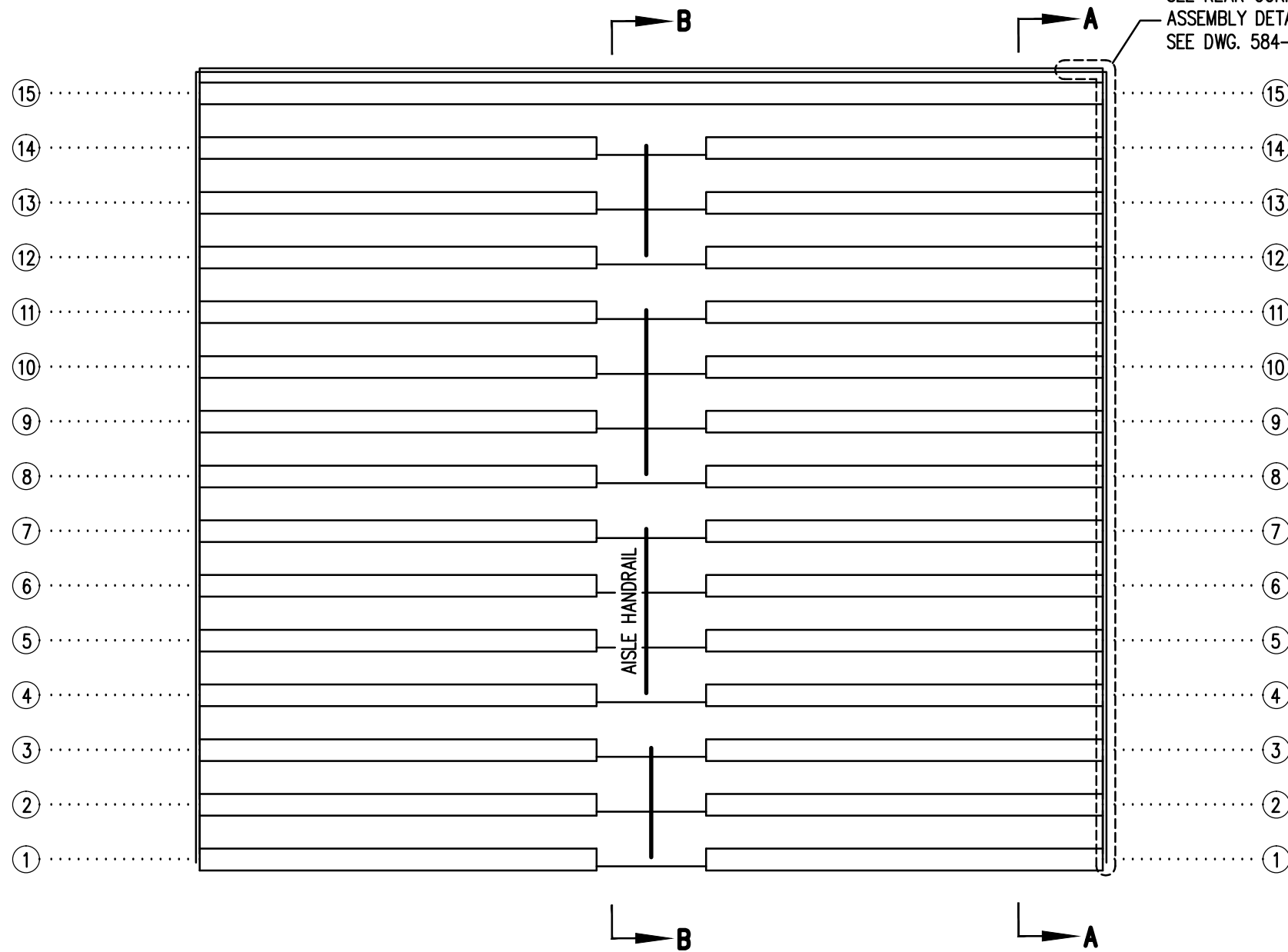



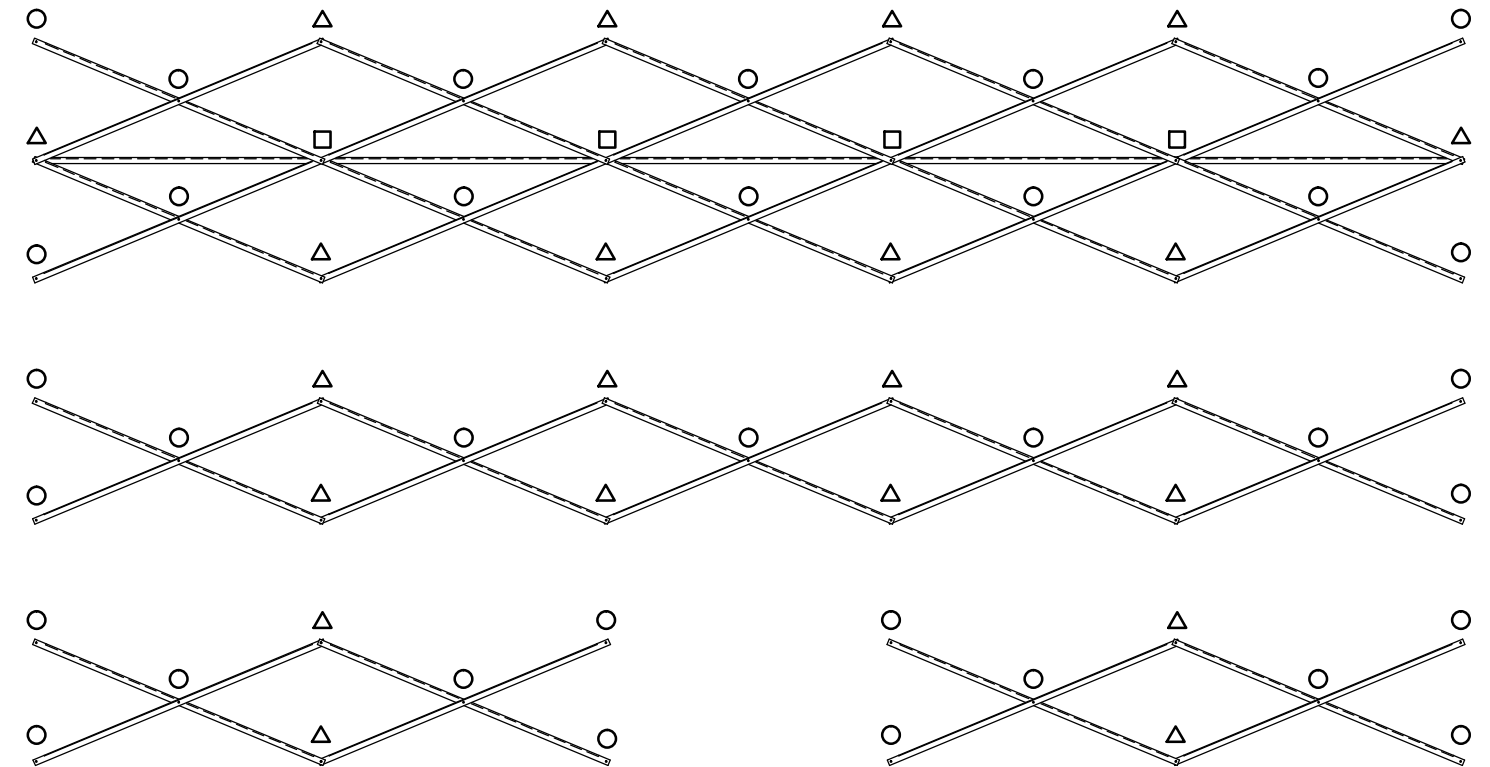
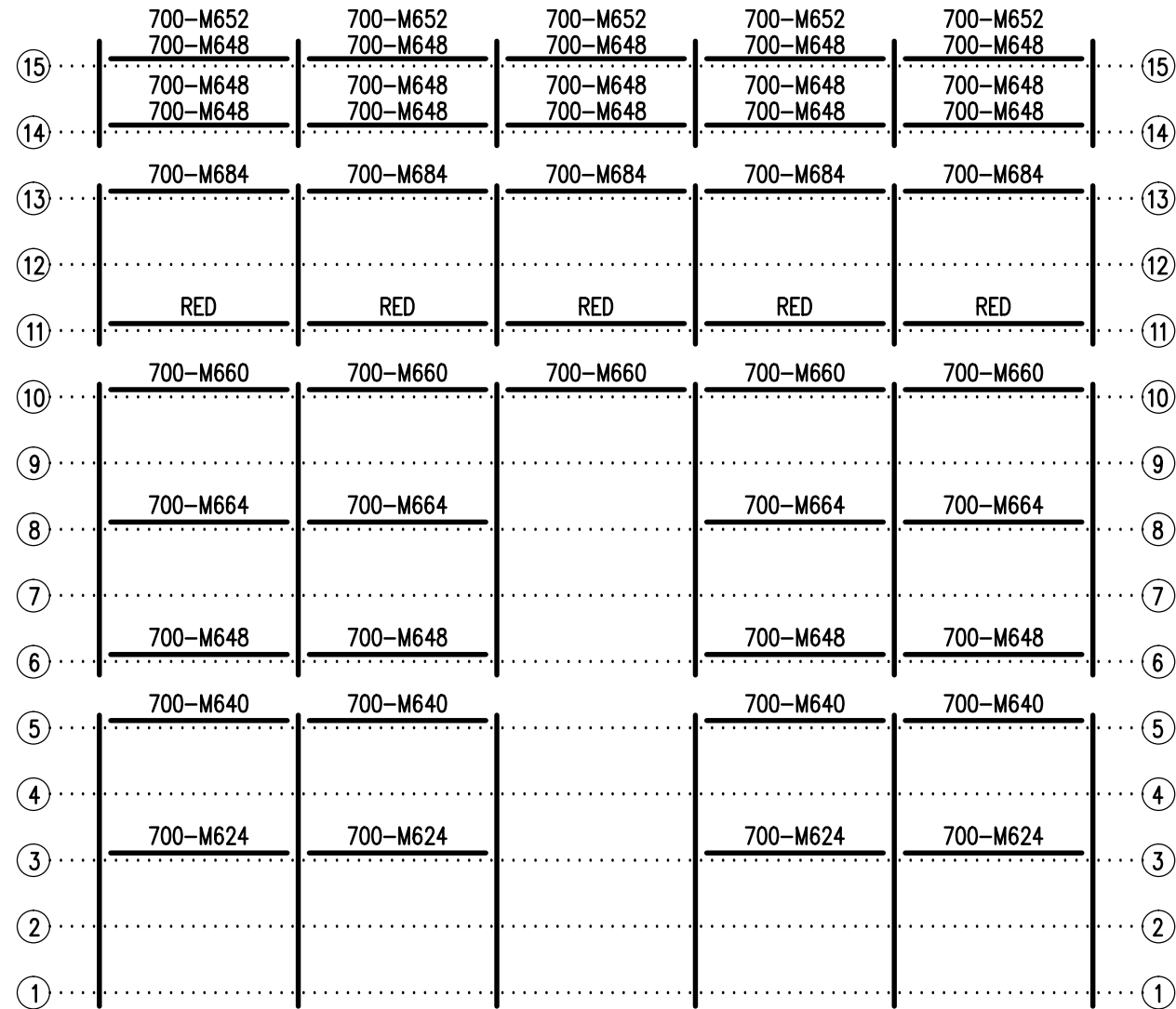
SEE REAR CORNER TIE
ASSEMBLY DETAIL
SEE DWG. 584-E1990



SEATING PLAN

3/16" = 1'-0"
274 NET SEATS @ 18" PER SEAT

		Outdoor Aluminum <small>P.O. BOX 118 GENEVA, ALABAMA 36340 334-684-2296</small>			
				SCALE 3/16"=1'-0"	REVISIONS
DATE	05/08/09	UPDATED TO 700 SERIES STANDARDS		GDK	02/13
DR'N	WHW	CKD			
AP'VD					
TITLE				NO.	
SGA 15-33 SEATING PLAN W/AISLE				584-E2288	



X-BRACE DETAIL


N.T.S.

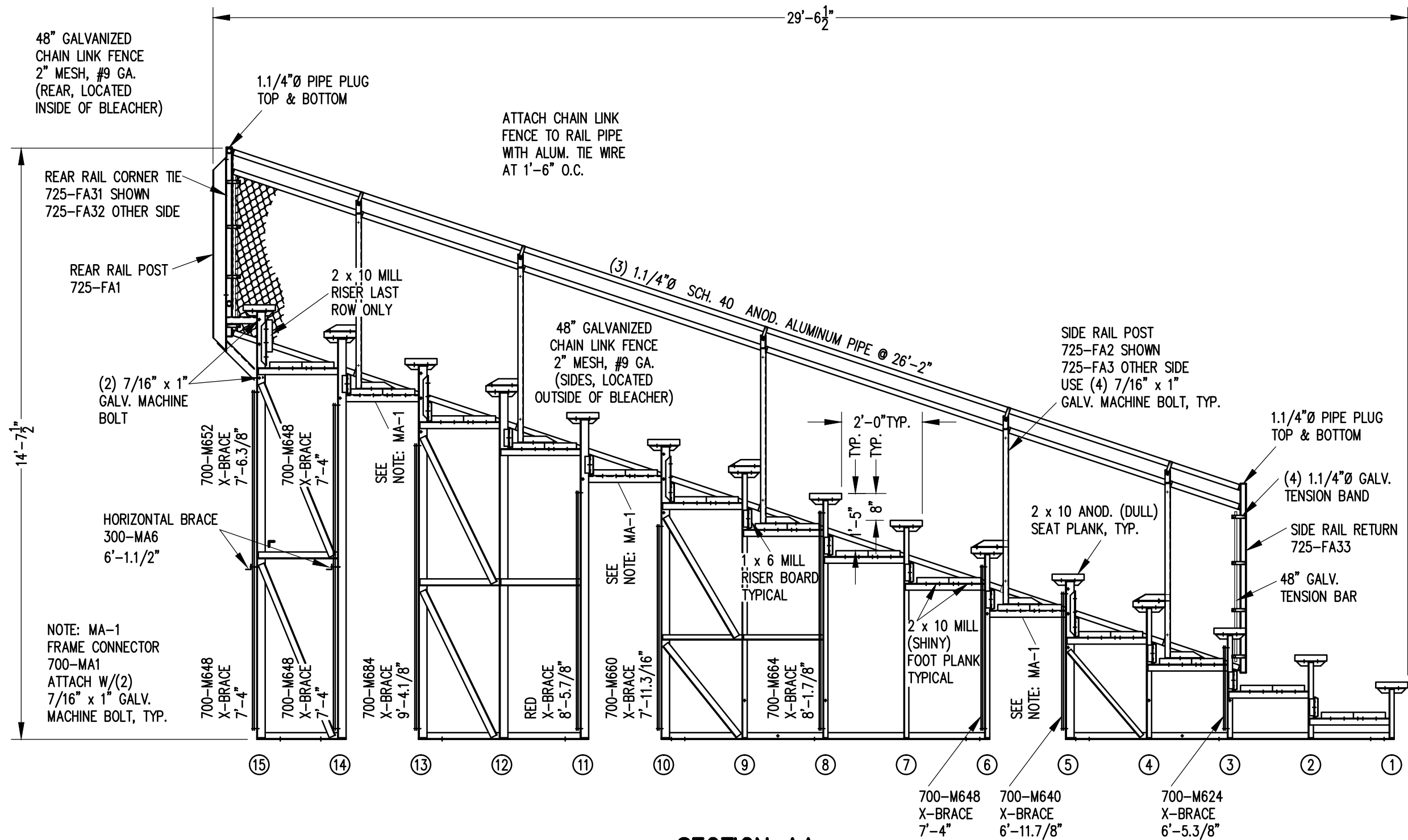
- 7/16" X 1" GALV. MACH. BOLT
- △ 7/16" X 1.1/2" GALV. MACH. BOLT
- 7/16" X 3" GALV. MACH. BOLT



FRAMING PLAN


3/16" = 1'-0"

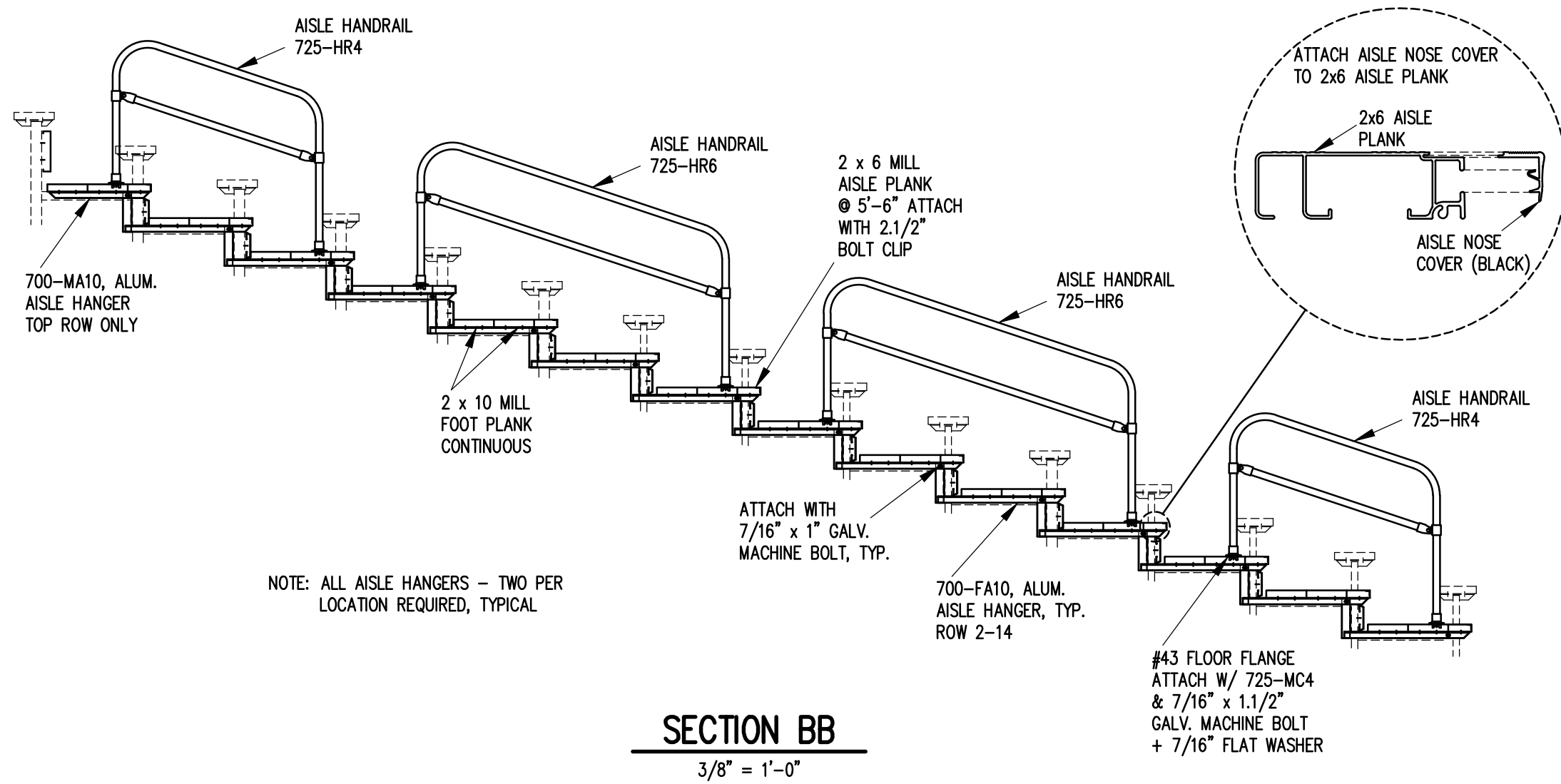
		Outdoor Aluminum <small>P.O. BOX 118 GENEVA, ALABAMA 36340 334-684-2296</small>		
				SCALE 3/16"=1'-0"
DATE 05/08/09	UPDATED TO 700 SERIES STANDARDS		GDK	02/13
DR'N WHW	CKD			
AP'VD				
TITLE SGA 15-33 FRAMING PLAN W/AISLE			NO. 584-E2289	




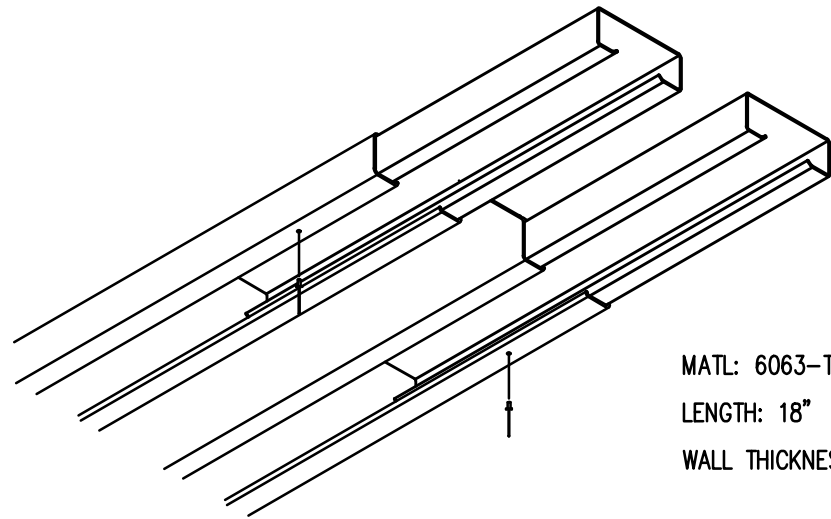
SECTION AA

3/8" = 1'-0"

		Outdoor Aluminum P.O. BOX 118 GENEVA, ALABAMA 36340 334-684-2296		
				SCALE
SCALE	05/08/09	UPDATED TO 700 SERIES STANDARDS	GDK	02/13
DR'N	WHW	CKD		
AP'VD				
TITLE			NO.	
SG 15 ROW SECTION DOUBLE FOOTBOARD			584-E2293	



		Outdoor Aluminum P.O. BOX 118 GENEVA, ALABAMA 36340 334-684-2296			
				SCALE	REVISIONS
3/8" = 1'-0"		UPDATED TO 700 SERIES STANDARDS		GDK	2/18/13
DATE	DR'N	CHKD			
05/08/09	WHW	CKD			
AP'VD					
TITLE				NO.	
SG 15 ROW AISLE SECTION				584-E2016	



MATL: 6063-T6 ALUMN.
 LENGTH: 18"
 WALL THICKNESS: .062"

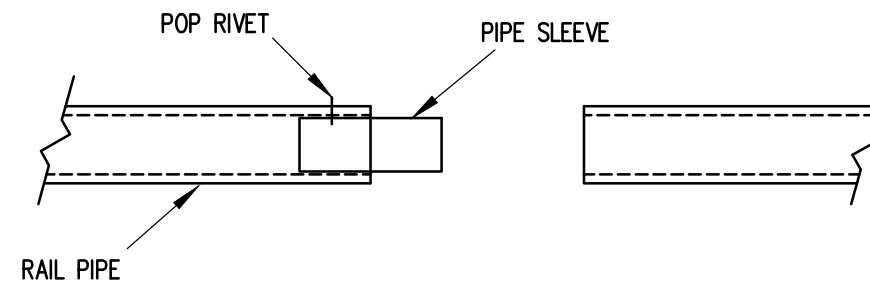
1) INSERT SLEEVES APPROXIMATELY HALFWAY INTO THE PLANK WITH THE ENDS STAGGERED ABOUT 1/2". FASTEN SLEEVE WITH (1) ALUMINUM POP RIVET.

2) SLIDE THE END OF THE ADJOINING PLANK OVER THE SLEEVES UNTIL THE TWO PLANKS ARE SNUG.

NOTE: SLEEVES SHOULD BE ATTACHED ON ONLY ONE END TO ALLOW FOR EXPANSION.

PLANK SPLICE SLEEVE ASSEMBLY

(TYP. @ ALL PLANK SPLICES)



PIPE SLEEVE ASSEMBLY

1.1/2" = 1' 0"

1) INSERT PIPE SLEEVE APPROXIMATELY HALFWAY INTO THE RAIL PIPE. FASTEN PIPE SLEEVE WITH (1) ALUMINUM POP RIVET (5/32" X 5/8")

2) SLIDE THE END OF THE ADJOINING RAILPIPE OVER THE PIPE SLEEVE UNTIL THE TWO RAILS ARE FLUSH.

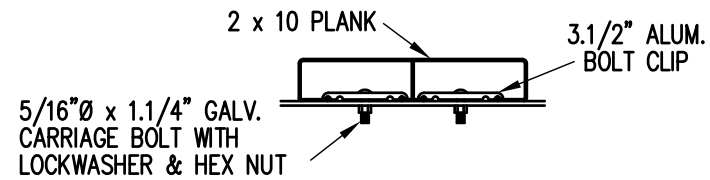
NOTE: PIPE SLEEVES SHOULD BE ATTACHED ON ONLY ONE END TO ALLOW FOR EXPANSION.



**Outdoor
Aluminum**

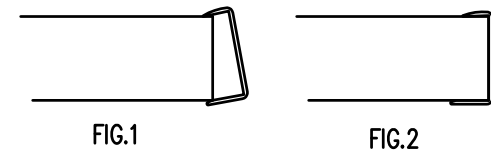
P.O. BOX 118
 GENEVA, ALABAMA 36340
 334-684-2296

SCALE	AS NOTED	REVISIONS	BY	DATE
DATE	11/6/00	UPDATED TO 700 SERIES STANDARDS	GDK	02/13
DR'N	SS	CKD		
AP'VD				
TITLE	SPLICE SLEEVE ASSEMBLY			NO. 584-E1994



BOLT CLIP DETAIL

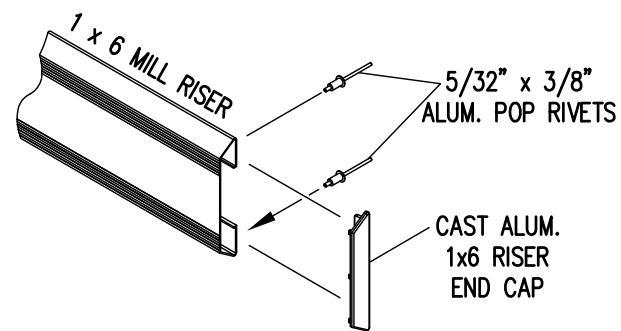
1.1/2" = 1'-0"



- 1) LOCATE THE CHANNEL END CAP AS SHOWN IN FIG. 1.
- 2) TAP END CAP INTO PLACE WITH RUBBER Mallet OR SOFT WOOD. FIG.2
- 3) DRILL 5/32" HOLES THROUGH THE BOTTOM FLANGE AND THE BOTTOM OUTSIDE PLANK FLANGES OF EACH PLANK. INSTALL 5/32" POP RIVETS.

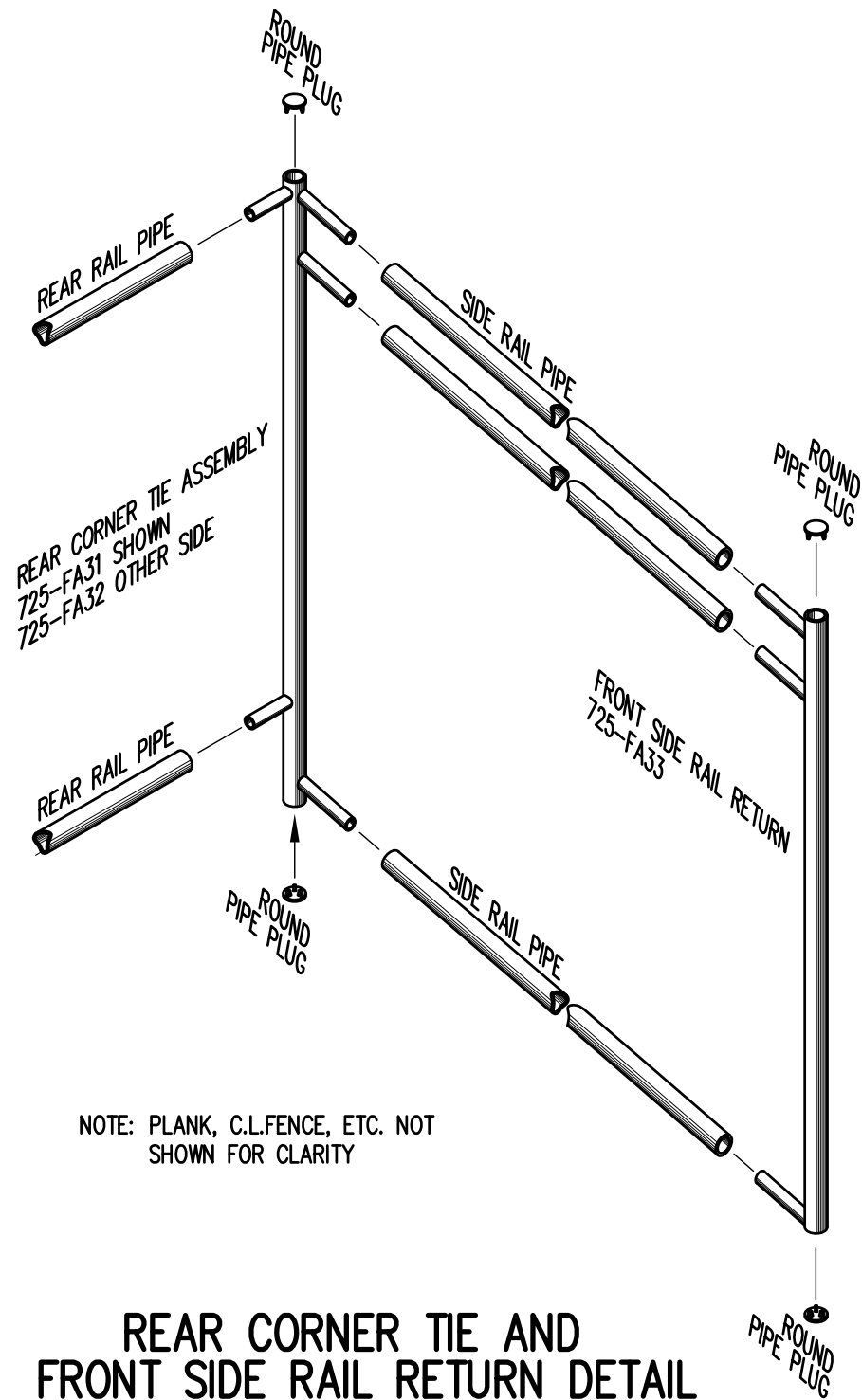
END CAP DETAIL

N.T.S.



1 x 6 RISER END CAP

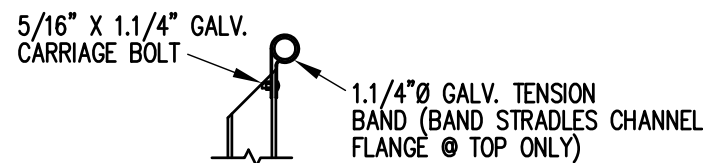
N.T.S.



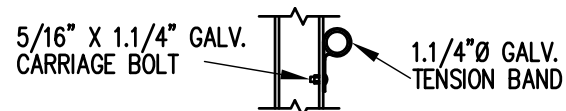
NOTE: PLANK, C.L.FENCE, ETC. NOT SHOWN FOR CLARITY

REAR CORNER TIE AND FRONT SIDE RAIL RETURN DETAIL

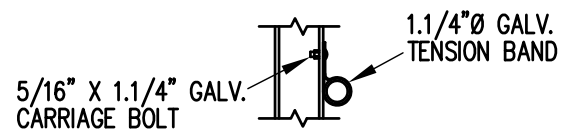
3/4" = 1'-0"



TOP RAIL

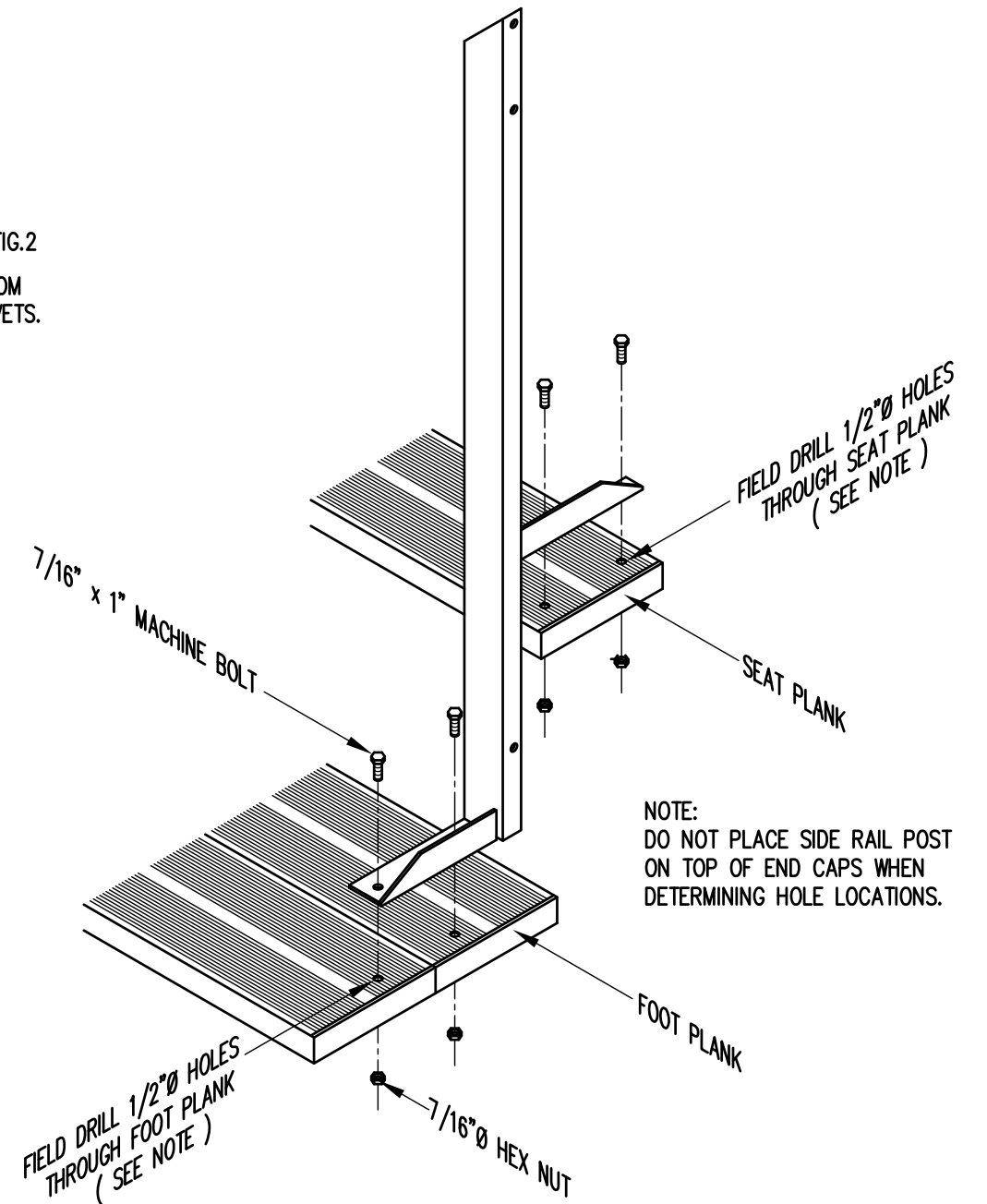


MID RAIL



LOWER RAIL

3/4" = 1'-0"



NOTE: DO NOT PLACE SIDE RAIL POST ON TOP OF END CAPS WHEN DETERMINING HOLE LOCATIONS.

TYP. SIDE RAIL POST ATTACHMENT

1" = 1'-0"

		P.O. BOX 118 GENEVA, ALABAMA 36340 334-684-2296				
		SCALE	AS NOTED	REVISIONS	BY	DATE
DATE	11/2/00	SIDE GUARDRAIL TO OUTSIDE		WHW	03/02	
DR'N	SS	CKD	UPDATED TO 700 SERIES STANDARDS		GDK	02/13
AP'VD						
TITLE				NO.		
TYPICAL DETAILS				584-E1990		