

SEATING PLAN

3/16" = 1'-0"

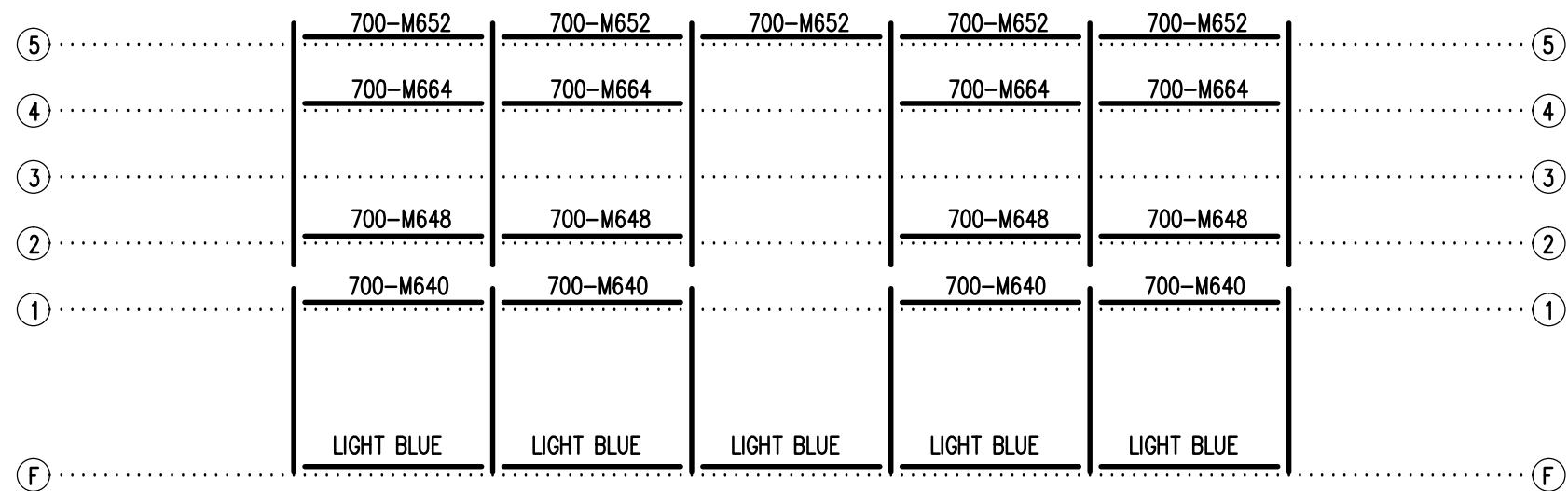
94 NET SEATS @ 18" PER SEAT



**Outdoor
Aluminum**

P.O. BOX 118
GENEVA, ALABAMA 36340
334-684-2296

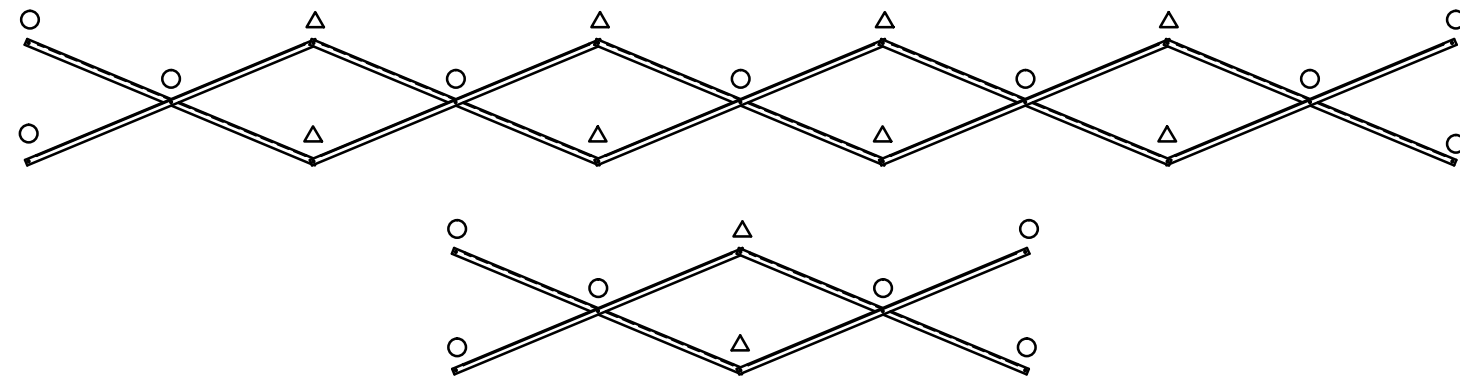
SCALE	3/16"=1'-0"	REVISIONS	BY	DATE
DATE	12/12/00	SIDE GUARDRAIL TO OUTSIDE	WHW	03/02
DR'N	5,5	CKD	UPDATED TO 700 SERIES STANDARDS	GDK 02/13
AP'VD				
TITLE	SGE 5-33 SEATING PLAN			NO. 584-E2176



1'-6" | 6'-0" | 6'-0" | 6'-0" | 6'-0" | 6'-0" | 1'-6" FRAME SPACING

FRAMING PLAN


3/16" = 1'-0"

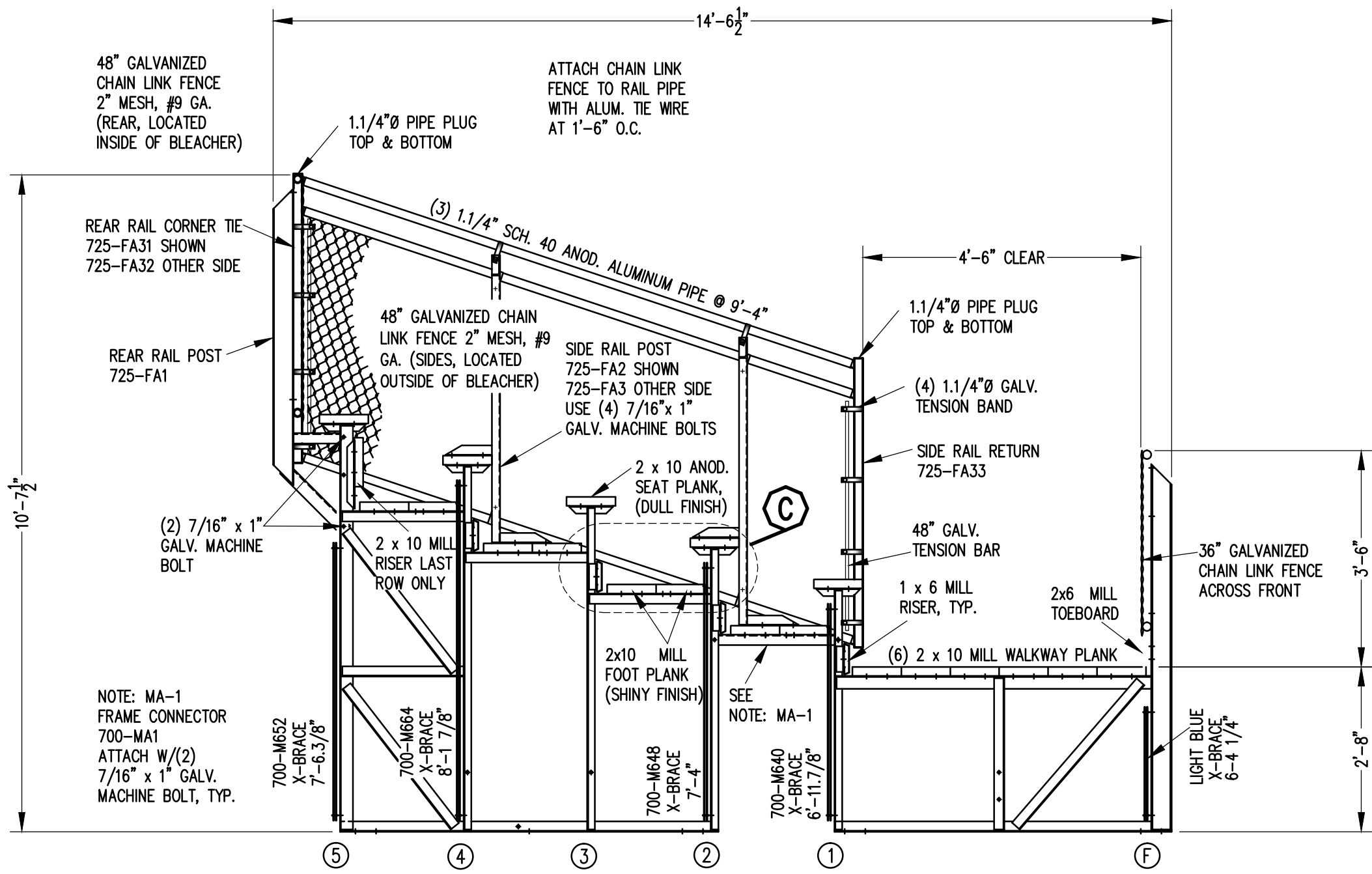


X-BRACE DETAIL

N.T.S.

- 7/16" X 1" GALV. MACH. BOLT
- △ 7/16" X 1.1/2" GALV. MACH. BOLT

		Outdoor Aluminum <small>P.O. BOX 118 GENEVA, ALABAMA 36340 334-684-2296</small>			
				SCALE 3/16"=1'-0"	REVISIONS
DATE 12/12/00		UPDATED TO 700 SERIES STANDARDS		GDK	02/13
DR'N SS CKD					
AP'VD					
TITLE				NO.	
SGE 5-33 FRAMING PLAN				584-E2246	

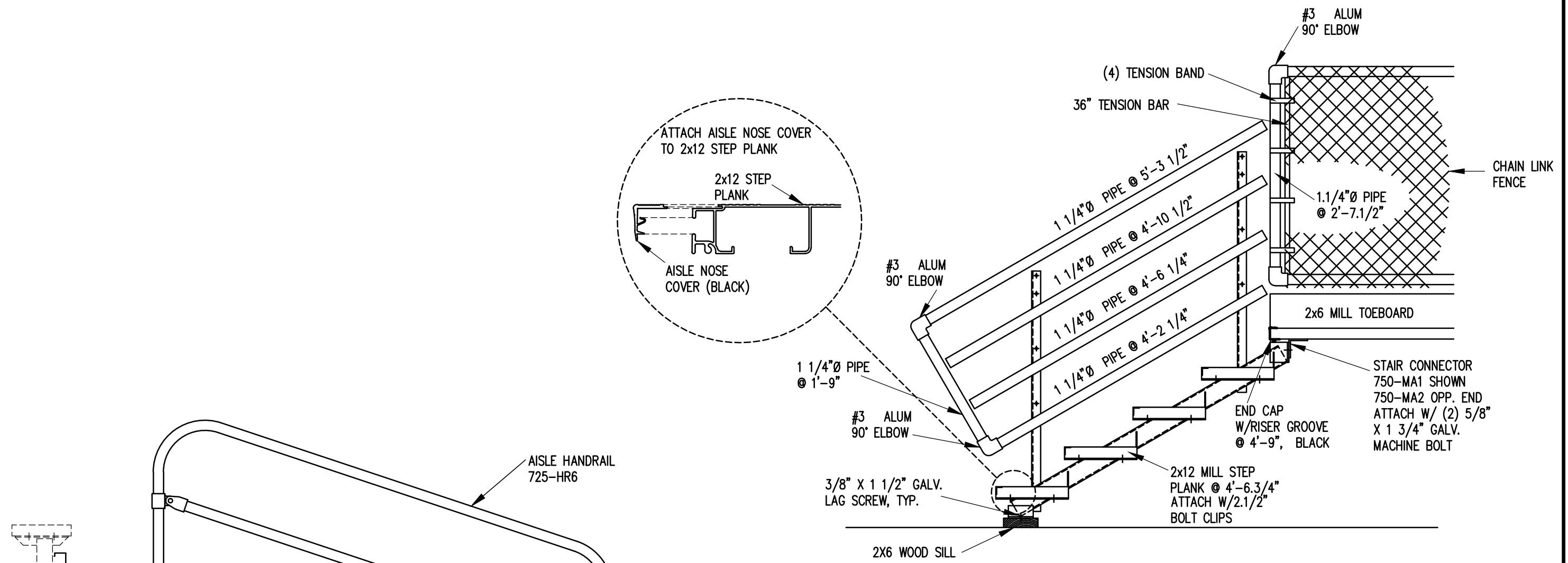


SECTION AA

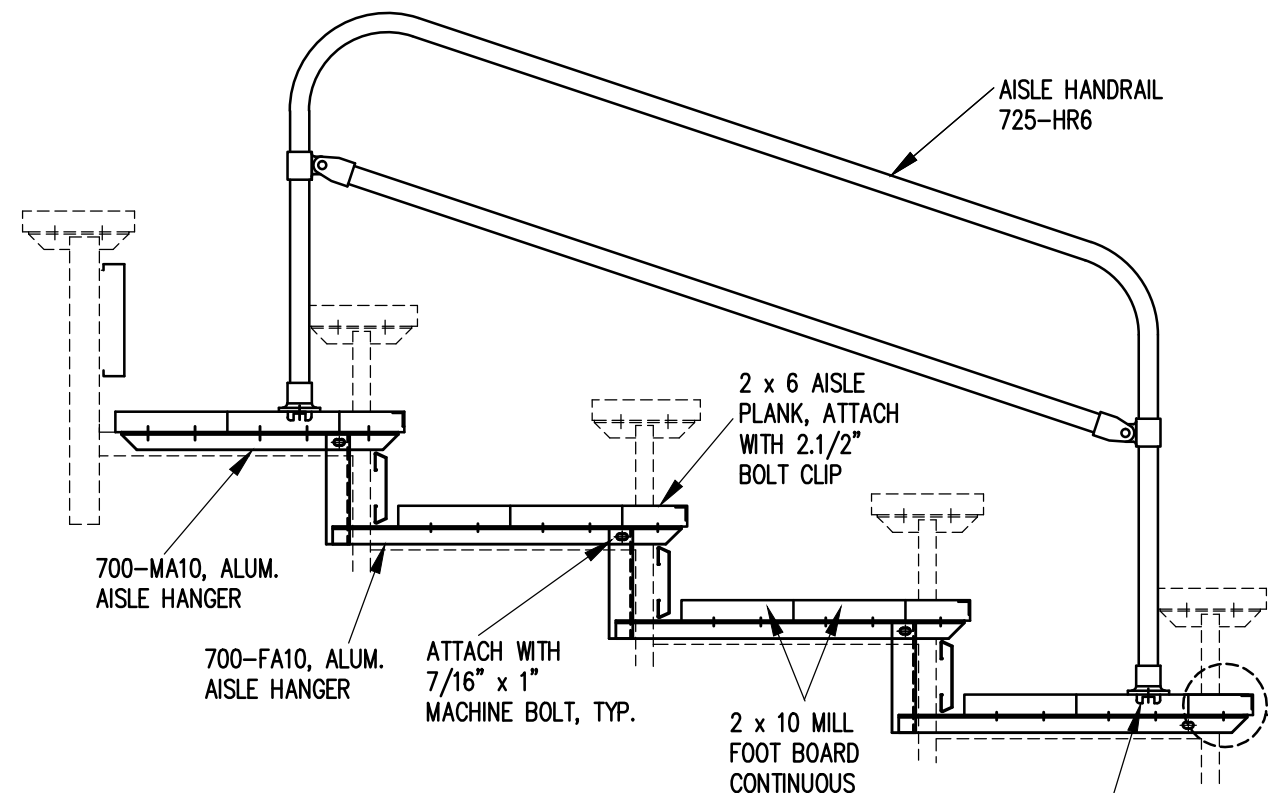
1/2" = 1'-0"

		Outdoor Aluminum P.O. BOX 118 GENEVA, ALABAMA 36340 334-684-2296		
				SCALE 1/2"=1'-0"
DATE 12/12/00	X-BRACE FROM BLUE TO DARK BLUE		CHM	03/97
DR'N 5,5	CKD	SIDE GUARDRAIL TO OUTSIDE	WHW	03/02
AP'VD	FOOTBOARD SUPPORT,FA17R2,FA22R1,MA8		RS	09/06
TITLE			NO.	
SGE 5 ROW SECTION			584-E2181	

REVISIONS	BY	DATE
UPDATED TO 700 SERIES STANDARDS	GDK	2/18/13

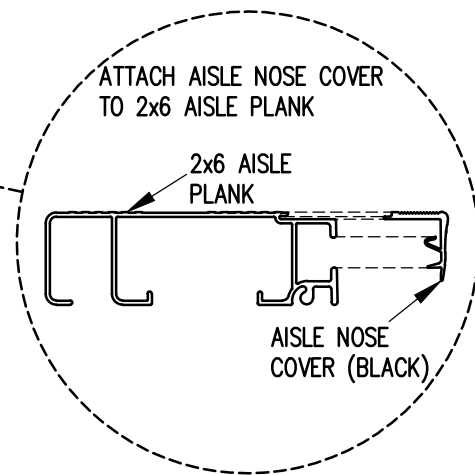
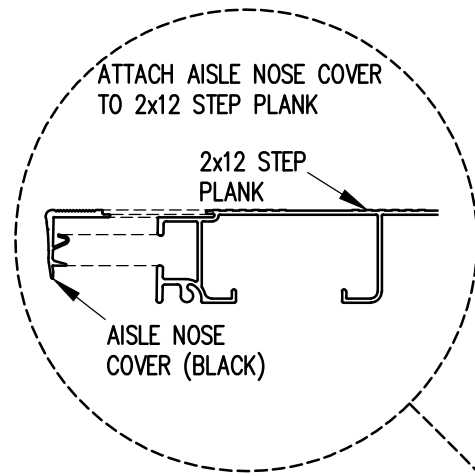


SECTION CC
3/4" = 1'-0"



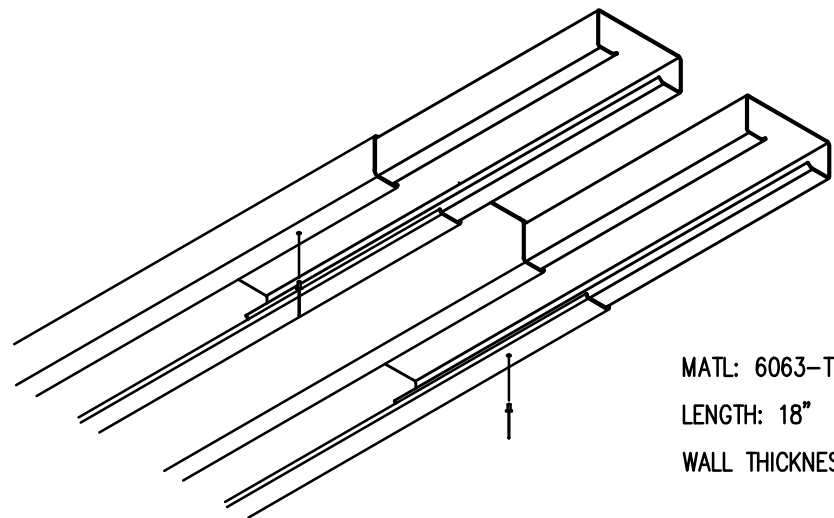
NOTE: ALL AISLE HANGERS - TWO PER LOCATION REQUIRED, TYPICAL

SECTION BB
3/4" = 1'-0"



#43 FLOOR FLANGE
ATTACH W/ 725-MC4
& 7/16" x 1.1/2"
GALV. MACHINE BOLT
+ 7/16" FLAT WASHER

		Outdoor Aluminum P.O. BOX 118 GENEVA, ALABAMA 36340 334-684-2296			
				SCALE	REVISIONS
DATE	12/08/00	AISLE NOSE COVER		WHW	03/02
DR'N	5,5 CKD	UPDATED TO 700 SERIES STANDARDS		GDK	02/13
AP'VD					
TITLE				NO.	
SGE 5 ROW AISLE & STAIR SECTION				584-E1997	



MATL: 6063-T6 ALUMN.
 LENGTH: 18"
 WALL THICKNESS: .062"

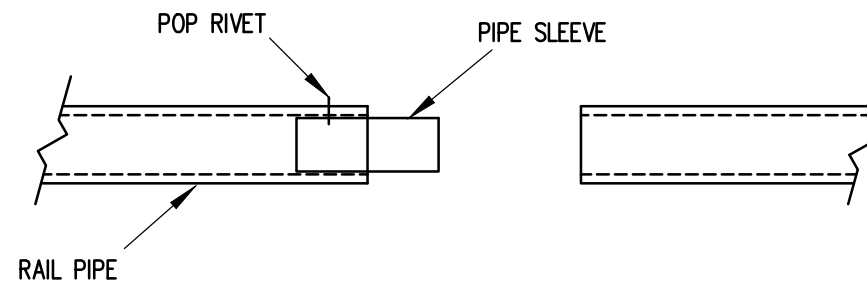
1) INSERT SLEEVES APPROXIMATELY HALFWAY INTO THE PLANK WITH THE ENDS STAGGERED ABOUT 1/2". FASTEN SLEEVE WITH (1) ALUMINUM POP RIVET.

2) SLIDE THE END OF THE ADJOINING PLANK OVER THE SLEEVES UNTIL THE TWO PLANKS ARE SNUG.

NOTE: SLEEVES SHOULD BE ATTACHED ON ONLY ONE END TO ALLOW FOR EXPANSION.

PLANK SPLICE SLEEVE ASSEMBLY

(TYP. @ ALL PLANK SPLICES)




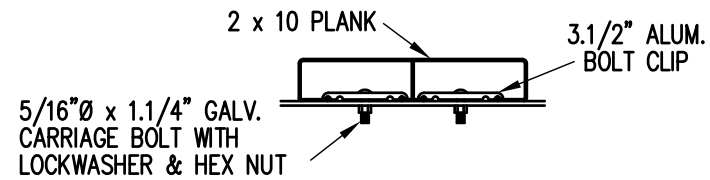
PIPE SLEEVE ASSEMBLY

1.1/2" = 1' 0"

- 1) INSERT PIPE SLEEVE APPROXIMATELY HALFWAY INTO THE RAIL PIPE. FASTEN PIPE SLEEVE WITH (1) ALUMINUM POP RIVET (5/32" X 5/8")
- 2) SLIDE THE END OF THE ADJOINING RAILPIPE OVER THE PIPE SLEEVE UNTIL THE TWO RAILS ARE FLUSH.

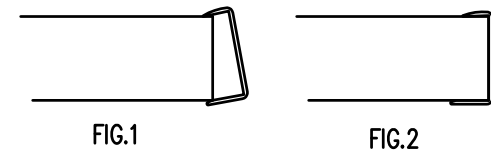
NOTE: PIPE SLEEVES SHOULD BE ATTACHED ON ONLY ONE END TO ALLOW FOR EXPANSION.

		Outdoor Aluminum P.O. BOX 118 GENEVA, ALABAMA 36340 334-684-2296			
				SCALE	AS NOTED
DATE	11/6/00	UPDATED TO 700 SERIES STANDARDS		GDK	02/13
DR'N	SS	CKD			
AP'VD					
TITLE					NO.
SPLICE SLEEVE ASSEMBLY					584-E1994



BOLT CLIP DETAIL

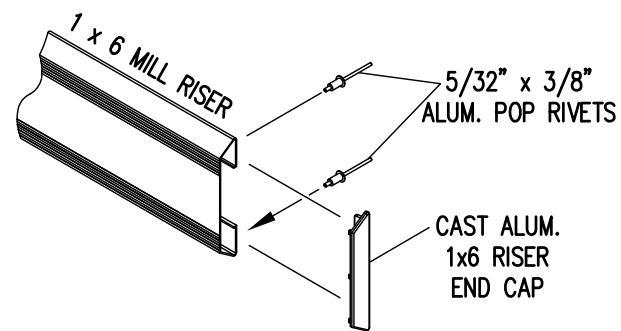
1.1/2" = 1'-0"



- 1) LOCATE THE CHANNEL END CAP AS SHOWN IN FIG. 1.
- 2) TAP END CAP INTO PLACE WITH RUBBER Mallet OR SOFT WOOD. FIG.2
- 3) DRILL 5/32" HOLES THROUGH THE BOTTOM FLANGE AND THE BOTTOM OUTSIDE PLANK FLANGES OF EACH PLANK. INSTALL 5/32" POP RIVETS.

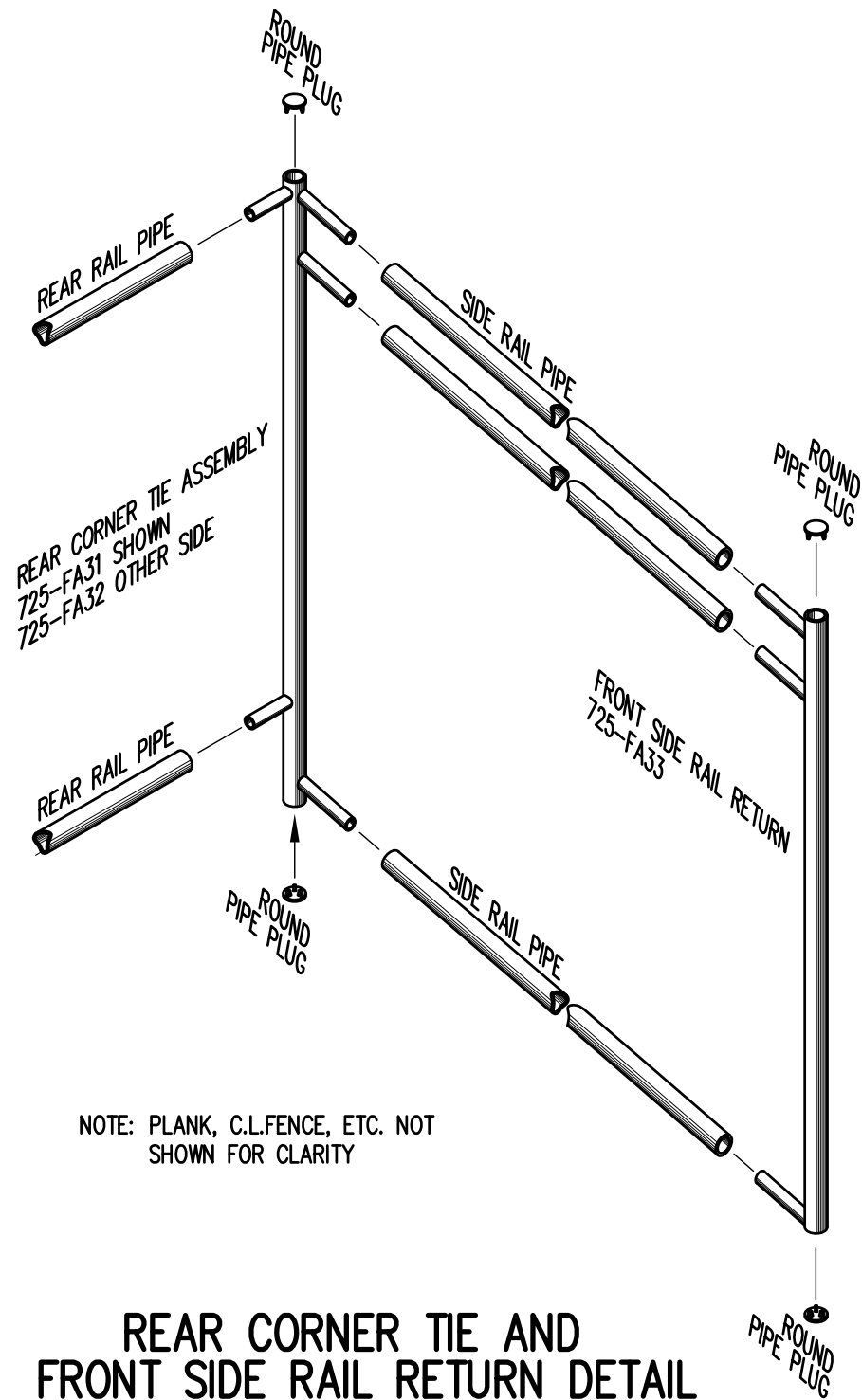
END CAP DETAIL

N.T.S.



1 x 6 RISER END CAP

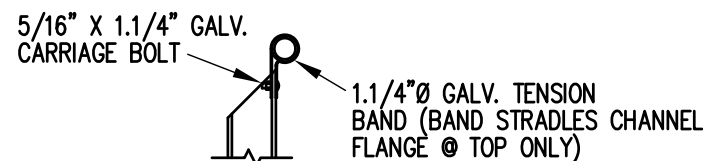
N.T.S.



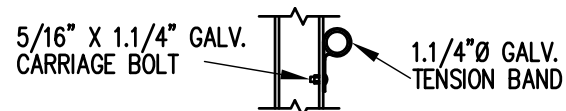
NOTE: PLANK, C.L.FENCE, ETC. NOT SHOWN FOR CLARITY

REAR CORNER TIE AND FRONT SIDE RAIL RETURN DETAIL

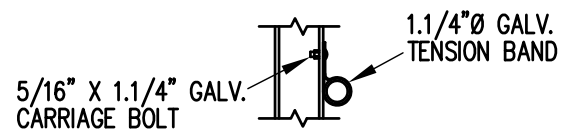
3/4" = 1'-0"



TOP RAIL

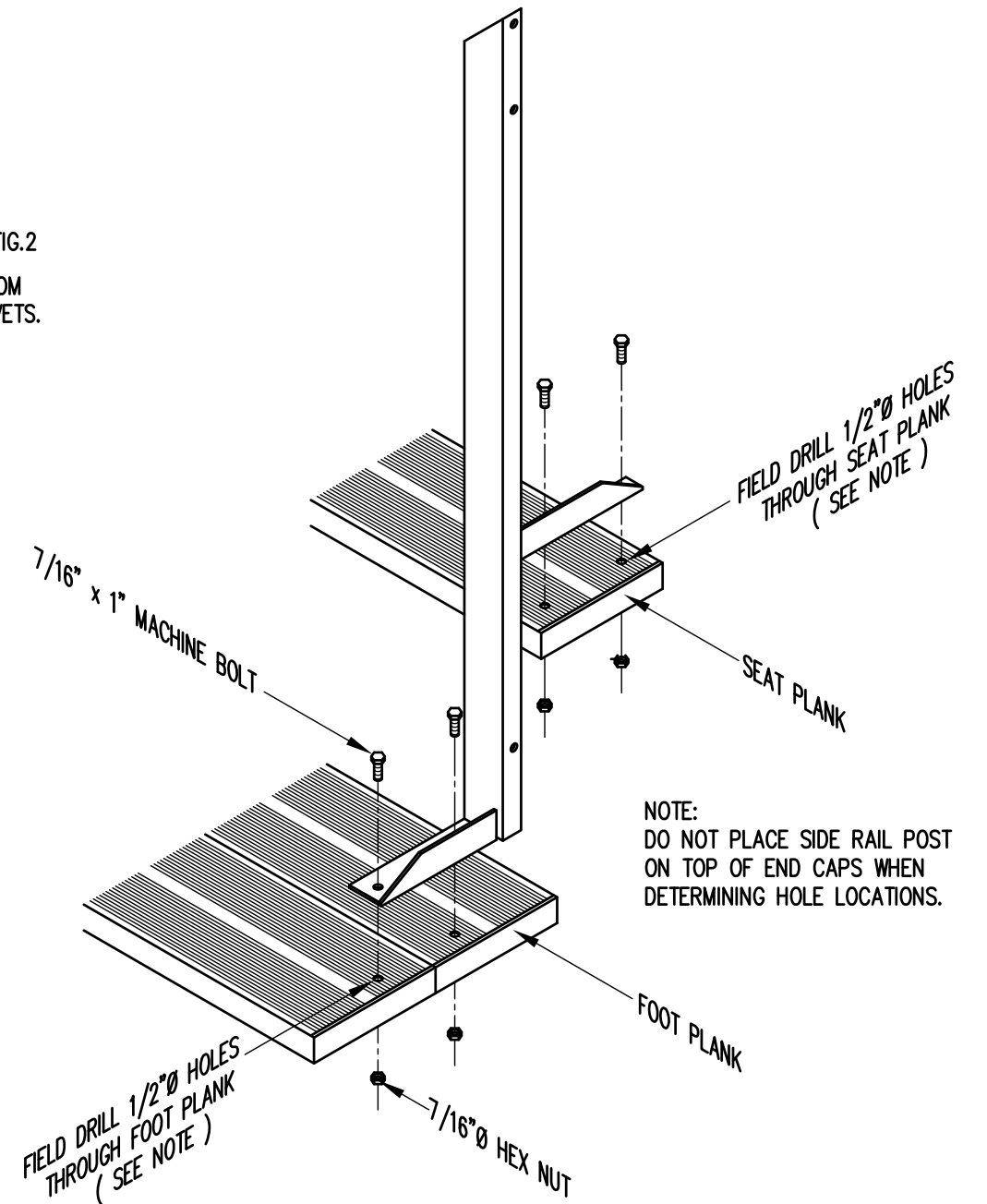


MID RAIL



LOWER RAIL

3/4" = 1'-0"



NOTE: DO NOT PLACE SIDE RAIL POST ON TOP OF END CAPS WHEN DETERMINING HOLE LOCATIONS.

TYP. SIDE RAIL POST ATTACHMENT

1" = 1'-0"

		P.O. BOX 118 GENEVA, ALABAMA 36340 334-684-2296			
		SCALE AS NOTED	REVISIONS	BY	DATE
DATE	11/2/00	SIDE GUARDRAIL TO OUTSIDE		WHW	03/02
DR'N	SS CKD	UPDATED TO 700 SERIES STANDARDS		GDK	02/13
AP'VD					
TITLE				NO.	
TYPICAL DETAILS				584-E1990	