

### SEATING PLAN

3/16" = 1'-0"

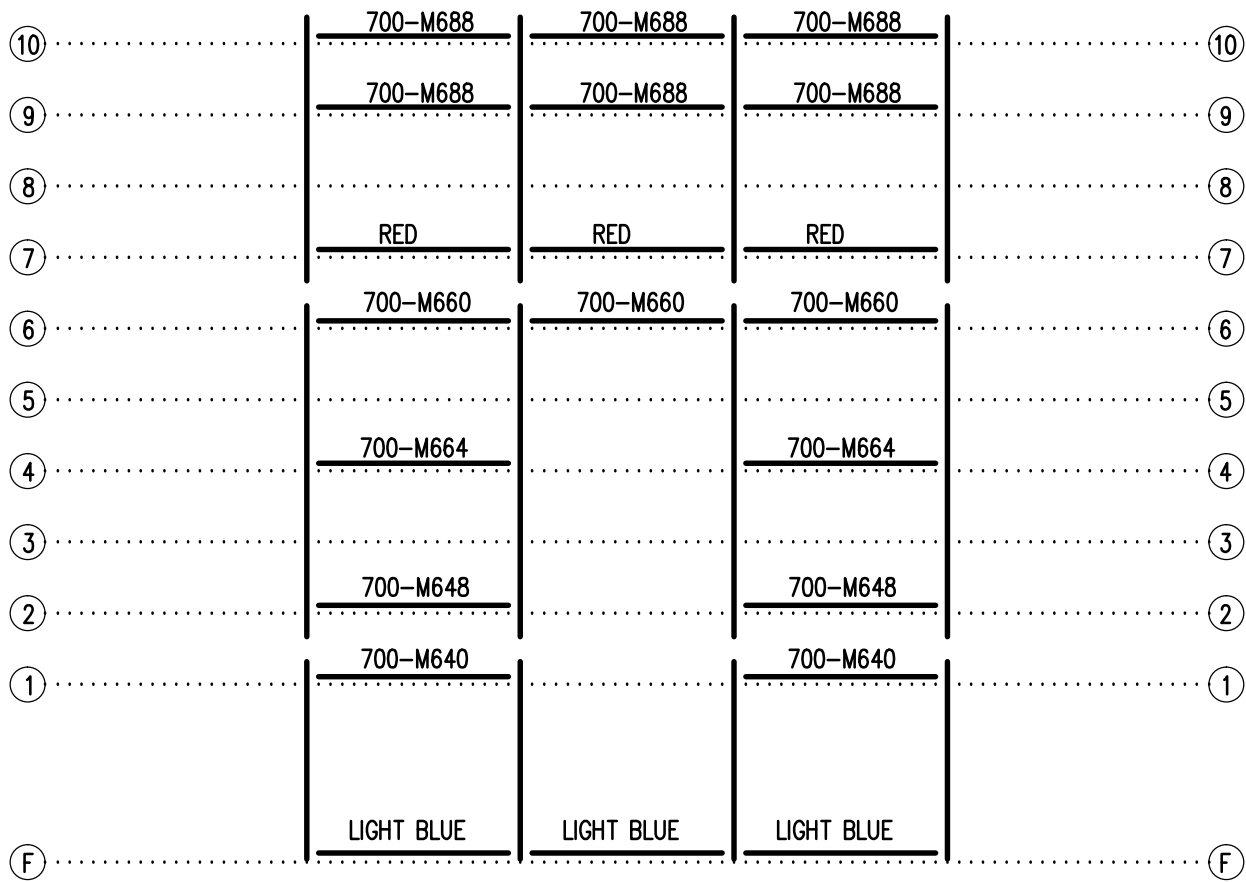
104 NET SEATS @ 18" PER SEAT



**Outdoor  
Aluminum**

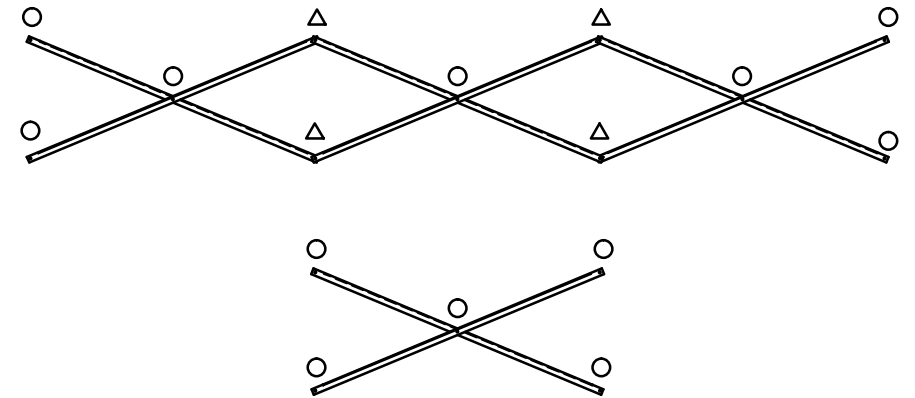
P.O. BOX 118  
GENEVA, ALABAMA 36340  
334-684-2296

| SCALE                  | REVISIONS                       | BY  | DATE             |
|------------------------|---------------------------------|-----|------------------|
| 3/16"=1'-0"            |                                 |     |                  |
| DATE                   | SIDE GUARDRAIL TO OUTSIDE       | WHW | 03/02            |
| DR'N                   | UPDATED TO 700 SERIES STANDARDS | GDK | 02/13            |
| AP'VD                  |                                 |     |                  |
| TITLE                  |                                 |     | NO.              |
| SGE 10-21 SEATING PLAN |                                 |     | <b>584-E2206</b> |



1'-6"    6'-0"    6'-0"    6'-0"    1'-6" ..... FRAME SPACING


**FRAMING PLAN**  
3/16" = 1'-0"

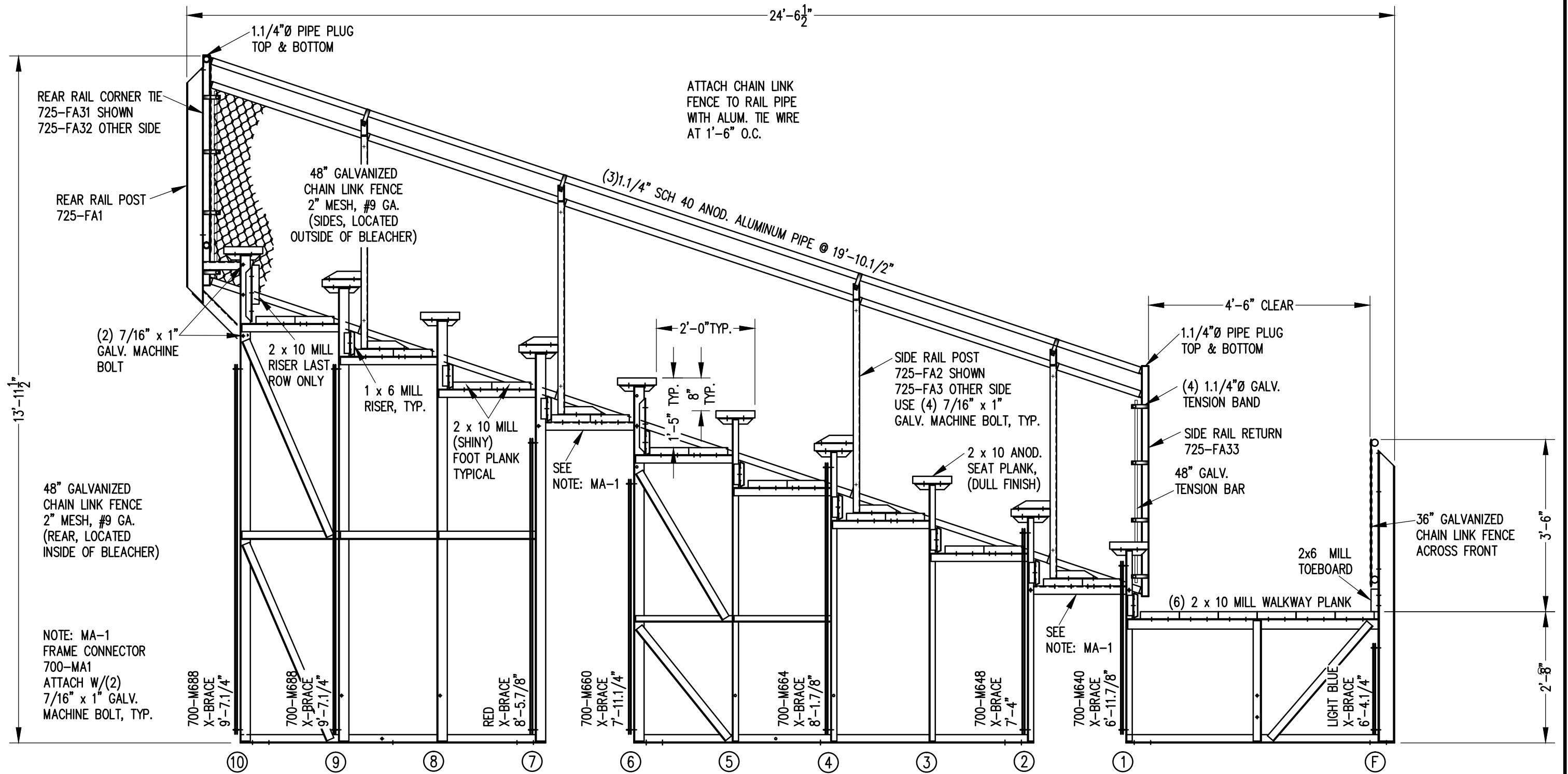


**X-BRACE DETAIL**

N.T.S.

- 7/16" X 1" GALV. MACH. BOLT
- △ 7/16" X 1.1/2" GALV. MACH. BOLT

|   |                                 |   |                         |                   |
|---|---------------------------------|---|-------------------------|-------------------|
|  |                                 | <b>Outdoor Aluminum</b><br><small>P.O. BOX 118<br/>         GENEVA, ALABAMA 36340<br/>         334-684-2296</small> |                         |                   |
|   |                                 |   |                         | SCALE 3/16"=1'-0" |
| DATE 11/13/00   | UPDATED TO 700 SERIES STANDARDS |   | GDK                     | 02/13             |
| DR'N 5,5  | CKD                             |   |                         |                   |
| AP'VD   |                                 |   |                         |                   |
| TITLE<br>SGE 10-21 FRAMING PLAN   |                                 |   | NO.<br><b>584-E2256</b> |                   |

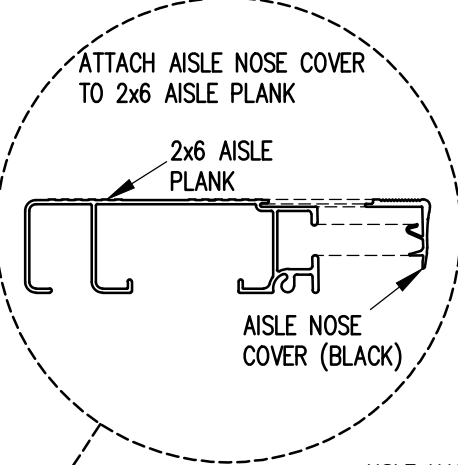
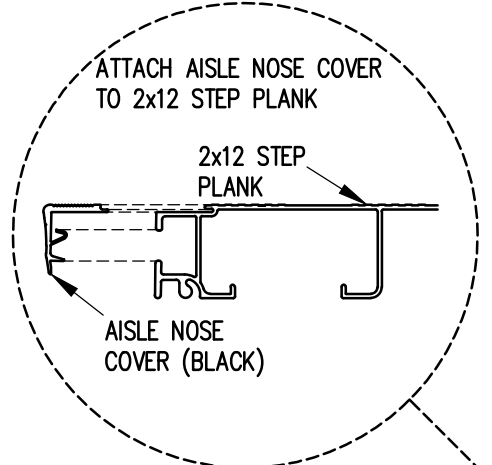
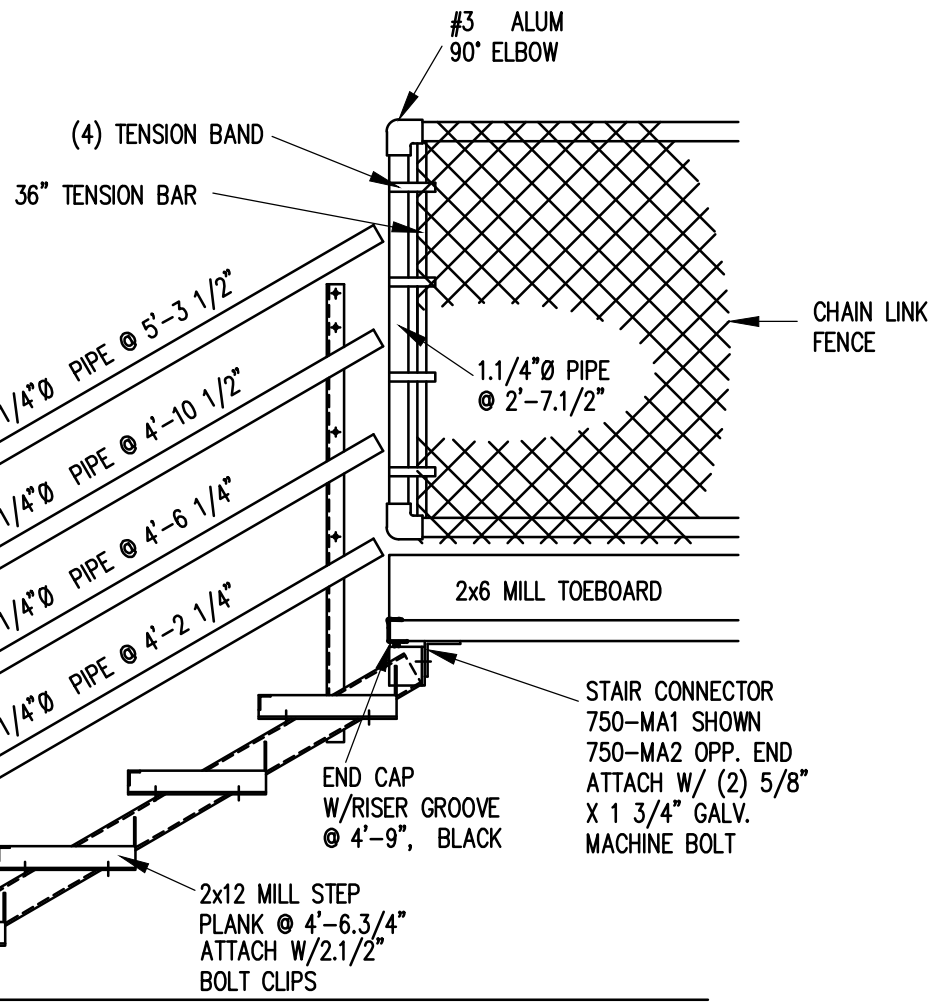
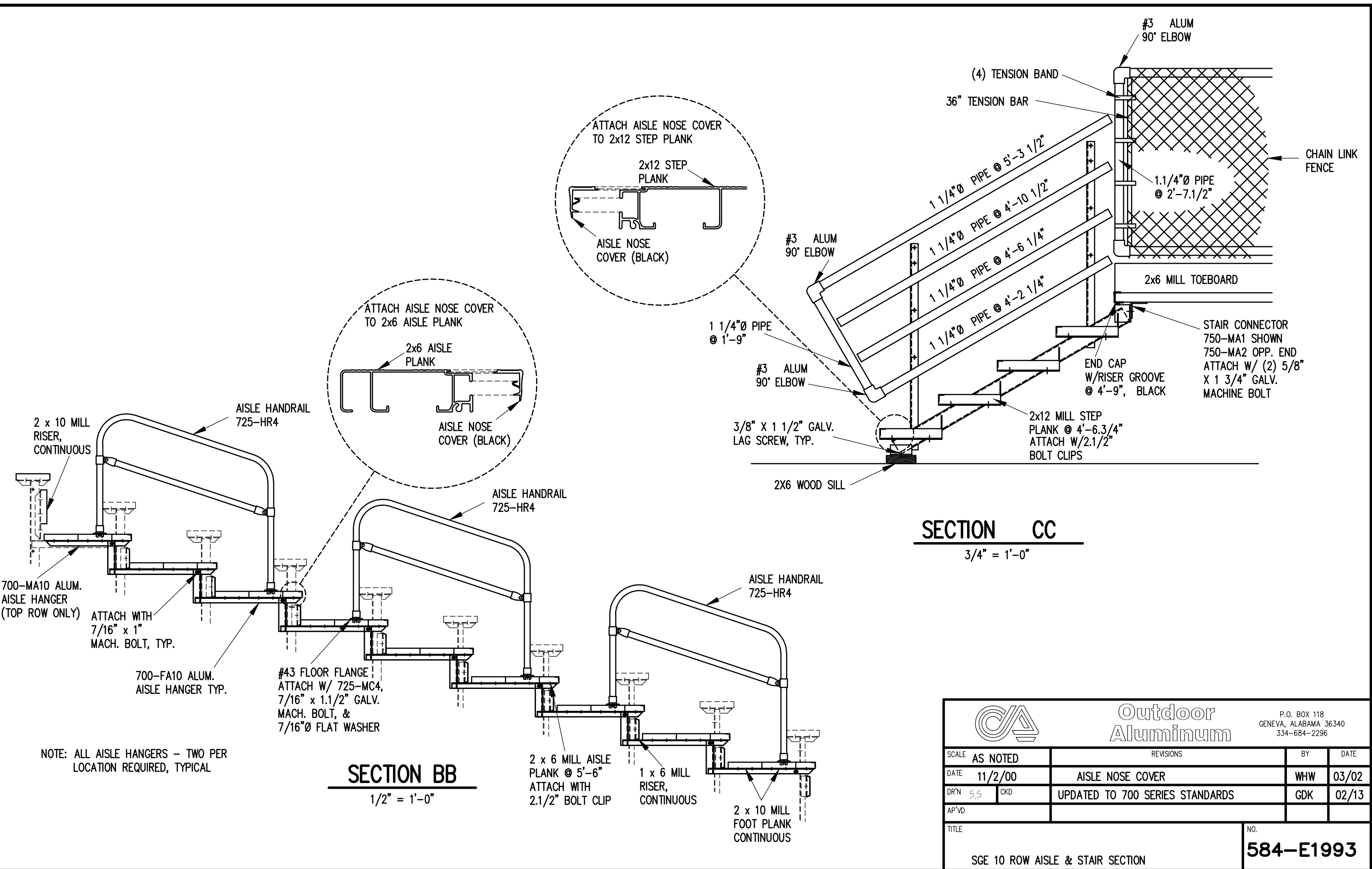


**SECTION AA**

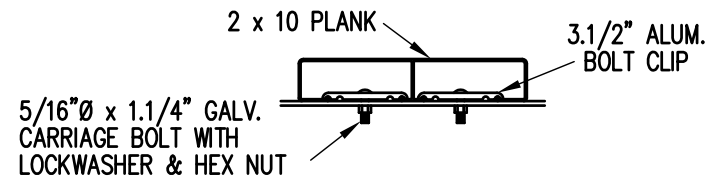
1/2" = 1'-0"

| REVISIONS                       | BY  | DATE    |
|---------------------------------|-----|---------|
| UPDATED TO 700 SERIES STANDARDS | GDK | 2/18/13 |
|                                 |     |         |
|                                 |     |         |

|              |                                      |   |               |
|--------------|--------------------------------------|---|---------------|
|              |                                      | P.O. BOX 118<br>GENEVA, ALABAMA 36340<br>334-684-2296 |               |
|              |                                      | SCALE 1/2"=1'-0"                                      | REVISIONS     |
| DATE 11/2/00 | X-BRACE FROM BLUE TO DARK BLUE       | CHM   | 03/97         |
| DR'N 5,5 CKD | SIDE GUARDRAIL TO OUTSIDE            | WHW   | 03/02         |
| AP'VD        | FOOTBOARD SUPPORT,FA17R2,FA22R1,MA-8 | RS  | 09/06         |
| TITLE        | SGE 10 ROW SECTION                   |   | NO. 584-E2221 |



|                                  |         |   |          |           |       |
|----------------------------------|---------|---|----------|-----------|-------|
|                                  |         | P.O. BOX 118<br>GENEVA, ALABAMA 36340<br>334-684-2296 |          |           |       |
|                                  |         | SCALE   | AS NOTED | REVISIONS | BY    |
| DATE                             | 11/2/00 | AISLE NOSE COVER                                      |          | WHW       | 03/02 |
| DR'N                             | 5,5 CKD | UPDATED TO 700 SERIES STANDARDS                       |          | GDK       | 02/13 |
| AP'VD                            |         |   |          |           |       |
| TITLE                            |         |   |          | NO.       |       |
| SGE 10 ROW AISLE & STAIR SECTION |         |   |          | 584-E1993 |       |



**BOLT CLIP DETAIL**

1.1/2" = 1'-0"

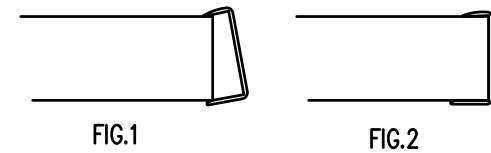


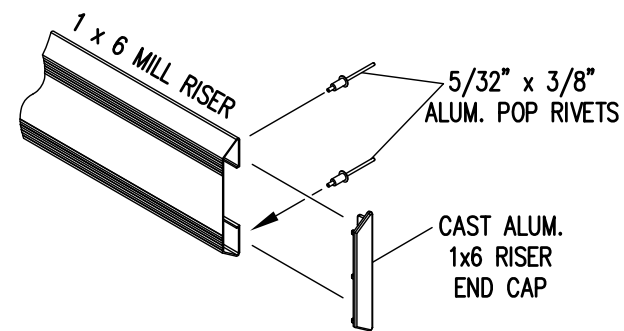
FIG.1

FIG.2

- 1) LOCATE THE CHANNEL END CAP AS SHOWN IN FIG. 1.
- 2) TAP END CAP INTO PLACE WITH RUBBER Mallet OR SOFT WOOD. FIG.2
- 3) DRILL 5/32" HOLES THROUGH THE BOTTOM FLANGE AND THE BOTTOM OUTSIDE PLANK FLANGES OF EACH PLANK. INSTALL 5/32" POP RIVETS.

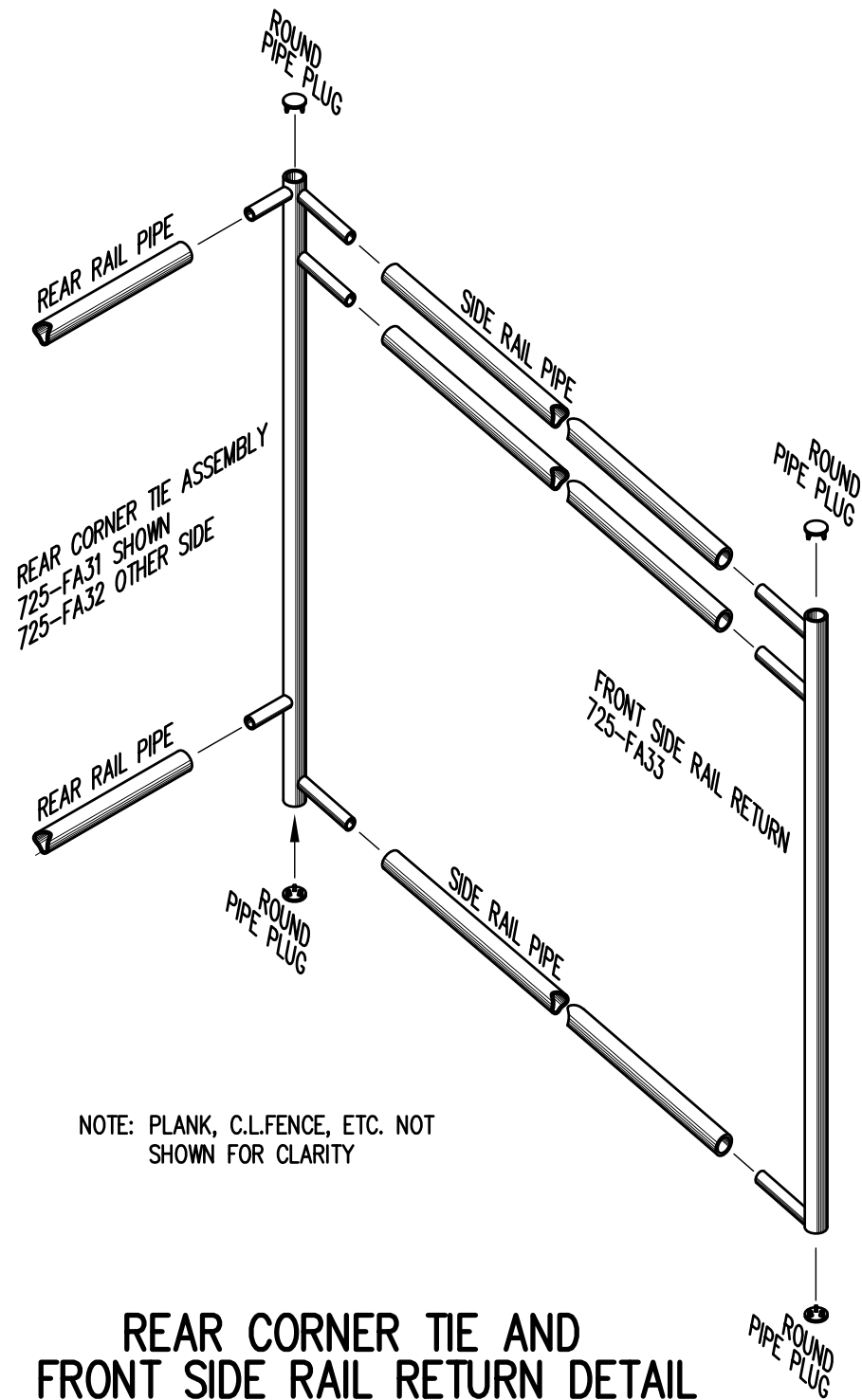
**END CAP DETAIL**

N.T.S.



**1 x 6 RISER END CAP**

N.T.S.

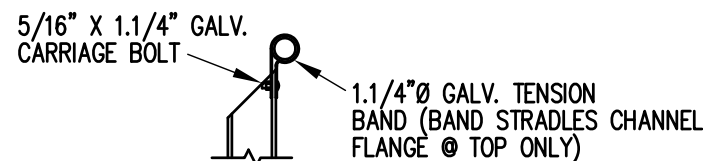


REAR CORNER TIE ASSEMBLY  
725-FA31 SHOWN  
725-FA32 OTHER SIDE

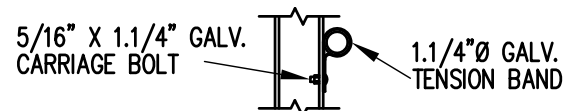
NOTE: PLANK, C.L.FENCE, ETC. NOT SHOWN FOR CLARITY

**REAR CORNER TIE AND FRONT SIDE RAIL RETURN DETAIL**

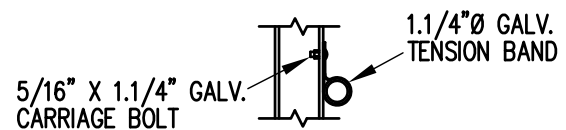
3/4" = 1'-0"



**TOP RAIL**

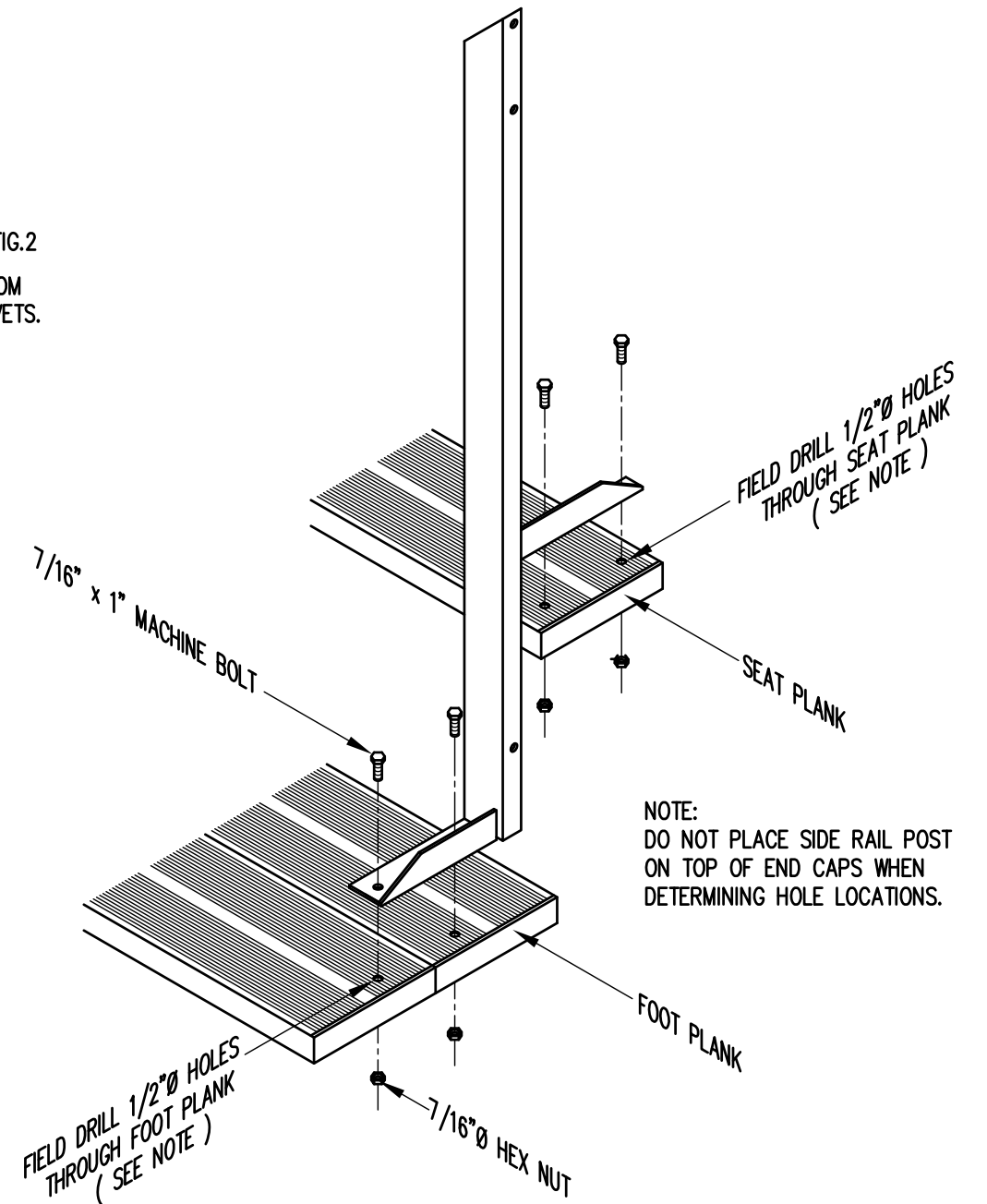


**MID RAIL**



**LOWER RAIL**

3/4" = 1'-0"



NOTE: DO NOT PLACE SIDE RAIL POST ON TOP OF END CAPS WHEN DETERMINING HOLE LOCATIONS.

**TYP. SIDE RAIL POST ATTACHMENT**

1" = 1'-0"

|                 |         |   |           |           |       |
|-----------------|---------|---|-----------|-----------|-------|
|                 |         | P.O. BOX 118<br>GENEVA, ALABAMA 36340<br>334-684-2296 |           |           |       |
|                 |         | SCALE AS NOTED  | REVISIONS | BY        | DATE  |
| DATE            | 11/2/00 | SIDE GUARDRAIL TO OUTSIDE                             |           | WHW       | 03/02 |
| DR'N            | SS CKD  | UPDATED TO 700 SERIES STANDARDS                       |           | GDK       | 02/13 |
| AP'VD           |         |   |           |           |       |
| TITLE           |         |   |           | NO.       |       |
| TYPICAL DETAILS |         |   |           | 584-E1990 |       |