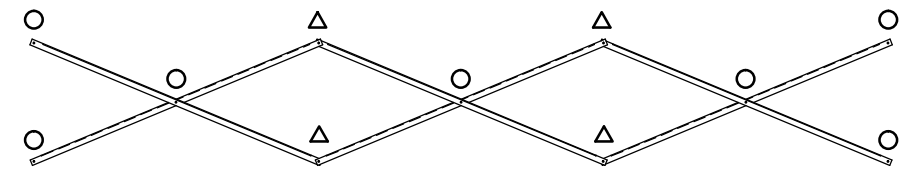


SEATING & FRAMING PLAN

1/4" = 1'-0"
42 NET SEATS @ 18" PER SEAT

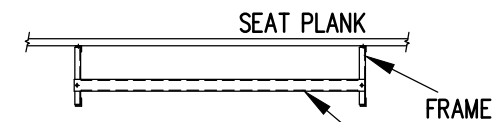
- DENOTES AXLE SLEEVE LOCATIONS
- ▷ DENOTES TONGUE GUIDE LOCATIONS



X-BRACE DETAIL

N.T.S.

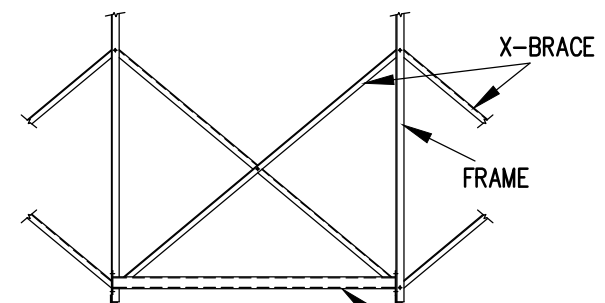
- 7/16" X 1" GALV. MACH. BOLT
- △ 7/16" X 1.1/2" GALV. MACH. BOLT



VIEW CC

N.T.S.

700-MC99 - ATTACH WITH (2) 7/16" x 1" GALV. MACH. BOLT.

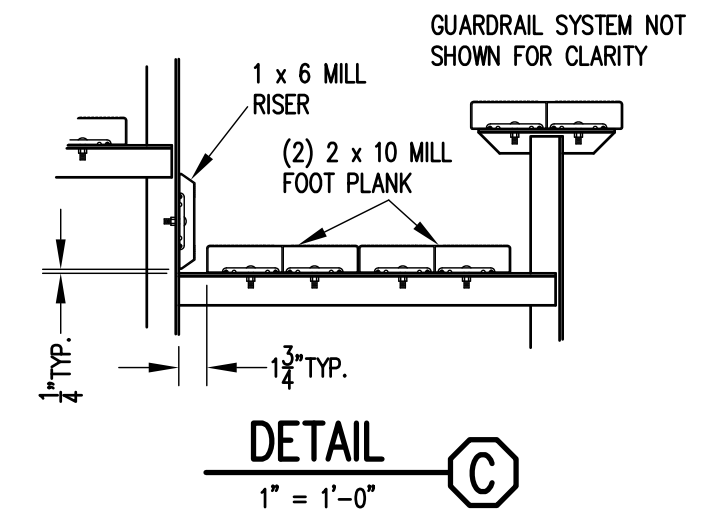
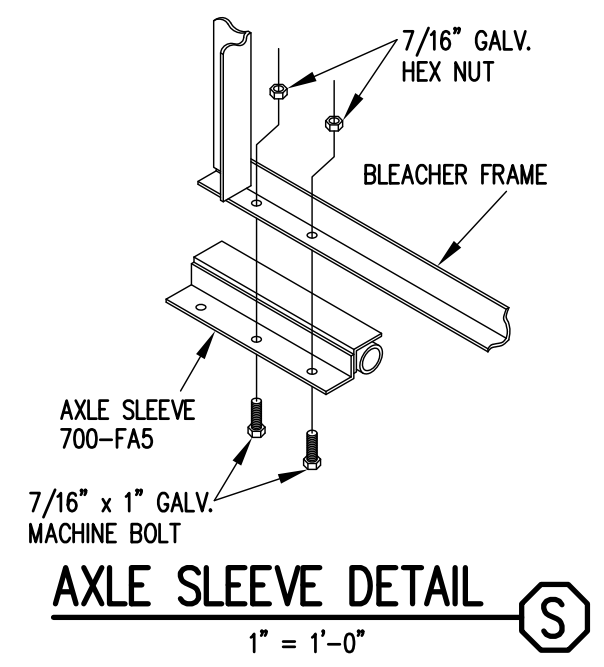
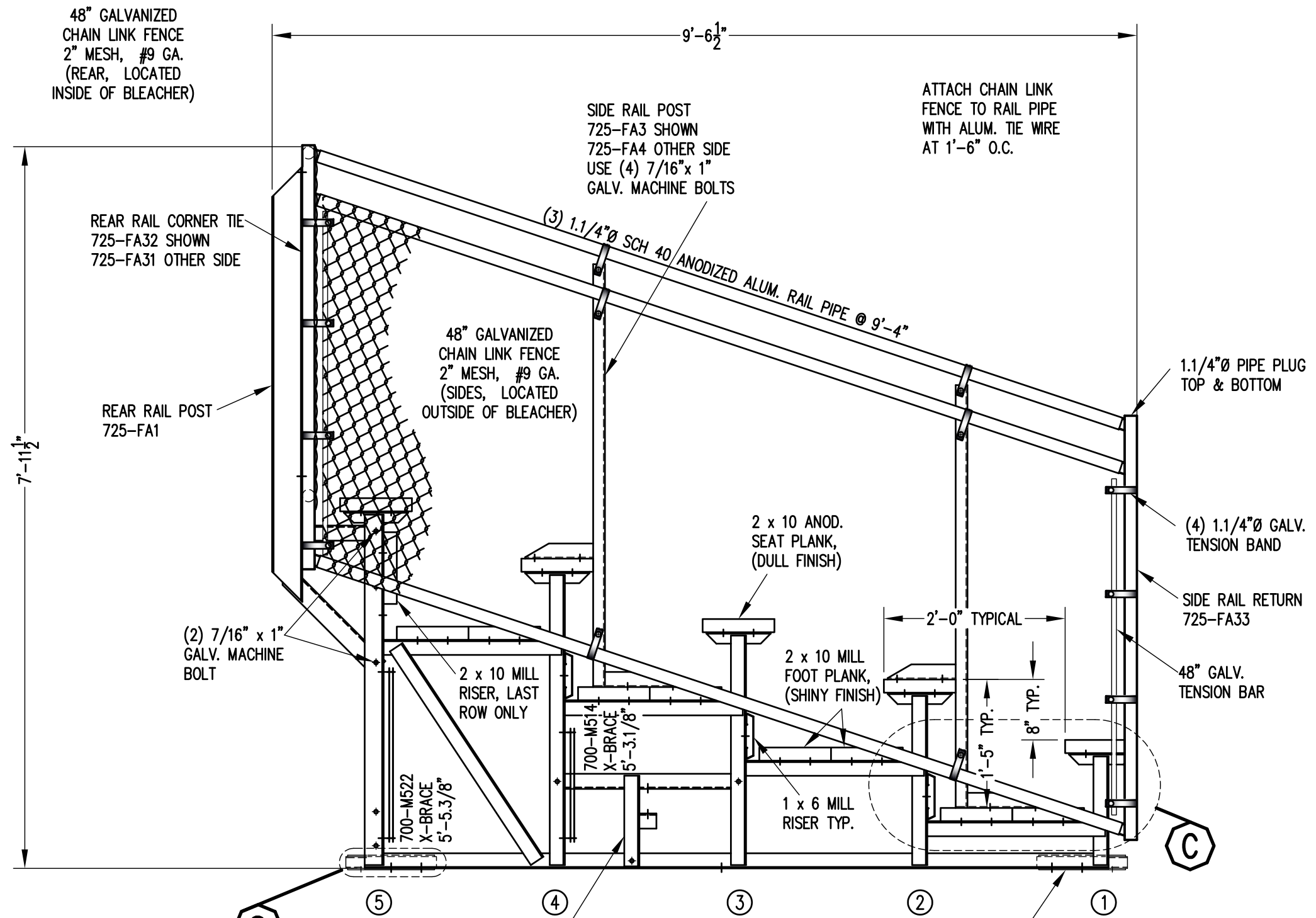


VIEW DD

N.T.S.

700-FA3 - ATTACH WITH (4) 7/16" x 1" GALV. MACH. BOLT

		Outdoor Aluminum P.O. BOX 118 GENEVA, ALABAMA 36340 334-684-2296	
DATE 11/2/11			
DR'N GPK	CKD		
AP'VD			
TITLE			NO.
TDLW 5-15 SEATING/FRAMING PLAN W/ END AISLE			784-E2064



S

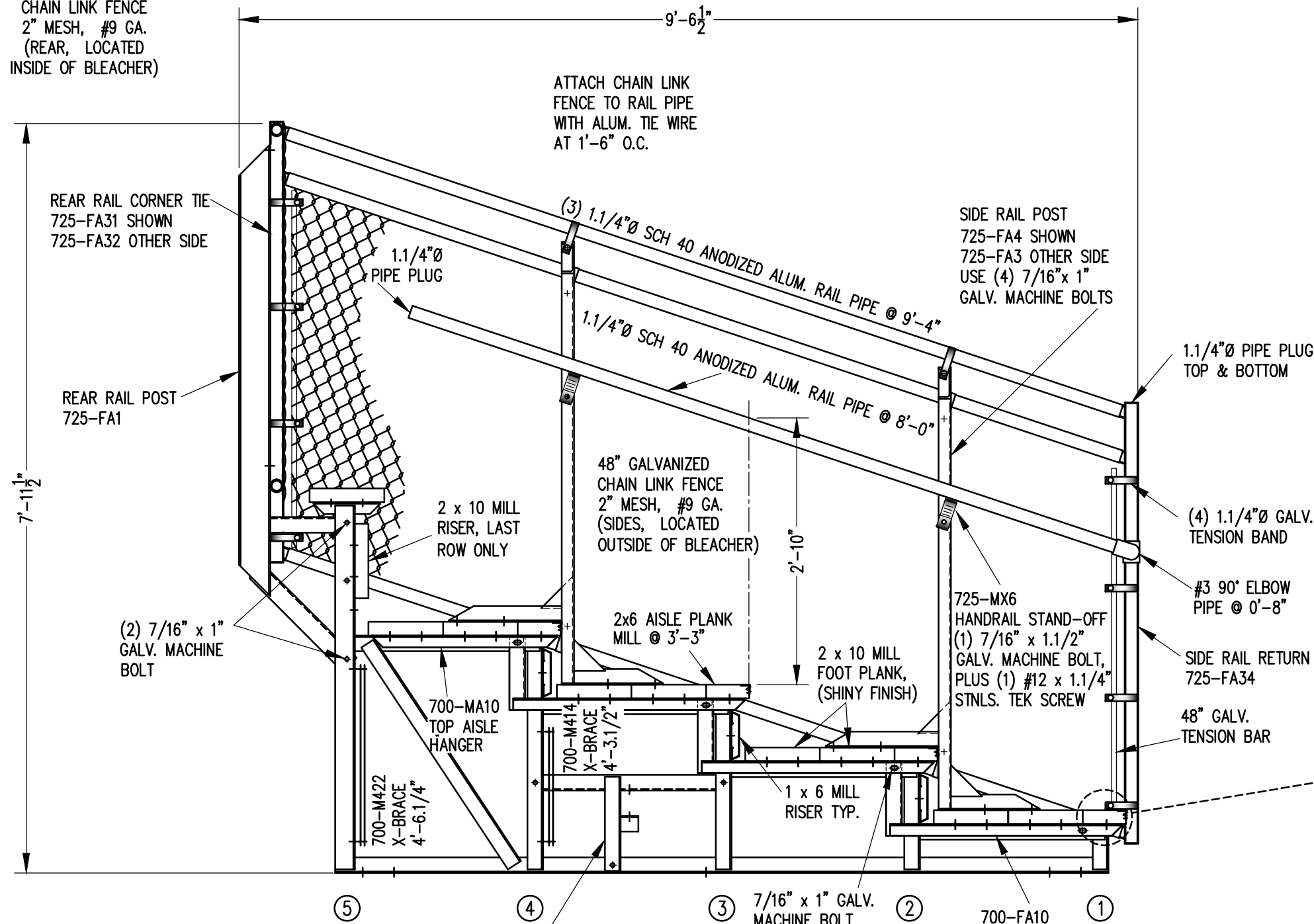
'T' TONGUE GUIDE
700-FA1
ATTACH W/ (3) 7/16" x 1"
GALV. MACHINE BOLTS
SEE FRAMING PLAN FOR
LOCATIONS.

VIEW AA
3/4" = 1'-0"

AXLE SLEEVE
700-FA5
ATTACH W/ (2) 7/16" x 1"
GALV. MACHINE BOLTS
SEE FRAMING PLAN FOR
LOCATIONS.

		P.O. BOX 118 GENEVA, ALABAMA 36340 334-684-2296		
		SCALE	AS NOTED	REVISIONS
DATE	11/2/11			
DR'N	ADK	CKD		
AP'VD				
TITLE	TDLW 5 ROW VIEW (15'-0" W/ END AISLE)			NO. 784-E2087

48" GALVANIZED
CHAIN LINK FENCE
2" MESH, #9 GA.
(REAR, LOCATED
INSIDE OF BLEACHER)



ATTACH CHAIN LINK
FENCE TO RAIL PIPE
WITH ALUM. TIE WIRE
AT 1'-6" O.C.

SIDE RAIL POST
725-FA4 SHOWN
725-FA3 OTHER SIDE
USE (4) 7/16" x 1"
GALV. MACHINE BOLTS

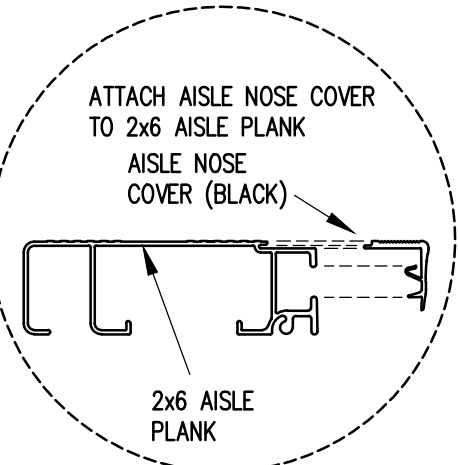
1.1/4"Ø PIPE PLUG
TOP & BOTTOM

(4) 1.1/4"Ø GALV.
TENSION BAND

#3 90° ELBOW
PIPE @ 0'-8"

SIDE RAIL RETURN
725-FA34

48" GALV.
TENSION BAR



(2) 7/16" x 1"
GALV. MACHINE
BOLT

REAR RAIL CORNER TIE
725-FA31 SHOWN
725-FA32 OTHER SIDE

REAR RAIL POST
725-FA1

2 x 10 MILL
RISER, LAST
ROW ONLY

48" GALVANIZED
CHAIN LINK FENCE
2" MESH, #9 GA.
(SIDES, LOCATED
OUTSIDE OF BLEACHER)

2x6 AISLE PLANK
MILL @ 3'-3"

2 x 10 MILL
FOOT PLANK,
(SHINY FINISH)

725-MX6
HANDRAIL STAND-OFF
(1) 7/16" x 1.1/2"
GALV. MACHINE BOLT,
PLUS (1) #12 x 1.1/4"
STNLS. TEK SCREW

700-MA10
TOP AISLE
HANGER

700-M422
X-BRACE
4'-6.1/4"

700-M414
X-BRACE
4'-3.1/2"

1 x 6 MILL
RISER TYP.

(3) 7/16" x 1"
GALV.
MACHINE BOLT

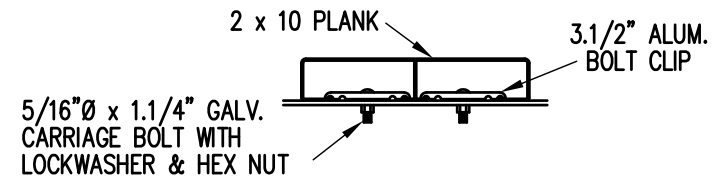
(1) 700-FA10
AISLE HANGER
TYPICAL

'I' TONGUE GUIDE
700-FA1
ATTACH W/ (3) 7/16" x 1"
GALV. MACHINE BOLTS
SEE FRAMING PLAN FOR
LOCATIONS.

SECTION BB
3/4" = 1'-0"

NOTE: ALL AISLE HANGERS - TWO PER
LOCATION REQUIRED, TYPICAL

		P.O. BOX 118 GENEVA, ALABAMA 36340 334-684-2296				
		SCALE	AS NOTED	REVISIONS	BY	DATE
DATE	11/2/11					
DR'N	CDK	CKD				
AP'VD						
TITLE	TDLW 5 ROW SECTION (15'-0" W/ END AISLE)			NO.	784-E2088	



BOLT CLIP DETAIL

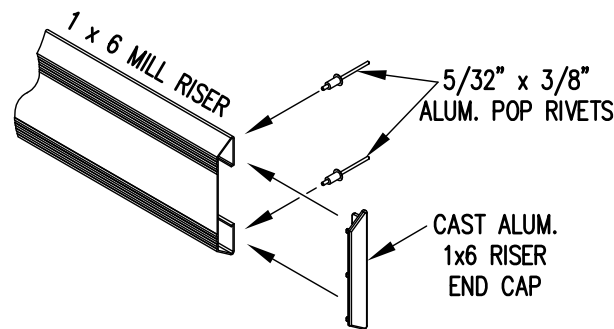
1.1/2" = 1'-0"



- 1) LOCATE THE CHANNEL END CAP AS SHOWN IN FIG. 1.
- 2) TAP END CAP INTO PLACE WITH RUBBER Mallet OR SOFT WOOD. FIG.2
- 3) DRILL 5/32" HOLES THROUGH THE BOTTOM FLANGE AND THE BOTTOM OUTSIDE PLANK FLANGES OF EACH PLANK. INSTALL 5/32" POP RIVETS.

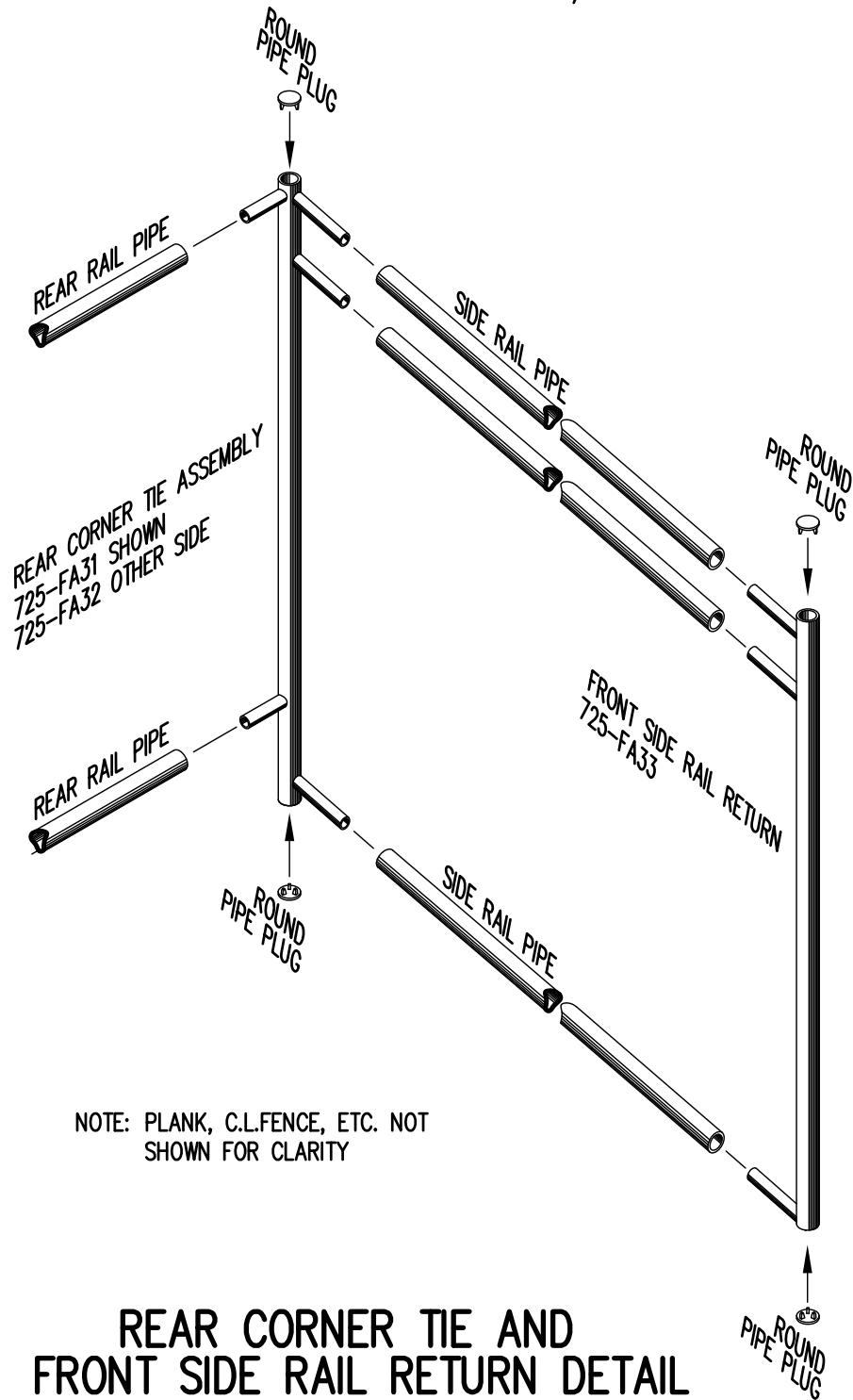
END CAP DETAIL

N.T.S.



1 x 6 RISER END CAP

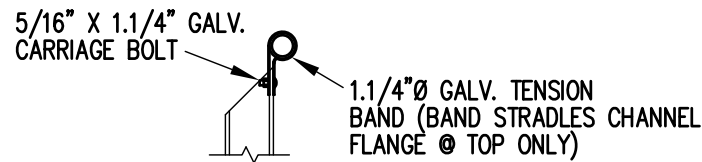
N.T.S.



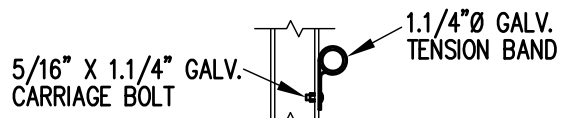
REAR CORNER TIE AND FRONT SIDE RAIL RETURN DETAIL

3/4" = 1'-0"

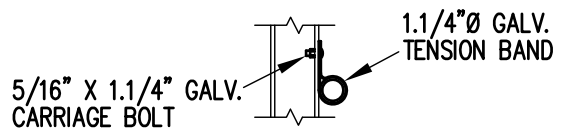
NOTE: PLANK, C.L.FENCE, ETC. NOT SHOWN FOR CLARITY



TOP RAIL

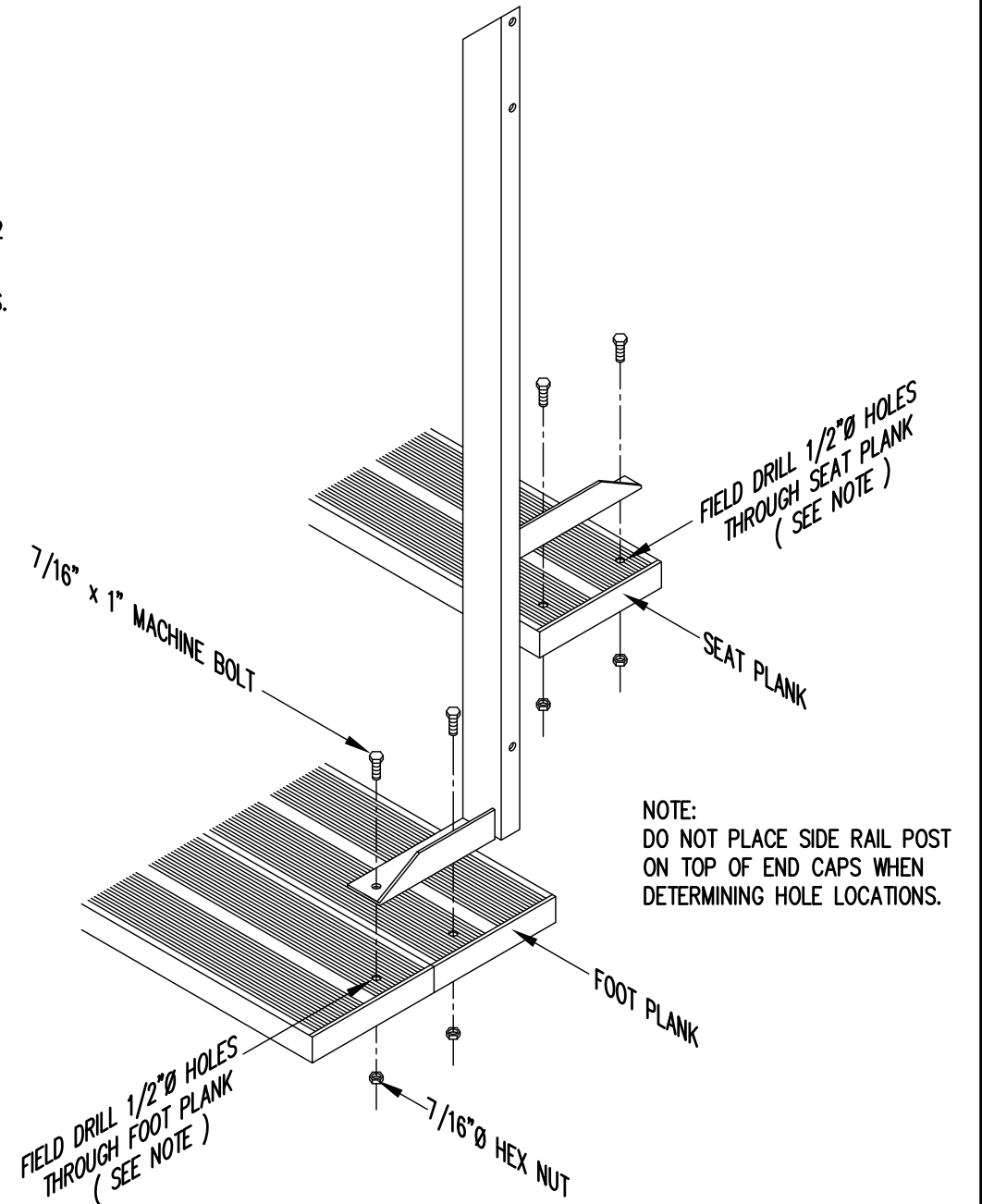


2ND RAIL



BOTTOM RAIL

RAIL PIPE ATTACHMENT

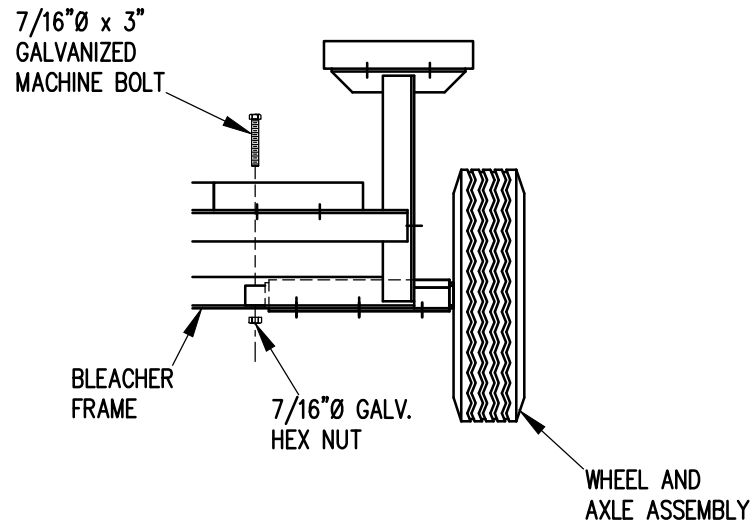
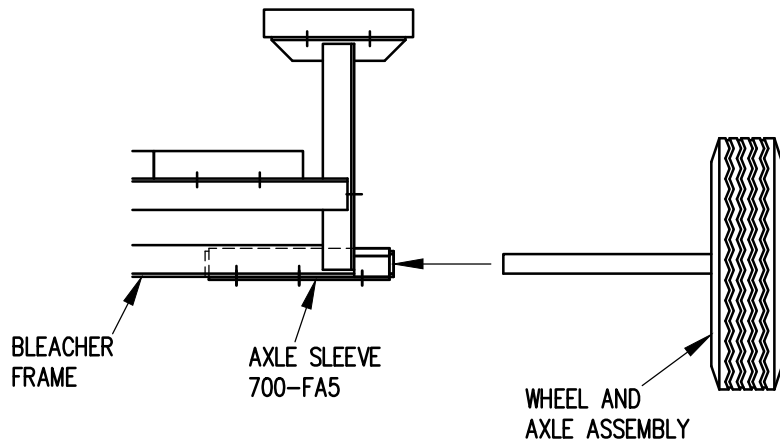


TYP. SIDE RAIL POST ATTACHMENT

1" = 1'-0"

NOTE: DO NOT PLACE SIDE RAIL POST ON TOP OF END CAPS WHEN DETERMINING HOLE LOCATIONS.

		P.O. BOX 118 GENEVA, ALABAMA 36340 334-684-2296			
		SCALE	AS NOTED	REVISIONS	BY
DATE	11/2/11				
DR'N	ADK	CKD			
AP'VD					
TITLE				NO.	
TYPICAL DETAILS				784-E1990	

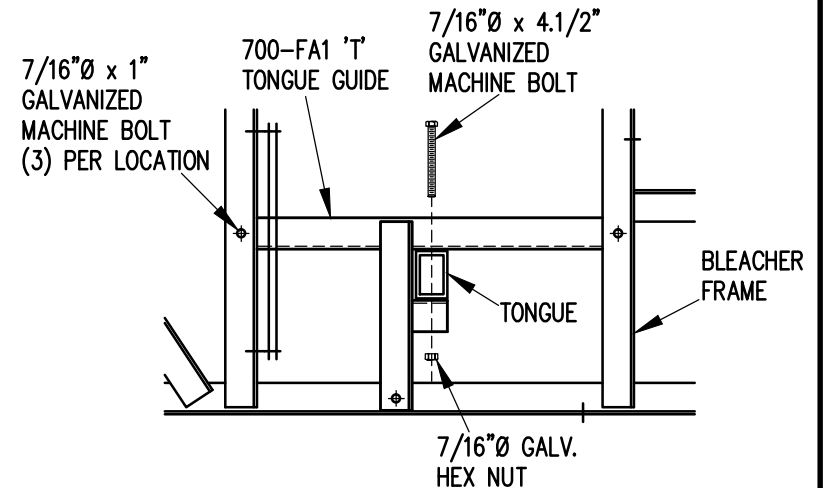


1. ELEVATE BLEACHER TO RECEIVE WHEEL UNITS.
2. INSERT WHEEL AND AXLE ASSEMBLY INTO AXLE SLEEVE AS SHOWN.
3. INSERT 7/16" X 3" GALVANIZED MACHINE BOLT THROUGH AXLE TO SECURE IN AXLE SLEEVE.

WHEEL AND AXLE ATTACHMENT

1" = 1'-0"

NOTE: SEE FRAMING PLAN FOR LOCATION OF AXLE SLEEVES AND TONGUE GUIDES.



1. INSERT TONGUE THROUGH TONGUE GUIDES.
2. ATTACH TONGUE TO TONGUE BRACKETS WITH 7/16" X 4.1/2" GALVANIZED MACHINE BOLTS AS SHOWN.
3. TIGHTEN SECURELY.

TONGUE ATTACHMENT

1" = 1'-0"

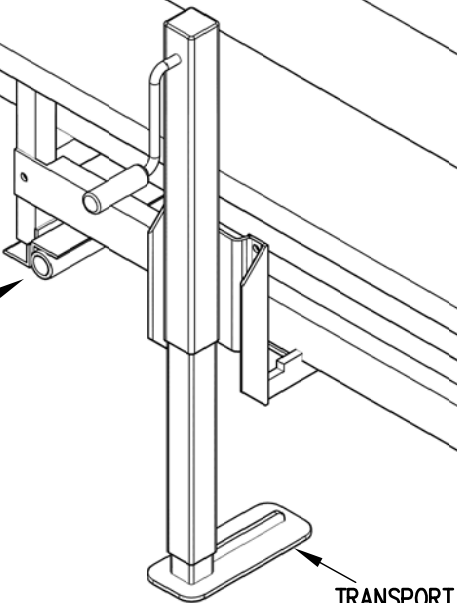
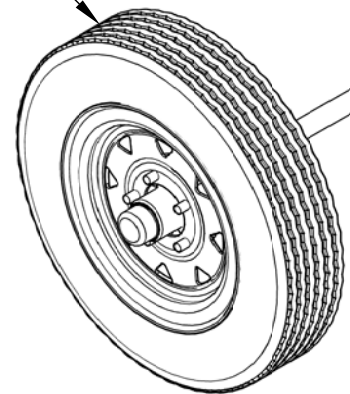


Outdoor
Aluminum

P.O. BOX 118
GENEVA, ALABAMA 36340
334-684-2296

SCALE	REVISIONS	BY	DATE
1"=1'-0"			
DATE			
DR'N	ADK	CKD	
AP'VD			
TITLE	NO.		
1-5 AND 6-10 ROW TRANSPORT COMPONENTS ATTACHMENT DETAILS	784-E1991		

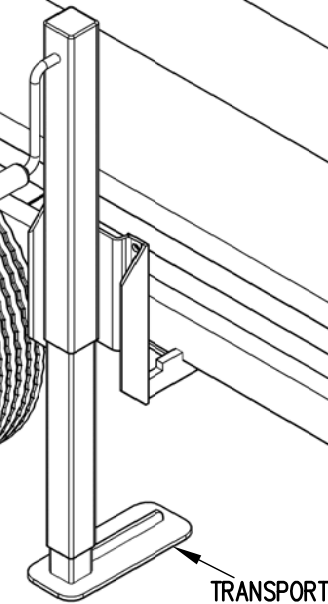
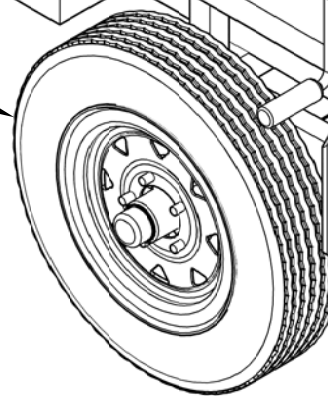
WHEEL AND AXLE ASSEMBLY



TRANSPORT JACK

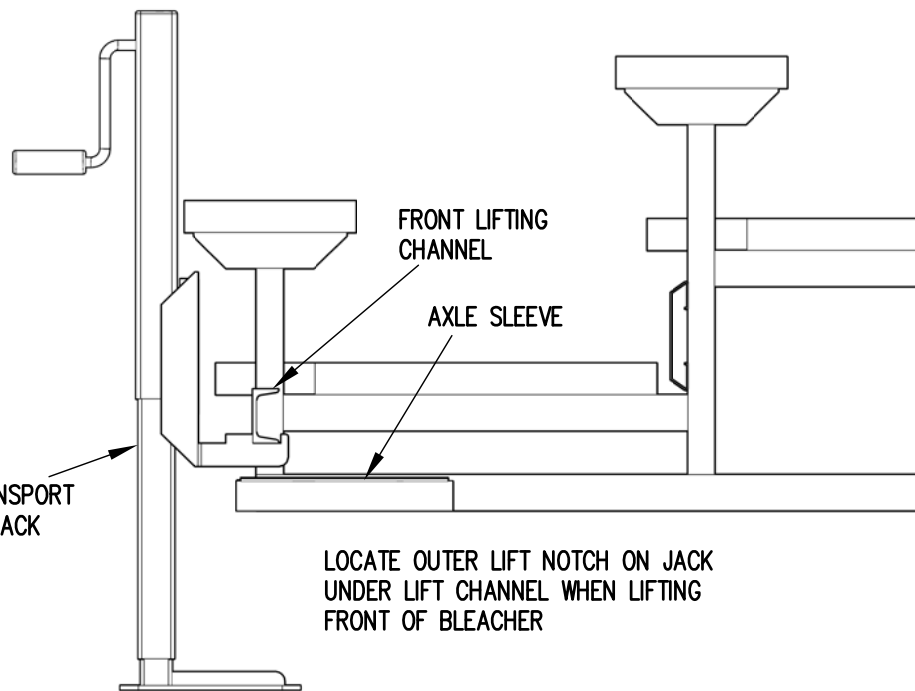
FRONT LIFTING CHANNEL

WHEEL AND AXLE ASSEMBLY

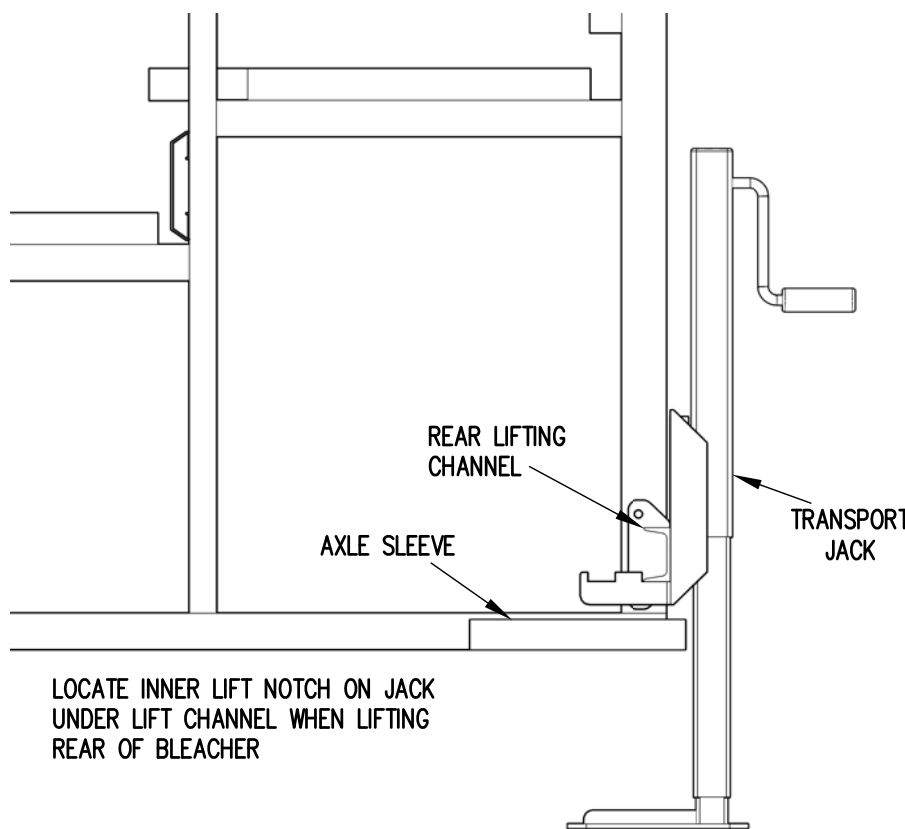


TRANSPORT JACK

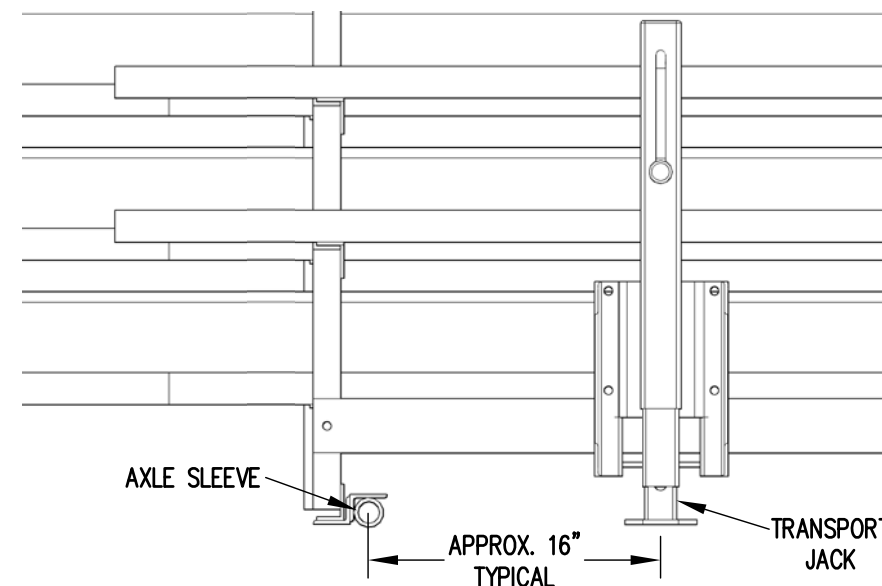
FRONT LIFTING CHANNEL



LOCATE OUTER LIFT NOTCH ON JACK UNDER LIFT CHANNEL WHEN LIFTING FRONT OF BLEACHER



LOCATE INNER LIFT NOTCH ON JACK UNDER LIFT CHANNEL WHEN LIFTING REAR OF BLEACHER



Outdoor Aluminum

P.O. BOX 118
GENEVA, ALABAMA 36340
334-684-2296

SCALE	N.T.S.	REVISIONS	BY	DATE
DATE	10/16/14			
DR'N	ADK CKD			
AP'VD	ADK			
TITLE	1-5 AND 6-10 ROW TRANSPORT JACK PLACEMENT			NO. 784-E1992