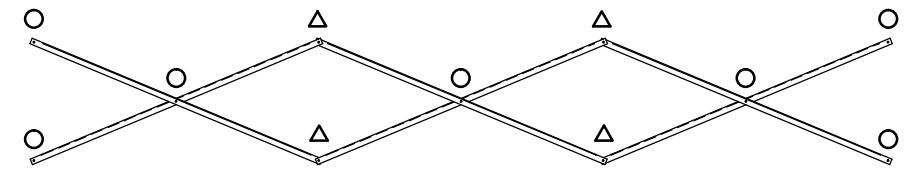


### SEATING & FRAMING PLAN

1/4" = 1'-0"  
54 NET SEATS @ 18" PER SEAT

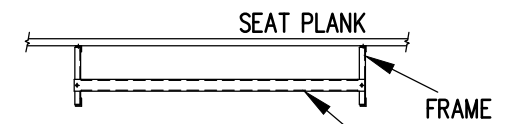
- DENOTES AXLE SLEEVE LOCATIONS
- ▷ DENOTES TONGUE GUIDE LOCATIONS



### X-BRACE DETAIL

N.T.S.

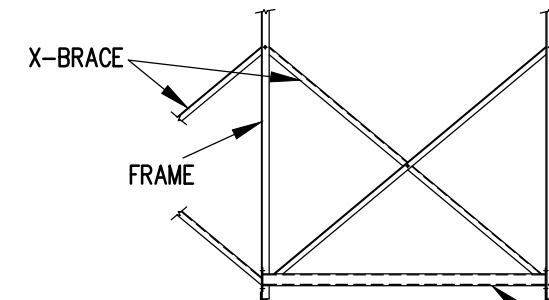
- 7/16" X 1" GALV. MACH. BOLT
- △ 7/16" X 1.1/2" GALV. MACH. BOLT



### VIEW CC

N.T.S.

700-MC100 - ATTACH WITH (2) 7/16" x 1" GALV. MACH. BOLT.

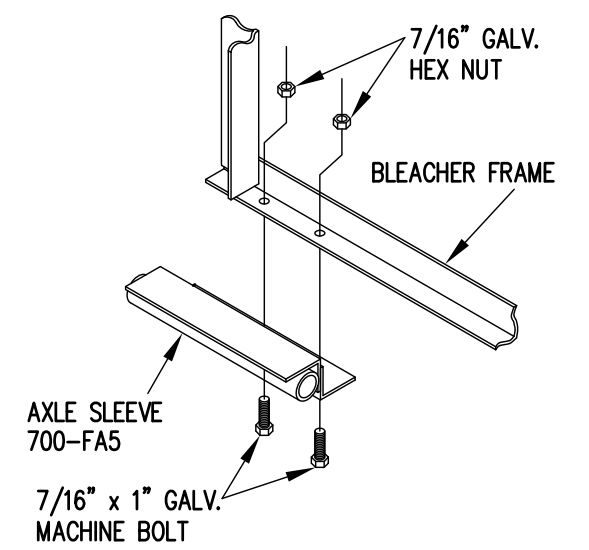
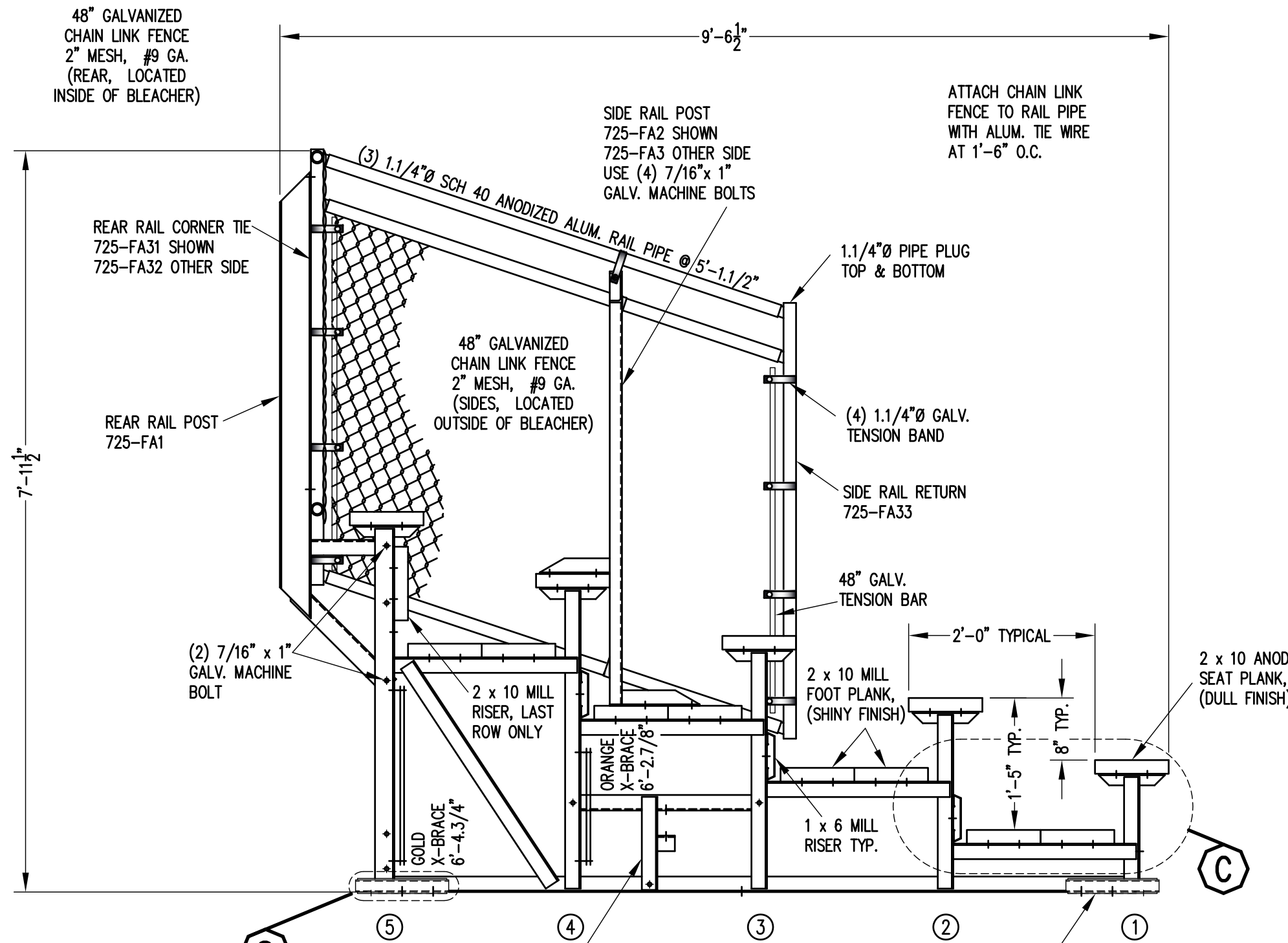


### VIEW DD

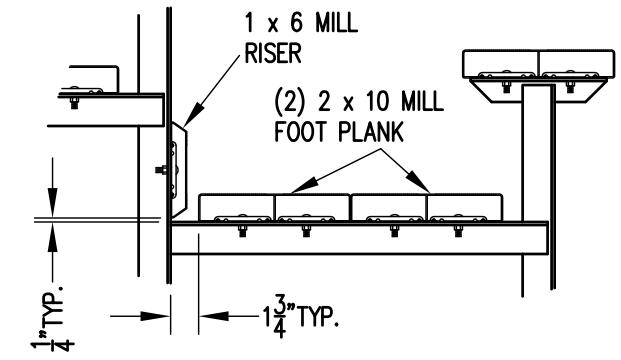
N.T.S.

700-FA4 - ATTACH WITH (4) 7/16" x 1" GALV. MACH. BOLT

		P.O. BOX 118 GENEVA, ALABAMA 36340 334-684-2296	
SCALE	AS NOTED	REVISIONS	BY DATE
DATE	11/2/11		
DR'N	CDK CKD		
AP'VD			
TITLE			NO.
TDLW 5-21 SEATING/FRAMING PLAN			784-E2069



**AXLE SLEEVE DETAIL S**  
1" = 1'-0"



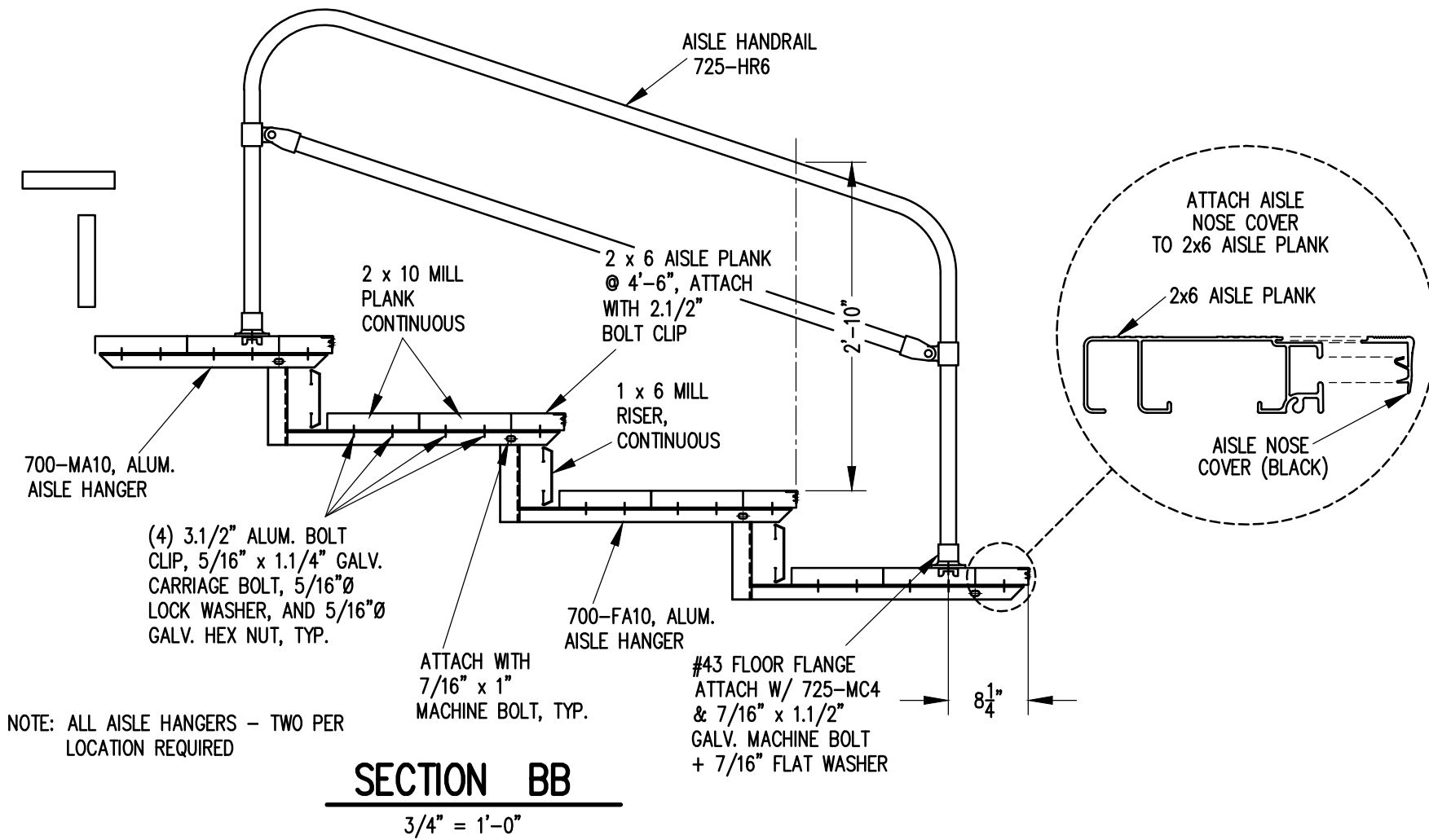
**DETAIL C**  
1" = 1'-0"

'T' TONGUE GUIDE 700-FA1 ATTACH W/ (3) 7/16" x 1" GALV. MACHINE BOLTS SEE FRAMING PLAN FOR LOCATIONS.


AXLE SLEEVE 700-FA5 ATTACH W/ (2) 7/16" x 1" GALV. MACHINE BOLTS SEE FRAMING PLAN FOR LOCATIONS.

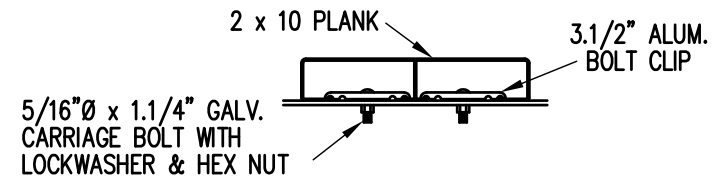
**SECTION AA**  
3/4" = 1'-0"

		P.O. BOX 118 GENEVA, ALABAMA 36340 334-684-2296		
		SCALE AS NOTED	REVISIONS	BY
DATE 11/2/11	DR'N <i>ADK</i> CKD	AP'VD	TITLE	NO.
TDLW 5 ROW SECTION (21' TRANSPORTABLE ONLY)			784-E2089	



NOTE: ALL AISLE HANGERS - TWO PER LOCATION REQUIRED

		<b>Outdoor Aluminum</b>		P.O. BOX 118 GENEVA, ALABAMA 36340 334-684-2296	
				SCALE	REVISIONS
3/4" = 1'-0"					
DATE					
11/2/11					
DR'N					
GDK CKD					
AP'VD					
TITLE				NO.	
DLW 5 ROW AISLE SECTION				784-E1995	



**BOLT CLIP DETAIL**

1.1/2" = 1'-0"



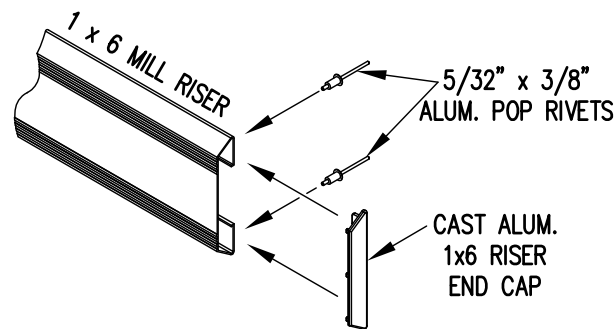
FIG.1

FIG.2

- 1) LOCATE THE CHANNEL END CAP AS SHOWN IN FIG. 1.
- 2) TAP END CAP INTO PLACE WITH RUBBER Mallet OR SOFT WOOD. FIG.2
- 3) DRILL 5/32" HOLES THROUGH THE BOTTOM FLANGE AND THE BOTTOM OUTSIDE PLANK FLANGES OF EACH PLANK. INSTALL 5/32" POP RIVETS.

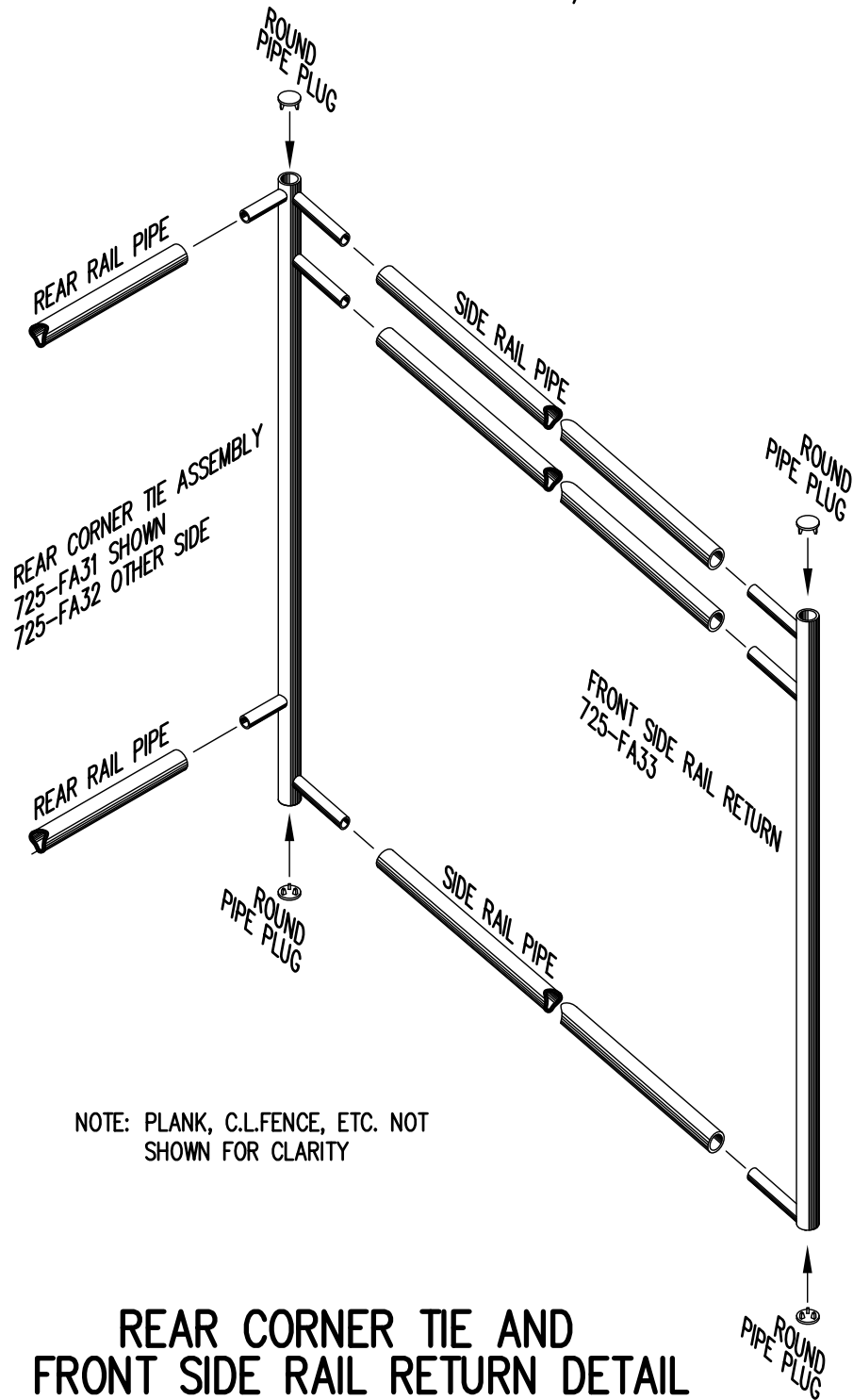
**END CAP DETAIL**

N.T.S.



**1 x 6 RISER END CAP**

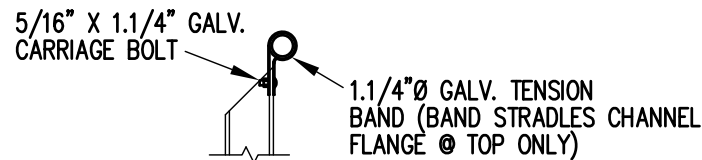
N.T.S.



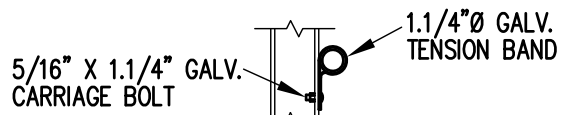
**REAR CORNER TIE AND FRONT SIDE RAIL RETURN DETAIL**

3/4" = 1'-0"

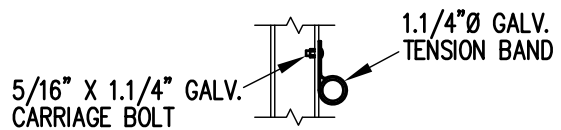
NOTE: PLANK, C.L.FENCE, ETC. NOT SHOWN FOR CLARITY



**TOP RAIL**

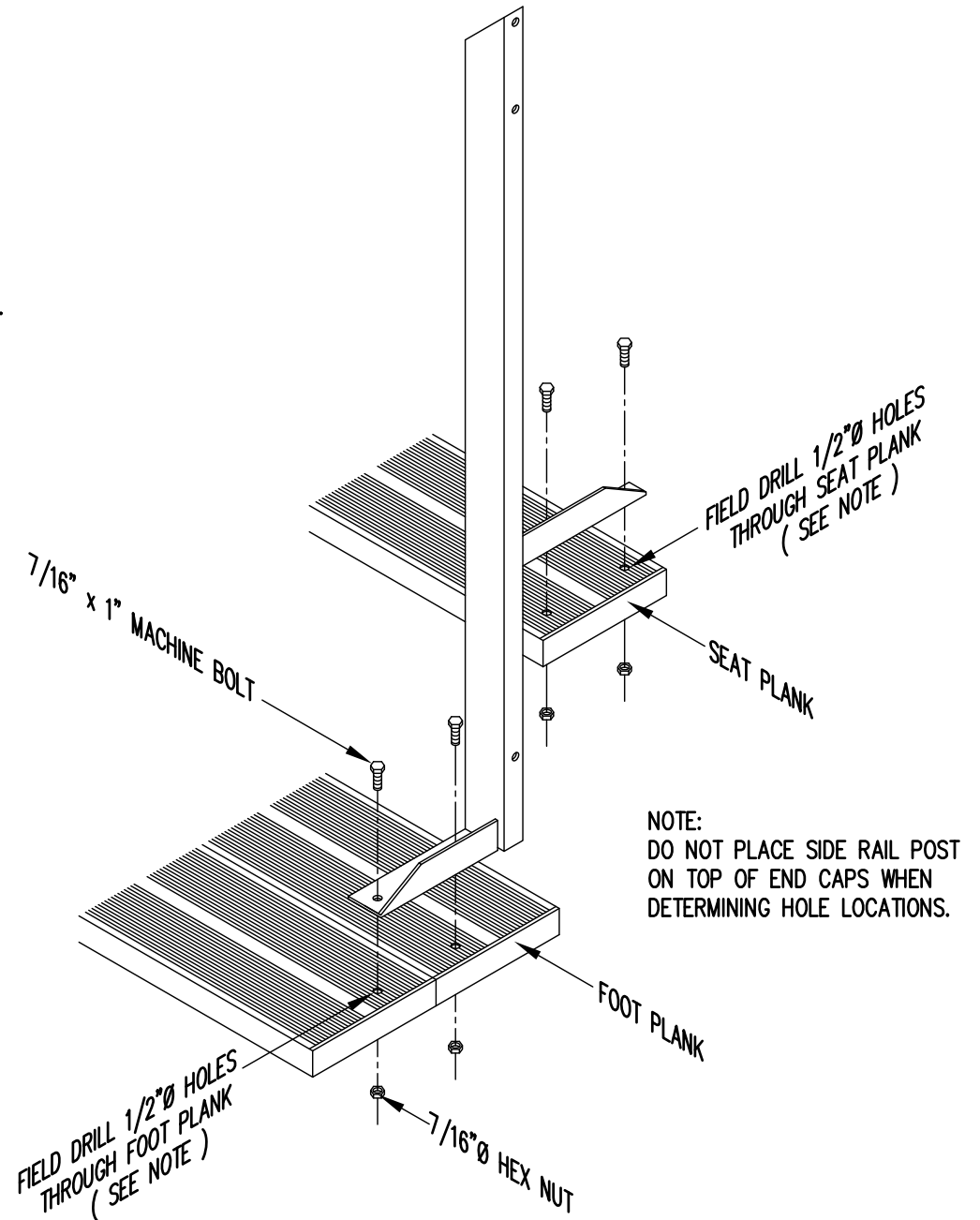


**2ND RAIL**



**BOTTOM RAIL**

**RAIL PIPE ATTACHMENT**

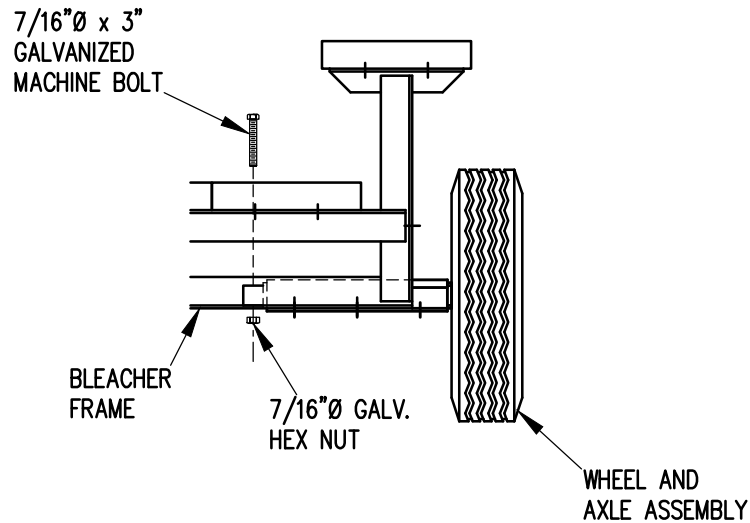
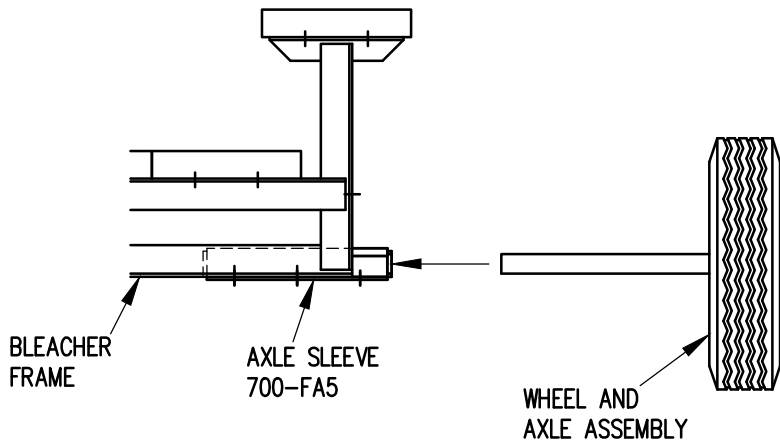


**TYP. SIDE RAIL POST ATTACHMENT**

1" = 1'-0"

NOTE: DO NOT PLACE SIDE RAIL POST ON TOP OF END CAPS WHEN DETERMINING HOLE LOCATIONS.

		<b>Outdoor Aluminum</b> P.O. BOX 118 GENEVA, ALABAMA 36340 334-684-2296				
				SCALE	AS NOTED	REVISIONS
DATE	11/2/11					
DR'N	ADK	CKD				
AP'VD						
TITLE				NO.		
TYPICAL DETAILS				784-E1990		

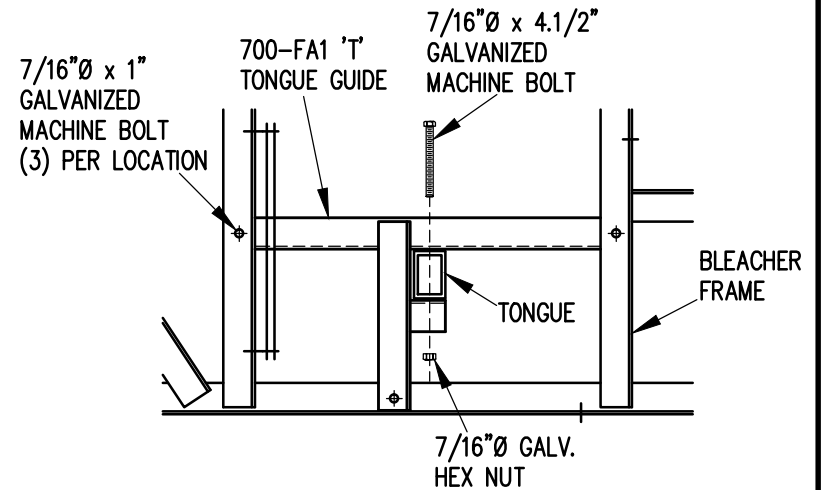


1. ELEVATE BLEACHER TO RECEIVE WHEEL UNITS.
2. INSERT WHEEL AND AXLE ASSEMBLY INTO AXLE SLEEVE AS SHOWN.
3. INSERT 7/16" X 3" GALVANIZED MACHINE BOLT THROUGH AXLE TO SECURE IN AXLE SLEEVE.

## WHEEL AND AXLE ATTACHMENT

1" = 1'-0"

NOTE: SEE FRAMING PLAN FOR LOCATION OF AXLE SLEEVES AND TONGUE GUIDES.



1. INSERT TONGUE THROUGH TONGUE GUIDES.
2. ATTACH TONGUE TO TONGUE BRACKETS WITH 7/16" X 4.1/2" GALVANIZED MACHINE BOLTS AS SHOWN.
3. TIGHTEN SECURELY.

## TONGUE ATTACHMENT

1" = 1'-0"

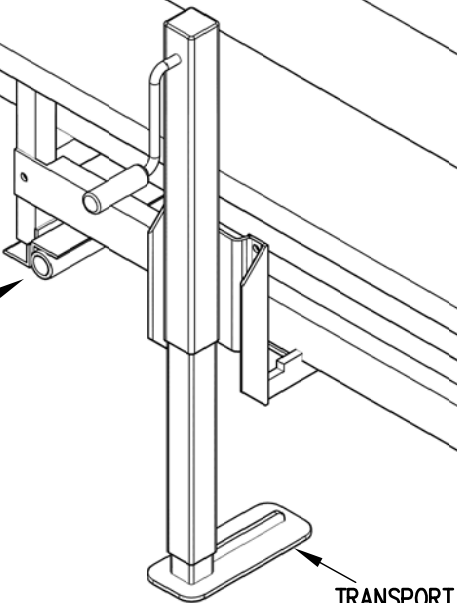
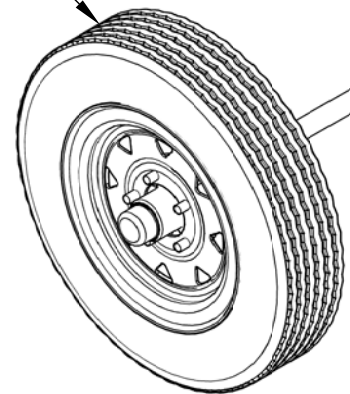


Outdoor  
Aluminum

P.O. BOX 118  
GENEVA, ALABAMA 36340  
334-684-2296

SCALE	1"=1'-0"	REVISIONS	BY	DATE
DATE	11/2/11			
DR'N	ADK	CKD		
AP'VD				
TITLE	1-5 AND 6-10 ROW TRANSPORT COMPONENTS ATTACHMENT DETAILS		NO.	784-E1991

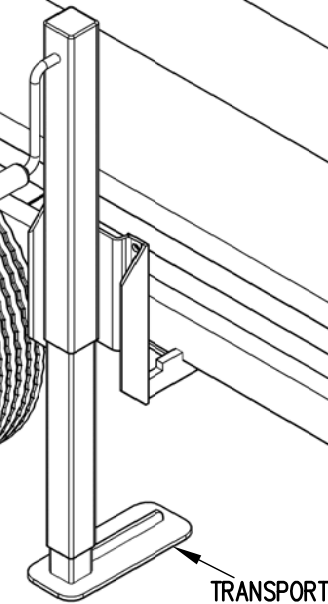
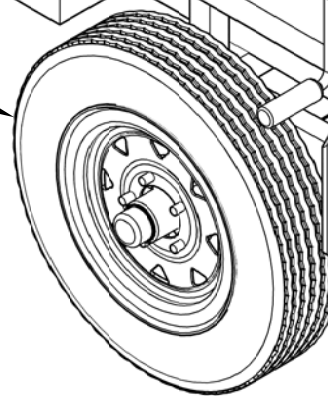
WHEEL AND AXLE ASSEMBLY



TRANSPORT JACK

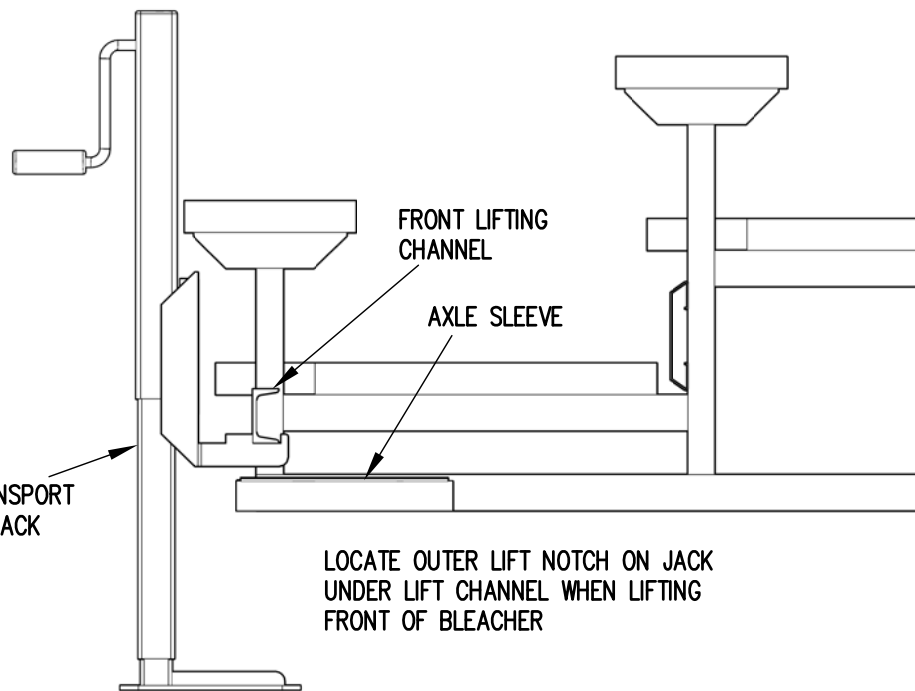
FRONT LIFTING CHANNEL

WHEEL AND AXLE ASSEMBLY



TRANSPORT JACK

FRONT LIFTING CHANNEL

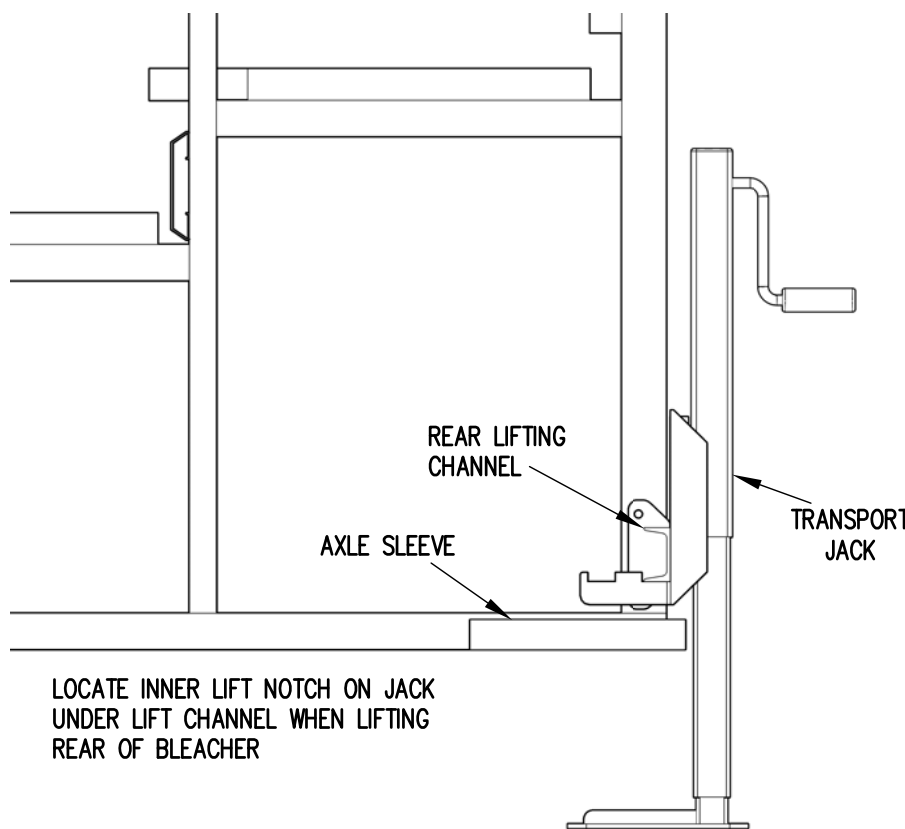


FRONT LIFTING CHANNEL

AXLE SLEEVE

TRANSPORT JACK

LOCATE OUTER LIFT NOTCH ON JACK UNDER LIFT CHANNEL WHEN LIFTING FRONT OF BLEACHER

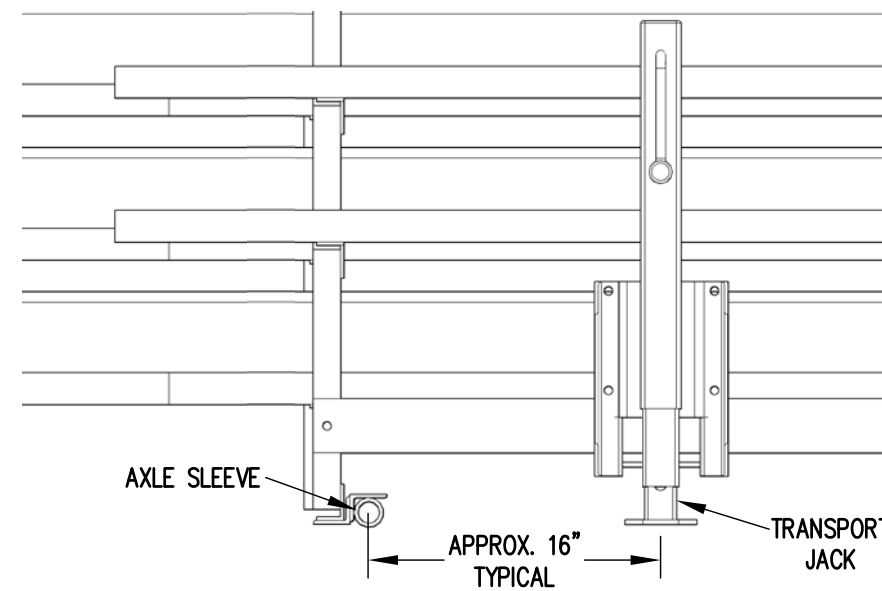


REAR LIFTING CHANNEL

AXLE SLEEVE

TRANSPORT JACK

LOCATE INNER LIFT NOTCH ON JACK UNDER LIFT CHANNEL WHEN LIFTING REAR OF BLEACHER



AXLE SLEEVE

APPROX. 16" TYPICAL

TRANSPORT JACK



Outdoor Aluminum

P.O. BOX 118  
GENEVA, ALABAMA 36340  
334-684-2296

SCALE	N.T.S.	REVISIONS	BY	DATE
DATE	10/16/14			
DR'N	ADK	CKD		
AP'VD	ADK			
TITLE	1-5 AND 6-10 ROW TRANSPORT JACK PLACEMENT			NO. 784-E1992