
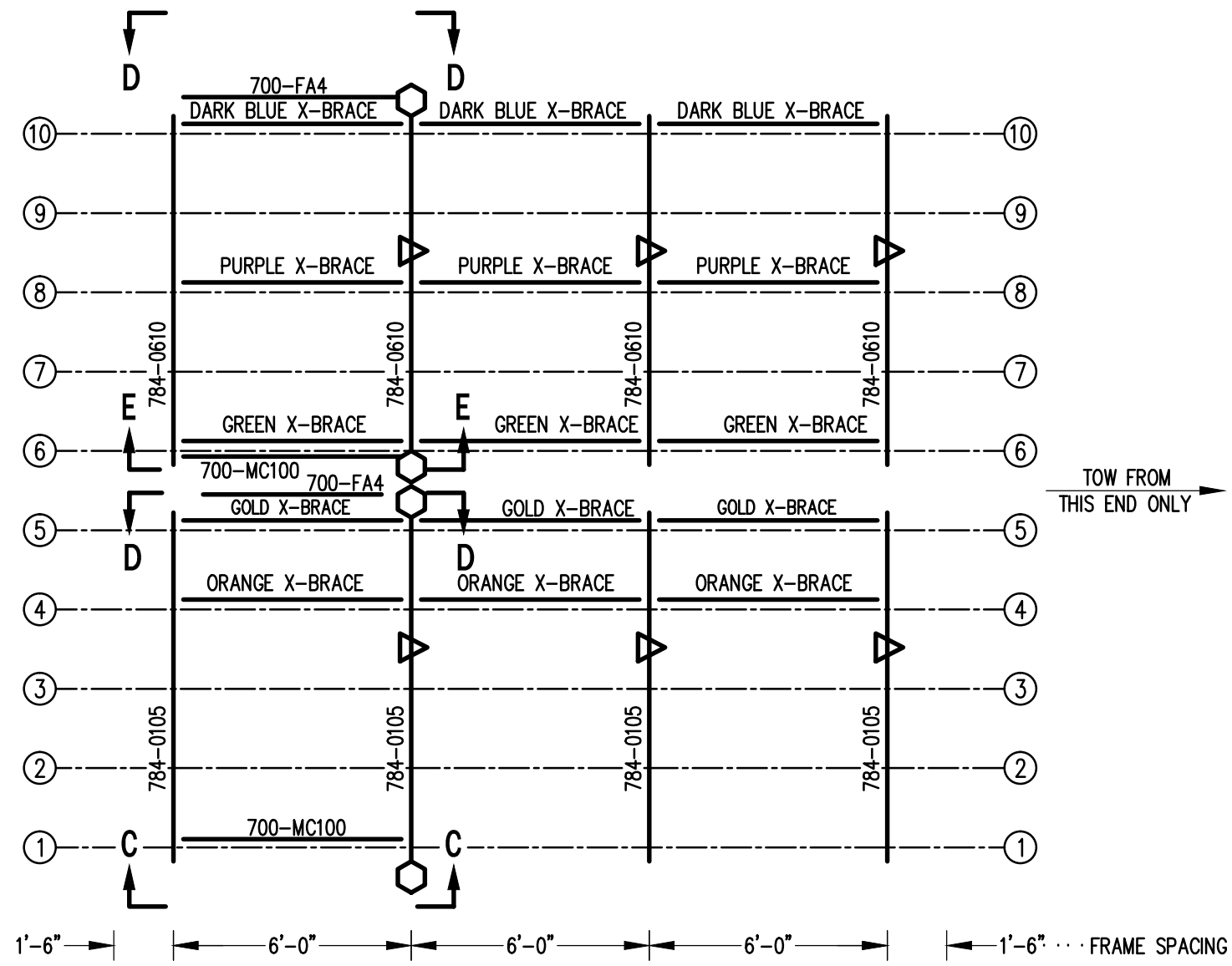


### SEATING PLAN

1/4" = 1'-0"

104 NET SEATS @ 18" PER SEAT

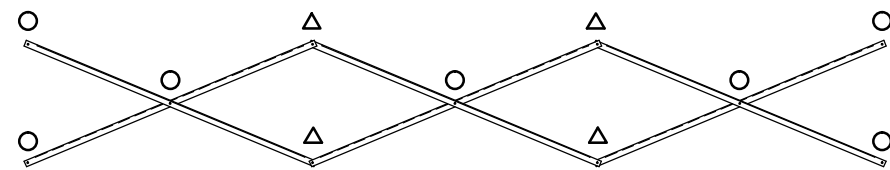
		<b>Outdoor Aluminum</b> P.O. BOX 118 GENEVA, ALABAMA 36340 334-684-2296				
				SCALE	AS NOTED	REVISIONS
DATE	11/2/11					
DR'N	CDK	CKD				
AP'VD						
TITLE					NO.	
TDLW 10-21 SEATING PLAN					784-E2109	



**FRAMING PLAN**

1/4" = 1'-0"

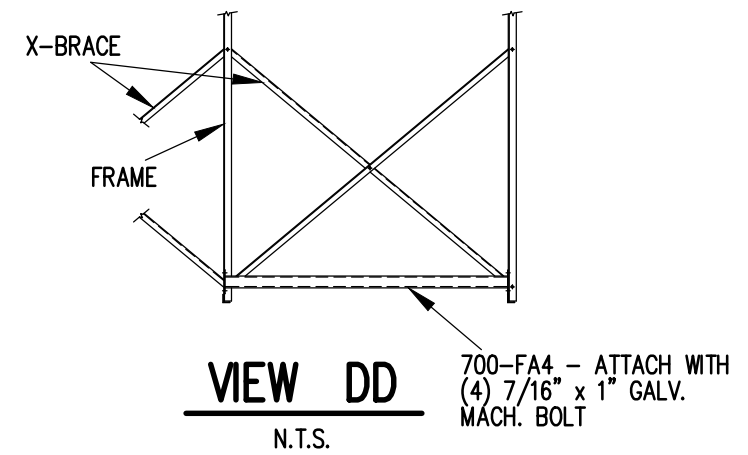
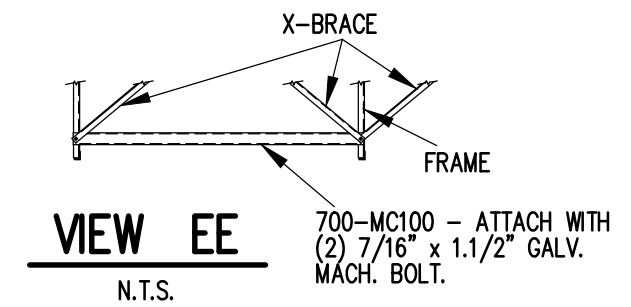
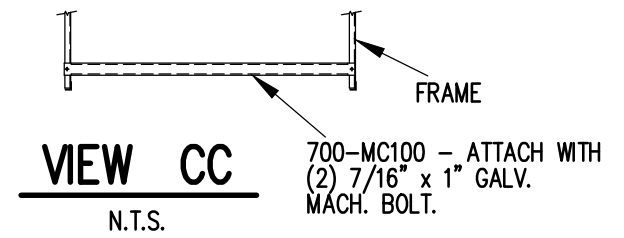
- ⬡ DENOTES AXLE SLEEVE LOCATIONS
- ▷ DENOTES TONGUE GUIDE LOCATIONS



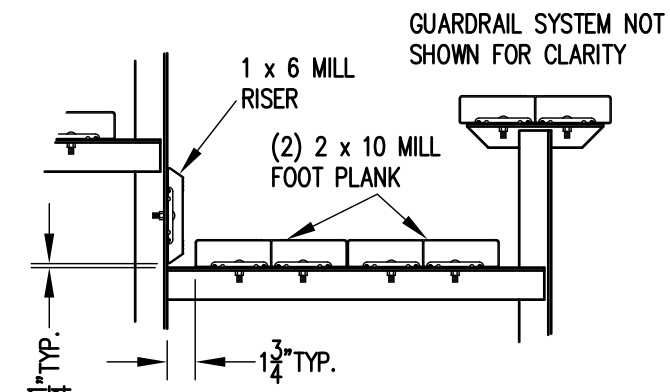
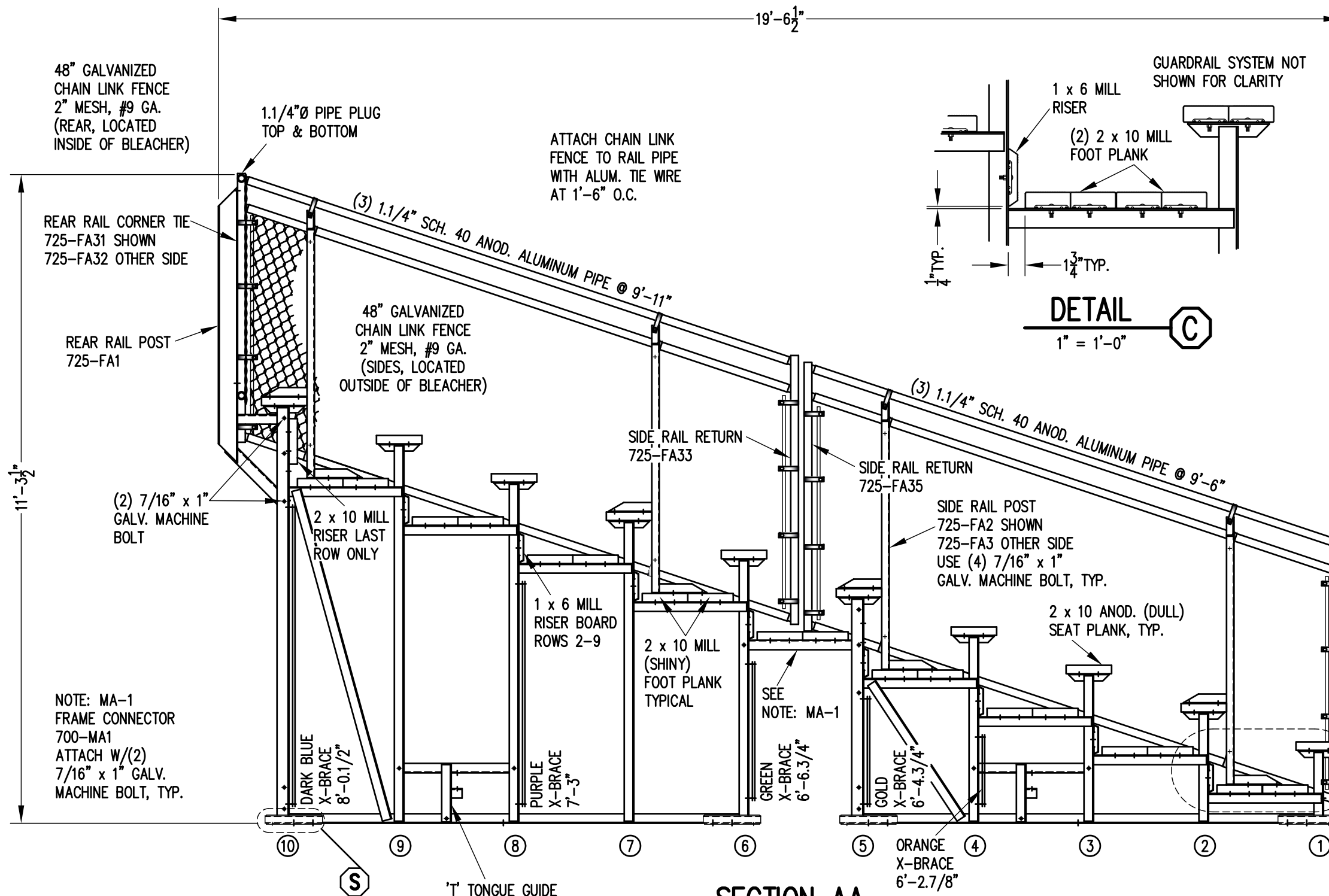
**X-BRACE DETAIL**

N.T.S.

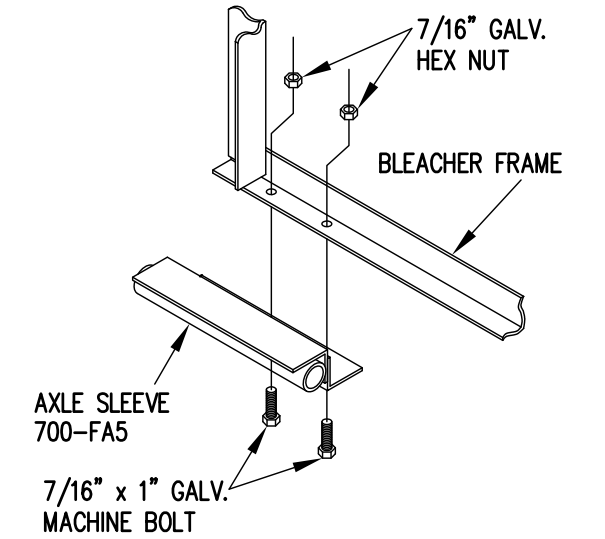
- 7/16" X 1" GALV. MACH. BOLT
- △ 7/16" X 1.1/2" GALV. MACH. BOLT



		P.O. BOX 118 GENEVA, ALABAMA 36340 334-684-2296	
		SCALE AS NOTED	REVISIONS
DATE 11/2/11			
DR'N GPK CKD			
AP'VD			
TITLE			NO.
TDLW 10-21 FRAMING PLAN			784-E2149



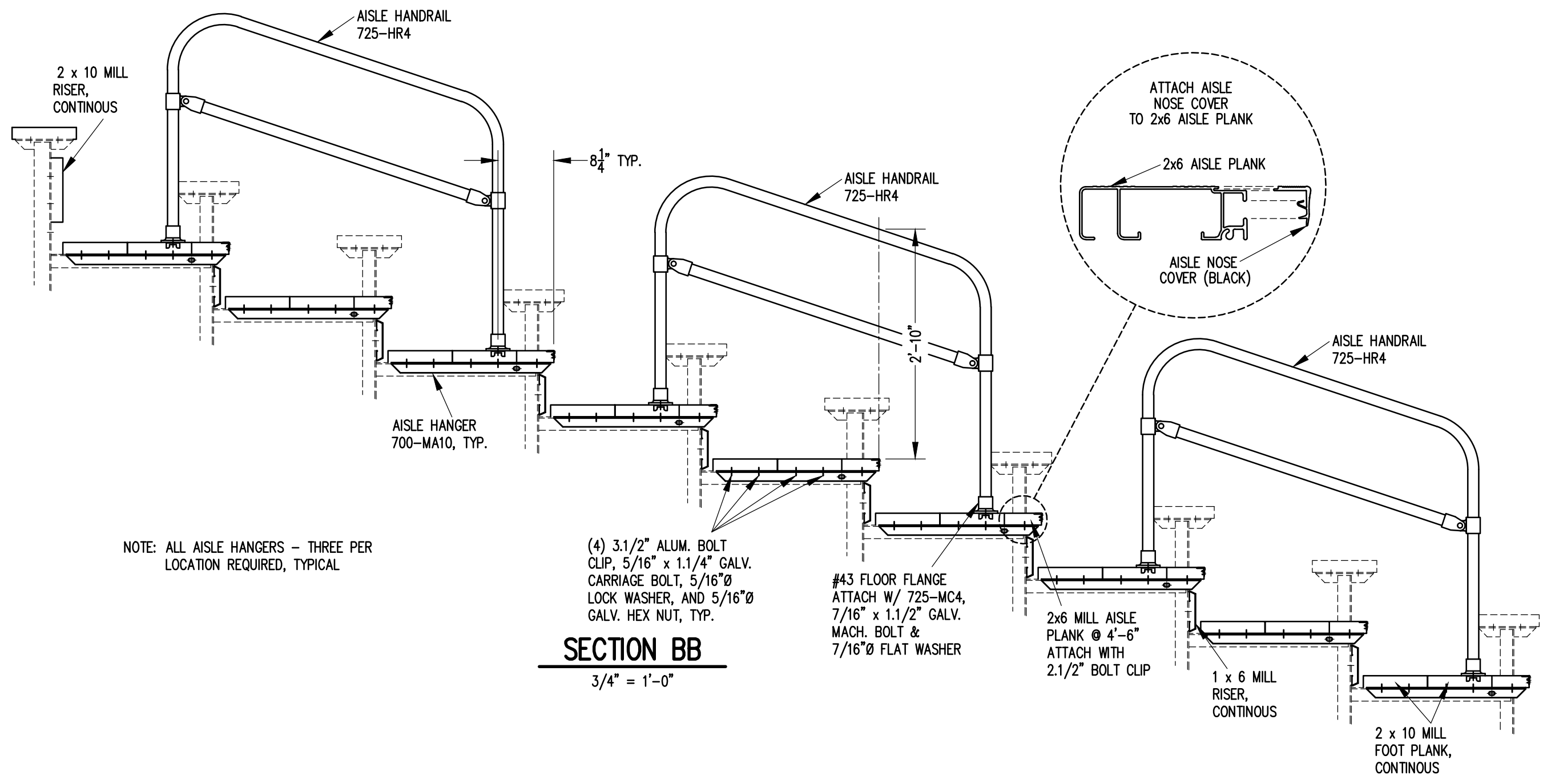
**DETAIL C**  
1" = 1'-0"




**AXLE SLEEVE DETAIL S**  
1" = 1'-0"

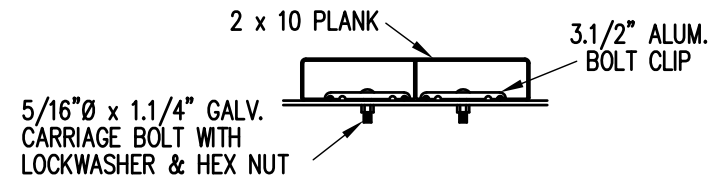
**SECTION AA**  
1/2" = 1'-0"

		P.O. BOX 118 GENEVA, ALABAMA 36340 334-684-2296			
		SCALE AS NOTED	REVISIONS	BY	DATE
DATE	11/2/11				
DR'N	ADK	CKD			
AP'VD					
TITLE				NO.	
TDLW 10 ROW SECTION				784-E2129	



**SECTION BB**  
3/4" = 1'-0"

		<b>Outdoor Aluminum</b>		P.O. BOX 118 GENEVA, ALABAMA 36340 334-684-2296	
				SCALE	REVISIONS
3/4" = 1'-0"					
DATE 11/2/11					
DR'N <i>CDK</i> CKD					
AP'VD					
TITLE				NO.	
TDLW 10 ROW AISLE SECTION				784-E1998	



**BOLT CLIP DETAIL**

1.1/2" = 1'-0"



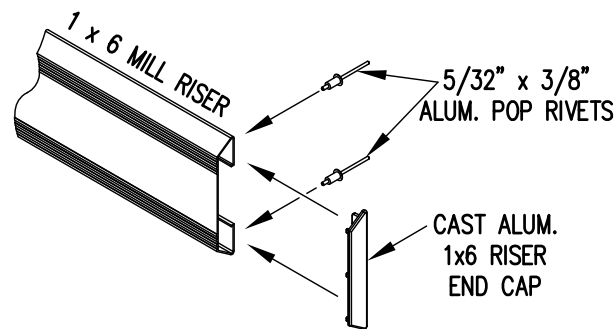
FIG.1

FIG.2

- 1) LOCATE THE CHANNEL END CAP AS SHOWN IN FIG. 1.
- 2) TAP END CAP INTO PLACE WITH RUBBER Mallet OR SOFT WOOD. FIG.2
- 3) DRILL 5/32" HOLES THROUGH THE BOTTOM FLANGE AND THE BOTTOM OUTSIDE PLANK FLANGES OF EACH PLANK. INSTALL 5/32" POP RIVETS.

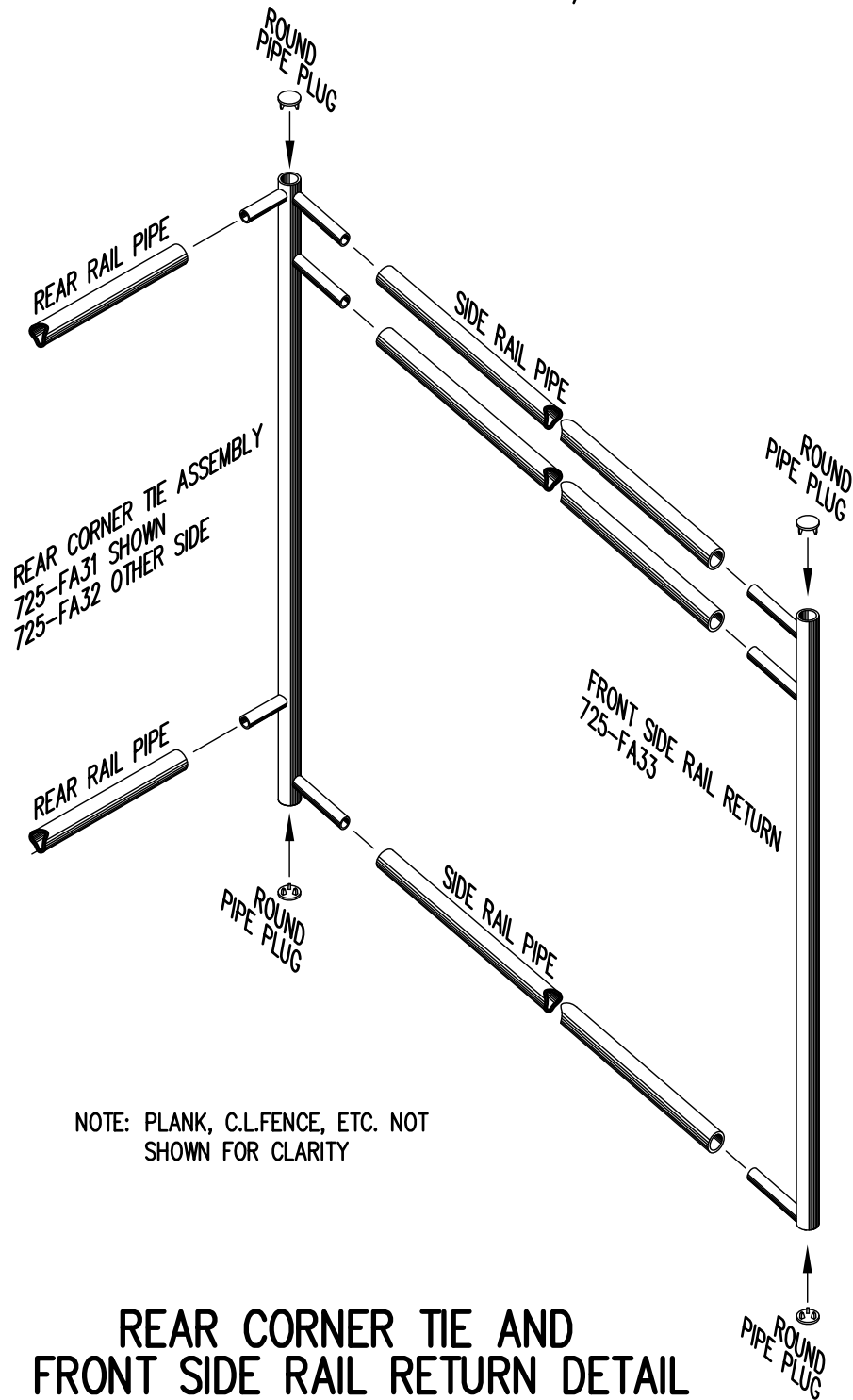
**END CAP DETAIL**

N.T.S.



**1 x 6 RISER END CAP**

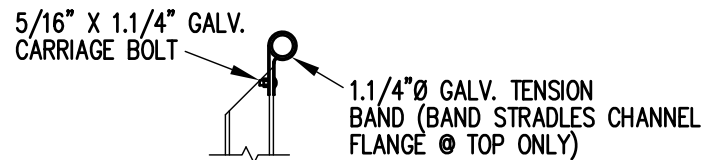
N.T.S.



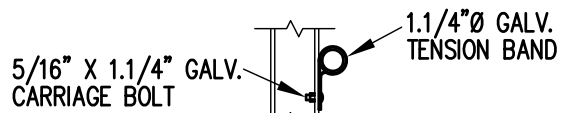
**REAR CORNER TIE AND FRONT SIDE RAIL RETURN DETAIL**

3/4" = 1'-0"

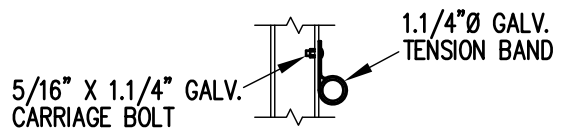
NOTE: PLANK, C.L.FENCE, ETC. NOT SHOWN FOR CLARITY



**TOP RAIL**

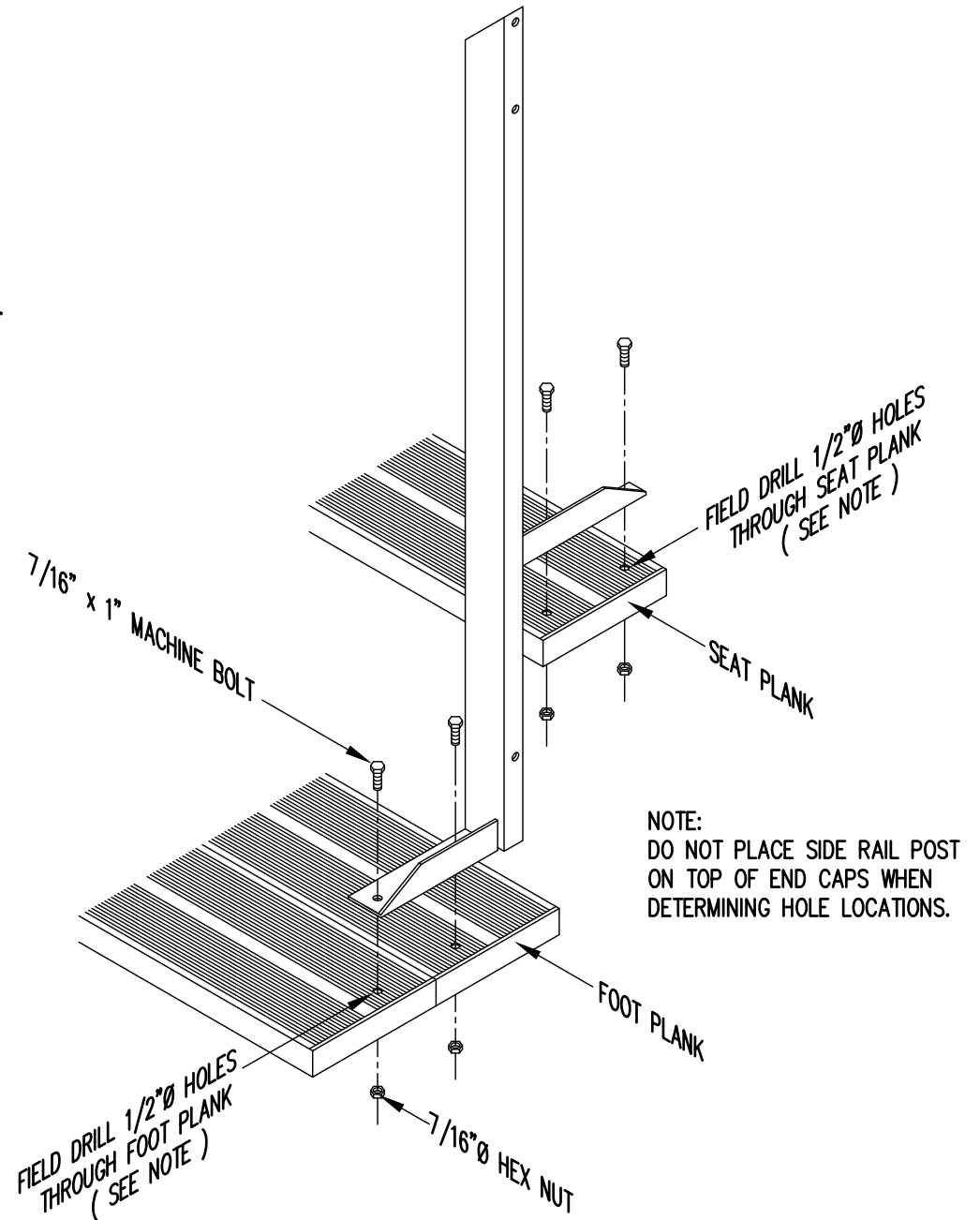


**2ND RAIL**



**BOTTOM RAIL**

**RAIL PIPE ATTACHMENT**

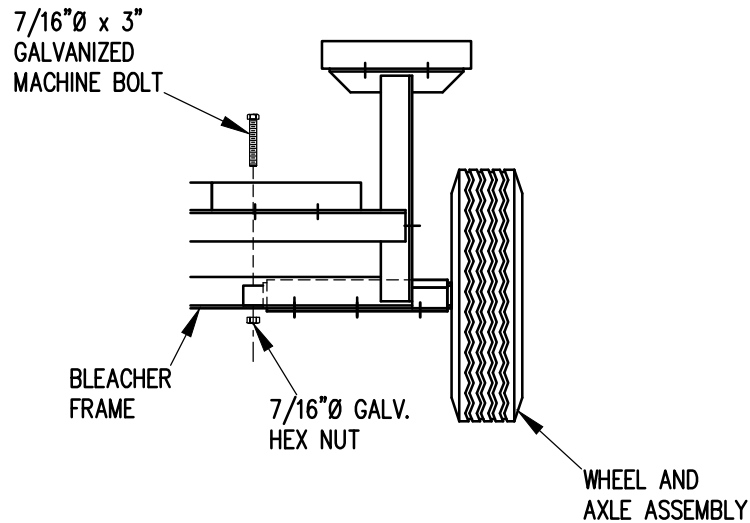
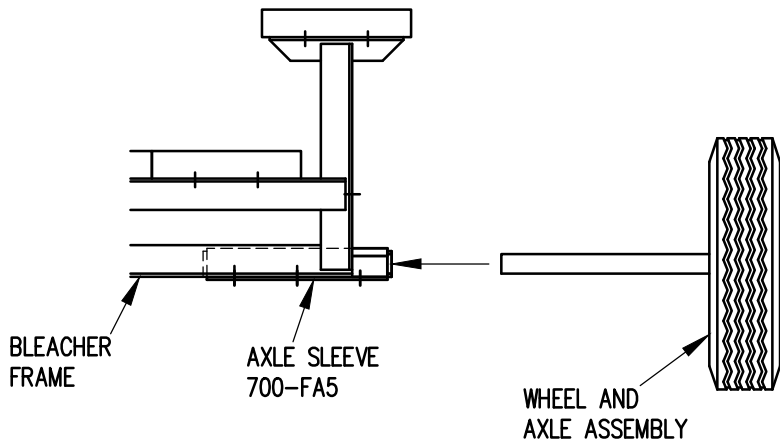


**TYP. SIDE RAIL POST ATTACHMENT**

1" = 1'-0"

NOTE: DO NOT PLACE SIDE RAIL POST ON TOP OF END CAPS WHEN DETERMINING HOLE LOCATIONS.

		P.O. BOX 118 GENEVA, ALABAMA 36340 334-684-2296			
		SCALE	AS NOTED	REVISIONS	BY
DATE	11/2/11				
DR'N	ADK	CKD			
AP'VD					
TITLE				NO.	
TYPICAL DETAILS				784-E1990	

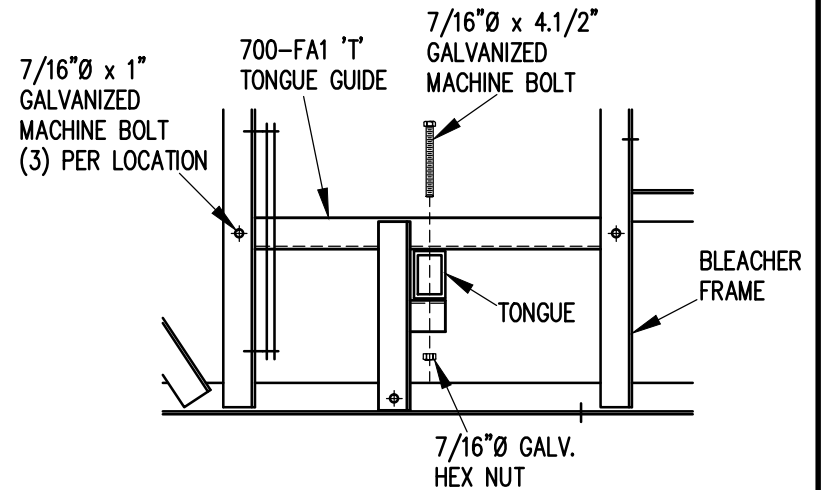


1. ELEVATE BLEACHER TO RECEIVE WHEEL UNITS.
2. INSERT WHEEL AND AXLE ASSEMBLY INTO AXLE SLEEVE AS SHOWN.
3. INSERT 7/16" X 3" GALVANIZED MACHINE BOLT THROUGH AXLE TO SECURE IN AXLE SLEEVE.

## WHEEL AND AXLE ATTACHMENT

1" = 1'-0"

NOTE: SEE FRAMING PLAN FOR LOCATION OF AXLE SLEEVES AND TONGUE GUIDES.



1. INSERT TONGUE THROUGH TONGUE GUIDES.
2. ATTACH TONGUE TO TONGUE BRACKETS WITH 7/16" X 4.1/2" GALVANIZED MACHINE BOLTS AS SHOWN.
3. TIGHTEN SECURELY.

## TONGUE ATTACHMENT

1" = 1'-0"

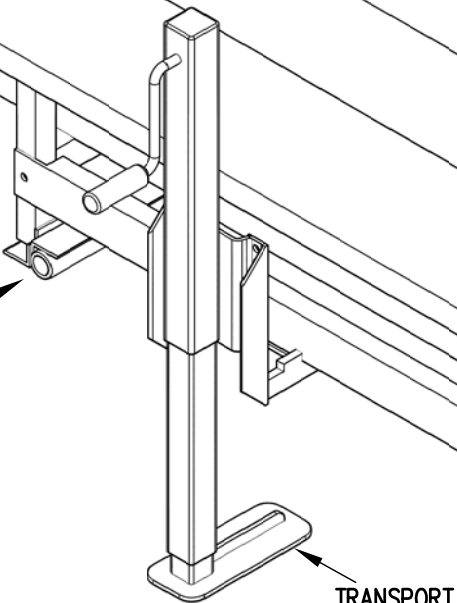
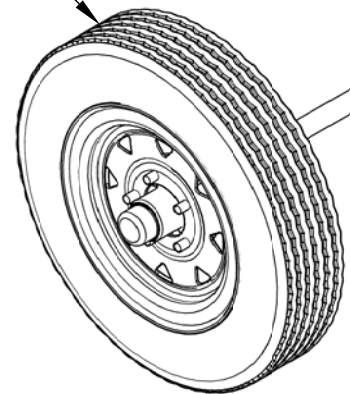


Outdoor  
Aluminum

P.O. BOX 118  
GENEVA, ALABAMA 36340  
334-684-2296

SCALE	REVISIONS	BY	DATE
1"=1'-0"			
DATE			
DR'N	ADK	CKD	
AP'VD			
TITLE	NO.		
1-5 AND 6-10 ROW TRANSPORT COMPONENTS ATTACHMENT DETAILS			784-E1991

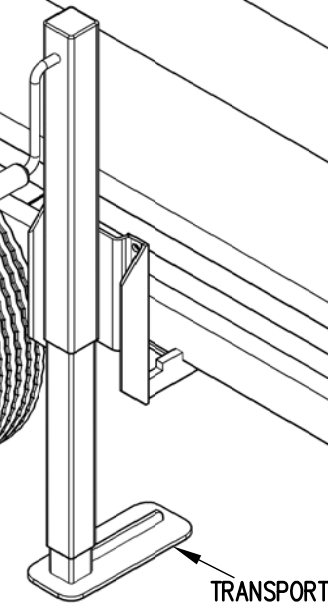
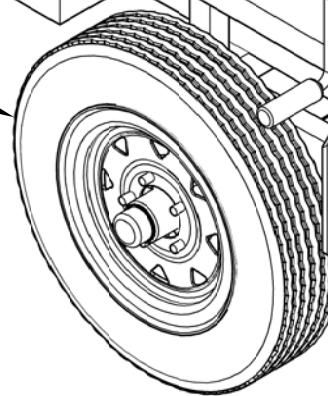
WHEEL AND AXLE ASSEMBLY



TRANSPORT JACK

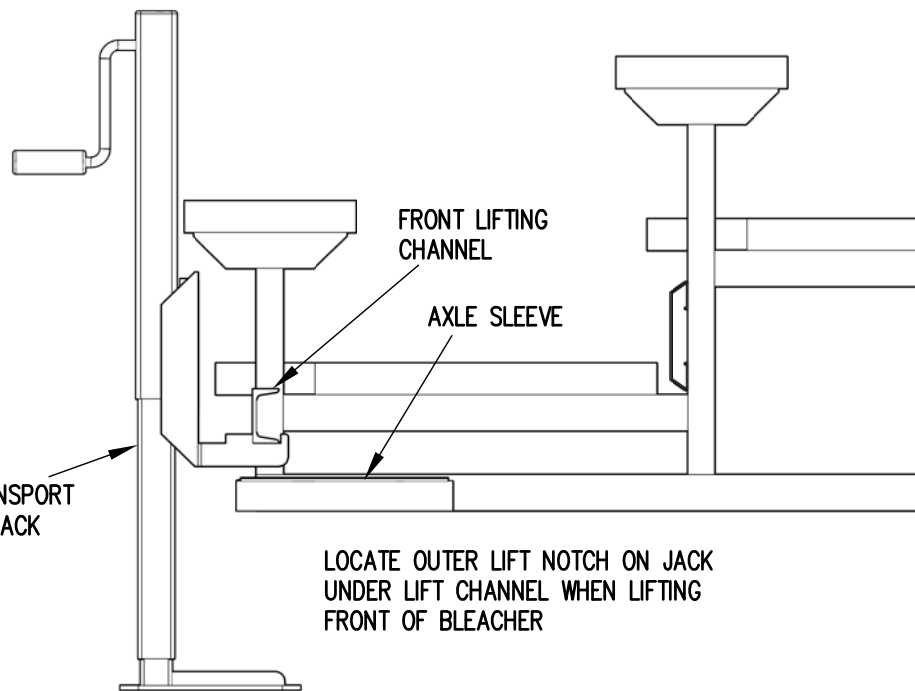
FRONT LIFTING CHANNEL

WHEEL AND AXLE ASSEMBLY

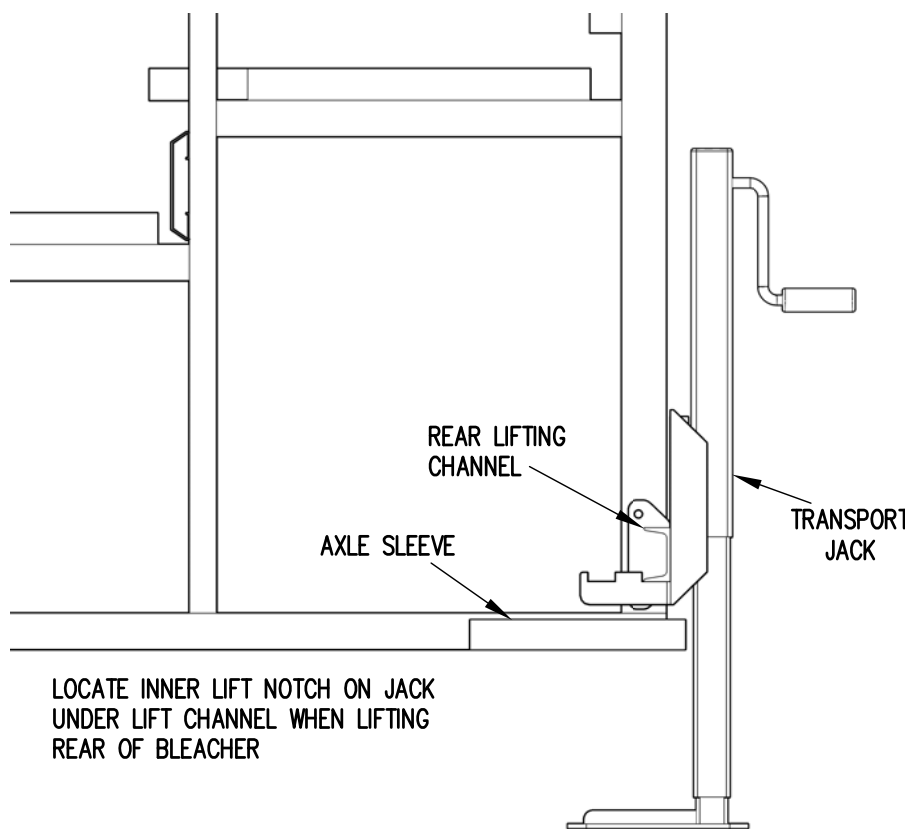


TRANSPORT JACK

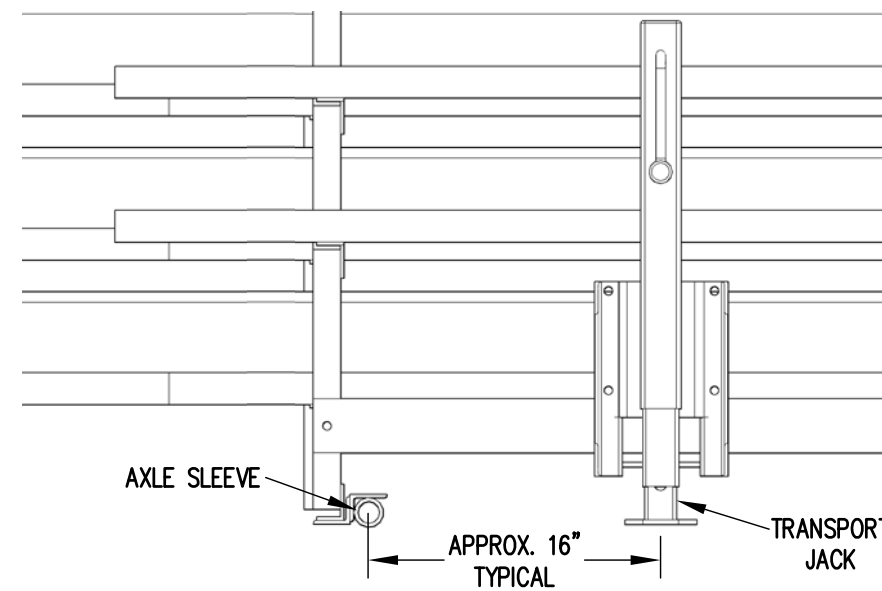
FRONT LIFTING CHANNEL



LOCATE OUTER LIFT NOTCH ON JACK UNDER LIFT CHANNEL WHEN LIFTING FRONT OF BLEACHER



LOCATE INNER LIFT NOTCH ON JACK UNDER LIFT CHANNEL WHEN LIFTING REAR OF BLEACHER



Outdoor Aluminum

P.O. BOX 118  
GENEVA, ALABAMA 36340  
334-684-2296

SCALE	N.T.S.	REVISIONS	BY	DATE
DATE	10/16/14			
DR'N	ADK	CKD		
AP'VD	ADK			
TITLE	1-5 AND 6-10 ROW TRANSPORT JACK PLACEMENT			NO. <b>784-E1992</b>